



Sky Capital
— New Capital —

 15136

01227000507



4 Salah Eldien st. From Salah Salem Road
Second Floor - Flat 205



Sky Capital
— New Capital —





We aim to offer our clients the best home services and outstanding level through the selection of the best locations and the best engineering designs and precision in execution to achieve our goal which is the best home.

Better House
company for real estate development

Working in real estate development to form models for distinct housing units and sophisticated for the development of the field of real estate in Egypt our beloved country and our biggest focus in the new cities in order to make a better future away from the crowding and noise.



Sky Capital

Is the latest Better House project residential apartments, duplex ,villas.
another level of luxury

The project includes many services and facilities designed in a modern way to provide a better life.

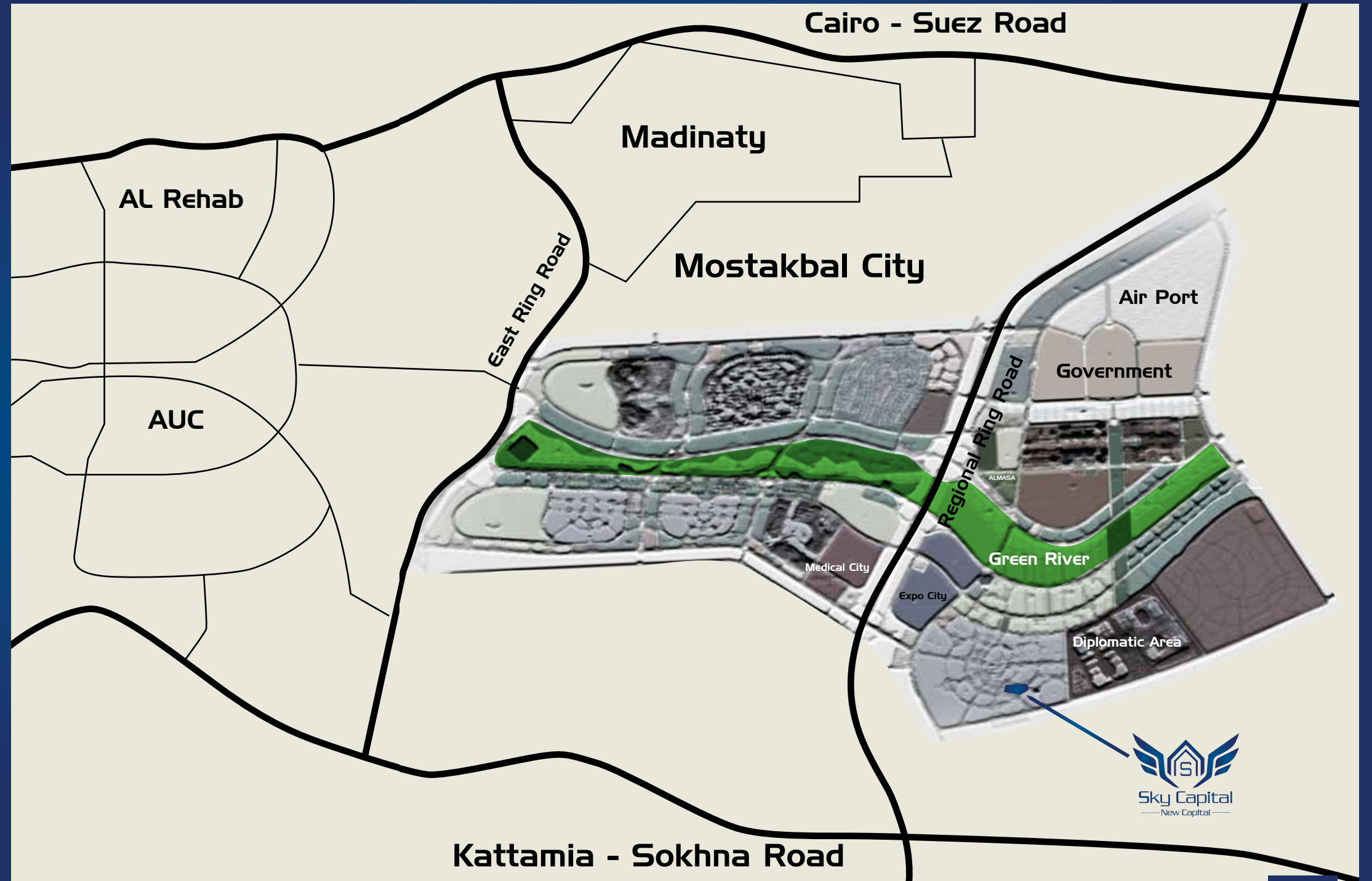
The compound is located in the best locations of the new administrative Capital (R7) next to the al Masa hotel and the government district

district of the embassies and the mosque of Al-Fattah Al-Aleem and cathedral and the logic of business and the Green River.





☎ 15136





Sky Capital
— New Capital —

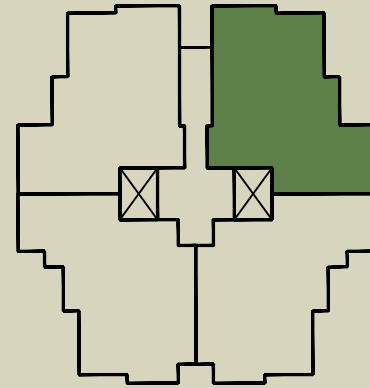




Garden - TYPE C



155 M²



Dimensions	
1- Reception	7.4x3.7 m
2- Bedroom	3.75x3.75 m
3- Bedroom	3.75x3.72 m
4- Master Bedroom	4.5x4 m
5- Kitchen	3.25x2.6 m
6- Bathroom	2.78x2.5 m
7- Toilet	1.9x1.5 m
8- Terrace	3.8x1.4 m
9- Garden	50 m ²

155 M²

15136

15136

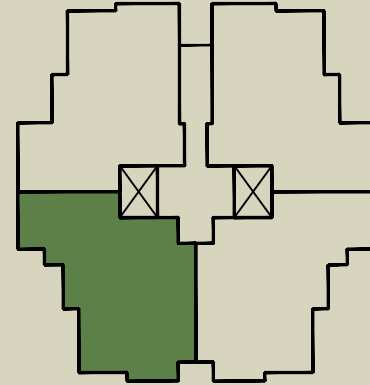


Sky Capital
New Capital

عيش الحلم



Garden - TYPE B



Dimensions	
1- Reception	7.25x4.25 m
2- Bedroom	3.75x3.6 m
3- Bedroom	3.75x3.7 m
4- Master Bedroom	4x4 m
5- Kitchen	3.25x3.67 m
6- Bathroom	2.6x2.5 m
7- Toilet	1.98x1.38 m
8- Bathroom	2.6x2.5 m
9- Terrace	3.71x1.6 m
10- Garden	3.71x1.4 m

165 M²

15136

165 M²



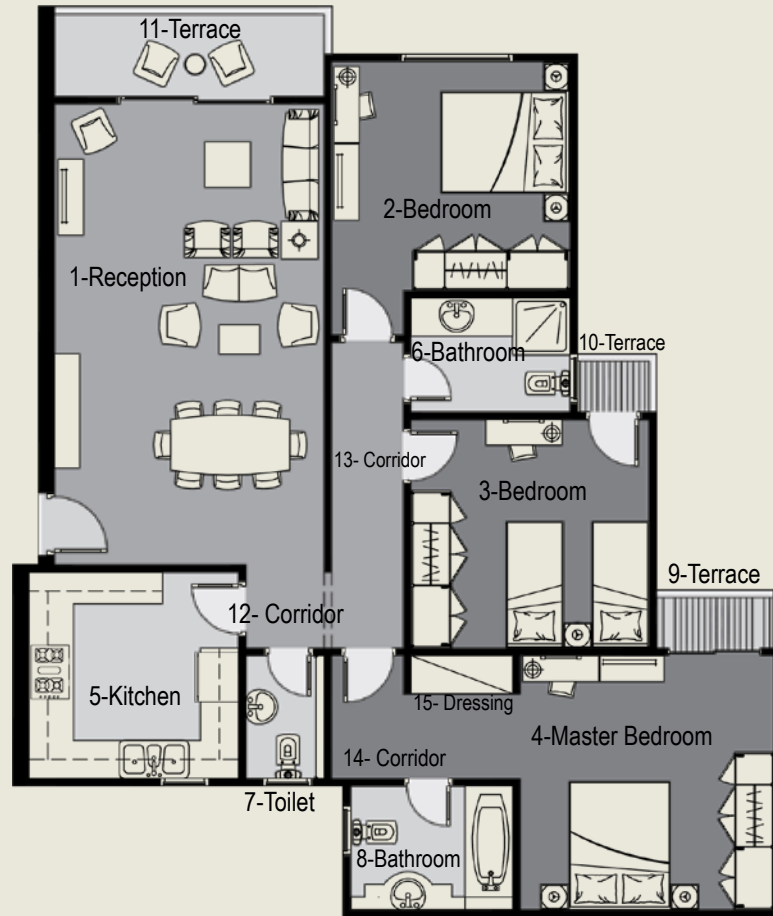
15136



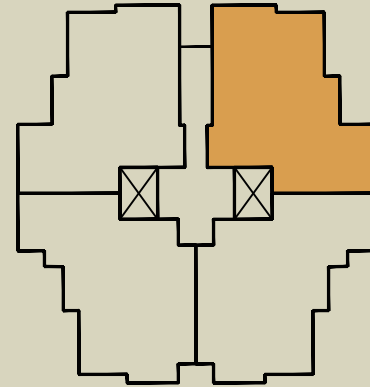
Sky Capital
New Capital

طبيعة الحياة

TYPICAL - TYPE C



170 M²



Dimensions	
1- Reception	7.3x4.5 m
2- Bedroom	3.75x3.72 m
3- Bedroom	3.75x3.72 m
4- Master Bedroom	4.1x4.12 m
5- Kitchen	3.6x3.4 m
6- Bathroom	2.5x1.95 m
7- Toilet	1.35x2 m
8- Bathroom	2.5x2.1 m
9- Terrace	1.32x0.95 m
10- Terrace	0.95x0.95 m
11-Terrace	3.25x1.35 m
12- Corridor	1.45x1.35 m
13- Corridor	1.13x5.2 m
14- Corridor	3.1x2.1 m
15- Dressing	1.6x0.75 m

170 M²

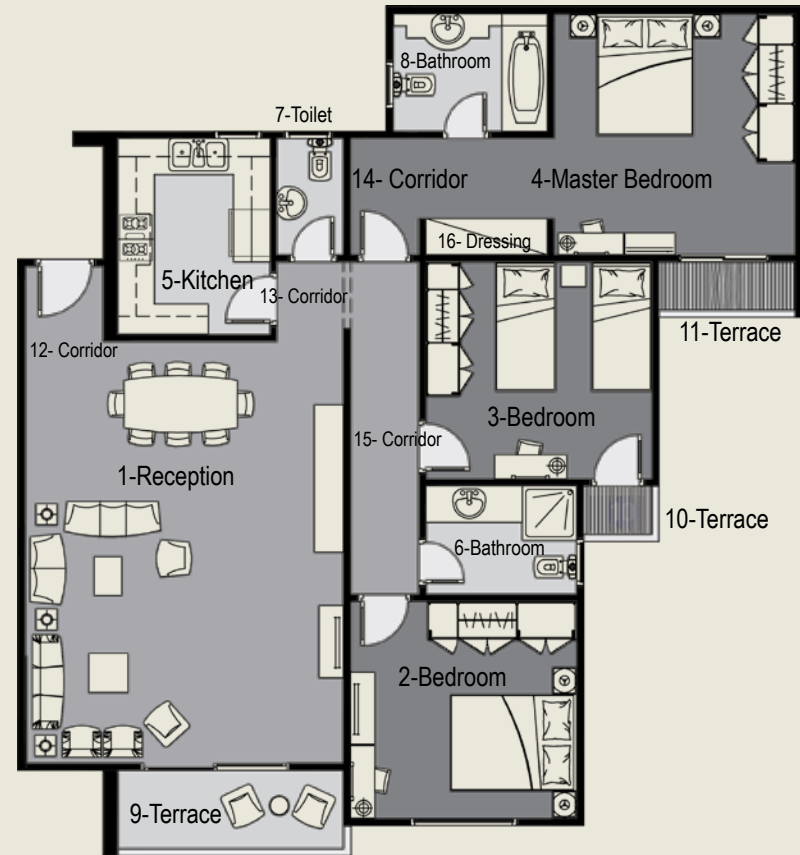


Sky Capital
— New Capital —

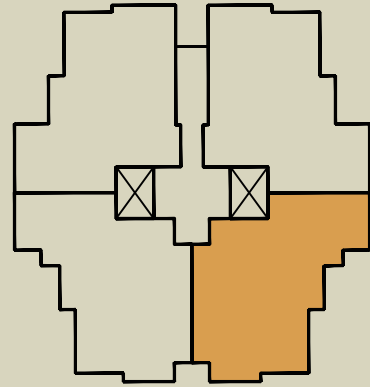
عيش الحلم



TYPICAL - TYPE C



180 M²



Dimensions	
1- Reception	7.25x5.5 m
2- Bedroom	3.85x3.85 m
3- Bedroom	3.85x3.88 m
4- Master Bedroom	4.1x4.13 m
5- Kitchen	3.5x2.8 m
6- Bathroom	2.6x2.05 m
7- Toilet	1.35x2.15 m
8- Bathroom	2.6x2.20 m
9- Terrace	3.1x1.5 m
10- Terrace	1.00x1.25 m
11-Terrace	1.45x1 m
12- Corridor	1.40x1.25 m
13- Corridor	1.45x1.2 m
14- Corridor	2.15x3.5 m
15- Corridor	5.75x1.25 m
16- Dressing	2.15x0.75 m

180 M²



☎ 15136

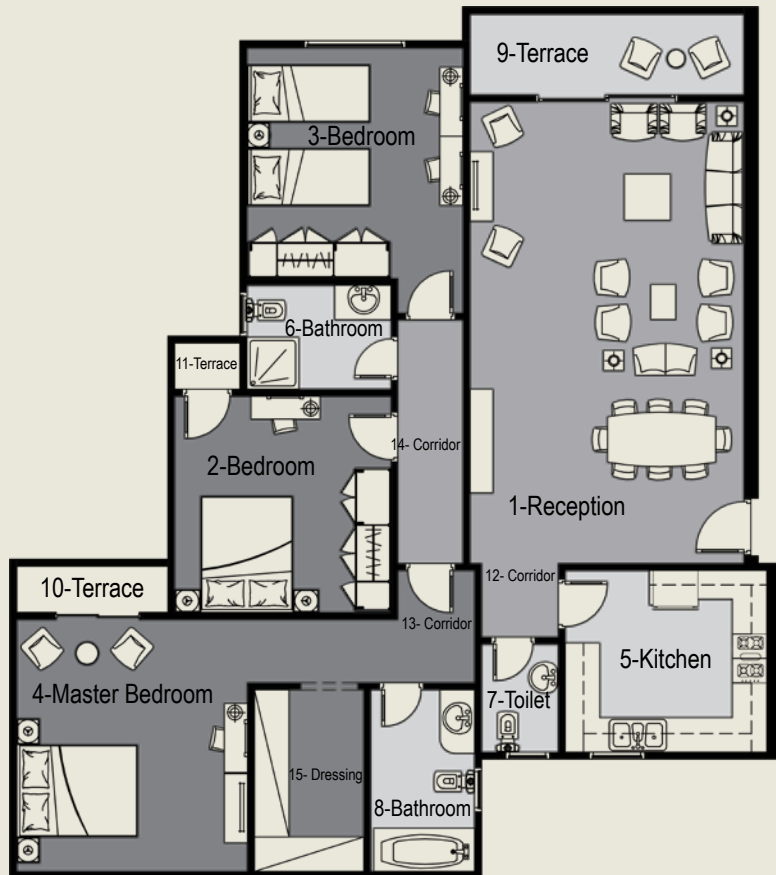


Sky Capital

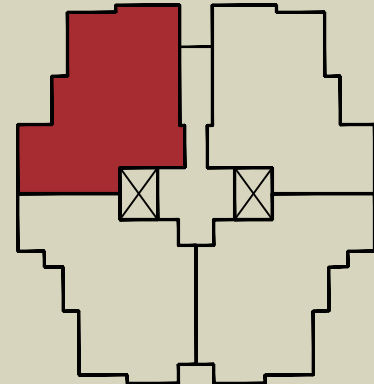
New Capital

فرحة العائلة

TYPICAL - TYPE B



200 M²



Dimensions	
1- Reception	7.95x4.95 m
2- Bedroom	4x3.90 m
3- Bedroom	4.1x3.9 m
4- Master Bedroom	4.35x4.1 m
5- Kitchen	3.8x3.15 m
6- Bathroom	2.65x1.95 m
7- Toilet	1.9x1.35 m
8- Bathroom	3.25x2 m
9- Terrace	3.45x1.45 m
10- Terrace	1.45x0.95 m
11- Terrace	1.05x0.95 m
12- Corridor	1.4x1.35 m
13- Corridor	4.25x1.3 m
14- Corridor	1.25x5.1 m
15- Dressing	2x3.25 m

200 M²

1536

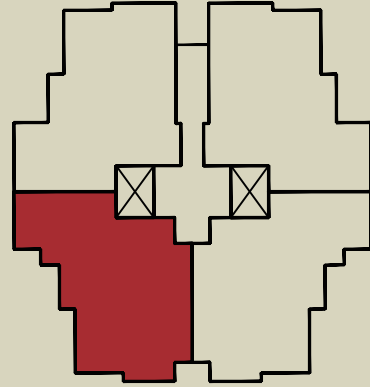
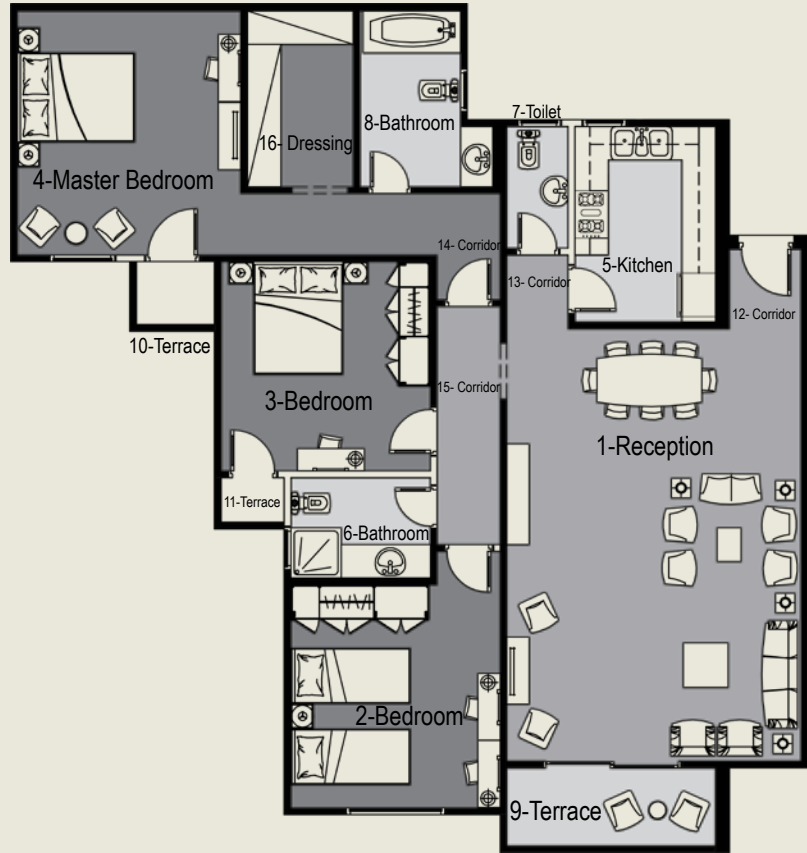


Sky Capital

New Capital

عيش السعادة

TYPICAL - TYPE B



Dimensions	
1- Reception	8.05x5.4 m
2- Bedroom	4x4 m
3- Bedroom	3.9x4 m
4- Master Bedroom	4.1x4.35 m
5- Kitchen	3.45x2.8 m
6- Bathroom	2.65x1.95 m
7- Toilet	2.2x1.65 m
8- Bathroom	2.05x3.15 m
9- Terrace	3.45x1.45 m
10- Terrace	1.45x0.95 m
11-Terrace	1.25x1 m
12- Corridor	1.45x1.45 m
13- Corridor	1.35x1.25 m
14- Corridor	1.25x4.8 m
15- Corridor	5.8x1.25 m
16- Dressing	3.15x2 m

205 M²

205 M²

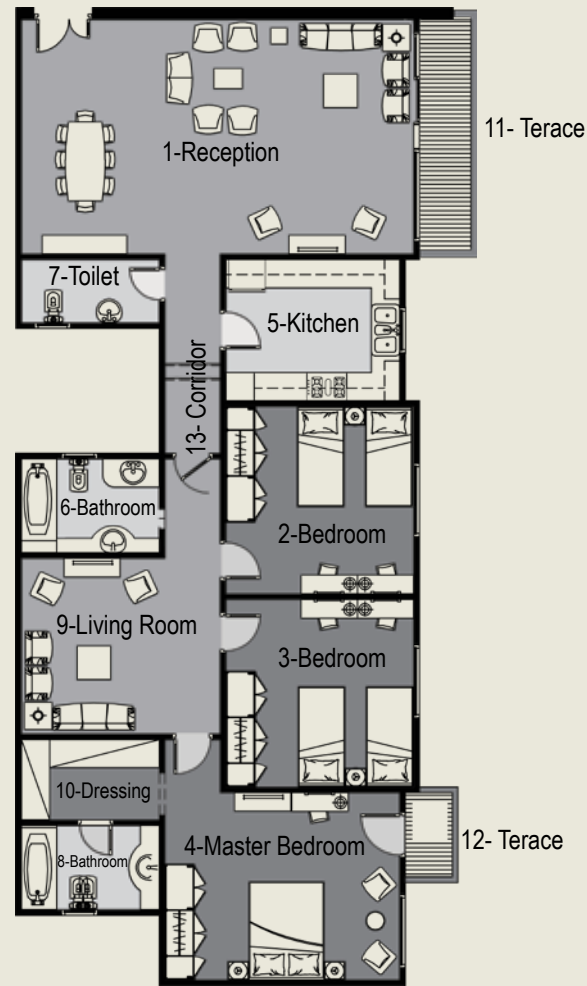


Sky Capital

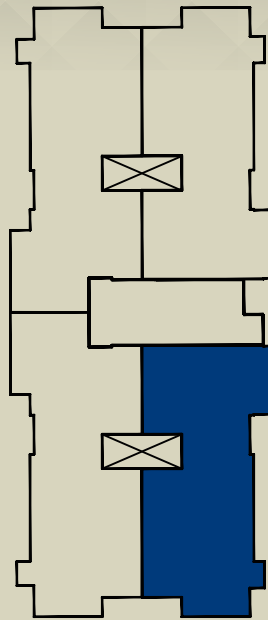
New Capital

جمال الطبيعة

TYPICAL - TYPE A

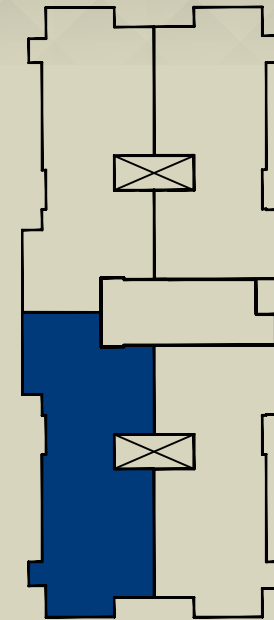


235 M²



Dimensions	
1- Reception	8.6x5.25 m
2- Bedroom	4.15x4.15 m
3- Bedroom	4.15x4.15 m
4- Master Bedroom	5.15x4.15 m
5- Kitchen	3.85x3 m
6- Bathroom	3.05x2.15 m
7- Toilet	3.05x1.5 m
8- Master Bathroom	3.05x1.95 m
9- Living Room	3.9x4.35 m
10- Dressing	3.05x2 m
11- Terrace	5.25x1.25 m
12- Terrace	1.95x1.15 m
13- Corridor	7.75x1.3 m

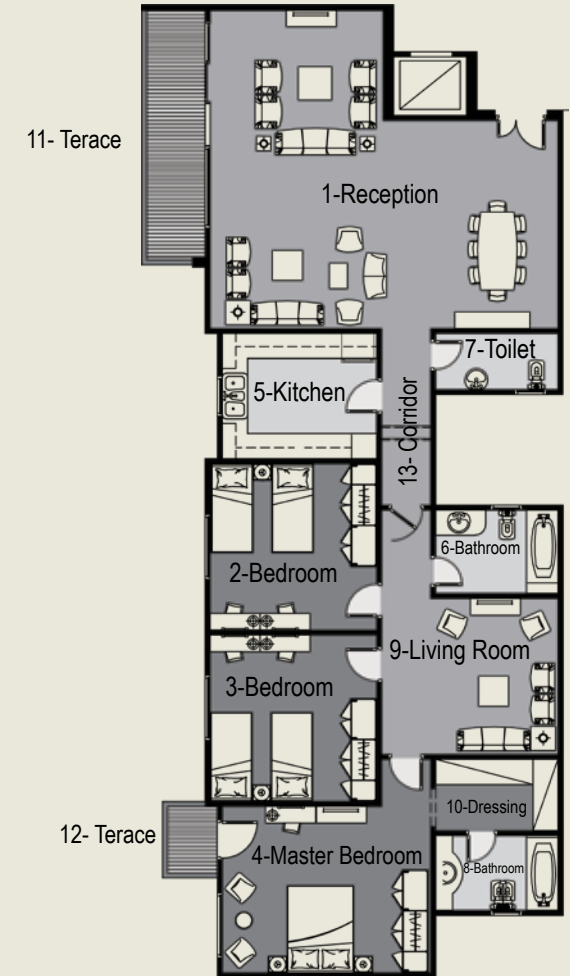
235 M²



Dimensions	
1- Reception	7.9x8.5 m
2- Bedroom	4.15x4.15 m
3- Bedroom	4.15x4.15 m
4- Master Bedroom	5.15x4.15 m
5- Kitchen	3.2x3.85 m
6- Bathroom	2.15x3.05 m
7- Toilet	3.05x1.5 m
8- Master Bathroom	3.05x1.95 m
9- Living Room	4.35x3.9 m
10- Dressing	3.05x1.85 m
11- Terrace	6.15x1.5 m
12- Terrace	1.75x1.35 m
13- Corridor	7.75x1.3 m

245 M²

TYPICAL - TYPE A



245 M²

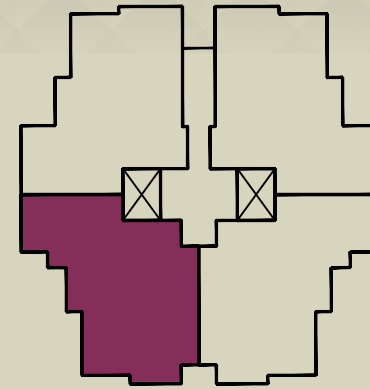


Sky Capital
— New Capital —

فرحة العائلة



DUPLEX - TYPE C

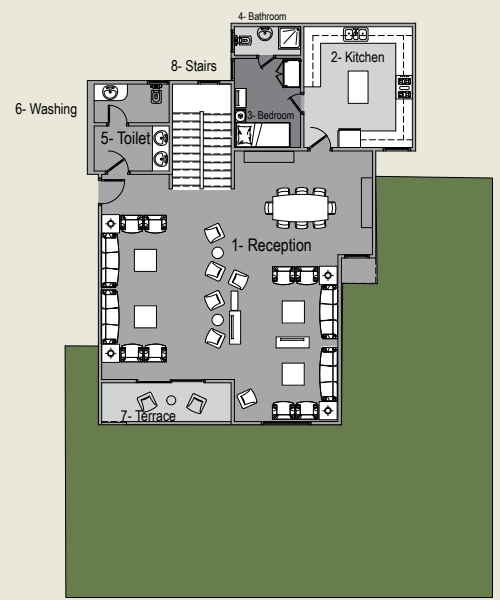
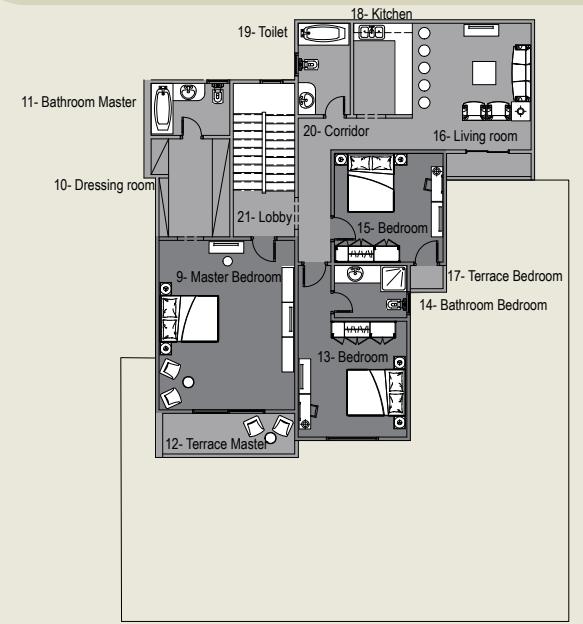


Dimensions	
1- Reception	8.6x7.9 m
2- Kitchen	4.1x4.1 m
3- Bedroom	3.4x2.7 m
4- Bathroom	1.45x2.5 m
5- Toilet	2.2x2.05 m
6- Washing	1.4x2.05 m
7- Terrace	1.6x4.6 m
8- Stairs	2.25x3.6 m
9- Master Bedroom	4.25x4.8 m
10- Dressing room	3.7x2.2 m
11- Bathroom Master	2.25x3.15 m
12- Terrace Master	3.25x1.4 m
13- Master room lobby	2.7x2.05 m
14- Bathroom	2.3x2.6 m
15- Bedroom	5.45x4.85 m
16- Living room	5x3.75 m
17- Terrace Living	1.25x0.95 m
18- Kitchen	2x2.5 m
19- Bedroom	5x3.75 m

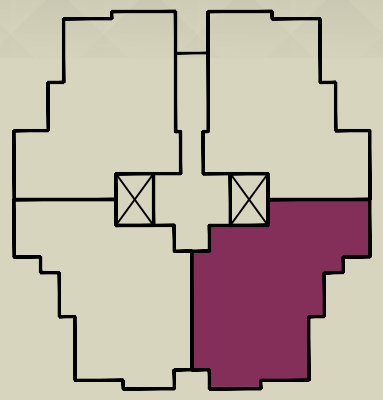
335 M²

335 M²

DUPLEX - TYPE B



380 M²



Dimensions	
1- Reception	9.8x8.5 m
2- Kitchen	4x4.35 m
3- Bedroom	3.2x3.25 m
4- Bathroom	1.3x2.5 m
5- Toilet	2.1x2.3m
6- Washing	1.75x2.3 m
7- Terrace	1.4x3.6 m
8- Stairs	3.8x2.85 m
9- Master Bedroom	5.6x4.85 m
10- Dressing room	3.3x4.25 m
11- Bathroom Master	3.3x2.1 m
12- Terrace Master	1.4x3.45 m
13- Bedroom	3.9x3.75 m
14- Bathroom Bedroom	2.7x2 m
15- Bedroom	4.2x4 m
16- Living room	4.3x4 m
17- Terrace Bedroom	1.4x0.95 m
18- Kitchen	2.15x3.2 m
19- Toilet	3.2x2 m
20- Corridor	1.25x4.8 m
21- Lobby	1.65x3.4 m

380 M²

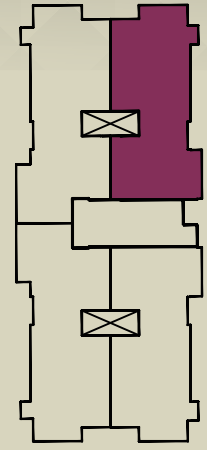
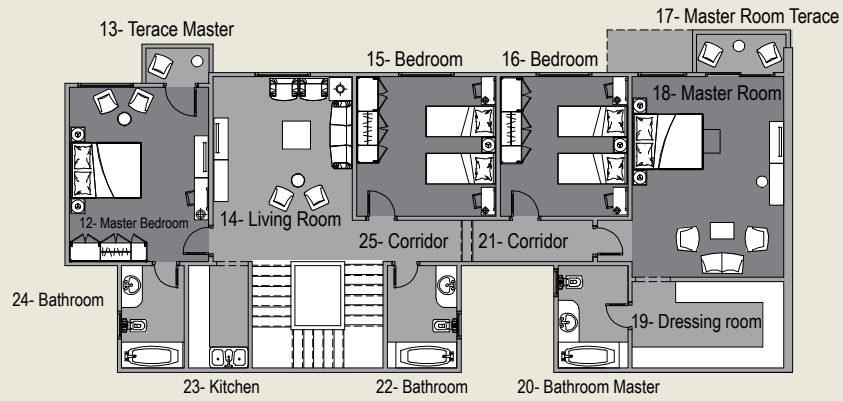
15136



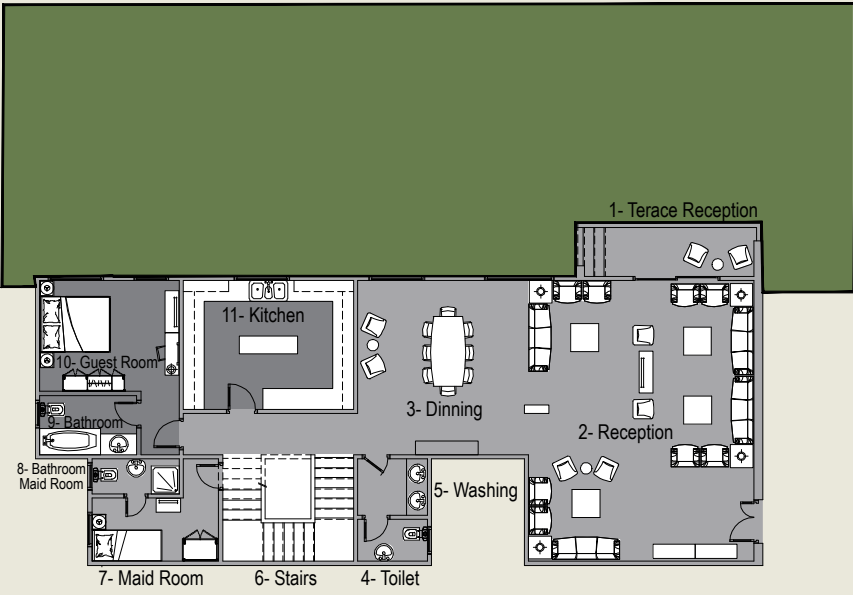
Sky Capital
New Capital

متعة الرفاهية

DUPLEX - TYPE A



Dimensions	
1- Terrace Reception	1.5x5.15 m
2- Reception	8.3x6.75 m
3- Dinning	5.25x5.15 m
4- Toilet	2.15x1.35 m
5- Washing	2.15x1.75 m
6- Stairs	4x3.30 m
7- Maid Room	2.25x3.75 m
8- Bathroom Maid Room	2.6x1.15 m
9- Bathroom	1.85x2.9 m
10- Guest Room	3.3x4.1 m
11- Kitchen	5x3.9 m
12- Master Bedroom	4.15x5.15 m
13- Terrace Master	1.95x1.2 m
14- Living Room	5.5x4.15 m
15- Bedroom	4.15x4.15 m
16- Bedroom	3.8x3.9 m
17- Master Room Terrace	2.65x1.45 m
18- Master Room	5.65x4.5 m
19- Dressing room	4.5x2.55 m
20- Bathroom Master	2.15x3.05 m
21- Corridor	8x1.3 m
22- Bathroom	3.1x2.15 m
23- Kitchen	3.1x1.85 m
24- Bathroom	1.95x3.1 m
25- Corridor	6.15x1.3 m



450 M²

450 M²

15136

15136



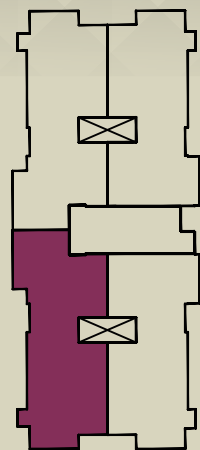
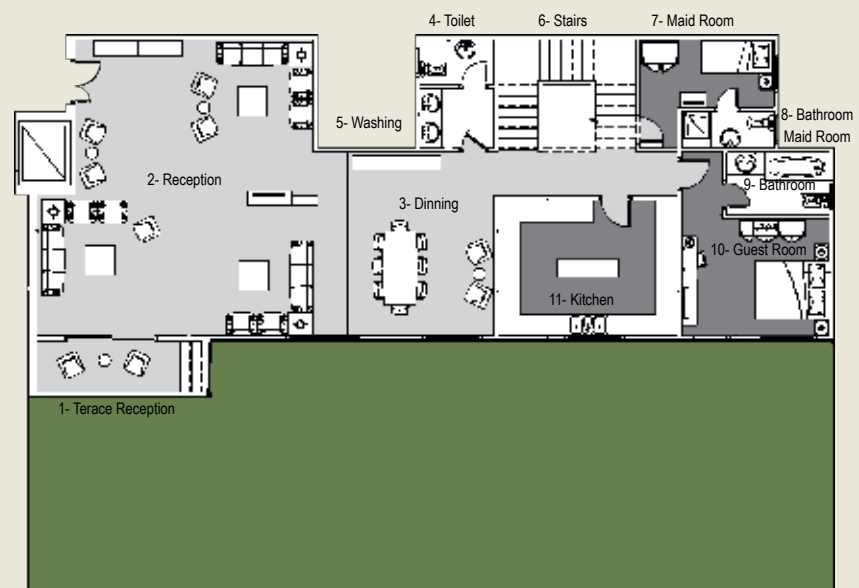
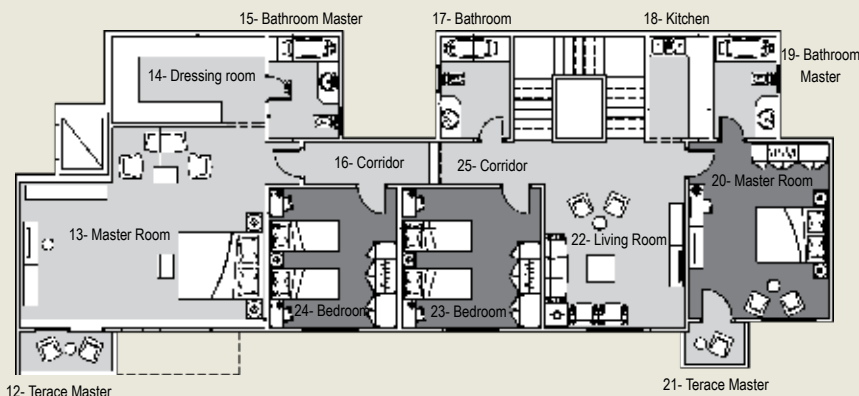
Sky Capital

New Capital

عيش الحلم



DUPLEX - TYPE A



Dimensions	
1- Terrace Reception	4.7x1.25 m
2- Reception	8.6x6.75 m
3- Dinning	5.15x5.1 m
4- Toilet	2.15x1.35 m
5- Washing	2.15x1.75 m
6- Stairs	4x3.10 m
7- Maid Room	2x3.8 m
8- Bathroom Maid Room	2.65x1.15 m
9- Bathroom	1.85x2.9 m
10- Guest Room	3.3x4.15 m
11- Kitchen	5x3.85 m
12- Terrace Master	2.8x1.25 m
13- Master Room	7.15x5.8 m
14- Dressing room	4.5x2.75 m
15- Bathroom Master	3x2.15 m
16- Corridor	8x1.3 m
17- Bathroom	2.15x3.1 m
18- Kitchen	1.85x3.05 m
19- Bathroom Master	3.05x1.95 m
20- Master Room	5.15x4.15 m
21- Terrace Master	1.9x1.35 m
22- Living Room	5.45x4.15 m
23- Bedroom	4.15x4.15 m
24- Bedroom	3.8x4.15 m
25- Corridor	6.25x1.3 m

455 M²

455 M²

15136



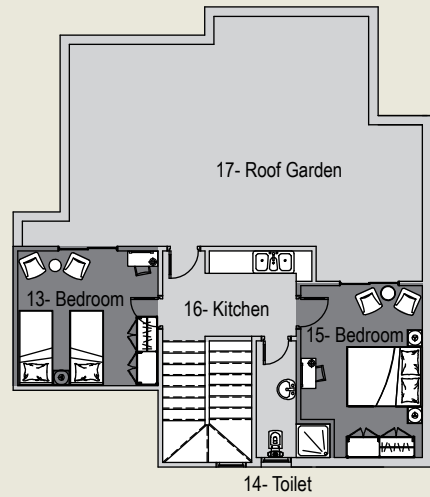
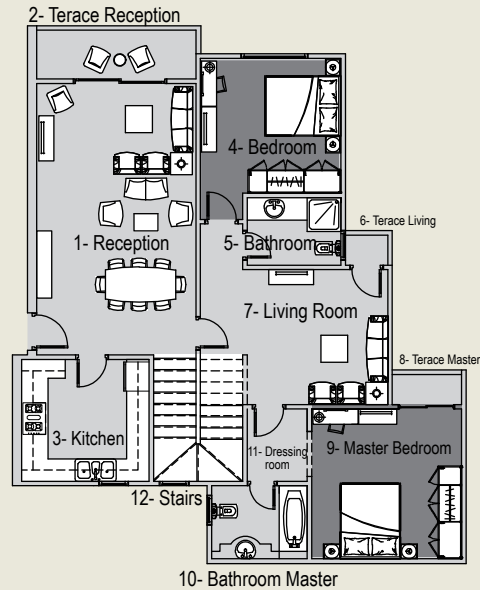
15136



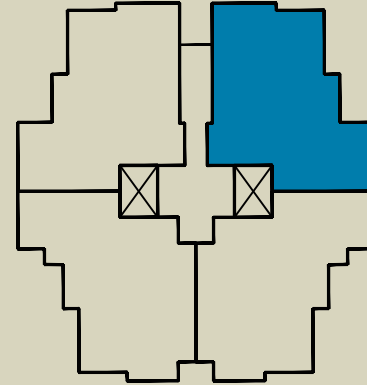
Sky Capital
New Capital

عيش السعادة

BENT HOUSE C

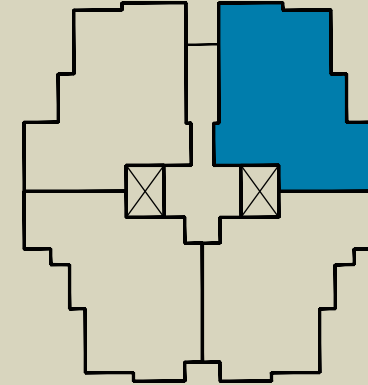


245 M²



Dimensions	
1- Reception	7.25x4.5 m
2- Terrace Reception	1.35x3.25 m
3- Kitchen	3.4x3.6 m
4- Bedroom	3.75x3.75 m
5- Bathroom	2.5x2 m
6- Terrace Living	0.95x1.25 m
7- Living Room	5x3.75 m
8- Terrace Master	1.35x0.95 m
9- Master Bedroom	4.25x4 m
10- Bathroom Master	2.5x2 m
11- Dressing room	2.05x1.75 m
12- Stairs	3.5x3.5 m
13- Bedroom	3.75x3.45 m
14- Toilet	2.35x2.1 m
15- Bedroom	5.1x3.5 m
16- Kitchen	3.7x2.4 m
17- Roof Garden	62 m ²

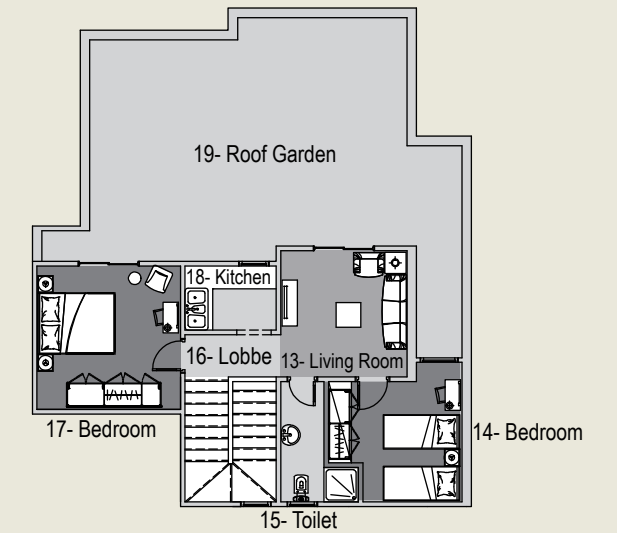
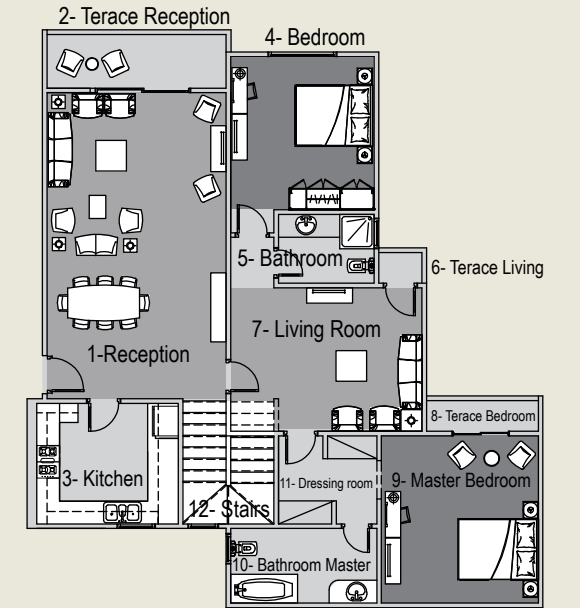
245 M²



Dimensions	
1- Reception	7.8x4.8 m
2- Terrace Reception	1.4x3.45 m
3- Kitchen	4x3.4 m
4- Bedroom	4x4 m
5- Bathroom	2.65x1.95 m
6- Terrace Living	1.05x1.25 m
7- Living Room	5.1x3.9 m
8- Terrace Bedroom	1.4x0.95 m
9- Master Bedroom	4.1x4.4 m
10- Bathroom Master	2.1x4 m
11- Dressing room	2.7x2.3 m
12- Stairs	3.4x2.6 m
13- Living Room	3.5x3 m
14- Bedroom	3.6x3.3 m
15- Toilet	1.25x2.15 m
16- Lobbe	1.25x2.5 m
17- Bedroom	4x4.1 m
18- Kitchen	1.8x2.5 m
19- Roof Garden	64 m ²

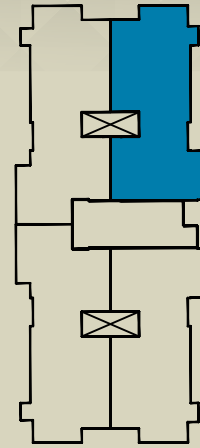
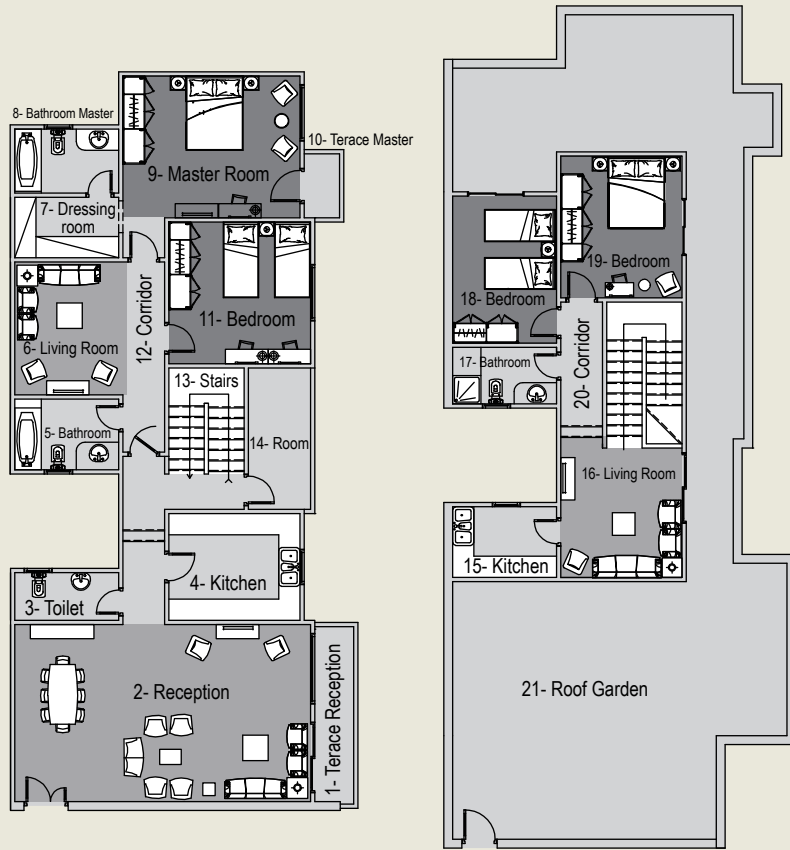
282 M²

BENT HOUSE B



282 M²

BENT HOUSE A



Dimensions	
1- Terrace Reception	2.25x1.25 m
2- Reception	5.25x8.6 m
3- Toilet	1.5x3.05 m
4- Kitchen	3.15x3.85 m
5- Bathroom	2.15x3.1 m
6- Living Room	4.4x3.9 m
7- Dressing room	1.85x3.1 m
8- Bathroom Master	3.1x1.95 m
9- Master Room	5.15x4.15 m
10- Terrace Master	1.95x1.15 m
11- Bedroom	4.15x4.15 m
12- Corridor	11.5x1.4 m
13- Stairs	2.25x4 m
14- Room	1.9x4 m
15- Kitchen	2.15x3.1 m
16- Living Room	3.8x3.6 m
17- Bathroom	1.75x3.1 m
18- Bedroom	3.1x4.4 m
19- Bedroom	3.6x4.15 m
20- Corridor	1.3x4.15 m
21- Roof Garden	125 m ²

330 M²

330 M²
15136



Sky Capital

New Capital

مستقبل أفضل

FACILITIES



**Green Areas
& Community Garden**



**Kids Club
& Kids Area**



**Building
Access Card**



**Event
Lounge**



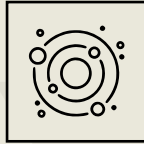
**Swimming
Pools**



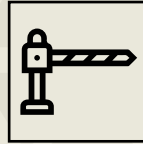
**Club
House**



**Golf
Cart**



**Solar
System**



**Residential
parking**



**Security
System**



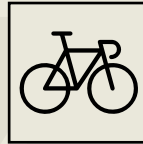
**Baby
Sitting Center**



**Central
Satellite & Wifi**



**Hyper
Market**



**Bicycle
Road**



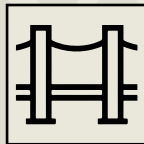
**House
Keeping**



**Business
Center**



**Premium
Mall**



Boulevard



**Beauty
Centers**



**Branded
Restaurants & Cafes**



**Food
Court**



**Healthy
Club & Spa**



**Medical
Center**



Pharmacy 24/7



Atms