

ريفايت
RIVAN
— NEW CAPITAL —

Marzouk Mansour CEO



At Altameer Arabian we are establishing a bridge of precious reliability utilizing our long experience in Construction and Real Estate development in addition to our coalition with local and international consultancy firms.

During our experience in Saudi Arabia and United Arab Emirates, we had a new vision of creating an archetype shift in the real estate development in Egypt .We decided to sum up our long experience in this field by developing one of the most elegant compounds, "Rivan" which reflects the highest standards of luxury and beauty.

In Rivan ... we applied the latest technology and creativity in buildings and modern designs. In Rivan ... You will have the luxury of an elite community and prime location in the New Capital

We believe that the mission of real estate development is to create daily happiness through improving the quality of lifestyle and luxury, not just building residential or commercial units.

We always aim to gain your trust and satisfaction and to develop a new lifestyle for you and your family in the New Capital as one of the fourth - generation cities that is designed to formulate the bright future of the coming generations.

اننا في " التعمير العربية"، نبني جسراً من الثقة الغالية، استناداً إلى خبرتنا الكبيرة في مجالات البناء والتطوير العقاري، بالإضافة إلى تحالفنا مع شركات الاستشارات المحلية والدولية.

من خلال تجربتنا في المملكة العربية السعودية والإمارات العربية المتحدة، أطلقنا رؤيتنا الجديدة المتمثلة في إحداث نقلة نوعية في مجال التطوير العقاري في مصر وقررنا نقل تجربتنا الطويلة في هذا المجال لتطوير أحد أرقى المجتمعات العمرانية " ريفان " الذي يجسد أعلى معايير الرفاهية والجمال.

في ريفان ... أحدث التقنيات والإبداع في المباني والتصاميم الحديثة. في ريفان ... سيكون لديك مجتمع الرفاهية والعنوان الراقى وموقع متميز جدا في العاصمة الإدارية

اننا نؤمن أن صناعة التطوير العقاري ليس الهدف منها مجرد بناء وحدات سكنية أو تجارية فقط وانما هي إيجاد طريقة لتحقيق الرفاهية والسعادة اليومية من خلال تطبيق أحدث أساليب التصميمات والابتكارات.

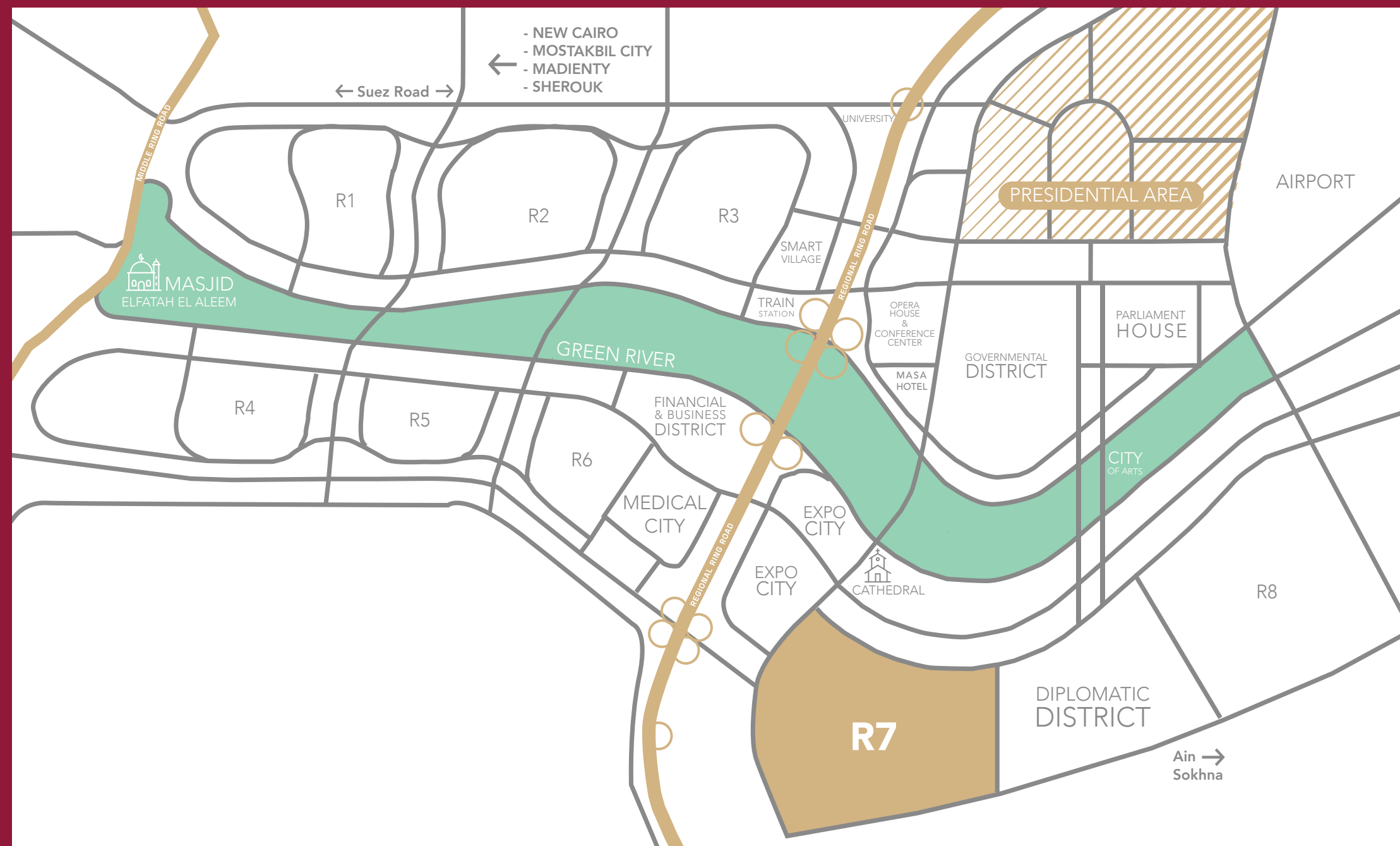
أملين في ذلك علي كسب ثقتكم و رضاكم وابتكار أسلوب جديد لحياة لائقة لك ولأسرتك في العاصمة الإدارية الجديدة باعتبارها واحدة من مدن الجيل الرابع، الطريق الي مستقبل الأجيال القادمة.



About NEW CAPITAL

The new capital is developed with the strategic vision for a smart city integrating its (state of art infrastructure) to provide innovative services to the citizens.

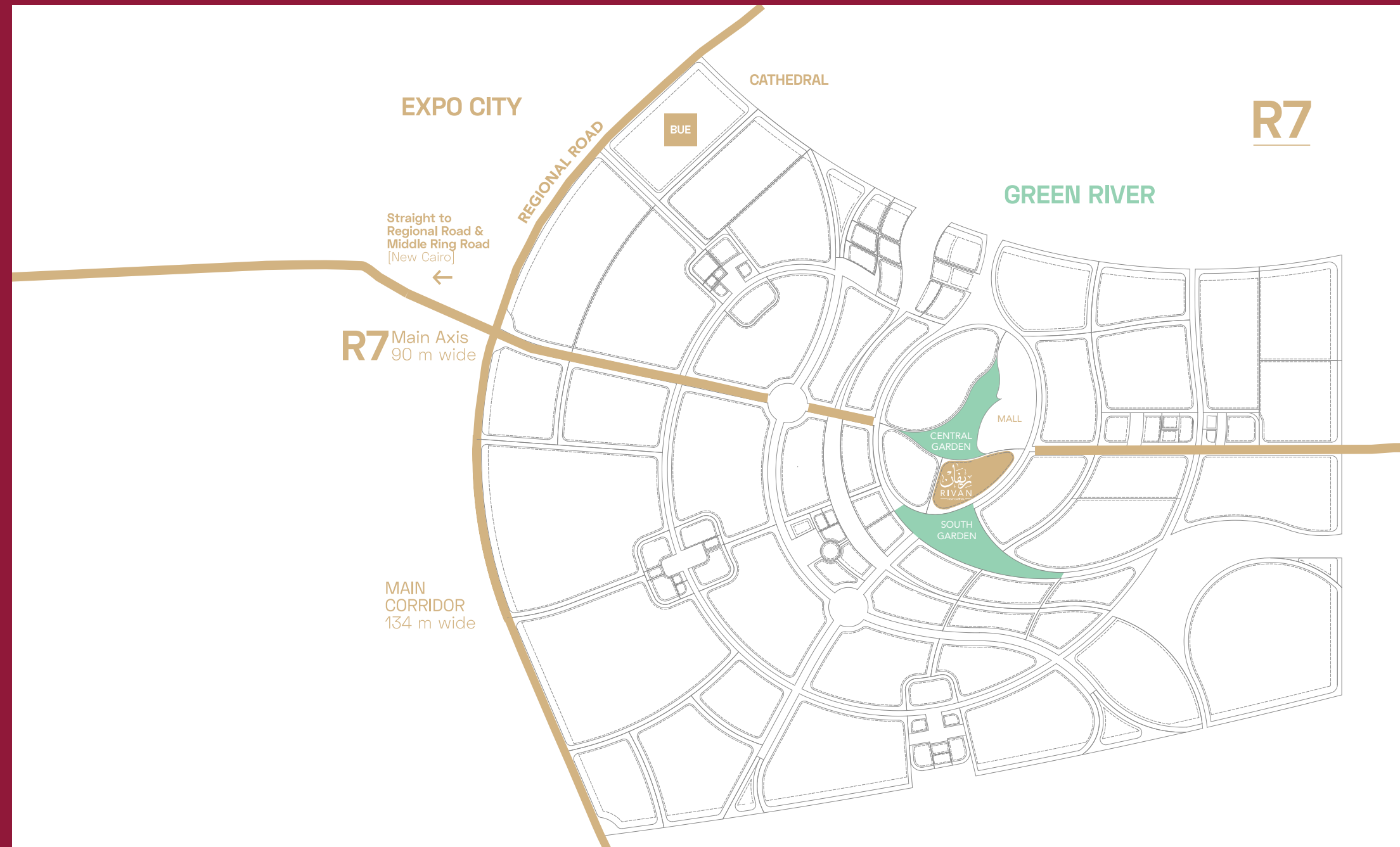
The Egyptian government decided to establish the new capital in order to solve the congestion crisis in Cairo, moreover, to reallocate the quality of life style to a new horizon.



About Rivan

Located in R7, the most distinguished location in the new capital, servicing the diplomatic district.

R7 is considered to be the golden district in the new capital, as it's nearby the diplomatic area and the major sites in the new capital.



MASTER PLAN

Rivan is built over an elevated land to provide a fantastic open view for most units.

AMENITIES



SHOPPING MALL



CLUB HOUSE



WATER FEATURES



FINE DINING



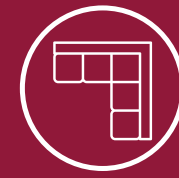
BICYCLES LANE



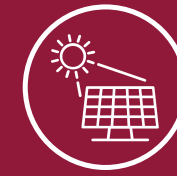
RUNNING TRACK



SWIMMING POOL



EVENT LOUNGE



SOLAR ENERGY



KIDS AREA



PARKS & GREEN AREAS (76%)



HEALTH CLUB AND SPA



UNDERGROUND PARKING



HOUSE KEEPING



SECURITY 24/7



BEAUTY CENTER



CONCIERGE



CENTRAL AC



ROOFTOP LOUNGE



Live healthy and delighted with no boundaries.
Roof top swimming pools, GYM's and lounges with a magnificent view.
Rivan New Capital is your sanction of indulgence and pinnacle of privilege.

LINKED VILLAS



Welcome to the ultimate life of exclusivity.
The Linked Villas with outdoor pools are simply the most opulent living spaces in Rivan New Capital

BICYCLE LANE



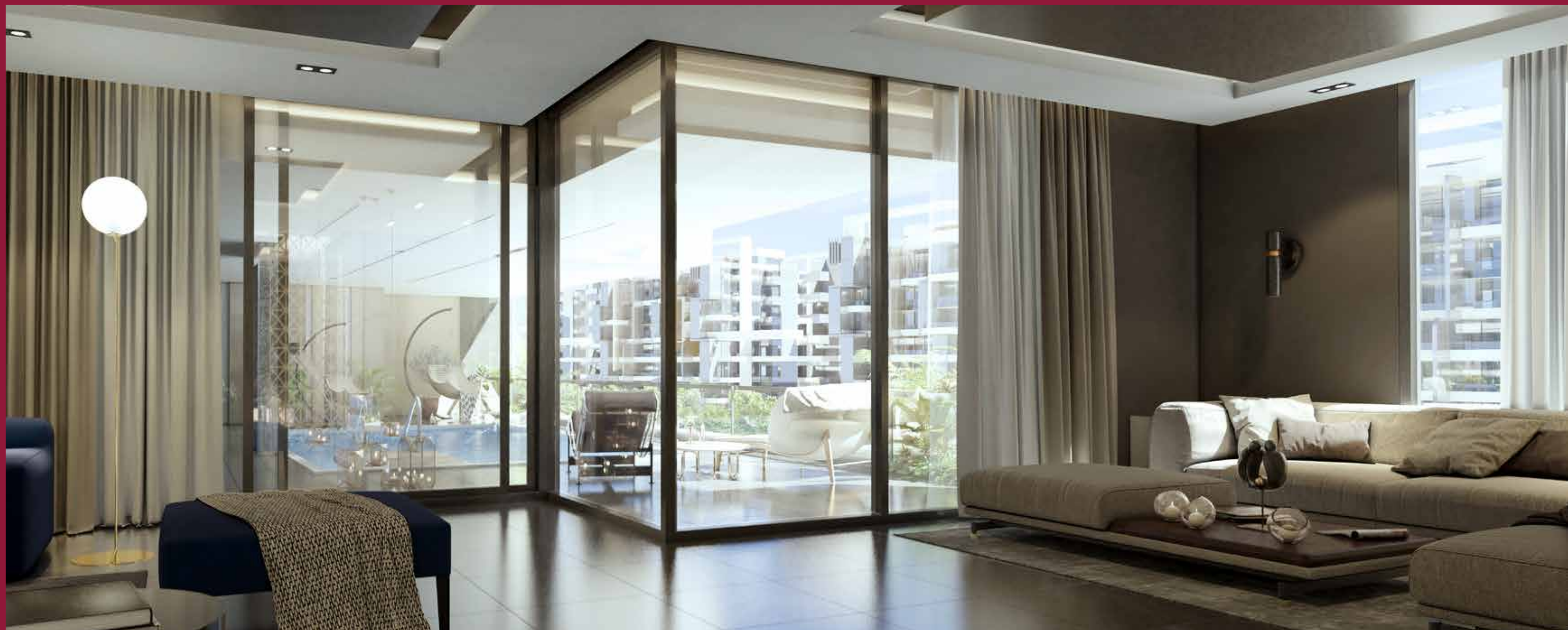
Creativity is powered by safe sports
In Rivan new capital, a safe bike ride on the bicycle lane relieves your mind
and nourishes your senses.

CENTRAL PARK



Timeless moments of serenity.
Seize a moment to endorse your eyes with the beauty of a breathtaking
view, overlooking the central park of Rivan.

PREMIUM FINISHING



Luxury is refined by innovation.
Enjoy the luxurious finishing and advanced utilities of WiFi, Solar Powered Systems and Central Air conditioning to refine your convenient life in Rivan New Capital.

APARTMENTS



GROUND FLOOR

BUILDINGS(1,2,3,4,6,7,8)

E.LOBBY	(4.10X3.10)
RECEPTION	(6.65X6.00)
LIVING	(5.15X4.25)
LOBBY	(1.80X1.20)
TOILET	(2.10X1.20)
KITCHEN	(3.90X2.80)
LOBBY	(2.30X1.35)
BATHROOM	(2.55X1.90)
M.BEDROOM	(4.10X4.00)
BEDROOM	(4.40X3.70)
BATHROOM	(3.60X2.10)
BEDROOM	(4.10X3.80)
BEDROOM	(4.10X3.70)
TERRACE	(3.20X2.10)

Area: **230 m²**
Garden Area: **23 m²**



01

GROUND FLOOR

BUILDINGS(1,2,3,4,6,7,8)

E.LOBBY	(4.10X3.00)
RECEPTION	(6.65X6.00)
LIVING	(5.15X4.25)
LOBBY	(1.80X1.20)
TOILET	(2.10X1.20)
KITCHEN	(3.90X2.80)
LOBBY	(1.35X1.20)
BATHROOM	(2.55X1.90)
M.BEDROOM	(4.10X4.00)
BATHROOM	(2.50X1.80)
BEDROOM	(4.00X3.70)
BEDROOM	(4.10X3.80)
BEDROOM	(4.10X3.70)
TERRACE	(3.20X2.10)

Area: **220 m²**
Garden Area: **23 m²**



03

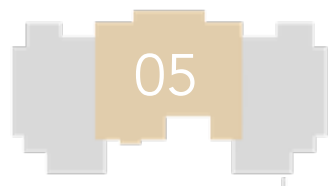
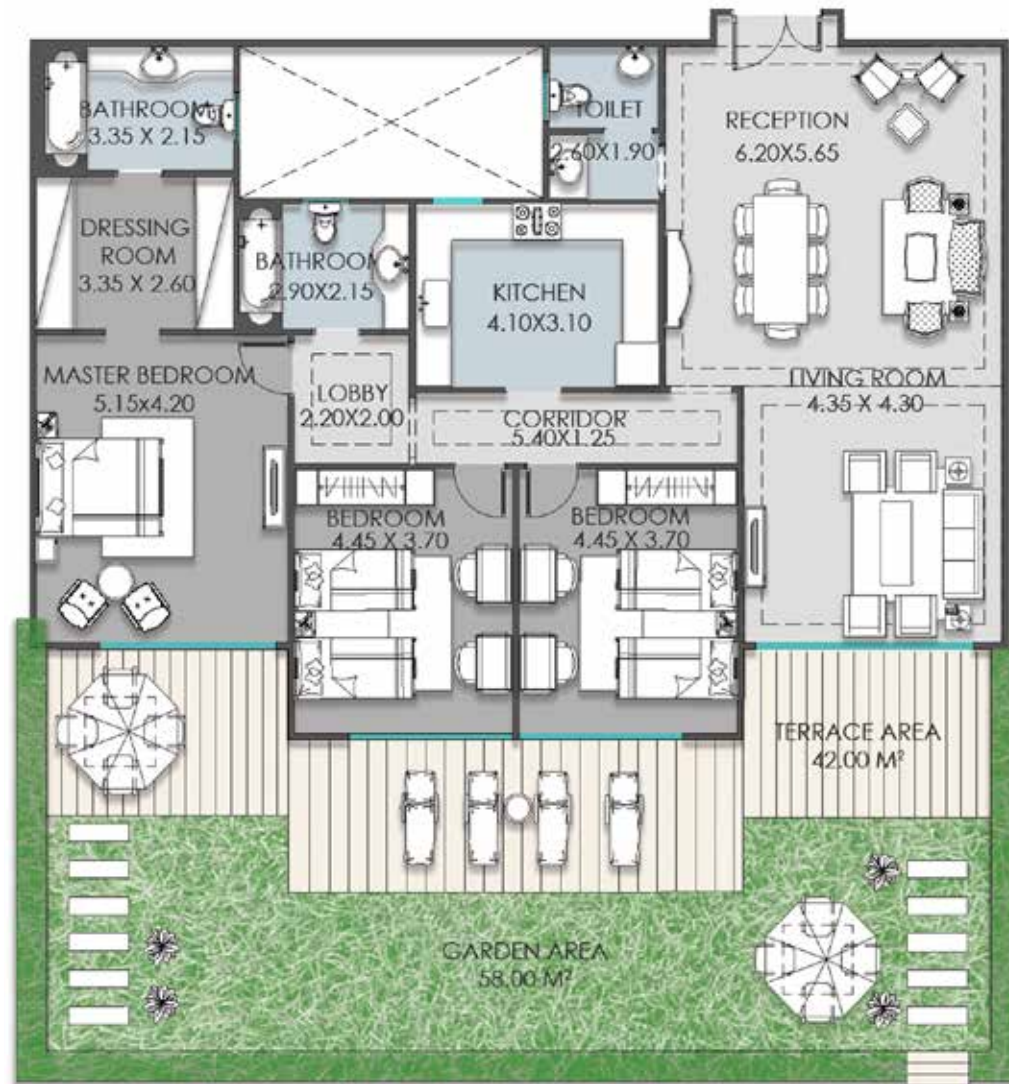
Floor plan 1. All dimensions are in imperial and metric, and measured from finish to finish excluding construction tolerance. 2. All materials dimensions, and drawings are approximately only. 3. Information is subject to change without notice, at developer's absolute discretion. 4. Actual area may vary from the stated area.

5. Drawings not to scale 6. All images used are illustrative purposes only and do not represent the actual size, features, specifications, fittings, and furnishing. 7. The developer reserves the right to make revisions / alterations, at its absolute discretion, without any liability whatsoever.

GROUND FLOOR BUILDINGS(1,2,3,4,6,7,8)

RECEPTION	(6.20X5.65)
LIVING ROOM	(4.35X4.30)
CORRIDOR	(5.40X1.25)
LOBBY	(2.20X2.00)
KITCHEN	(4.10X3.10)
TOILET	(2.60X1.90)
BATHROOM	(2.90X2.15)
BED ROOM	(4.45X3.70)
BED ROOM	(4.45X3.70)
MASTER BEDROOM	(5.15X4.20)
DRESSING ROOM	(3.35X2.60)
BATHROOM	(3.35X2.15)
TERRACE	(42.00 M2)

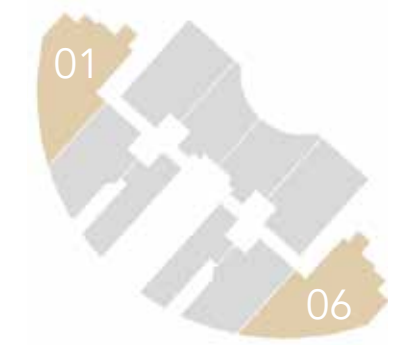
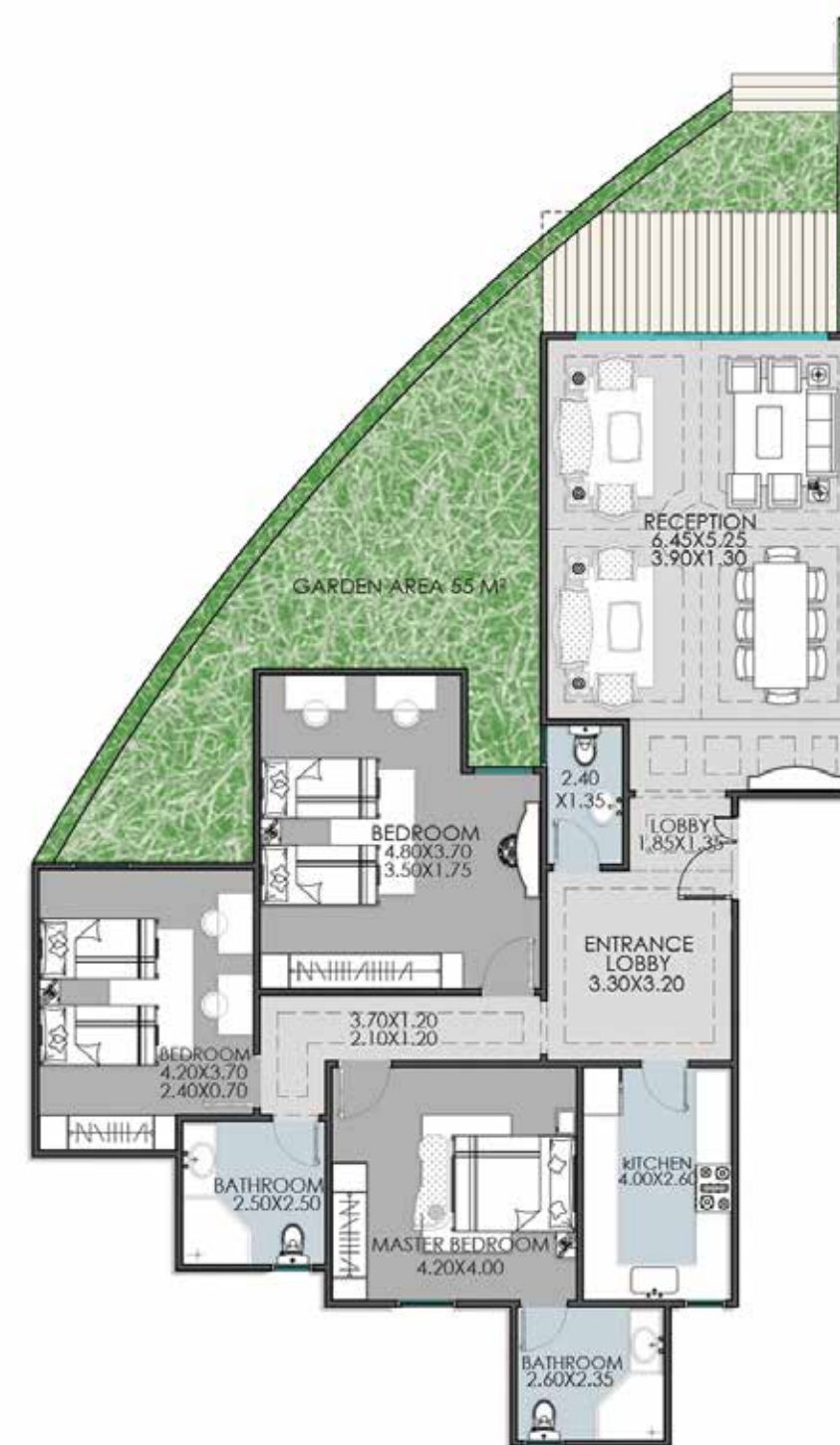
Area: **255 m²**
Garden Area: **83 m²**



GROUND FLOOR BUILDINGS(9)

ENTRANCE LOBBY	(3.30X3.20)
LOBBY	(1.85X1.35)
RECEPTION	(5.25X6.45)
	(3.90X1.30)
KITCHEN	(4.00X2.60)
TOILET	(1.35X2.40)
BEDROOM	(4.80X3.70)
	(3.50X1.75)
BEDROOM	(4.20X3.70)
	(2.40X0.70)
BATHROOM	(2.50X2.50)
MASTER BEDROOM	(4.20X4.00)
BATHROOM	(2.60X2.35)

Area: **195 m²**
Garden Area: **45 m²**



Floor plan 1. All dimensions are in imperial and metric, and measured from finish to finish excluding construction tolerance. 2. All materials dimensions, and drawings are approximately only. 3. Information is subject to change without notice, at developer's absolute discretion. 4. Actual area may vary from the stated area.

5. Drawings not to scale 6. All images used are illustrative purposes only and do not represent the actual size, features, specifications, fittings, and furnishing. 7. The developer reserves the right to make revisions / alterations, at its absolute discretion, without any liability whatsoever.

GROUND FLOOR BUILDINGS(9)

RECEPTION	(9.60X3.90)
KITCHEN	(3.30X2.80)
BEDROOM	(4.10X3.90)
BATHROOM	(2.20X2.10)
TOILET	(3.30X1.30)
MASTER BEDROOM	(4.40X3.90)
CORRIDOR	(5.10X1.30)

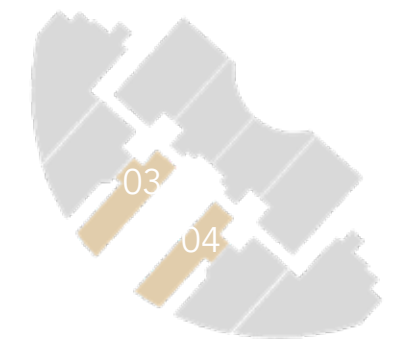
Area: **131 m²**
Garden Area: **25 m²**



GROUND FLOOR BUILDINGS(9)

ENTRANCE LOBBY	(2.00X1.15)
RECEPTION	(6.30X4.55)
KITCHEN	(4.10X2.65)
MASTER BEDROOM	(4.10 X3.30)
BATHROOM	(2.70X2.00)
LOBBY	(3.85X1.10)

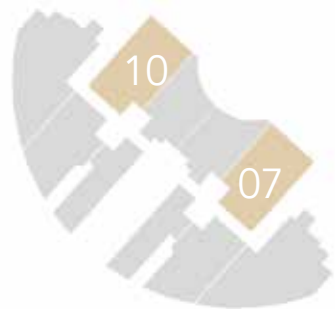
Area: **77 m²**
Garden Area: **13 m²**



GROUND FLOOR BUILDINGS(9)

RECEPTION	(9.30X4.10)
KITCHEN	(3.30X2.70)
TOILET	(2.10X1.40)
LOBBY	(2.40X1.30)
BEDROOM	(4.25X4.10)
LOBBY	(2.40X1.30)
CORRIDOR	(2.10X1.20)
	(2.90X1.30)
BATHROOM	(2.20X2.10)
MASTER BEDROOM	(4.10X4.10)

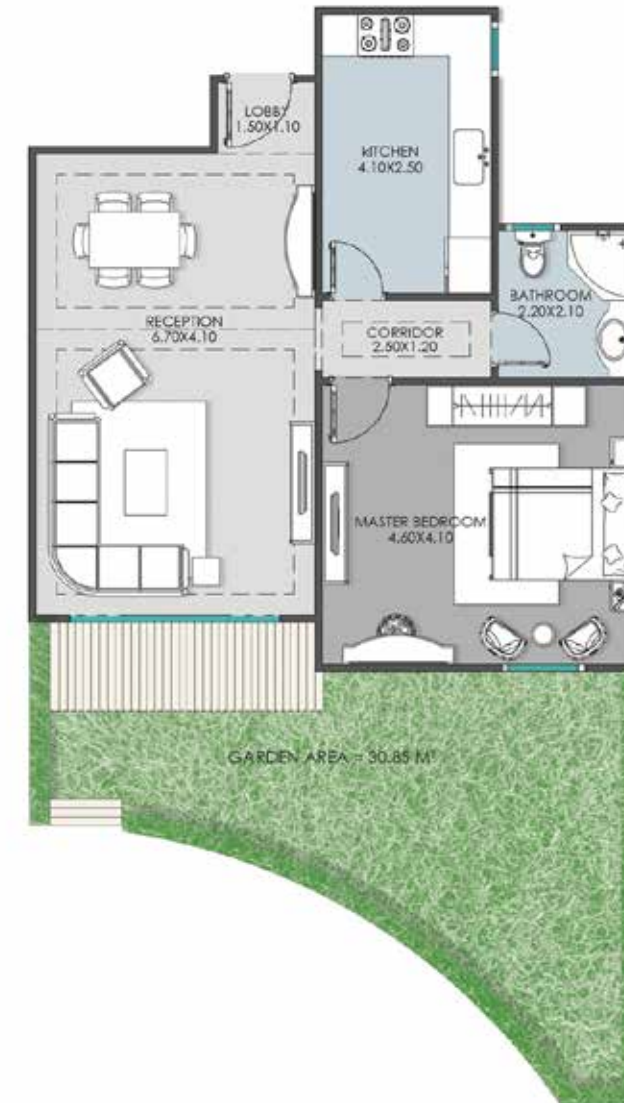
Area: **135 m²**
Garden Area: **36 m²**



GROUND FLOOR BUILDINGS(9)

LOBBY	(1.50X1.10)
RECEPTION	(6.70X4.10)
KITCHEN	(4.10X2.50)
MASTER BEDROOM	(4.60X4.10)
BATHROOM	(2.20X2.10)
CORRIDOR	(2.50X1.20)

Area: **77 m²**
Garden Area: **31 m²**



GROUND FLOOR

BUILDINGS(10,11,12,13,14,15,16)

GROUND FLOOR

BUILDINGS(10,11,12,13,14,15,16)

M. BEDROOM	(5.05X3.90)
BATHROOM	(2.50X1.80)
DRESSING	(1.90X1.10)
BEDROOM	(4.25X3.80)
BEDROOM	(4.10X4.10)
BEDROOM	(4.10X3.70)
CORRIDOR	(4.00X1.30)
	(2.40X1.30)
BATHROOM	(2.60X1.90)
BATHROOM	(2.30X2.20)
KITCHEN	(3.80X2.90)
LIVING	(3.85X3.85)
	(3.85X1.75)
RECEPTION	(6.00X5.20)
ENTRANCE LOBBY	(3.80X2.30)
TERRACE	(2.70X1.85)
	(2.70X1.85)
	(2.80X2.25)

Area: **238 m²**
Garden Area: **14 m²**



M. BEDROOM	(5.05X3.90)
BATHROOM	(2.50X1.80)
DRESSING	(1.80X1.10)
BEDROOM	(4.85X4.65)
LIVINGROOM	(5.55X3.80)
BEDROOM	(4.10X3.70)
BEDROOM	(4.10X4.10)
CORRIDOR	(2.40X1.30)
	(6.10X1.30)
BATHROOM	(2.30X2.20)
BATHROOM	(2.60X1.90)
KITCHEN	(3.80X2.90)
LIVING	(3.85X3.85)
	(3.85X1.75)
RECEPTION	(6.00X5.20)
ENTRANCE LOBBY	(3.80X2.30)
TERRACE	(2.70X1.85)
	(2.70X1.85)
	(2.80X2.25)

Area: **267 m²**
Garden Area: **14 m²**



1. All dimensions are in imperial and metric, and measured from finish to finish excluding construction tolerance. 2. All materials dimensions, and drawings are approximately only. 3. Information is subject to change without notice, at developer's absolute discretion. 4. Actual area may vary from the stated area.

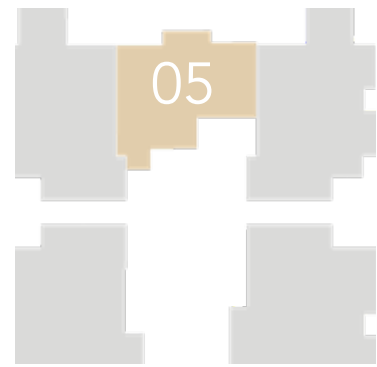
5. Drawings not to scale 6. All images used are illustrative purposes only and do not represent the actual size, features, specifications, fittings, and furnishing. 7. The developer reserves the right to make revisions / alterations, at its absolute discretion, without any liability whatsoever.

GROUND FLOOR

BUILDINGS(10,11,12,13,14,15.16)

ENTRANCE LOBBY	(1.90X1.30)
LOBBY	(1.30X0.90)
BEDROOM	(5.10X3.90)
M.BEDROOM	(4.40X4.10)
BATHROOM	(2.00X1.40)
KITCHEN	(3.10X2.90)
BATHROOM	(2.75X1.90)
RECEPTION	(9.60X4.10)
TERRACE AREA	18.00 M2

Area: **156 m²**
 Garden Area: **67 m²**



1. All dimensions are in imperial and metric, and measured from finish to finish excluding construction tolerance. 2. All materials dimensions, and drawings are approximately only. 3. Information is subject to change without notice, at developer's absolute discretion. 4. Actual area may vary from the stated area.

5. Drawings not to scale 6. All images used are illustrative purposes only and do not represent the actual size, features, specifications, fittings, and furnishing. 7. The developer reserves the right to make revisions / alterations, at its absolute discretion, without any liability whatsoever.

TYPICAL FLOOR

BUILDINGS(1,2,3,4,6,7,8)

E.LOBBY	(4.15X2.30)
LOBBY	(2.05X1.50)
TOILET	(2.10X1.50)
KITCHEN	(3.90X3.20)
RECEPTION	(5.40X5.15)
LOBBY	(4.65X4.20)
LOBBY	(4.95X1.20)
	(1.75X1.20)
BATHROOM	(2.80X2.20)
M.BEDROOM	(4.50X4.05)
BATHROOM	(2.45X2.40)
BEDROOM	(4.50X3.70)
BEDROOM	(4.10X3.80)
TERRACE	(4.20X2.85)
TERRACE	(3.90X1.70)
TERRACE	(1.80X1.45)

Area: 197 m²



16

11

TYPICAL FLOOR

BUILDINGS(1,2,3,4,6,7,8)

RECEPTION	(4.25X4.20)
	(6.15X5.40)
TOILET	(1.90X1.45)
KITCHEN	(4.10X3.10)
LOBBY	(2.20X2.00)
CORRIDOR	(5.40X1.25)
M.BEDROOM	(4.50X 4.05)
DRESSING ROOM	(3.35X2.60)
BATHROOM	(2.90X2.15)
BEDROOM	(4.45X3.70)
BEDROOM	(4.45X3.70)
BATHROOM	(2.90X2.15)
TERRACE	21 M ²
TERRACE	(3.90X1.70)

Area: 233 m²



25

22

Floor plan 1. All dimensions are in imperial and metric, and measured from finish to finish excluding construction tolerance. 2. All materials dimensions, and drawings are approximately only. 3. Information is subject to change without notice, at developer's absolute discretion. 4. Actual area may vary from the stated area.

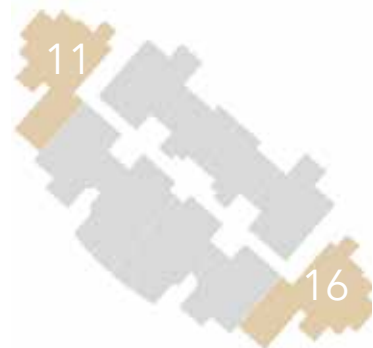
5. Drawings not to scale 6. All images used are illustrative purposes only and do not represent the actual size, features, specifications, fittings, and furnishing. 7. The developer reserves the right to make revisions / alterations, at its absolute discretion, without any liability whatsoever.

TYPICAL FLOOR

BUILDINGS (9)

E. LOBBY	(3.30X3.20)
RECEPTION	(6.45X5.25)
	(3.90X1.30)
KITCHEN	(4.00X2.60)
TOILET	(2.40X1.35)
BEDROOM	(3.70X3.70)
BEDROOM	(3.50X3.50)
BATHROOM	(2.10X2.00)
BEDROOM	(4.90X3.70)
BATHROOM	(2.50X2.30)
M. BEDROOM	(4.20X4.00)
BATHROOM	(2.60X2.35)
LOBBY	(1.85X1.45)
CORRIDOR	(6.00X1.10)
	(3.90X1.20)
TERRACE 1	(10.60 M2)
TERRACE 2	(1.80 M2)

Area: **209 m²**

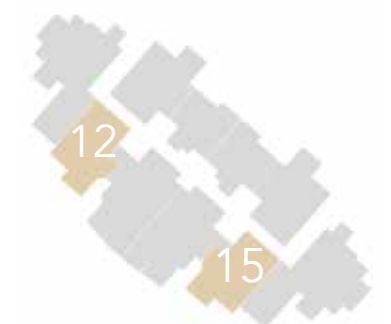


TYPICAL FLOOR

BUILDINGS (9)

RECEPTION	(9.60X3.90)
KITCHEN	(3.30X2.40)
BEDROOM	(4.10X3.90)
M. BEDROOM	(4.40X3.90)
BATHROOM	(2.90X2.00)
CORRIDOR	(6.90X1.30)
TERRACE	6.43M ²

Area: **128 m²**



Floor plan 1. All dimensions are in imperial and metric, and measured from finish to finish excluding construction tolerance. 2. All materials dimensions, and drawings are approximately only. 3. Information is subject to change without notice, at developer's absolute discretion. 4. Actual area may vary from the stated area.

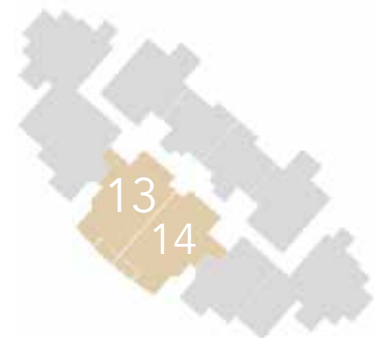
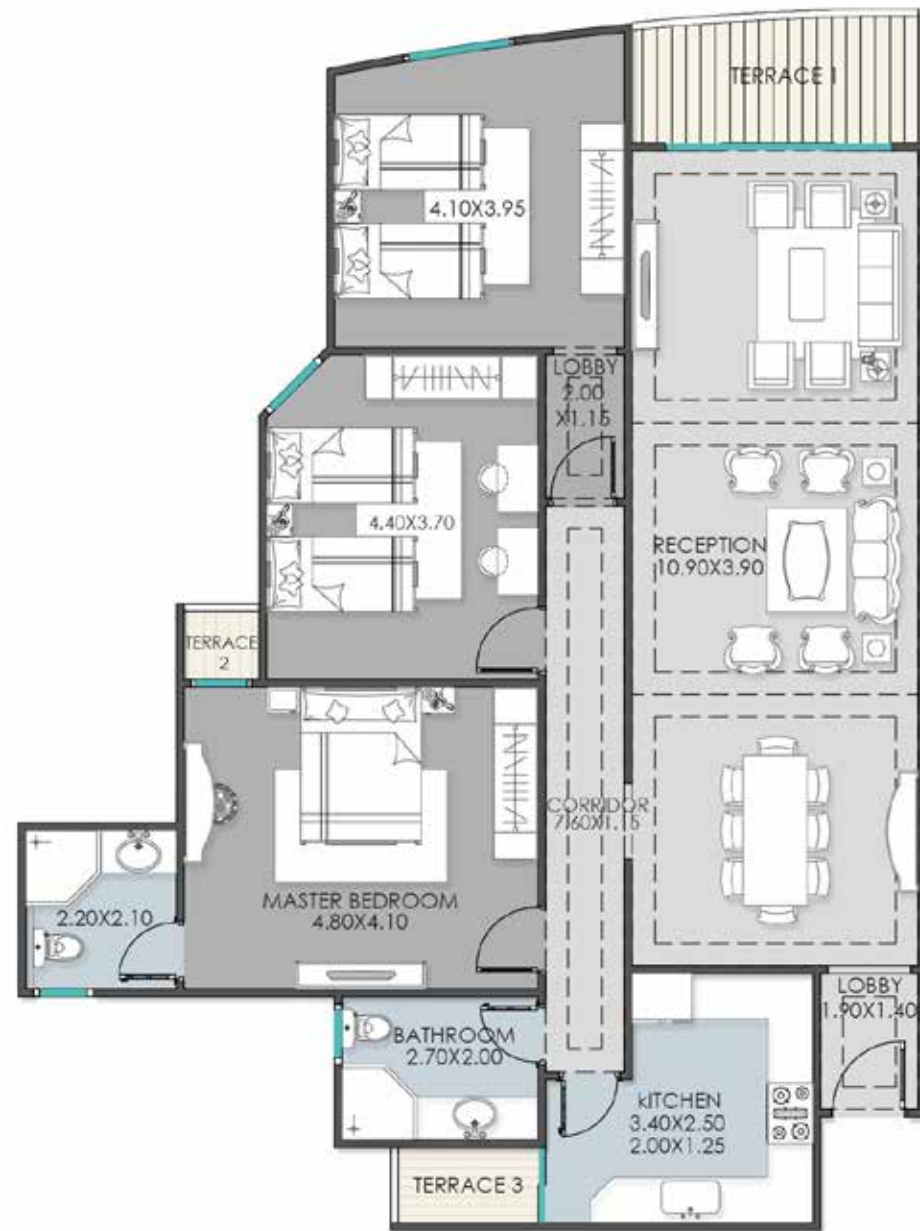
5. Drawings not to scale 6. All images used are illustrative purposes only and do not represent the actual size, features, specifications, fittings, and furnishing. 7. The developer reserves the right to make revisions / alterations, at its absolute discretion, without any liability whatsoever.

TYPICAL FLOOR

BUILDINGS (9)

E. LOBBY	(1.90X1.40)
RECEPTION	(10.90X3.90)
KITCHEN	(3.40X2.50)
	(2.00X1.25)
LOBBY	(2.00X1.15)
BEDROOM	(4.10X3.95)
BEDROOM	(4.40X3.70)
M. BEDROOM	(4.80X4.10)
BATHROOM	(2.20X2.10)
BATHROOM	(2.70X2.00)
CORRIDOR	(7.60X1.15)
TERRACE 1	6.67 M2
TERRACE 2	1.20 M2
TERRACE 3	2.20 M2

Area: 175 m²

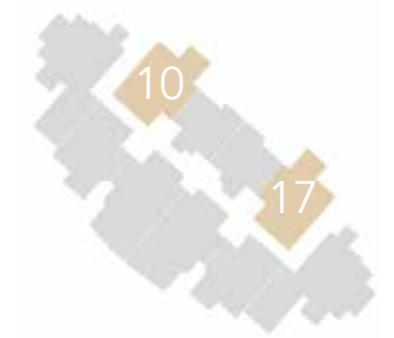


TYPICAL FLOOR

BUILDINGS (9)

RECEPTION	(9.30X4.10)
KITCHEN	(3.30X2.70)
TOILET	(2.10X1.40)
LOBBY	(1.40X1.20)
CORRIDOR	(2.10X1.20)
	(2.90X1.30)
BEDROOM	(4.25X4.10)
BATHROOM	(2.20X2.10)
M. BEDROOM	(4.10X4.10)
TERRACE	6.78M ²

Area: 135 m²

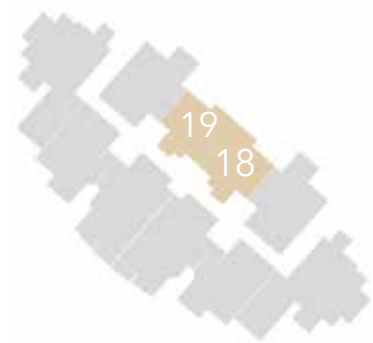
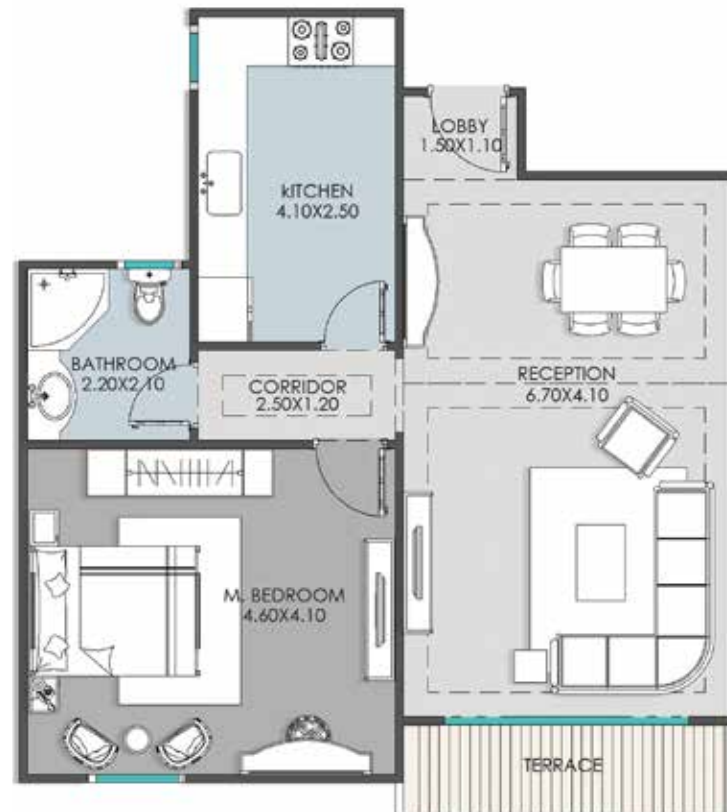


TYPICAL FLOOR

BUILDINGS (9)

E.LOBBLY	(1.50X1.10)
RECEPTION	(6.70X4.10)
KITCHEN	(4.10X2.50)
BATHROOM	(2.20X2.10)
M .BEDROOM	(4.60X4.10)
CORRIDOR	(2.50X1.20)
TERRCAE	5.19 M ²

Area: **82 m²**



TYPICAL FLOOR

BUILDINGS(10-16)

M. BEDROOM	(6.80X3.80)
BATHROOM	(2.90X2.00)
DRESSING	(2.00X1.20)
BEDROOM	(4.60X3.70)
BEDROOM	(5.40X4.10)
BEDROOM	(4.30X4.00)
CORRIDOR	(2.40X1.90)
	(2.50X1.30)
	(2.40X1.30)
BATHROOM	(3.10X1.90)
BATHROOM	(2.65X2.45)
KITCHEN	(3.55X2.80)
LIVING	(4.10X3.70)
RECEPTION	(7.90X2.80)
	(4.90X4.40)
ENTRANCE LOBBY	(3.90X2.30)
TERRACE	(3.50X2.60)
	(4.10X2.60)
	(3.00X1.00)

Area: **269 m²**



Floor plan 1. All dimensions are in imperial and metric, and measured from finish to finish excluding construction tolerance. 2. All materials dimensions, and drawings are approximately only. 3. Information is subject to change without notice, at developer's absolute discretion. 4. Actual area may vary from the stated area.

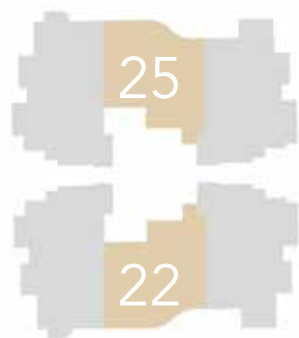
5. Drawings not to scale 6. All images used are illustrative purposes only and do not represent the actual size, features, specifications, fittings, and furnishing. 7. The developer reserves the right to make revisions / alterations, at its absolute discretion, without any liability whatsoever.

TYPICAL FLOOR

BUILDINGS(10,11,12,13,14,15,16)

M. BEDROOM	(4.20X3.60)
BEDROOM	(3.70X3.60)
BEDROOM	(4.50X3.60)
CORRIDOR	(3.30X1.20)
	(0.90X1.40)
BATHROOM	(2.20X2.00)
BATHROOM	(2.10X1.40)
KITCHEN	(3.40X3.00)
RECEPTION	(6.60X4.10)
	(4.00X3.60)
ENTRANCE LOBBY	(2.00X1.90)
TERRACE	(4.10X1.40)
TERRACE AREA	22.00 M ²

Area: 165 m²

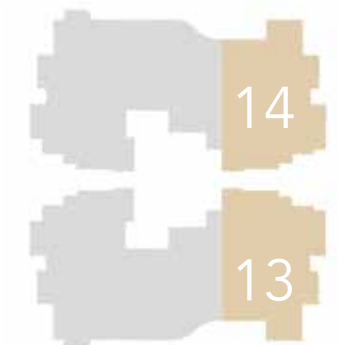


TYPICAL FLOOR

BUILDINGS(10,11,12,13,14,15,16)

M.BEDROOM	(5.50X3.70)
BATHROOM	(2.90X2.00)
DRESSING	(2.00X1.20)
BEDROOM	(4.60X3.70)
BEDROOM	(4.10X3.90)
CORRIDOR	(3.90X1.30)
	(2.40X1.70)
	(1.40X1.10)
BATHROOM	(3.10X2.20)
BATHROOM	(2.45X1.30)
	(1.20X1.10)
KITCHEN	(3.80X3.55)
RECEPTION	(6.30X4.20)
	(5.50X4.40)
ENTRANCE LOBBY	(3.90X2.30)
TERRACE	(4.20X1.90)
	(3.10X1.05)
	(2.40X1.70)
	(1.55X1.40)

Area: 209 m²



Floor plan 1. All dimensions are in imperial and metric, and measured from finish to finish excluding construction tolerance. 2. All materials dimensions, and drawings are approximately only. 3. Information is subject to change without notice, at developer's absolute discretion. 4. Actual area may vary from the stated area.

5. Drawings not to scale 6. All images used are illustrative purposes only and do not represent the actual size, features, specifications, fittings, and furnishing. 7. The developer reserves the right to make revisions / alterations, at its absolute discretion, without any liability whatsoever.

TYPICAL FLOOR

BUILDINGS(10-16)

ENTRANCE LOBBY	(3.90X2.25)
KITCHEN	(3.60X2.75)
TOILET	(2.30X2.25)
M. BEDROOM	(5.60X3.75)
BATHROOM	(2.85X1.90)
DRESSING ROOM	(1.90X1.20)
BEDROOM	(4.00X1.30)
BATHROOM	(2.90X2.05)
BEDROOM	(4.70X3.75)
BEDROOM	(4.20X3.85)
CORRIDOR	(9.65X1.30)
LOBBY	(1.35X1.30)
	(2.20X1.30)
DINNING	(3.85X1.75)
RECEPTION	(7.70X6.70)
TERRACE	(7.40X4.50)
TERRACE AREA:	15.00 M ²

Area: 280 m²

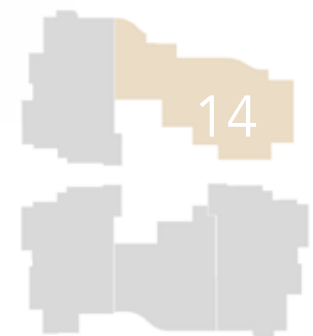


TYPICAL FLOOR

BUILDINGS(10-16)

RECEPTION	(7.45X5.90)
TOILET	(3.20X2.00)
KITCHEN	(3.70X3.10)
LIVING ROOM	(5.55X4.10)
BEDROOM	(4.35X4.25)
BEDROOM	(4.10X3.85)
BEDROOM	(3.65X3.60)
BATHROOM	(3.25X1.80)
MASTER BEDROOM	(5.05X3.90)
BATHROOM	(2.45X1.80)
DRESSING ROOM	(2.45X1.65)

Area: 250 m²



Floor plan 1. All dimensions are in imperial and metric, and measured from finish to finish excluding construction tolerance. 2. All materials dimensions, and drawings are approximately only. 3. Information is subject to change without notice, at developer's absolute discretion. 4. Actual area may vary from the stated area.

5. Drawings not to scale 6. All images used are illustrative purposes only and do not represent the actual size, features, specifications, fittings, and furnishing. 7. The developer reserves the right to make revisions / alterations, at its absolute discretion, without any liability whatsoever.

DUPLEXES

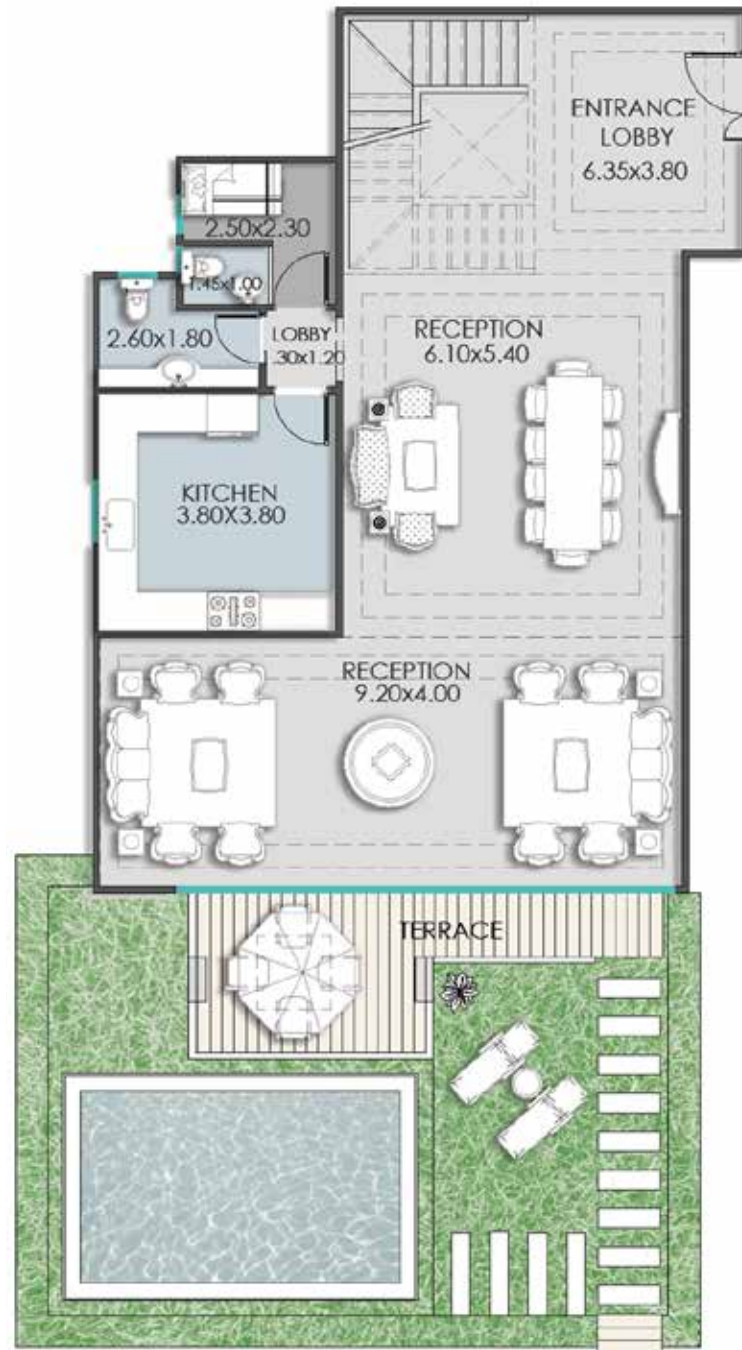


DUPLEXES

BUILDINGS (1,2,3,4,6,7,8)

ENTRANCE LOBBY	(6.35X3.80)
LOBBY	(1.30X1.20)
RECEPTION	(6.10X5.40)
	(9.20X4.00)
KITCHEN	(3.80X3.80)
BATHROOM	(2.60X1.80)
TOILET	(1.45X1.00)
MAID ROOM	(2.50X2.30)
TERRACE	(4.20X1.10)
	(3.80X2.65)

Area: **176 m²**



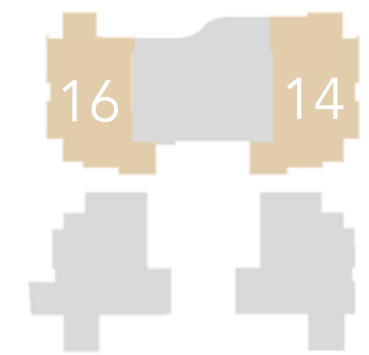
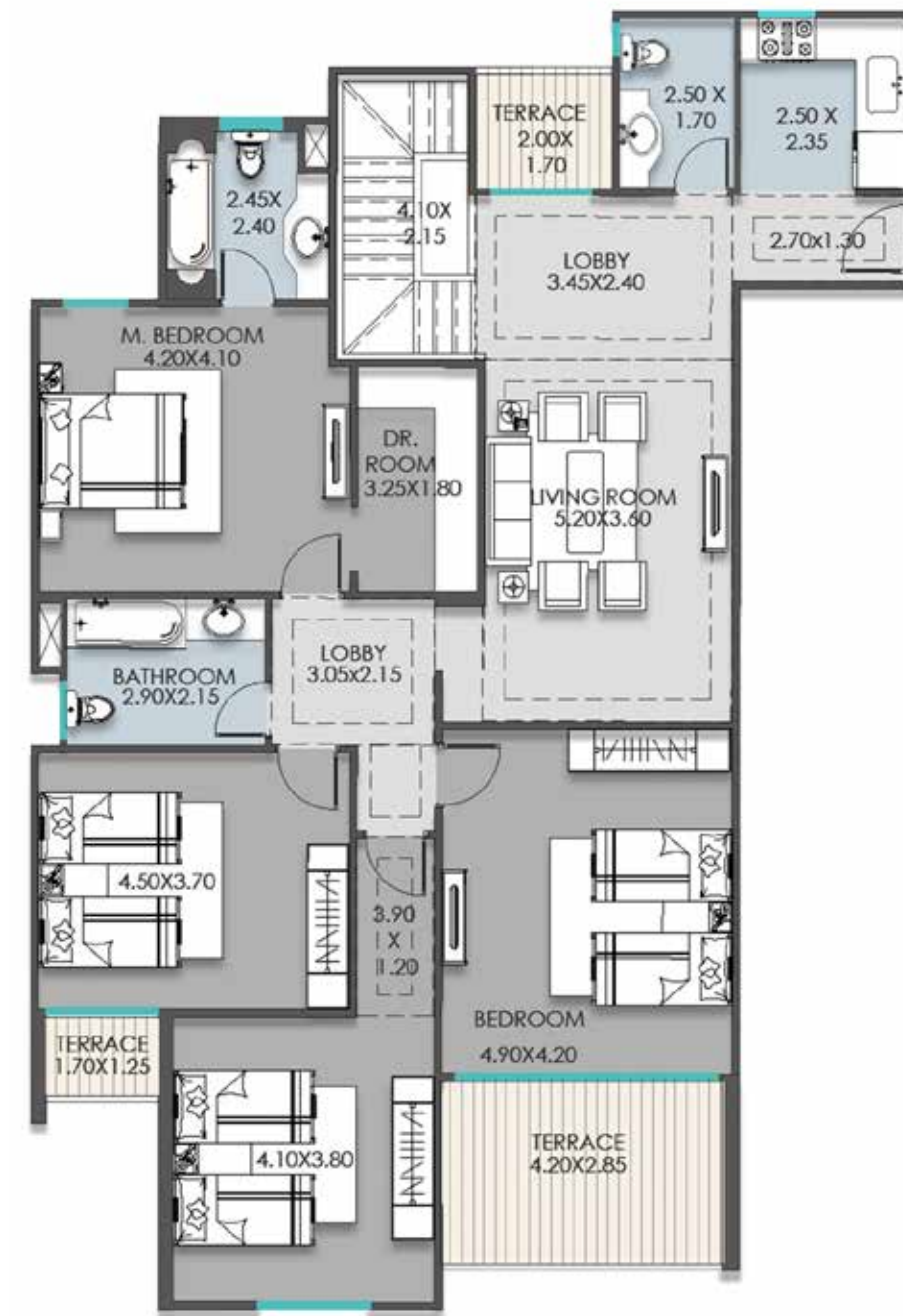
Ground Floor

DUPLEXES

BUILDINGS (1,2,3,4,6,7,8)

E.LOBBY	(3.45X2.40)
	(2.70X1.30)
STAIRS	(4.10X2.15)
LIVING	(5.20X3.60)
TOILET	(2.50X1.70)
KITCHEN	(2.50X2.35)
LOBBY	(3.05X2.15)
BATHROOM	(2.90X2.15)
M. BEDROOM	(4.20X4.10)
BATHROOM	(4.45X4.40)
DR.ROOM	(3.25X1.80)
LOBBY	(3.90X1.20)
BEDROOM	(4.10X3.80)
BEDROOM	(4.50X3.70)
BEDROOM	(4.90X4.20)
TERRACE	(4.20X2.85)
TERRACE	(1.70X1.25)
TERRACE	(2.00X1.70)

Area: **211 m²**
 Garden Area: **61 m²**
 Total Duplex Area: **387 m²**



First Floor

Floor plan 1. All dimensions are in imperial and metric, and measured from finish to finish excluding construction tolerance. 2. All materials dimensions, and drawings are approximately only. 3. Information is subject to change without notice, at developer's absolute discretion. 4. Actual area may vary from the stated area.

5. Drawings not to scale 6. All images used are illustrative purposes only and do not represent the actual size, features, specifications, fittings, and furnishing. 7. The developer reserves the right to make revisions / alterations, at its absolute discretion, without any liability whatsoever.

DUPLEXES

BUILDINGS (5)

DUPLEXES

BUILDINGS (5)

E.LOBBY & STAIRS	(7.15X3.90)
RECEPTION	(9.00X6.90)
CORRIDOR	(4.10X1.20)
LOBBY	(1.90X1.40)
W.C	(2.70X1.40)
KITCHEN	(5.00X3.10)
LOBBY	(2.60X1.80)
BEDROOM	(4.50X3.70)
BATHROOM	(3.10X1.80)
MAID ROOM	(3.10X2.85)
W.C	(1.70X1.30)
TERRACE	(13 M ²)

Area: **202 m²**



Lower Floor



Proposal 1:

LOBBY & STAIRS	(7.15X3.90)
LIVING	(4.40X3.20)
CORRIDOR	(4.10X1.20)
BEDROOM	(4.60X4.50)
BATHROOM	(3.10X2.90)
BEDROOM	(4.25X4.10)
BATHROOM	(3.10X2.30)
M. BEDROOM	(4.85X4.20)
DR.ROOM	(2.60X2.10)
BATHROOM	(2.60X2.10)
BEDROOM	(4.50X3.70)
TERRACE	(5.35 M ²)
TERRACE	(2.50 M ²)
TERRACE	(1.80 M ²)

Area: **202 m²**
Garden Area: **62 m²**



Upper Floor



Floor plan 1. All dimensions are in imperial and metric, and measured from finish to finish excluding construction tolerance. 2. All materials dimensions, and drawings are approximately only. 3. Information is subject to change without notice, at developer's absolute discretion. 4. Actual area may vary from the stated area.

5. Drawings not to scale 6. All images used are illustrative purposes only and do not represent the actual size, features, specifications, fittings, and furnishing. 7. The developer reserves the right to make revisions / alterations, at its absolute discretion, without any liability whatsoever.

DUPLEXES

BUILDINGS (5)

Proposal 2:

LOBBY & STAIRS	(7.15X3.90)
LIVING	(4.50X4.20)
CORRIDOR	(5.90X1.20)
BEDROOM 1	(4.50X4.10)
BATHROOM	(2.65X2.50)
BEDROOM 2	(4.25X4.10)
BATHROOM	(3.05X2.30)
M. BEDROOM	(5.45X4.50)
BATHROOM	(2.90X2.60)
BEDROOM 3	(4.50X4.35)
TERRACE	(2.50 M ²)

Area: **202 m²**



Upper Floor



DUPLEXES

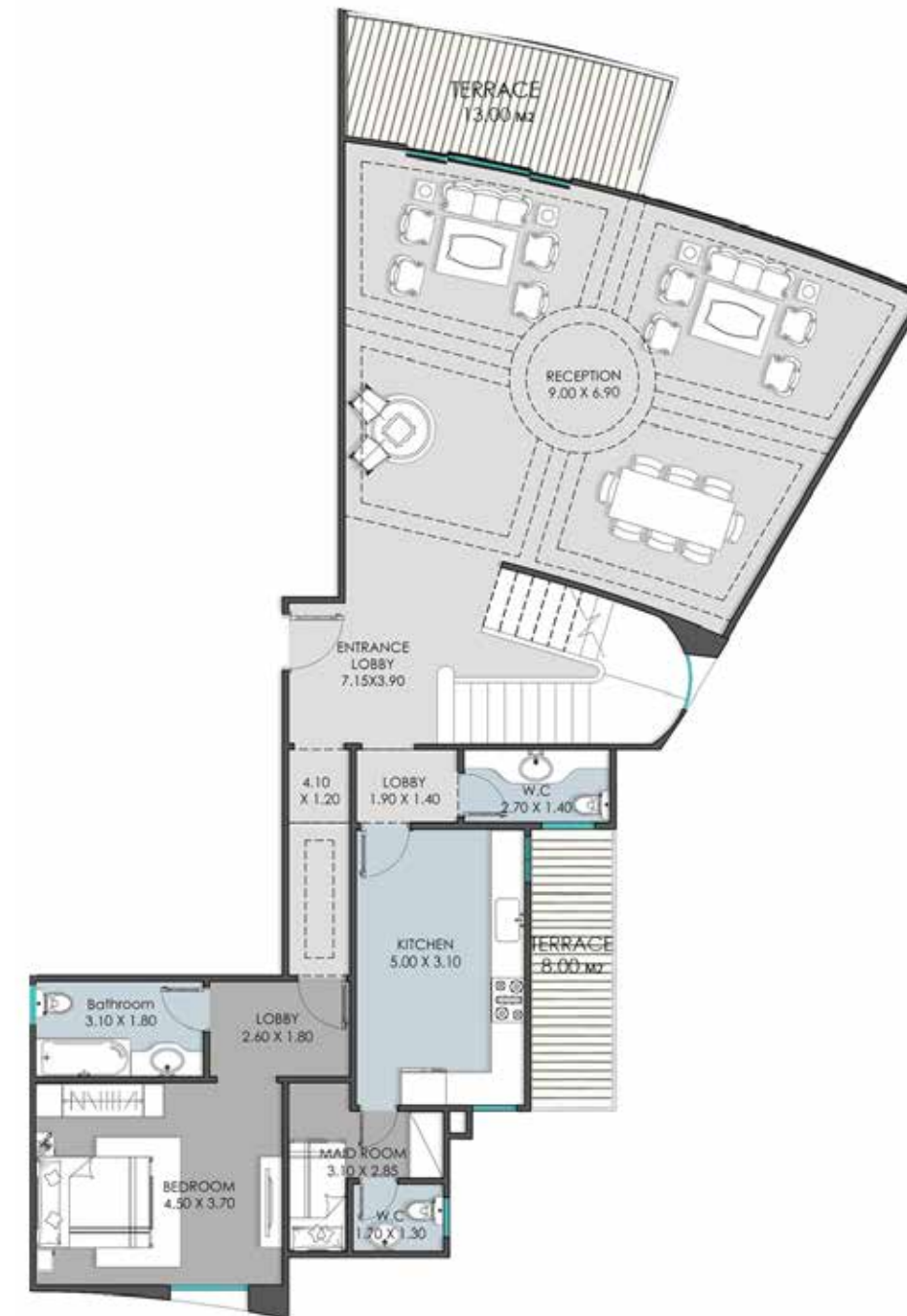
BUILDINGS (5)

E.LOBBY & STAIRS	(7.15X3.90)
RECEPTION	(9.00X6.90)
CORRIDOR	(4.10X1.20)
LOBBY	(1.90X1.40)
W.C	(2.70X1.40)
KITCHEN	(5.00X3.10)
LOBBY	(2.60X1.80)
BEDROOM	(4.50X3.70)
BATHROOM	(3.10X1.80)
MAID ROOM	(3.10X2.85)
W.C	(1.70X1.30)
TERRACE	(13 M ²)

Area: **202 m²**



Lower Floor



1. All dimensions are in imperial and metric, and measured from finish to finish excluding construction tolerance. 2. All materials dimensions, and drawings are approximately only. 3. Information is subject to change without notice, at developer's absolute discretion. 4. Actual area may vary from the stated area.

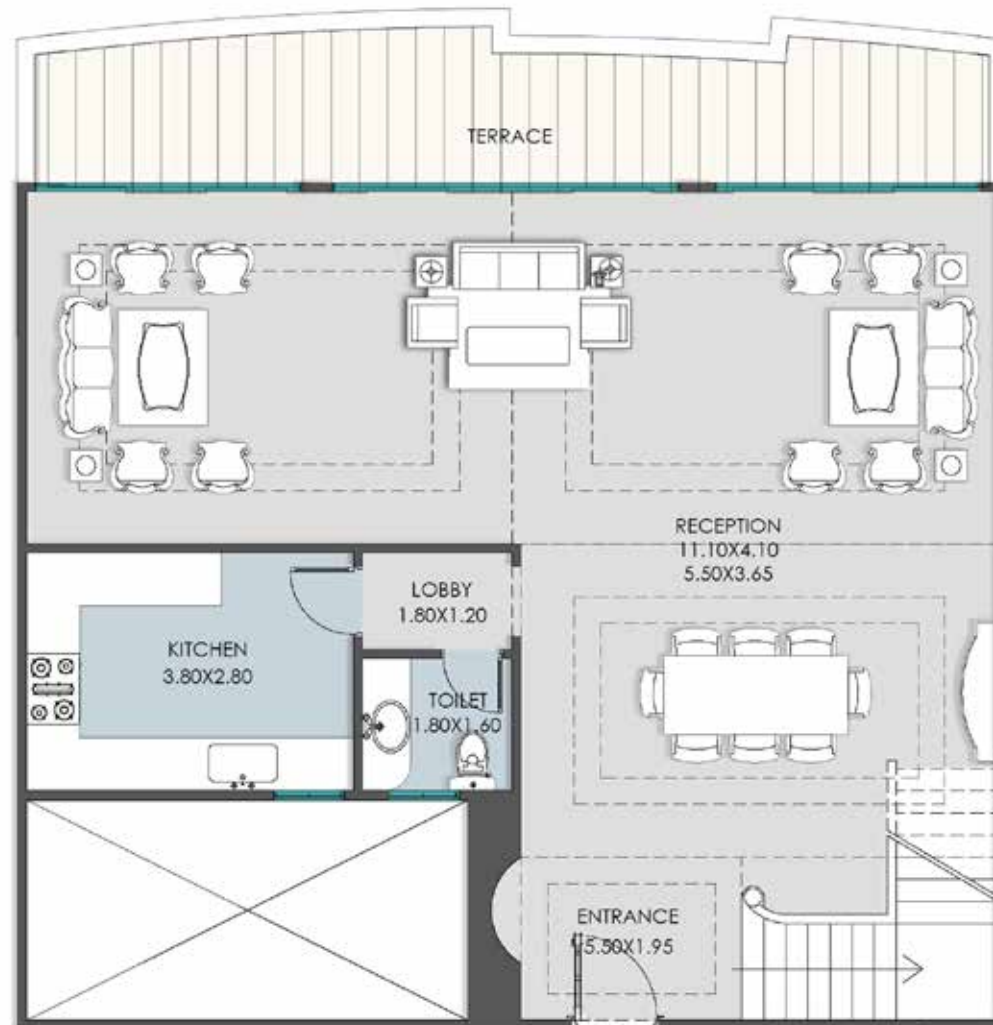
5. Drawings not to scale 6. All images used are illustrative purposes only and do not represent the actual size, features, specifications, fittings, and furnishing. 7. The developer reserves the right to make revisions / alterations, at its absolute discretion, without any liability whatsoever.

DUPLEXES

BUILDINGS (5)

E.LOBBY & STAIRS	(5.50X1.95)
RECEPTION	(11.10X4.10)
	(5.50X3.65)
LOBBY	(1.80X1.20)
W.C	(1.80X1.60)
KITCHEN	(3.80X2.80)
TERRACE	(14.30 M ²)

Area: **134 m²**



Ground Floor

DUPLEXES

BUILDINGS (5)

LOBBY & STAIRS	(4.90X2.35)
LIVING ROOM	(4.90X3.75)
LOBBY	(3.45X1.20)
BATHROOM	(2.80X2.20)
BEDROOM 1	(4.75X3.70)
BEDROOM 2	(5.50X3.50)
M. BEDROOM	(4.10X3.90)
DR. ROOM	(3.90X1.90)
BATHROOM	(2.30X2.20)

Area: **134 m²**
Total Duplex Area: **268 m²**



First Floor

Floor plan 1. All dimensions are in imperial and metric, and measured from finish to finish excluding construction tolerance. 2. All materials dimensions, and drawings are approximately only. 3. Information is subject to change without notice, at developer's absolute discretion. 4. Actual area may vary from the stated area.

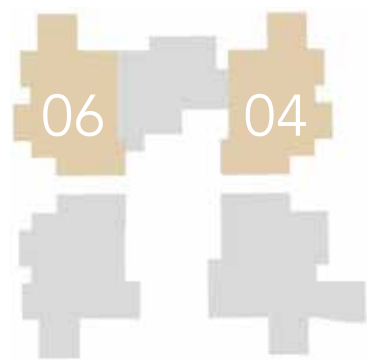
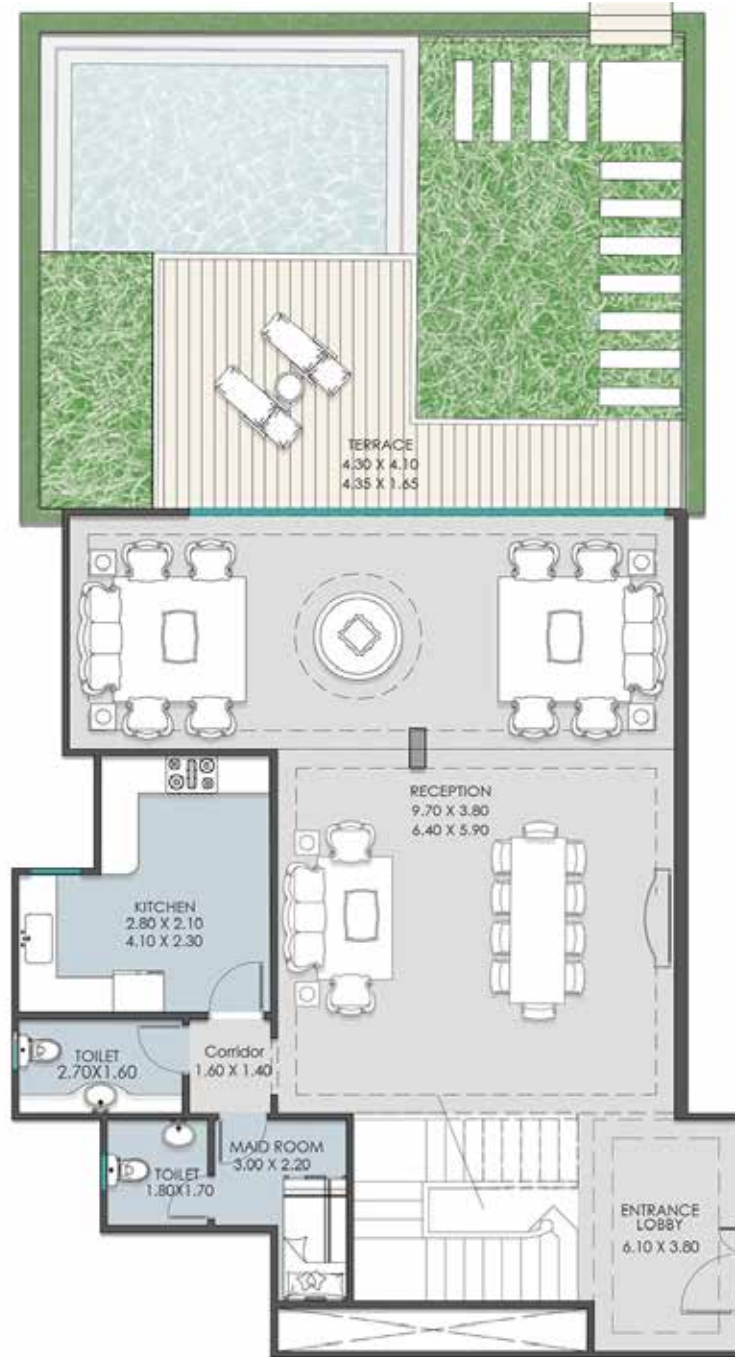
5. Drawings not to scale 6. All images used are illustrative purposes only and do not represent the actual size, features, specifications, fittings, and furnishing. 7. The developer reserves the right to make revisions / alterations, at its absolute discretion, without any liability whatsoever.

DUPLEXES

BUILDINGS (10,11,12,13,14,15,16)

RECEPTION	(9.70X3.80)
	(6.40X5.90)
CORRIDOR	(1.60X1.40)
BATHROOM	(2.70X1.60)
MID ROOM	(3.00X2.20)
BATHROOM	(1.80X1.70)
KITCHEN	(2.80X2.10)
	(4.10X2.30)
ENTRANCE LOBBY	(6.10X3.80)
TERRACE	(4.30X4.10)
	(4.35X1.65)

Area: **190 m²**



Ground Floor

DUPLEXES

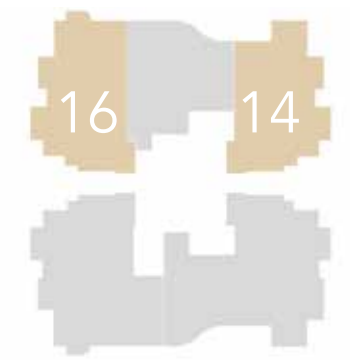
BUILDINGS (10,11,12,13,14,15,16)

M. BEDROOM	(5.80X3.70)
BATHROOM	(2.50X2.00)
DRESSING	(3.10X1.95)
BEDROOM	(4.25X3.80)
BEDROOM	(4.70X3.50)
BEDROOM	(4.10X4.10)
	(2.40X1.30)
CORRIDOR	(3.70X1.30)
	(1.30X1.30)
BATHROOM	(3.10X2.20)
KITCHEN	(2.30X2.40)
LIVING	(6.10X5.20)
ENTRANCE LOBBY	(2.40X1.30)
	(3.90X3.10)
TERRACE	(4.15X3.00)
	(3.10X1.10)
	(2.00X1.30)

Area: **215m²**

Garden Area: **55 m²**

Total Duplex Area: **405 m²**



First Floor

Floor plan 1. All dimensions are in imperial and metric, and measured from finish to finish excluding construction tolerance. 2. All materials dimensions, and drawings are approximately only. 3. Information is subject to change without notice, at developer's absolute discretion. 4. Actual area may vary from the stated area.

5. Drawings not to scale 6. All images used are illustrative purposes only and do not represent the actual size, features, specifications, fittings, and furnishing. 7. The developer reserves the right to make revisions / alterations, at its absolute discretion, without any liability whatsoever.



PENTHOUSES

PENTHOUSES

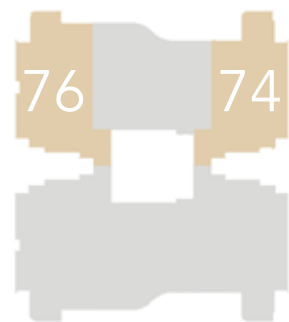
BUILDINGS (1,2,3,4,6,7,8)

PENTHOUSES

BUILDINGS (1,2,3,4,6,7,8)

M.BEDROOM	(4.60X4.30)
BATHROOM	(2.45X2.40)
BEDROOM	(4.30X3.80)
BEDROOM	(3.90X3.80)
CORRIDOR	(4.95X1.20)
	(1.75X1.20)
BATHROOM	(2.60X2.20)
KITCHEN	(3.90X3.10)
RECEPTION	(5.30X4.50)
LIVING	(6.00X4.20)
ENTRANCE LOBBY	(4.10X2.60)
TERRACE	(4.20X1.90)
	(3.10X1.05)
	(1.40X1.70)
	(1.50X1.35)
STAIR	(4.10X2.40)

Area: **209 m²**

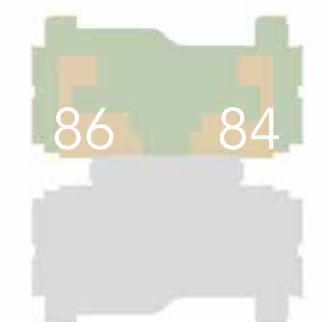
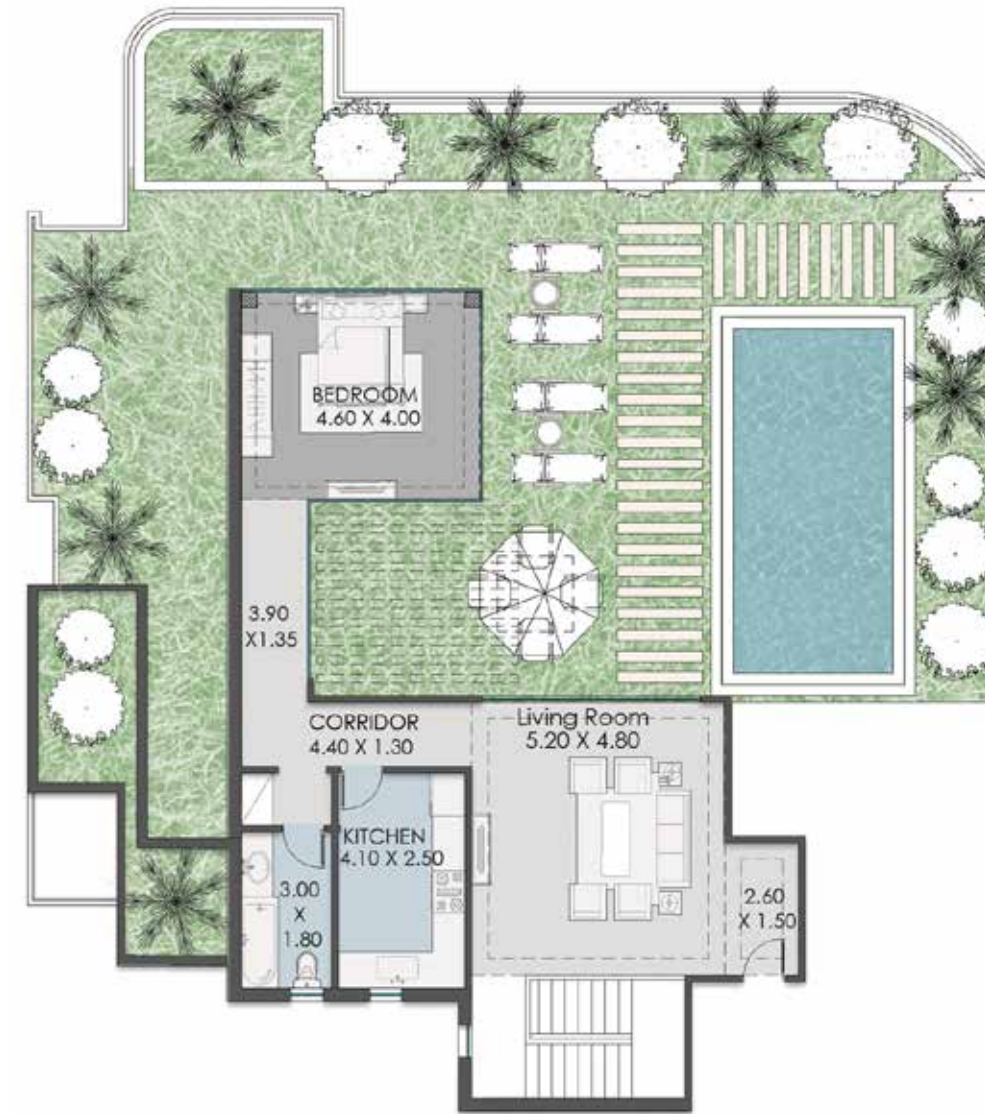


First Floor



LIVING	(5.20X4.80)
CORRIDOR	(3.90X1.35)
	(4.40X1.30)
BATHROOM	(3.00X1.80)
KITCHEN	(4.10X2.50)
BEDROOM	(4.60X4.00)

Area: **84 m²**
 Garden Area: **120 m²**
 Total Penthouse Area: **293 m²**



Penthouse

Floor plan 1. All dimensions are in imperial and metric, and measured from finish to finish excluding construction tolerance. 2. All materials dimensions, and drawings are approximately only. 3. Information is subject to change without notice, at developer's absolute discretion. 4. Actual area may vary from the stated area.

5. Drawings not to scale 6. All images used are illustrative purposes only and do not represent the actual size, features, specifications, fittings, and furnishing. 7. The developer reserves the right to make revisions / alterations, at its absolute discretion, without any liability whatsoever.

PENTHOUSES

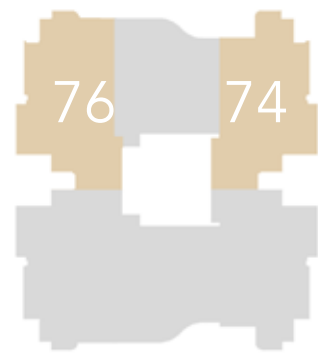
BUILDINGS (10,11,12,13,14,15,16)

PENTHOUSES

BUILDINGS (10,11,12,13,14,15,16)

M. BEDROOM	(5.50X3.60)
BATHROOM	(3.10X1.95)
DRESSING	(1.95X1.20)
BEDROOM	(4.60X3.65)
BEDROOM	(4.10X3.95)
CORRIDOR	(5.35X1.30)
	(1.40X1.30)
	(1.50X1.25)
BATHROOM	(3.10X2.10)
BATHROOM	(2.35X2.25)
KITCHEN	(3.85X3.80)
RECEPTION	(5.40X4.30)
	(5.20X4.10)
ENTRANCE LOBBY	(2.85X2.25)
TERRACE	(4.20X1.90)
	(3.10X1.05)
	(1.40X1.70)
	(1.50X1.35)
STAIR	(4.10X2.60)

Area: 209 m²

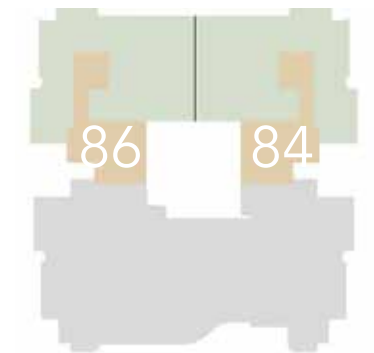


First Floor



LIVING	(4.20X3.90)
CORRIDOR	(4.10X1.60)
	(4.00X1.30)
BATHROOM	(2.40X1.90)
KITCHEN	(2.55X2.10)
BEDROOM	(3.90X3.40)

Area: 84 m²
 Garden Area: 120 m²
 Total Penthouse Area: 293 m²



Penthouse

1. All dimensions are in imperial and metric, and measured from finish to finish excluding construction tolerance. 2. All materials dimensions, and drawings are approximately only. 3. Information is subject to change without notice, at developer's absolute discretion. 4. Actual area may vary from the stated area.

5. Drawings not to scale 6. All images used are illustrative purposes only and do not represent the actual size, features, specifications, fittings, and furnishing. 7. The developer reserves the right to make revisions / alterations, at its absolute discretion, without any liability whatsoever.



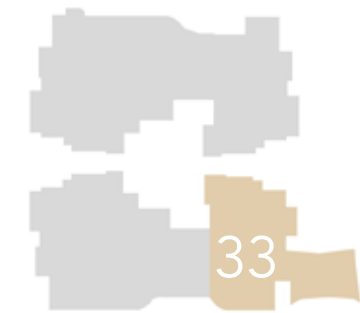
LINKED VILLAS

LINKED VILLAS

BUILDINGS (10,11,12,13,14,15)

ENTRANCE LOBBY	(3.65X3.00)
LOBBY	(1.70X1.10)
BATHROOM	(2.50X1.65)
	(2.55X2.00)
KITCHEN	(4.00X3.25)
MAIDROOM	(3.10X1.25)
BATHROOM	(2.00X1.70)
RECEPTION	(10.30X8.95)
	(2.55X1.40)
LIVING AREA	(4.10X3.40)
TERRACE AREA	14.00 M2

Area: **279 m²**
Pool Area: **52 m²**



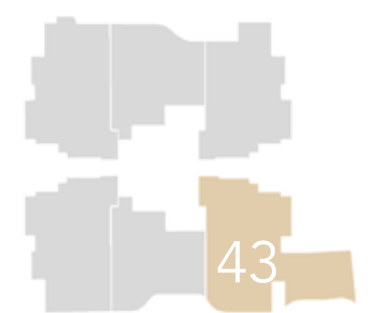
Ground Floor

LINKED VILLAS

BUILDINGS (10,11,12,13,14,15)

ENTRANCE LOBBY	(2.30X2.20)
CORRIDOR	(5.65X1.20)
	(5.90X1.25)
BEDROOM	(4.30X3.75)
DRESSING ROOM	(2.30X2.00)
BATHROOM	(2.90X2.10)
BEDROOM	(4.30X3.80)
M. BEDROOM	(4.40X4.25)
DRESSING ROOM	(3.50X1.85)
BATHROOM	(3.50X1.95)
LOBBY	(5.50X3.10)
M. BEDROOM	(4.10X4.05)
DRESSING ROOM	(2.50X2.45)
CORRIDOR	(2.55X1.90)
BATHROOM	(3.40X1.90)
LIVING ROOM	(4.70X4.60)
M. BEDROOM	(4.25X3.35)
LOBBY	(1.80X1.20)
BATHROOM	(3.10X1.80)

Area: **284 m²**
Total Duplex Area: **562 m²**



First Floor

Floor plan 1. All dimensions are in imperial and metric, and measured from finish to finish excluding construction tolerance. 2. All materials dimensions, and drawings are approximately only. 3. Information is subject to change without notice, at developer's absolute discretion. 4. Actual area may vary from the stated area.

5. Drawings not to scale 6. All images used are illustrative purposes only and do not represent the actual size, features, specifications, fittings, and furnishing. 7. The developer reserves the right to make revisions / alterations, at its absolute discretion, without any liability whatsoever.



blooming life stories..

Concord Plaza Mall, Gate 03
90th Street, New Cairo, Egypt
T +20 2 253 65 134 - 36
F +20 2 253 65 130
E info@altameerarabian.com
W www.altameerarabian.com



ALTAMEER ARABIAN
MARZOUK MANSOUR