



PUKKA

— NEW CAPITAL —

العاصمة الإدارية الجديدة

الموقع يفرق...



## ABOUT THE **DEVELOPER**

Master Builder Group (MBG) are the largest and best real estate developers at Delta area. MBG's projects vary between medical, residential, educational, architectural design, construction and communities.

MBG maintains a full time staff of well trained real estate professionals who continually strive to provide top quality for our clients. Our current projects are: Sunset Resort the first Resort in Ras El-Bar, El Ola City the first Compound in Mansoura, Mansoura International Medical Center (MIMC), El Safa Mall, Nile Academy and much more.





## The New Capital

The New Capital is wide range project worked on by the government which aims to become the largest economic hub in the MENA region. Through a proper infrastructure, the new capital is going to include the new presidential residence, some main ministries and councils taking advantage of its strategic location between Cairo and Suez nearby the Cairo Suez road. Be a part of the Government's new project, The New Capital where you will be surrounded with all the facilities you need. You will enjoy a proper infrastructure and a quiet environment where you be able to start a new life.

## CONNECTIVITY

**4 MIN**

From The Green River

**3 MIN**

From The Expo City

**5 MIN**

From ALMASA Hotel

**2 MIN**

From Cathedral of New Capital

**5 MIN**

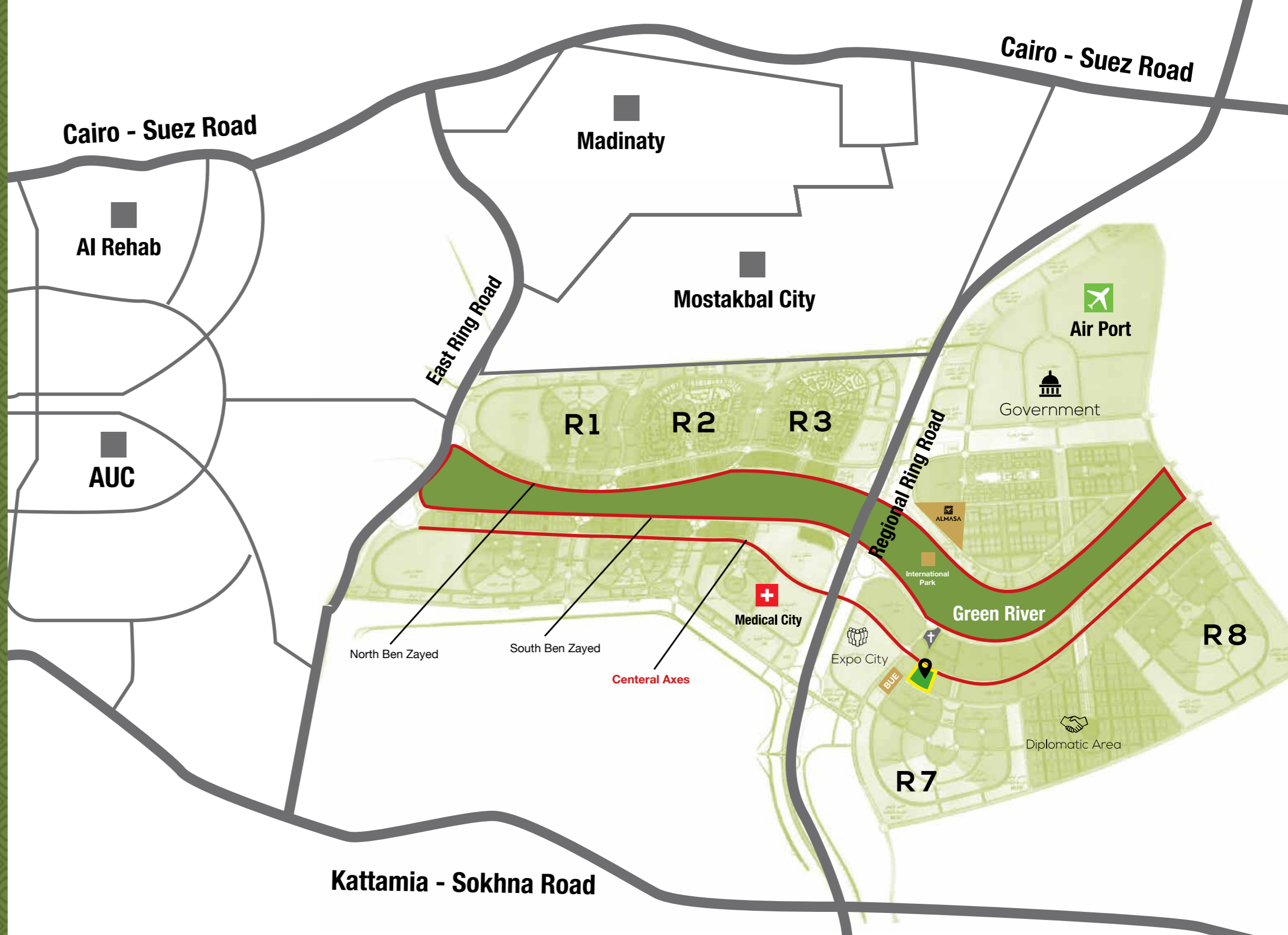
From Medical City

**10 MIN**

From The Government Area

**12 MIN**

From The Airport of New Capital





## الموقع يفرق LOCATION MAP

Our strategic and prime location at the new capital, heart of new capital, surrounded by many strategic icons in the new capital, so you will always be connected.





## About The Project

PUKKA is our project in the new capital. The project is built on 41 acres. It consists of 42 buildings and 5 different types of units. Our ultra-modern architectural design will not only influence the way people live in our community, but the way Egyptians live too. What makes Pukka unique is the prime location, green areas, event lounge, swimming pools, clubhouse, solar system panels, pet care service, premium mall, health club, spa and a food court.



# GREENERY

As your health is our number one concern, we made sure you are surrounded by greenery as we all deserve some peace and quiet after a long day at work and a chance to communicate with nature away from the hectic life of the city.





## Modern Designs

Combining comfort with uniqueness and adding more than 20 years of experience we introduce you to our exclusive architecture where we have given special care to each unit providing inevitable results through offering exceptional features, space, and floor plans for an exquisite experience.



# Building Access Card

At Pukka Privacy and Safety are our first priority, that's why in addition to around the clock security, You will be having a building access card so you won't find a random/ strangers accessing your building.



# COMMUNITY

Nothing is complete, without the right company and Pukka is the right place with the perfect community where you can live next door to like minded individuals sharing your ups and downs and creating immortal memories.

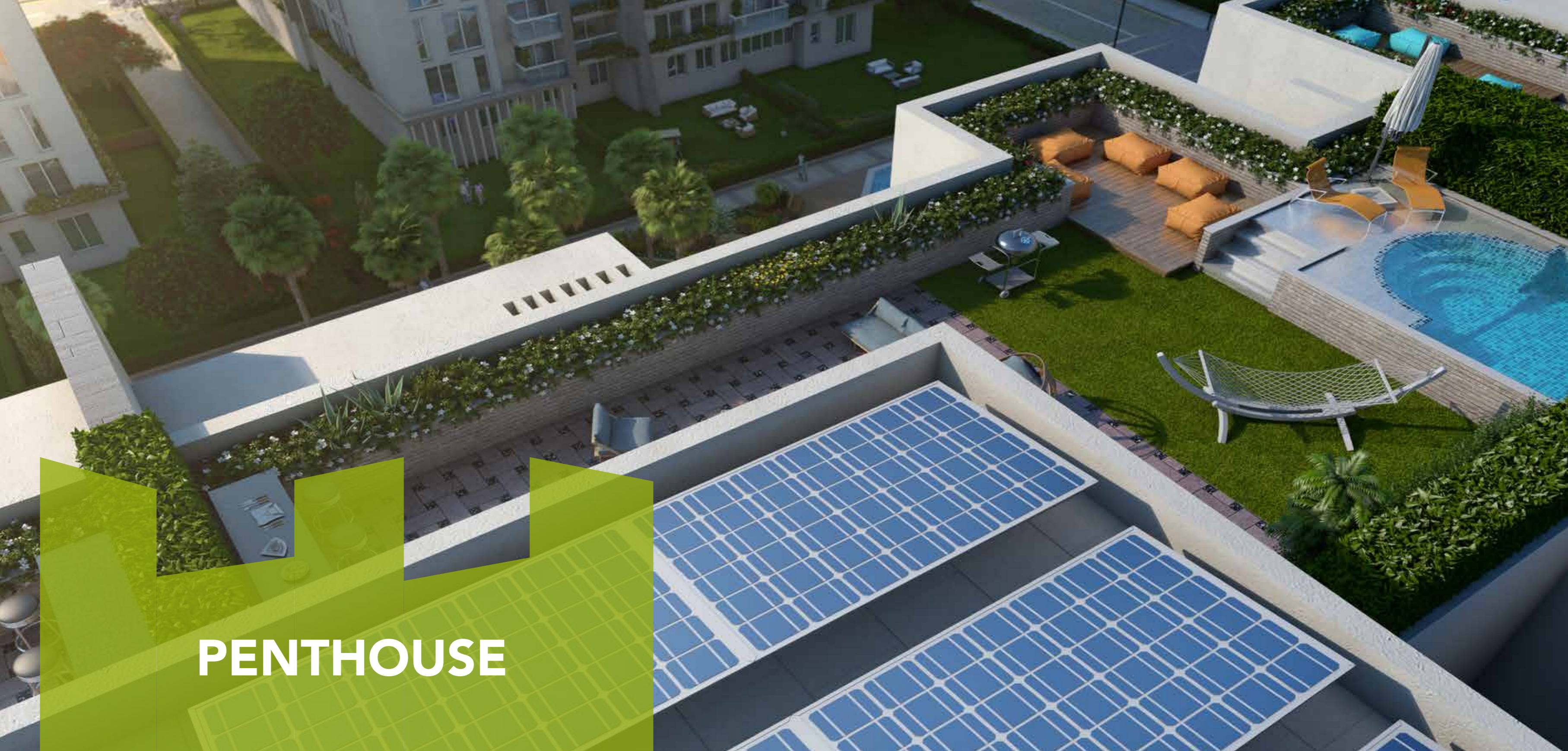


# LUXURY

Bringing Luxury to the New capital, we made sure you are given the luxurious lifestyle you aspire the most, through paying attention to detail, originality, exclusivity and high quality to our residents to make sure they live the royalty experience we all crave.



**PRIVATE GARDEN**



# PENTHOUSE

# PENTHOUSE





## **BICYCLE** SHARING SYSTEM

Not all of us have time for the gym but instead of walking to the mall or to the clubhouse you can just bike there with our specific bicycling lanes you will be able to cycle around Pukka safely enjoying the greenery and the fresh air.





# CAPITAL WALK

## COMMERCIAL AREA

You just need to chill & relax, no need to go anywhere for food or shopping, we're bringing it all in the palm of your hand, with our commercial area pepped up with a distinctive collection of restaurants and cafes, you won't need to go anywhere far.



MIMARLIK

PUKKA CAPITAL WALK

AIVA

PUKKA  
NEW CAPITAL

PUKKA  
NEW CAPITAL

AW CORPORATE

PHARMACY

**BUSINESS CENTER**



# MEDICAL CENTER & CLINICS

Your Health care is the most important thing for us so we created Medical Zone so you can find all what you need in one place thinking of polyclinics.



CLUB HOUSE

SKY POOL

A woman wearing a large straw hat with a white flower, sunglasses, and a dark bikini is standing in a rooftop infinity pool. She is looking out over a city skyline with modern buildings under a clear blue sky. The pool's edge is a glass railing with metal posts. The water is a vibrant blue, and the city buildings are reflected in it.

## SKY POOL

FIRST-CLASS EXPERIENCE  
TAKE A DEEP.



**EVENT LOUNGE**



**HOUSEKEEPING**





THE REAL **PET-FRIENDLY**  
ENVIRONMENT



A SENSATIONAL  
**OPEN-AIR GYM**

A gym built outside in a public park, with the all-weather construction of its exercise machines somewhat modeled on playground equipment.



*Pool*  
VIEW

TYPE M



*Smart*  
CHOICE

TYPE B



THE  
*Boulevard*

TYPE G



GARDENS

TYPE N



*Elite*

TYPE C



The inherent nature of having all disciplines under one roof fosters a collaborative design team approach which translates into providing superior designs, well coordinated documents and excellent communication between rmc and its client's.





EHAFC Consulting Engineers was founded in Egypt in 1971 and has emerged as an international world-ranked firm with 9 registered branches in UAE, KSA, Qatar and Oman. With more than 1,800 professionals, EHAFC offers Design, Engineering, Construction Supervision and Project Management Services to almost all types of projects and market sectors



**MBG**  
DEVELOPMENT

**16603**

107, El Thawra st., Heliopolis, Cairo

[www.pukkanewcapital.com](http://www.pukkanewcapital.com)