



Solaré

R A S E L - H E K M A

A photograph of a poolside scene. In the foreground, a wooden lounge chair with a green and white striped cushion is positioned on a light-colored concrete deck. To the right, a portion of a blue and white striped umbrella is visible. The background shows the edge of a swimming pool with clear, rippling blue water. The scene is bathed in bright sunlight, creating sharp shadows of palm trees on the concrete deck. The text "Italian Summers Inspired Haven" is written in a white, cursive font across the center of the image.

*Italian
Summers Inspired
Haven*

Delve Into *La Dolce Vita*

Up-close, an elevated reality rises with your coastal aspirations, 31 meters high above sea level to present you with an innovative vision of 10 elegantly-appointed zones; each radiating a distinct character of its own, inspired by Italy's native summer towns while lapping the Dolce Vita lifestyle in the heart of the North Coast.



Italian Pillars



Levels



Togetherness



Culinary
Delights



Music



Art

Italian Inspired Architecture



Levels Guaranteeing Views



*Italian Inspired
Landscapes*



Panoramic Views



Seamless Exterior Designs



Bringing
Il Dolce Far Niente
To Egypt's North Coast



Introducing Solaré

As you step through Solaré's private gate, picturesque vistas serenade your arrival into an exclusive water-front escape where intricate luxury and Ras El Hekma's unparalleled serenity intertwine to captivate you, wherever you turn. From a far, Solaré captures your imagination with a postcard-perfect lifestyle, instantly teleporting you to the Italian Riviera's timeless charm.



*At the Center of Everything
that Matters*



Location

3 Hours from Cairo

30 MINS ALMAZA

2 Hours from Alexandria

20 MIN EI DABAA

40 Minutes from Sidi Abdel Rahman

35 MINS SIDI ABD ELRAHMAN

Solaré Masterplan

Sports Area

Luxury Apartments

Commercial Area

East Cluster

Lumera
WATER CHALETS

Central Lagoons

Cielo
TOWNHOUSES

Ciano
LAGOON VILLAS

Sea-Front Zone

State Of the Art Facilities



Sports Area

Retail Area

Beach

Boutique Hotel

Clubhouse

Boutique Hotel

Club house

A Bespoke Clubhouse

Direct Access From The Main Boulevard

In The Heart Of The Project

Directly On +60,000 M² SWIMMABLE LAGOON



1. Actual spaces areas may vary from the stated area in the masterplan. 2. Drawings are not to scale. 3. The developer reserves the right to make technical revisions, without notices. 4. Each garden or plot shape may vary based on the location of the unit in the masterplan.

Capturing Tranquil Vibes

Lagoon Beach

3,000 M² Sandy Beach At The
Heart Of The Project



1. Actual spaces areas may vary from the stated area in the masterplan. 2. Drawings are not to scale. 3. The developer reserves the right to make technical revisions, without notices. 4. Each garden or plot shape may vary based on the location of the unit in the masterplan.

Where natural beauty follows you everywhere

Italian Inspired Commercial Area

- High-end Retail Shops
- Posh Dining Outlets
- Narrow Organic Alleys
- Open water views



Of Italian Inspired Discovery

Boutique Hotels

LOCATED IN :

Commercial Area

&

Ciano
LAGOON VILLAS



Design-Led Hospitality

Sports Facilities

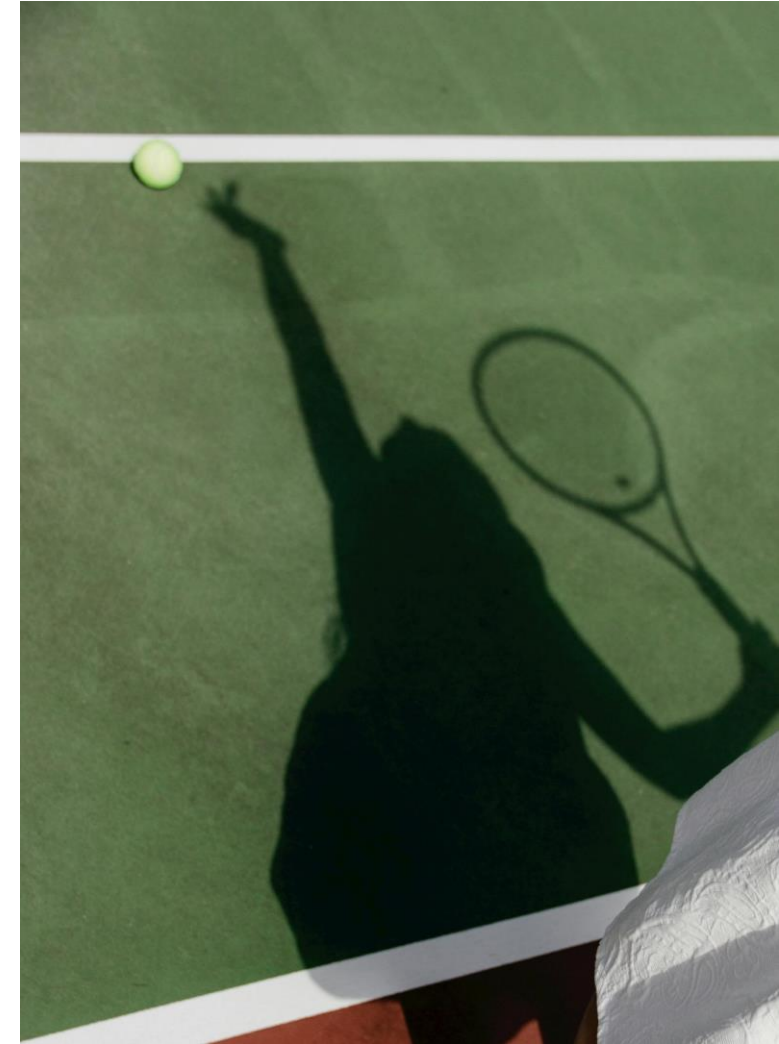
Tennis Court

Football Court

Padel Court

Multi-purpose Court

F&B Vendors





Ciano

LAGOON VILLAS

Cielo

TOWNHOUSES

Lumera

WATER CHALETS



Ciano

LAGOON VILLAS

Imagine an exclusive address where your home gracefully clings on to sandy lagoon beaches at your backyard



500 METERS AWAY FROM THE BEACH



30,000M2 SWIMMABLE LAGOONS



DIRECT ACCESS TO SWIMMABLE LAGOONS



KAYAKING AND NON-MOTOR BOATS



Cielo

TOWNHOUSES

Cielo is the place to soak in the warm Mediterranean sun and the perfect setting for dipping in natural waters to rejuvenate or simply lounging by the poolside.



MULTIPLE POOL EXPERIENCES



COZY AND INTERESTING LANDSCAPE



ORGANIC WATER FEATURES



WATER VIEWS TO THE MAJORITY OF UNITS



Lumera

WATER CHALETS

The perfect hub where our residents can gather magnifying the Italian concept of togetherness and close relationships.



MULTIPLE POOL EXPERIENCES



COZY AND INTERESTING LANDSCAPE



ORGANIC WATER FEATURES



WATER VIEWS TO THE MAJORITY OF UNITS

Launching Now
A Sea-Front Luxury Living





Amalfi

S E A V I E W

Amalfi

S E A V I E W

Wake up to panoramic sea views from your *Luxurious Villa* shimmering in the vast horizon to signal the beginning of a new day. Life here transcends the ordinary with an innovative leveling technique that elevates a higher standard of luxury where your home is truly an natural extension of Ras El Hekma's immersive beauty.



Infinite sea views

Sea-Front Zone

Amalfi

SEA VIEW





Amalfi

S E A V I E W

*Experience living at the front
Row*

Premium Location

Amalfi

S E A V I E W

Solaré
R A S E L - H E K M A

1. This façade is subjected to minor amendments without prior notice. 2. Specification, materials and/or colors might be changed based on the final design and material availability, actual unit finishings for front windows, porches, terraces, loggia and exterior trim may vary by elevation styles and floor level. 3. This façade is for illustrative purposes. 4. Pools & Car parking canopies are not included.

MISR ITALIA
PROPERTIES

Horizon Views

Amalfi

SEA VIEW



Solaré
RAS EL-HEKMA

1. This façade is subjected to minor amendments without prior notice. 2. Specification, materials and/or colors might be changed based on the final design and material availability, actual unit finishings for front windows, porches, terraces, loggia and exterior trim may vary by elevation styles and floor level. 3. This façade is for illustrative purposes. 4. Pools & Car parking canopies are not included.

MISR ITALIA
PROPERTIES

Levels Allowing Views & Privacy

Amalfi

S E A V I E W



Solaré
R A S E L - H E K M A

1. This façade is subjected to minor amendments without prior notice. 2. Specification, materials and/or colors might be changed based on the final design and material availability, actual unit finishings for front windows, porches, terraces, loggia and exterior trim may vary by elevation styles and floor level. 3. This façade is for illustrative purposes. 4. Pools & Car parking canopies are not included.

MISR ITALIA
P R O P E R T I E S

Spacious Roof Experience

Amalfi

S E A V I E W



Solaré
R A S E L - H E K M A

1. This façade is subjected to minor amendments without prior notice. 2. Specification, materials and/or colors might be changed based on the final design and material availability, actual unit finishings for front windows, porches, terraces, loggia and exterior trim may vary by elevation styles and floor level. 3. This façade is for illustrative purposes. 4. Pools & Car parking canopies are not included.

MISR ITALIA
P R O P E R T I E S

Luxurious Outdoors

Amalfi

SEA VIEW



Solaré
RAS EL-HEKMA

1. This façade is subjected to minor amendments without prior notice. 2. Specification, materials and/or colors might be changed based on the final design and material availability, actual unit finishings for front windows, porches, terraces, loggia and exterior trim may vary by elevation styles and floor level. 3. This façade is for illustrative purposes. 4. Pools & Car parking canopies are not included.

MISR ITALIA
PROPERTIES

Spacious Interiors

Amalfi

S E A V I E W



Solaré
R A S E L - H E K M A

1. This façade is subjected to minor amendments without prior notice. 2. Specification, materials and/or colors might be changed based on the final design and material availability, actual unit finishings for front windows, porches, terraces, loggia and exterior trim may vary by elevation styles and floor level. 3. This façade is for illustrative purposes. 4. Pools & Car parking canopies are not included.

MISR ITALIA
P R O P E R T I E S

Nature Integrated Interiors

Amalfi

S E A V I E W

Solaré
R A S E L - H E K M A

1. This façade is subjected to minor amendments without prior notice. 2. Specification, materials and/or colors might be changed based on the final design and material availability, actual unit finishings for front windows, porches, terraces, loggia and exterior trim may vary by elevation styles and floor level. 3. This façade is for illustrative purposes. 4. Pools & Car parking canopies are not included.

MISR ITALIA
PROPERTIES

Spacious Interiors

Amalfi

S E A V I E W



Solaré
R A S E L - H E K M A

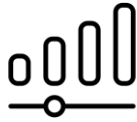
1. This façade is subjected to minor amendments without prior notice. 2. Specification, materials and/or colors might be changed based on the final design and material availability, actual unit finishings for front windows, porches, terraces, loggia and exterior trim may vary by elevation styles and floor level. 3. This façade is for illustrative purposes. 4. Pools & Car parking canopies are not included.

M MISR ITALIA
P R O P E R T I E S

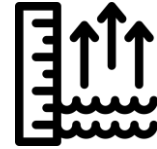


Solaré

R A S E L - H E K M A



7 Levels with direct sea-view



Elevating 30m above Sea Level



200 Meters Beach Depth



Water Views to 80% of the units



Direct Water Access to 60% of the units



Diverse Unit Types



Over 100,000 Sqm Swimmable Lagoons



Private Lagoons Villas



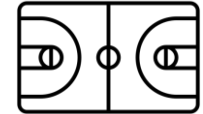
2 International Boutique Hotels



Clubhouse with Artificial Beach



Italian Inspired Commercial Area



World-Class Sports Area



Km 199

386 Acres

Spanning an area of



1 KM Sandy Beach



International Serviced Residences

*Masterfully Planned With Every
Detail In Mind*



Solare
RASHEL-HEKMA

1. Actual spaces areas may vary from the stated area in the masterplan. 2. Drawings are not to scale. 3. The developer reserves the right to make technical revisions, without notices. 4. Each garden or plot shape may vary based on the location of the unit in the masterplan.



Our Partners



Solaré
RAS EL HEKMA

1. This website is subjected to minor amendments without prior notice. 2. Specification, materials and/or colors might be changed based on the final design and material availability, actual unit finishings for front windows, porches, terraces, loggia and exterior trim may vary by elevation styles and floor level. 3. This façade is for illustrative purposes. 4. Pools & Car parking canopies are not included.



Solare Masterplan



LEGEND

- | | |
|------------------|-----------------------|
| ① MAIN GATE | ⑦ PUBLIC LAGOON BEACH |
| ② SECONDARY GATE | ⑧ SPORTS AREA |
| ③ RETAIL VILLAGE | ⑨ BEACH CLUB |
| ④ RETAIL HOTEL | ⑩ BEACH SPORTS AREA |
| ⑤ BEACH HOTEL | ⑪ BEACH PORTAL |
| ⑥ CLUBHOUSE | |

1. Actual spaces areas may vary from the stated area in the masterplan. 2. Drawings are not to scale. 3. The developer reserves the right to make technical revisions, without notices. 4. Each garden or plot shape may vary based on the location of the unit in the masterplan.

Solare Masterplan



Amalfi SEA VIEW

LEGEND

- | | |
|------------------|-----------------------|
| ① MAIN GATE | ⑦ PUBLIC LAGOON BEACH |
| ② SECONDARY GATE | ⑧ SPORTS AREA |
| ③ RETAIL VILLAGE | ⑨ BEACH CLUB |
| ④ RETAIL HOTEL | ⑩ BEACH SPORTS AREA |
| ⑤ BEACH HOTEL | ⑪ BEACH PORTAL |
| ⑥ CLUBHOUSE | |

1. Actual spaces areas may vary from the stated area in the masterplan. 2. Drawings are not to scale. 3. The developer reserves the right to make technical revisions, without notices. 4. Each garden or plot shape may vary based on the location of the unit in the masterplan.

Sea-Front Zone

Amalfi

SEA VIEW





1. Actual spaces areas may vary from the stated area in the masterplan. 2. Drawings are not to scale. 3. The developer reserves the right to make technical revisions, without notices. 4. Each garden or plot shape may vary based on the location of the unit in the masterplan.

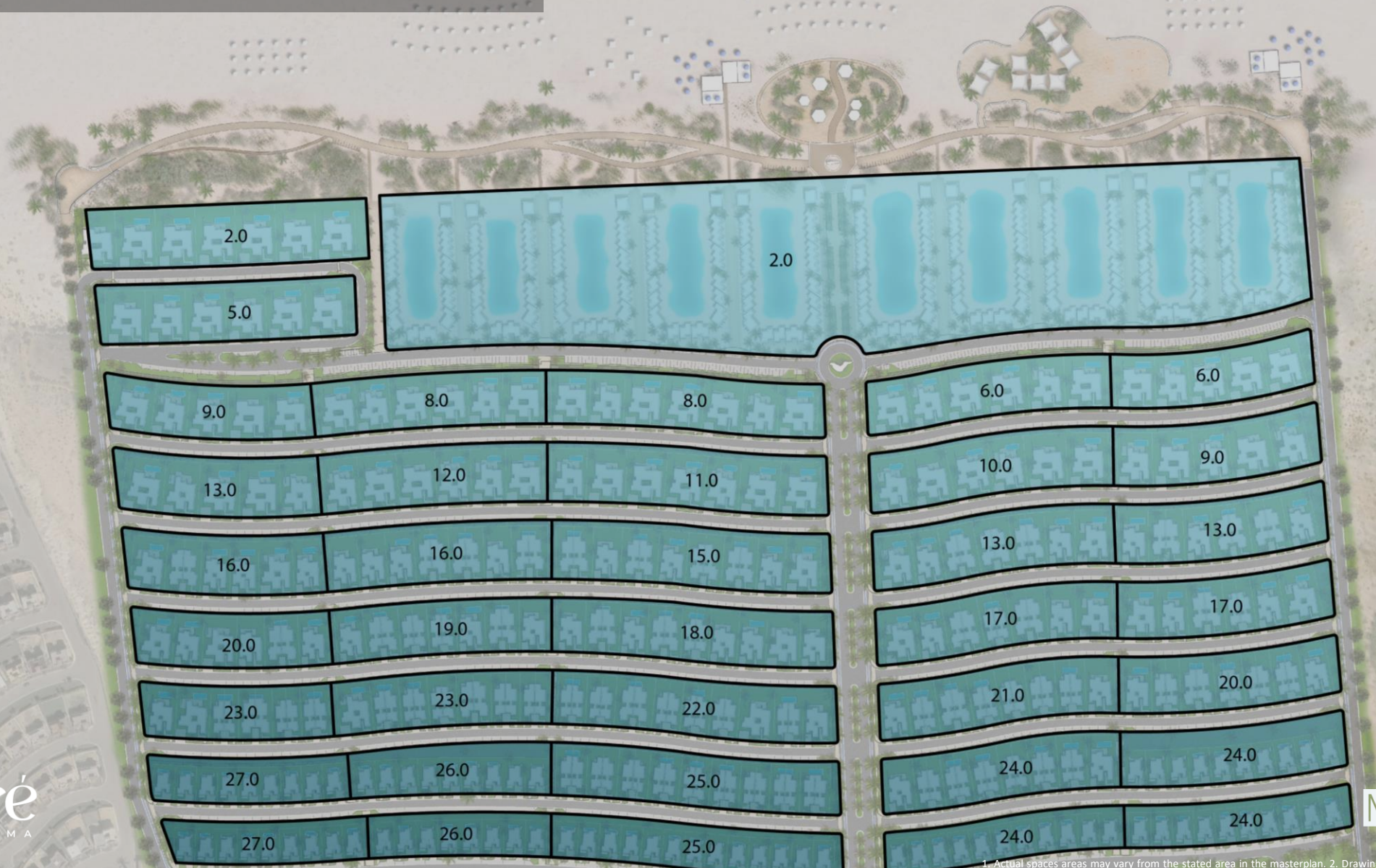
This is the place to rise with your ambitions 31 meters high above sea level to admire expert planning that breaks down the project's magnitude on 7 breathtaking levels; all promising limitless sea views, that are also only 200 meters away from the 1KM extended beach escape.



1. Actual spaces areas may vary from the stated area in the masterplan. 2. Drawings are not to scale. 3. The developer reserves the right to make technical revisions, without notices. 4. Each garden or plot shape may vary based on the location of the unit in the masterplan.

Masterplan Levels

Amalfi
SEA VIEW



Solaré
RAS EL-HEKMA

MISR ITALIA
PROPERTIES

1. Actual spaces areas may vary from the stated area in the masterplan. 2. Drawings are not to scale. 3. The developer reserves the right to

Amalfi

S E A V I E W

Two exclusive Collections of *Luxurious villas*
tailored to give the best sea-view experience

The 'Sunset Collection'.

The 'Private Collection'.



Amalfi

S E A V I E W

Two exclusive Collections of *Luxurious villas* tailored to give the best sea-view experience

The 'Sunset Collection':

- Rows 1-5
- Direct view for Sunset
- No Interrupted Views
- 100% Sea-views
- One-Storey Villas



Amalfi

S E A V I E W

Three exclusive Collections of *Luxurious villas* tailored to give the best sea-view experience

The 'Private Collection':

- Rows 6 & 7
- 100% full Sea-views & longest view of the sea
- Perfect for hosting sunset dinners.
- Highest point of the Project
- One & Two-Storey villas
- Penthouse & Roof Terrace



Amalfi

S E A V I E W

One-Storey Collection
Sea-Front Mansions
The Signature Villas

Two-Storey Collection
The Horizon Villas

Amalfi

S E A V I E W

One-Storey Collection Sea-Front Mansions & The Signature Villas



Sunlit Inner Court



Water Views From Every Corner



Wake Up With Sea Views Right At Your Window



1. All materials, s
2. Finishing and f



ation, colors and furniture are tentative, and subjected to changes and alteration without notice depending on availability of specified materials, specific
are according to the specs in Contract Appendix. The above is only for illustrative purposes



nd/or colors.

Luxurious Bathroom Finishing

Amalfi

S E A V I E W

Sea-Front Mansions

One-Storey Collection

Sea-Front Mansions

One-Storey Collection

- 6 Bedroom Villa (6B)
- 5 Bedroom Villa (5B)
- 4 Bedroom Villa (4B)



6 Bedroom Sea-Front Mansion

Front



6 Bedroom Sea-Front Mansion

Back



6 Bedroom Sea-Front Mansion

One-Storey Collection

Total Gross Area: 385 m²

Internal Area: 343 m²

Terraces Area: 42 m²

6 Bedrooms En-suite (5 Bedrooms Full Sea-view)

Sun-lit Inner Court

Open + Closed Kitchen

One Guest Toilet + Powder room

Maid's Room En-suite

Driver's Room En-suite



5 Bedroom Sea-Front Mansion

Front



5 Bedroom Sea-Front Mansion

Back



5 Bedroom Sea-Front Mansion

One-Storey Collection

Total Gross Area: 339 m²

Internal Area: 294 m²

Terraces Area: 45 m²

5 Bedrooms En-suite (4 Bedrooms Full Sea-view)

Sun-lit Inner Court

Open + Closed Kitchen

One Guest Toilet + Powder room

Maid's Room En-suite

Driver's Room En-suite



4 Bedroom Sea-Front Mansion

Front



4 Bedroom Sea-Front Mansion

Back



4 Bedroom Sea-Front Mansion

One-Storey Collection

Total Gross Area: 279 m²

Internal Area: 250 m²

Terraces Area: 29 m²

4 Bedrooms En-suite (3 Bedrooms Full Sea-view)

Sun-lit Inner Court

Open + Closed Kitchen

One Guest Toilet + Powder room

Maid's Room En-suite

Driver's Room En-suite



Amalfi

S E A V I E W

The Signature Villas

One-Storey Collection

The Signature Villas

One-Storey Collection

4 Bedroom Twin-House (4W)
3 Bedroom Twin-House (3W)



4 Bedroom Signature Villa

One-Storey Collection – Twin-House

Total Gross Area: 201 m²

Internal Area: 186 m²

Terraces Area: 15 m²

4 Bedrooms En-suite (2 Bedrooms Full Sea-view)

Sun-lit Inner Court

Open + Closed Kitchen

One Guest Toilet + Powder room

Maid's Room En-suite



A

B

3 Bedroom Signature Villa

One-Storey Collection – Twin-House

Total Gross Area: 160 m²

Internal Area: 149 m²

Terraces Area: 11 m²

3 Bedrooms En-suite (1 Bedroom Full Sea-view)

Sun-lit Inner Court

Open + Closed Kitchen

One Guest Toilet + Powder room

Maid's Room En-suite



A

B

Amalfi

S E A V I E W

The Horizon Villas

Two-Storey Collection

The Horizon Villas

Two-Storey Collection

4 Bedroom Villa (4D)

4 Bedroom + Penthouse Villa (4E)



Where elevated views meet unforgettable experiences at your door.



Contemporary Luxurious Living Spaces



Social Living Away From Your Private Comfort



Resort Like Views From The Comfort Of Your Bed

4 Bedroom Horizon Villa

Front



1. This façade is subjected to minor amendments without prior notice. 2. Specification, materials and/or colors might be changed based on the final design and material availability, actual unit finishings for front windows, porches, terraces, loggia and exterior trim may vary by elevation styles and floor level. 3. This façade is for illustrative purposes. 4. Pools & Car parking canopies are not included.

4 Bedroom Horizon Villa

Back



1. This facade is subjected to minor amendments without prior notice. 2. Specification, materials and/or colors might be changed based on the final design and material availability, actual unit finishings for front windows, porches, terraces, loggia and exterior trim may vary by elevation styles and floor level. 3. This facade is for illustrative purposes. 4. Pools & car parking canopies are not included.

4 Bedroom Horizon Villa

Two-Storey Collection

Total Gross Area: 271 m²

Internal Area: 220 m²

Terraces Area: 51 m²

4 Bedrooms En-suite (4 Bedrooms Full Sea-view)

Semi-Closed Kitchen

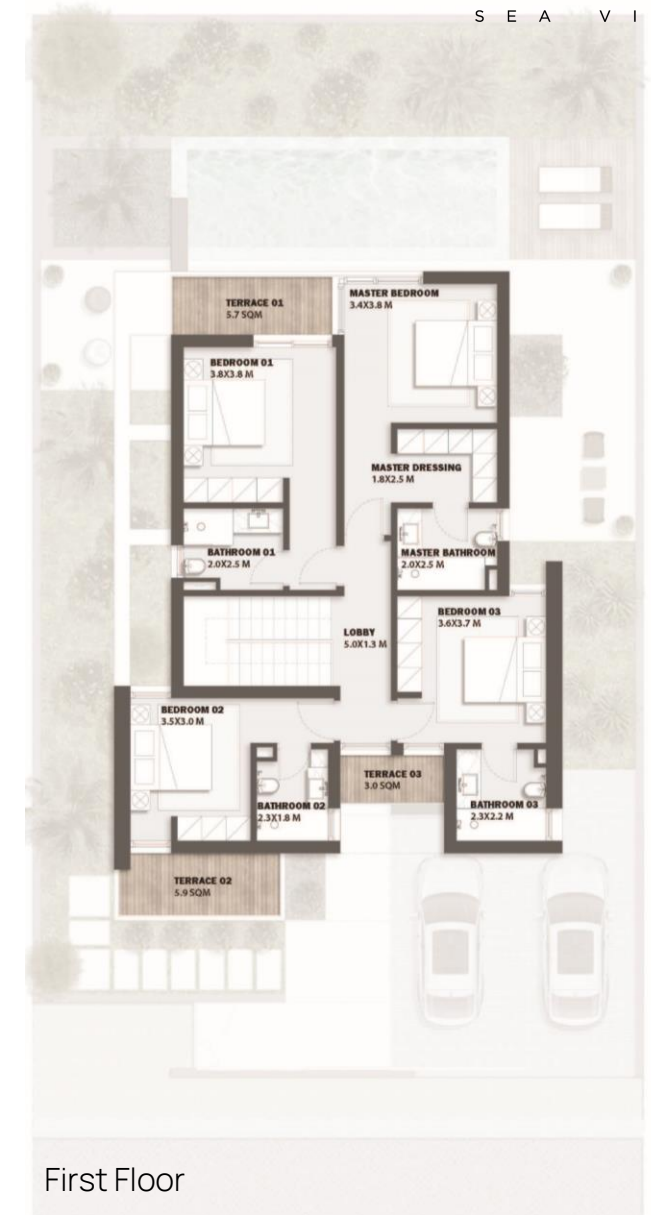
One Guest Toilet

Maid's Room En-suite

Driver's Room En-suite



Ground Floor



First Floor

4 Bedroom + Penthouse

Horizon Villa

Front



1. This façade is subjected to minor amendments without prior notice. 2. Specification, materials and/or colors might be changed based on the final design and material availability, actual unit finishings for front windows, porches, terraces, loggia and exterior trim may vary by elevation styles and floor level. 3. This façade is for illustrative purposes. 4. Pools & Car parking canopies are not included.

4 Bedroom + Penthouse Horizon Villa

Back



4 Bedroom Horizon Villa

Two-Storey Collection

Total Gross Area: 287 m²

Internal Area: 236m²

Terraces Area: 51 m²

Roof Terrace Area: 53.1 m²

4 Bedrooms En-suite (4 Bedrooms Full Sea-view)

Penthouse + Roof Terrace

Semi-Closed Kitchen

One Guest Toilet

Maid's Room En-suite

Driver's Room En-suite



Ground Floor



First Floor



Roof Floor

Masterplan Unit Locations



- UNIT CODES**
- 6B - 6 Bedroom Villa - (1F)
 - 5B - 5 Bedroom Villa - (1F)
 - 4B - 4 Bedroom Villa - (1F)
 - 3W - 3 Bedroom Twin-House - (1F)
 - 4W - 4 Bedroom Twin-House - (1F)
 - 4D - 4 Bedroom Villa - (2F)
 - 4E - 4 Bedroom Villa - (2F + Penthouse)

Amalfi

S E A V I E W

The Finishing Specs

Finishing Specs

Villas & Twin-Houses

Fully finished

All materials, specification, colors and furniture are tentative, and subjected to changes and alteration without notice depending on availability of specified materials, specification and/or colors
Finishing and furniture are according to the specs in Contract Appendix. The above is only for Illustrative Purposes





Thank You