

JADEER

G R O U P



SOLID FOUNDATIONS | SINCE 2006

A woman with long dark hair is shown in profile, looking upwards and to the right. Her right arm is raised, with her hand resting on her head. Her left hand is positioned near her neck. The background is a textured, warm brown wall. The lighting is dramatic, with strong highlights on her skin and hair, and deep shadows in the background.

**EXCEPTIONAL  
LIVING IN  
NEW CAIRO**

# GARNET®

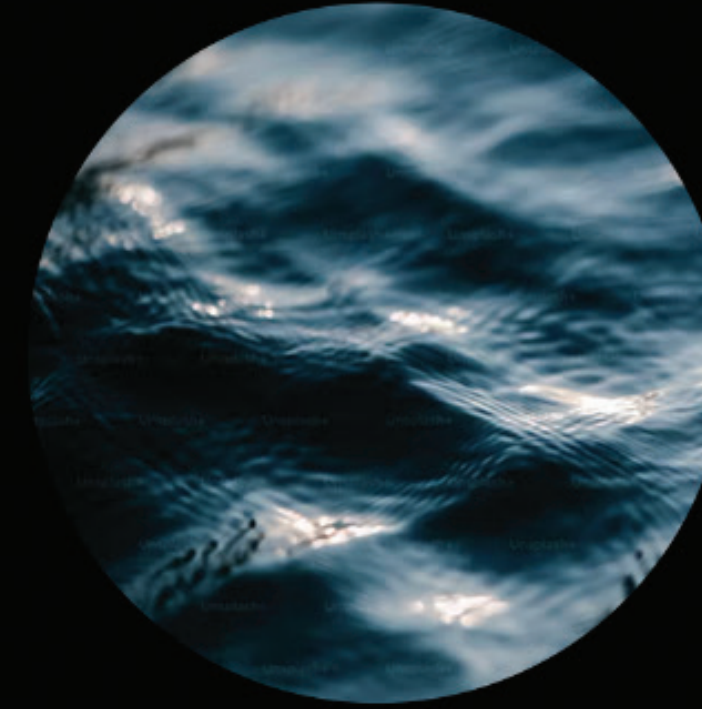
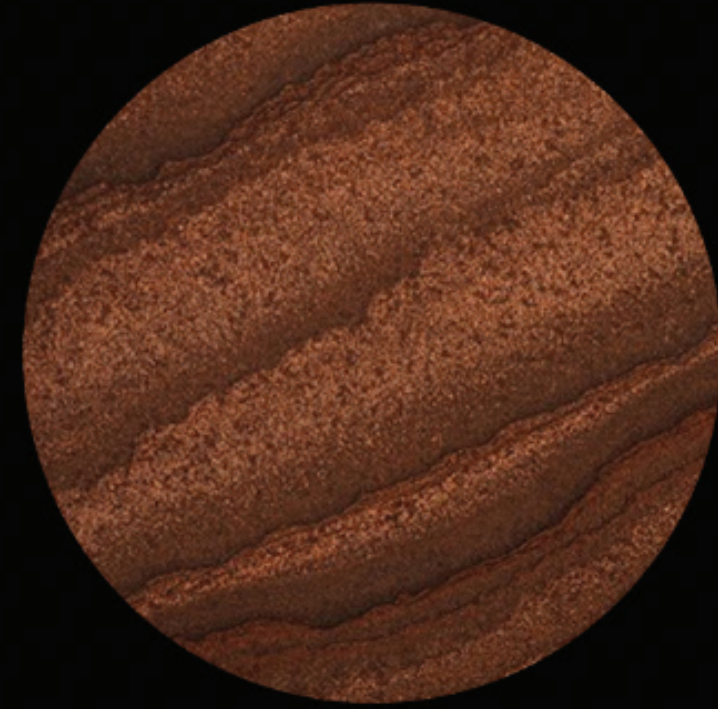
RESIDENC - NEW CAIRO

# GARNET®

**EXTRACTED FROM THE DEPTHS OF THE EARTH**

Garnet is a gemstone renowned for its rich history, captivating beauty, Gemstones are valued for their beauty, rarity, and sometimes, durability.

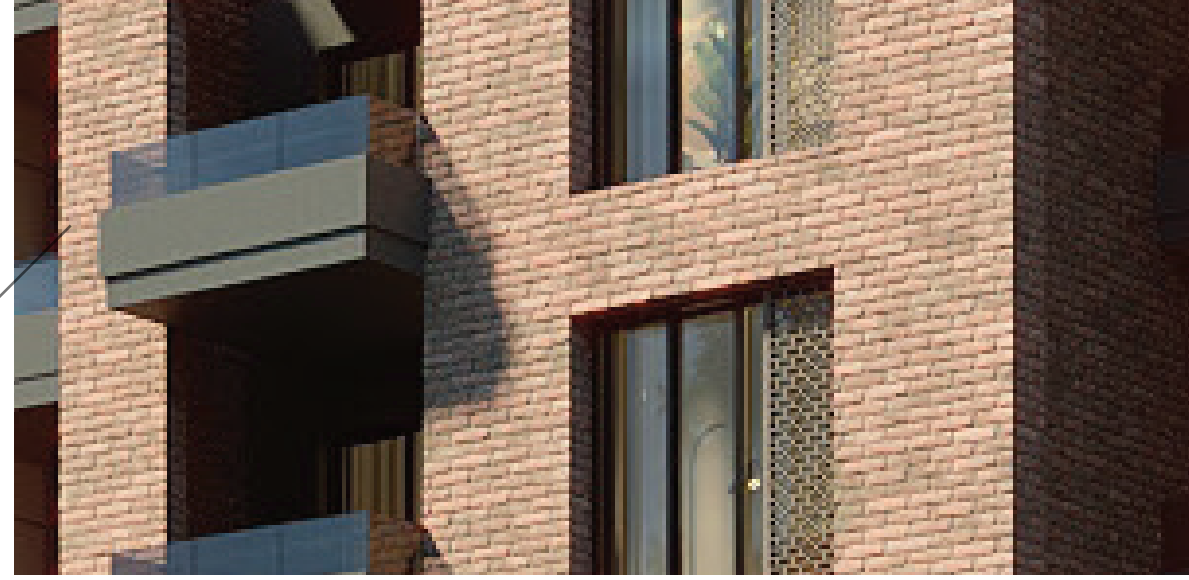
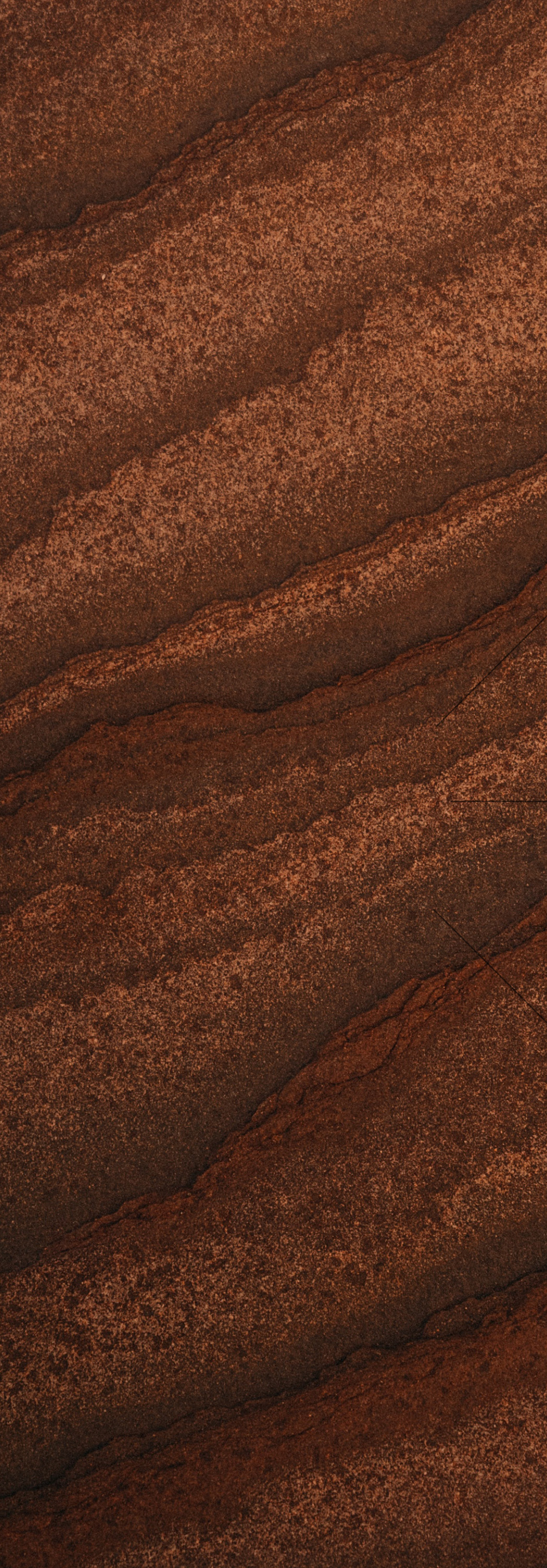
## Nature's Elements



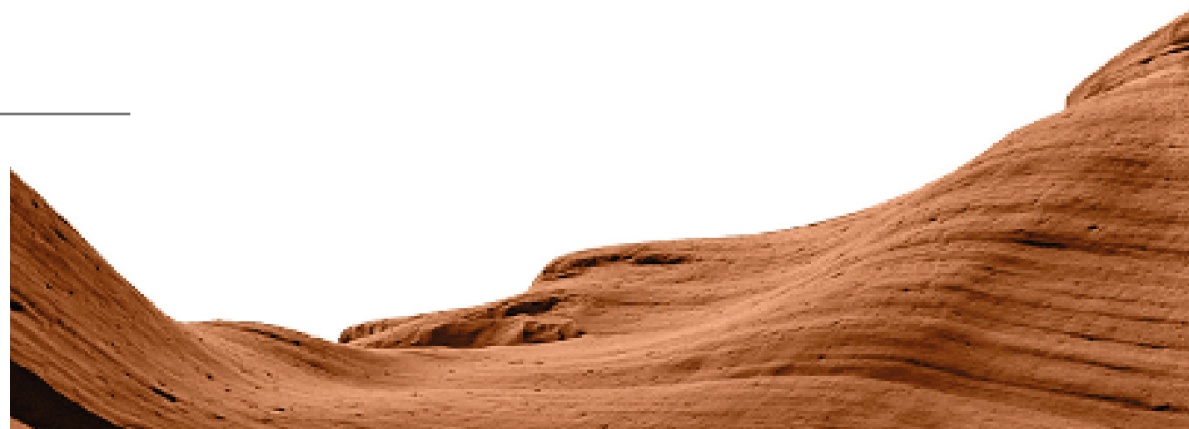
## Tagline

Where Everything Connects in a Distinctive Residential compound, Seamlessly Integrated with Nature's Elements for a Serene and Sustainable Living Experience."

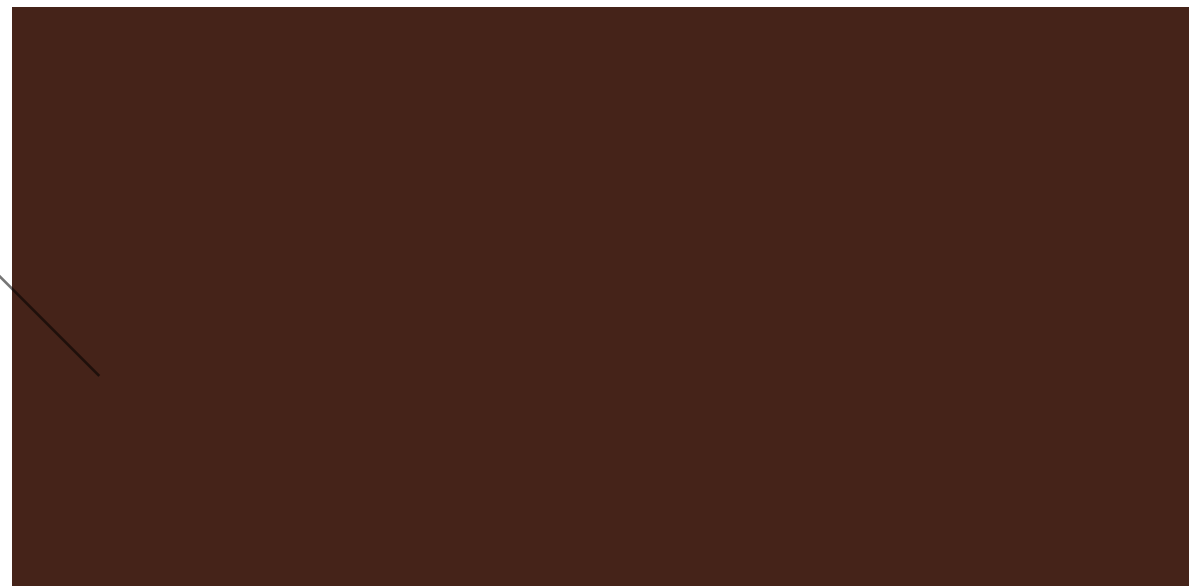
**WHERE  
EVERYTHING  
CONNECTS**



FACADE

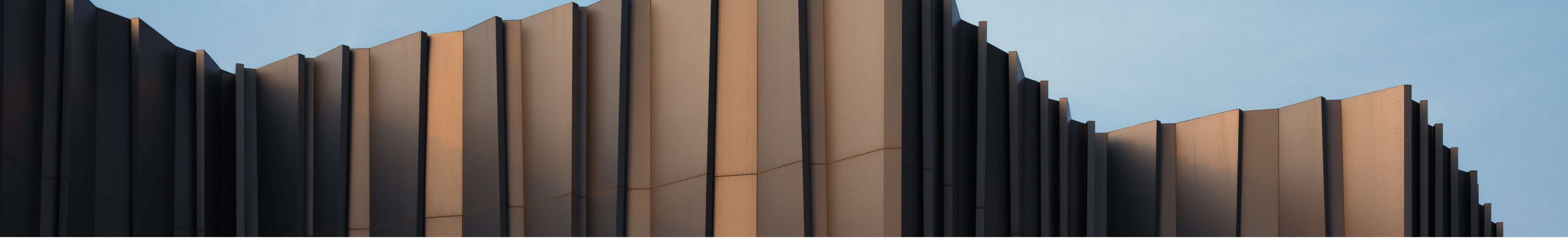


IDENTITY



EARTH

**WHERE  
EVERYTHING  
CONNECTS**



Mimar is one of the largest architectural engineering companies in Egypt and the Arab world, earning the trust of several countries such as Qatar, Saudi Arabia, the United Arab Emirates, Libya, and Iraq. This is the main reason behind our choice of them to provide the best experience in the field.

Mimar architecture boasts over 24 years of experience in delivering consulting services for more than 900 projects in the core specialties of architectural engineering, including master planning, structure, and site supervision.



**START**

**AREAS**

**79M**

1 BEDROOM - 2 BEDROOMS - 3 BEDROOMS - 4 BEDROOMS - DUPLEX

**START**

**PRICES \$50** <sup>SQM</sup>**K**

**UP TO 8** YEARS

**FULLY FINISHED  
FREE CLUB HOUSE  
MEMBERSHIP DURING  
LAUNCH PERIOD.**

# FACT SHEET

<b>1 BEDROOM</b>	<b>4,240,000M</b>
<b>2 BEDROOM</b>	<b>6,477,000M</b>
<b>3 BEDROOM</b>	<b>8,370,000M</b>
<b>4 BEDROOM</b>	<b>12,155,000M</b>

---

- DELIVERY 3 YEARS
- PROJECT AREA 14 ACRES
- PAYMENT UP TO 8 YEARS
- EOI FEES: 50K ONLY CHEQUE, TRANSFER OR CASH REFUNDABLE
- CLUB INCLUDED ( LAUNCH PERIOD )
- 2 BASEMENTS
- BUILDING HEIGHTS: +G6
- PRIME LOCATION
- SECURITY SMART GATES - WATER FEATURE - CLUB HOUSE
- STRIP MALL WHICH SERVE THE COMPOUND WITH ADMIN MEDICAL AND COMMERCIAL

JADEER  
GROUP