

EVAN  
TOWERS

SALES KIT



Embark on a journey with **Contact Developments**, an innovative leader in the real estate industry in Egypt, with a remarkable **14-year** track record. We take immense pride in our unwavering dedication to pushing the boundaries of real estate development. Our expertise, built upon deep industry knowledge, rigorous research, and strategic partnerships, enables us to craft extraordinary mixed-use towers and commercial malls in the **New Administrative Capital of Egypt**. These cutting-edge projects cater to the evolving needs of modern businesses and discerning consumers.

At **Contact Developments**, we are driven by an unyielding commitment to delivering unparalleled results to our esteemed clients.





**CONTACT**  
DEVELOPMENTS

**CONTACT EXPERTISE IN NEW  
ADMINISTRATIVE CAPITAL**



# Mercury Business Complex:

in the thriving Downtown area and in the most promising district.





# Quan Tower:

At Central Business District (CBD) R3 District.





## Cayo Mall:

In one of the main attractions in the Downtown shopping area.

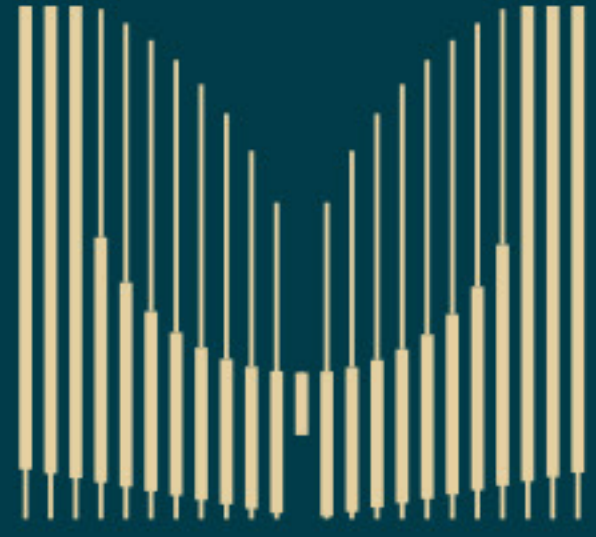




Our relentless pursuit of groundbreaking solutions ensures that we remain at the forefront of real estate development in Egypt. As a result, we have cemented our position as a premier real estate developer in the country.

Discover a new era in real estate with Contact Developments. Join us as we redefine the landscape of Egypt, one iconic project at a time.

At contact developments, *We talk* **BUSINESS** .



EVAN  
TOWERS

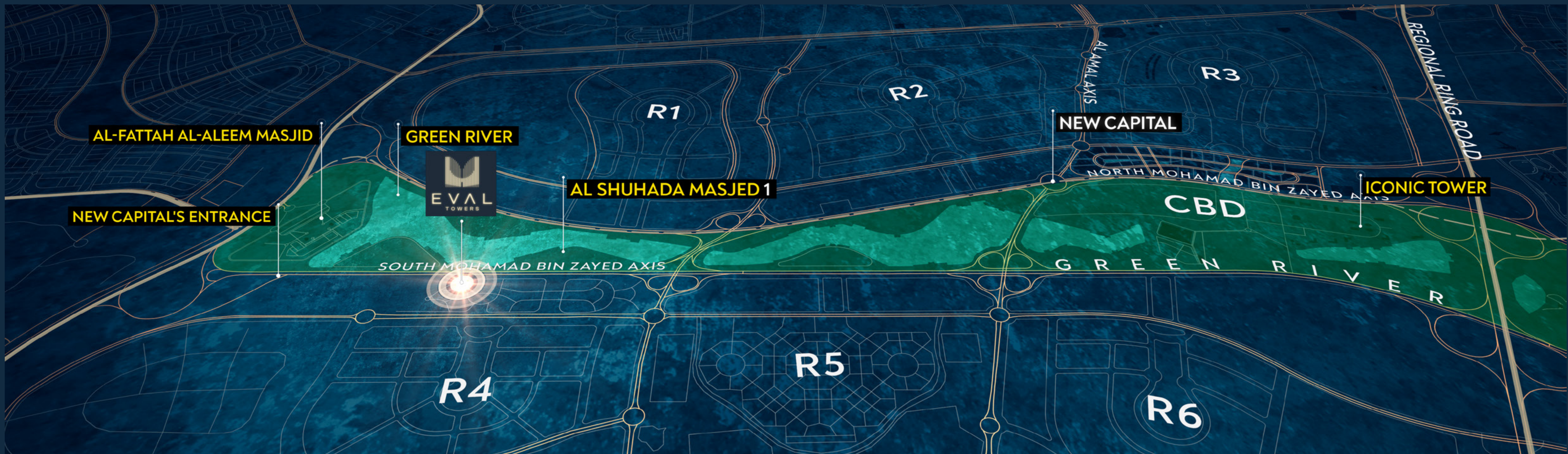
WHERE  
NO ONE  
HAS GONE



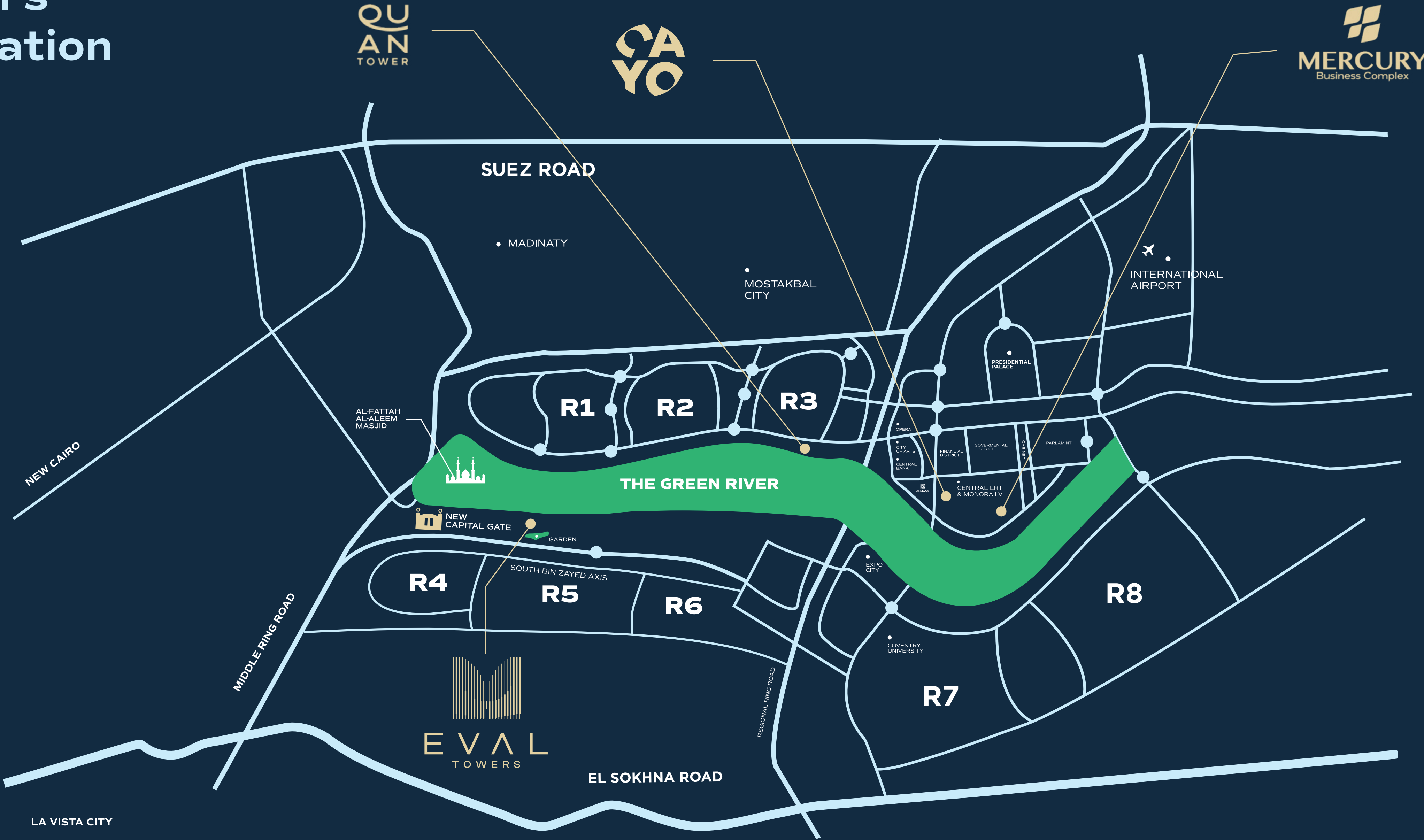


# Eval's Location

- Located directly on South Bin Zayed Axis, right next to the new capital's main gate less than 1m away.
- With a direct view over the green river.
- Being just 3 minutes to the iconic tower and Al-Fattah Al-Allam Mosque.



# Eval's Location



# Exclusively at Eval

All units have a **360-view**; overlooking over **15,000 m<sup>2</sup>** of greenery.

Introducing the concept of eternity, focusing on lifelong evaluation and improvement aiming to provide a unique experience for visitors who are seeking personal growth; accordingly, being key to professional and personal success.









**OUR  
PARTNERS**



Partnering with esteemed consultants plays a vital role in elevating the overall quality and ensuring the success of the Eval Towers project.

Each bringing their specialized knowledge and experience to their respective areas, collaborating seamlessly to create a harmonious and exceptional development by incorporating best practices, innovative design, efficient operations, structural integrity, and effective project management.



# CBRE

**THE INTERNATIONAL CBRE FOR FACILITY  
AND PROPERTY MANAGEMENT**

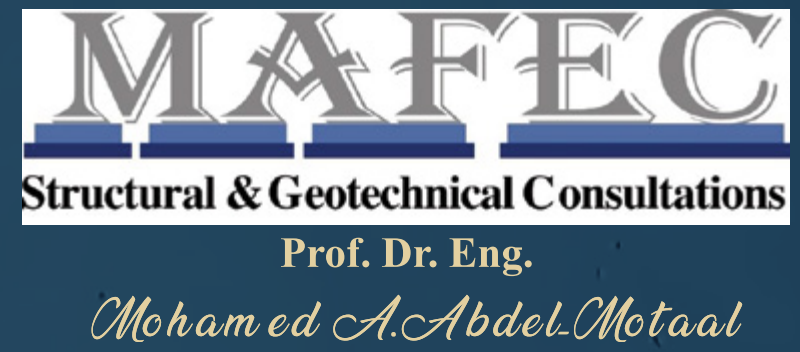


YBA

YBA FOR THE ARCHITECTURAL DESIGN



# DEWAN FOR MEP CONSULTANTS



# MAFEC FOR STRUCTURAL & GEOTECHNICAL CONSULTANCY

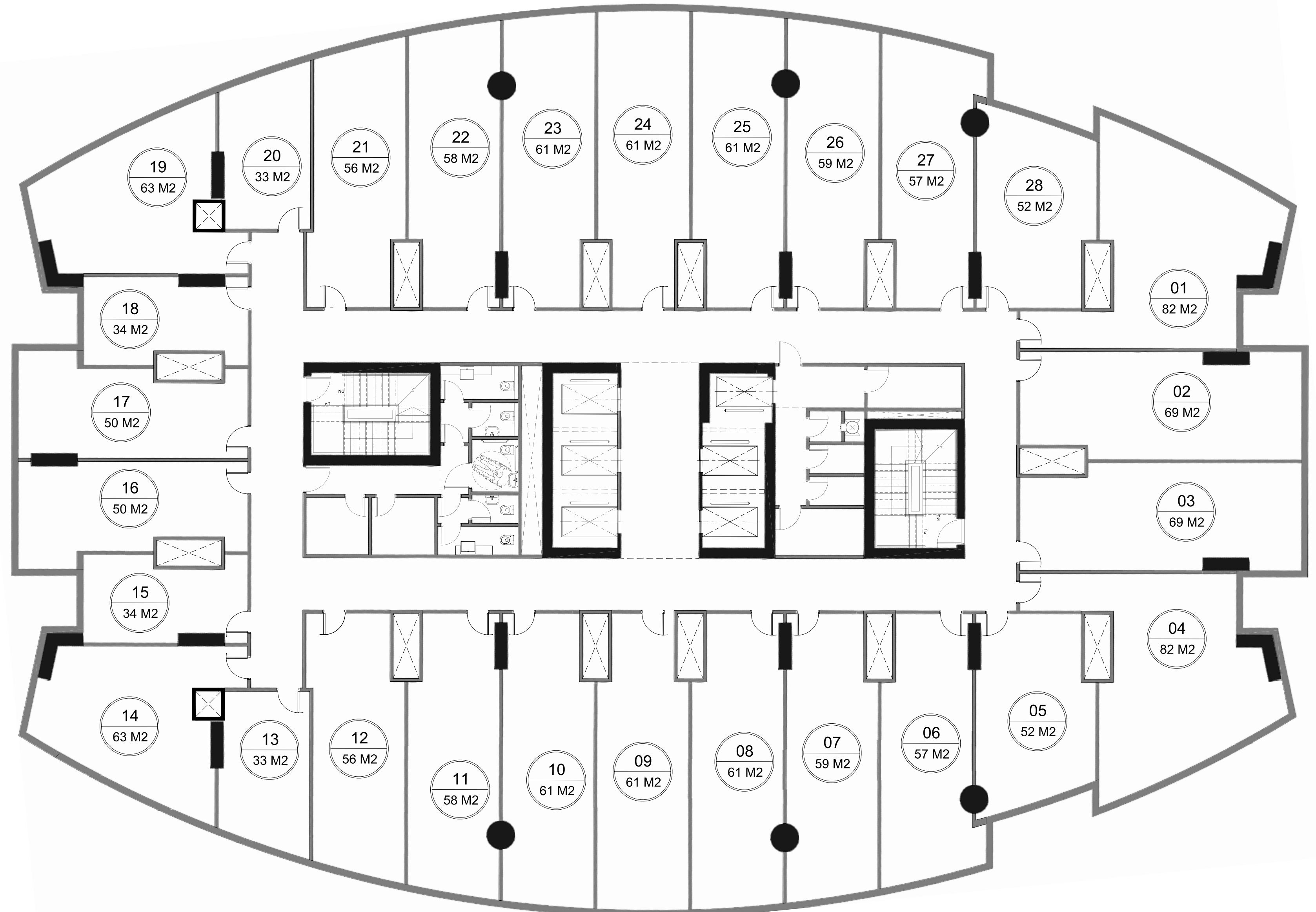


**ACE CONSULTING ENGINEERS  
MOHARRAM.BAKHOUM**

**ACE PROJECT MANAGEMENT  
- MOHARRAM BAKHOUM**

# Floor Plan

Administrative Offices  
3rd Floor to 12th Floor





 15694

[contactdevelopments.com](http://contactdevelopments.com)