

LUD LOZAN URBAN
DEVELOPMENT

Scan me..



19153

Arabella Plaza, New Cairo - Cairo, EGYPT

hello@lud.com.eg

www.lud.com.eg

APEX

New Capital

ABOUT LOZAN

Lozan Urban Development was established in 1997, where its journey was distinguished from the beginning by permanent leadership, and it continued to grow over the years to become one of the most important investment companies in the Middle East. Over the years, the company has undertaken the diagnosis of the best investment strategies until it reached its innovative business model, as it includes a group of companies in several countries in the region with large investments in various sectors to serve the needs of existing projects such as import and export companies, shipping companies, general contracting and public supplies, aluminum and timber companies, and a company specialized in landscaping. The beginning of investment and urban development was in 2007 in the United Arab Emirates till now, and Three members of our Board of Directors are working on the continuance of the path of our success and endless accomplishment of investment journey in the United Arab Emirates. where it delivered 17 compounds (villas) with integrated services that were established in the Emirate of Abu Dhabi, Mohammed bin Zayed City, and Khalifa bin Zayed City. The company also launched seven other projects that are residential communities in Khalifa City: (Al Mazrouei, Al Muraikhi, Al Jabri, Al Harmoudi, Al Khoury 2-1, Al Junaibi).

As For the local level in the field of urban development, the company's work proceeded with the construction and development of more than 15 residential, administrative and commercial towers in Mansoura, which are towers (Al-Sahm Alawal, Lozan, Delaser, Al-Massa, Al-Haramain, Juwayriyah, Al-Rehab, Al-Safa, Nile, Al-Nokhba, Al-Safwa, Al-Sahm, Al-Fayrouz and Al-Kawthar) and the company is currently working on establishing and developing four projects in the city of Al-Ula, one of the bright spots in Mansoura.

OUR PREVIOUS WORK



IN ADDITION TO DEVELOPING TWO RESIDENTIAL COMPOUNDS IN SHAKHBOUT CITY: (AL MUSABI, OSAMA) AND (AL HAMMADI) COMPOUND IN ABU DHABI.



AS WELL AS FIVE PALACES IN KHALIFA CITY: (AL MANSOURI 2-1, AL ZAABI, AL MURAIKHI AND AL MAZROUEI).



The company's business in Mohammed bin Zayed City also proceeded with the construction of three palaces (Al Mansouri 2-1) and a palace (Dr. Mazen).



Facilities and landscape management

APEX

beyond essentials..

TABLE OF CONTENTS

- 03 INVEST IN EGYPT
- 04 NEW CAPITAL OF EGYPT
- 06 DOWN TOWN DISTRICT
- 08 LOZAN URBAN DEVELOPMENT
- 11 APEX BUSINESS COMPLEX
- 13 LOCATION AND LAND MARKS
- 15 APEX DESIGN CONCEPT
- 17 FACILITIES AND FEATURES
- 19 FLOOR PLAN

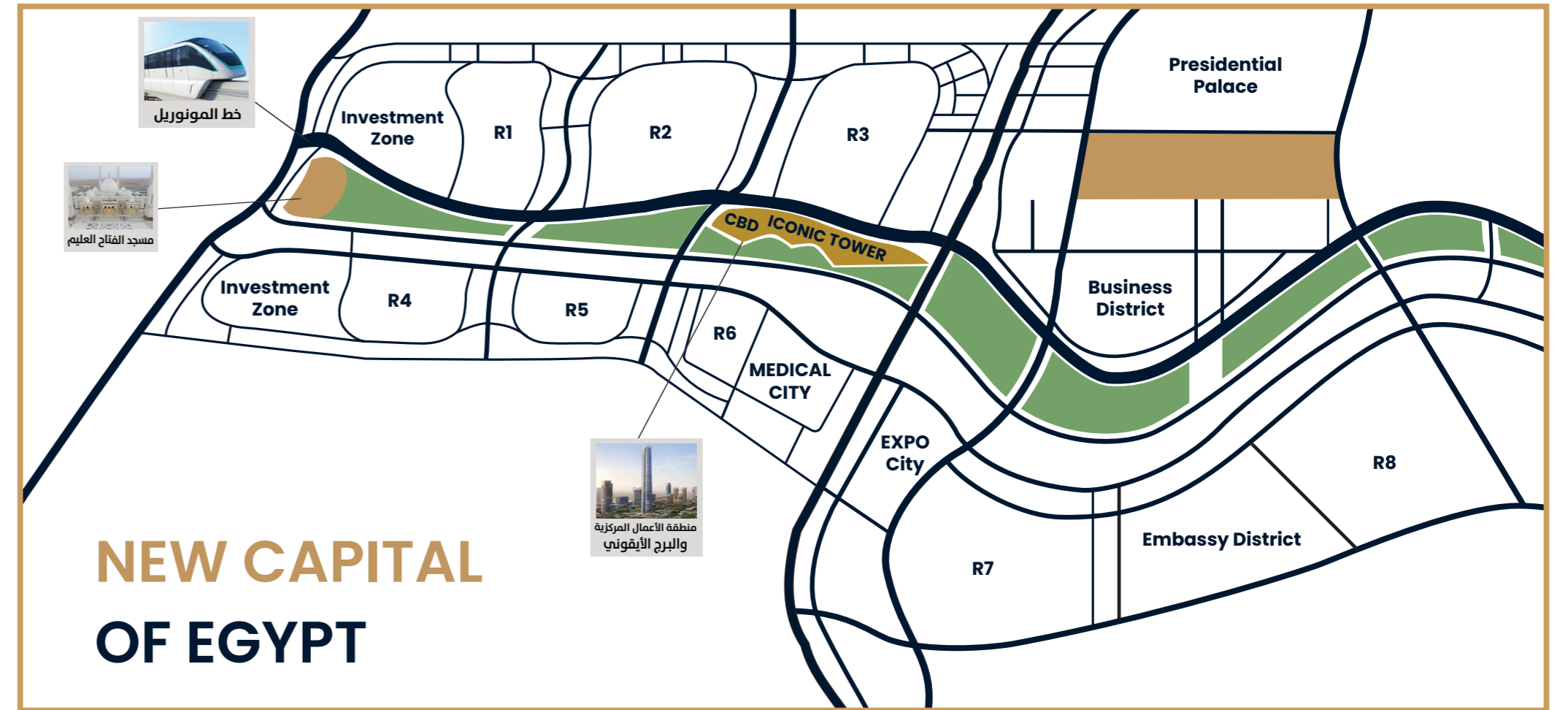


EGYPT.

EGYPT AMONG WORLD'S 10 FASTEST GROWING ECONOMICS

According to a recent Harvard report, Egypt has ranked as the world's third fastest growing economy in the coming decade after India and Uganda. The Center for International Development (CID) at Harvard University released a Global Growth Projections report, and it expects Egypt's annual economic growth to reach 6.63 % by 2026.

The growth projections are based on Economic Complexity, a single measure of each country's economy which captures the diversity and sophistication of the productive capabilities embedded in a country's exports



The New Administrative Capital is a large-scale project of a new capital city in Egypt that has been under construction since 2015. It was announced by the then Egyptian housing minister Mostafa Madbouly at the Egypt Economic Development Conference on 13 March 2015. The capital city is considered one of the programs and projects for economic development, and is part of a larger initiative called Egypt 2030.

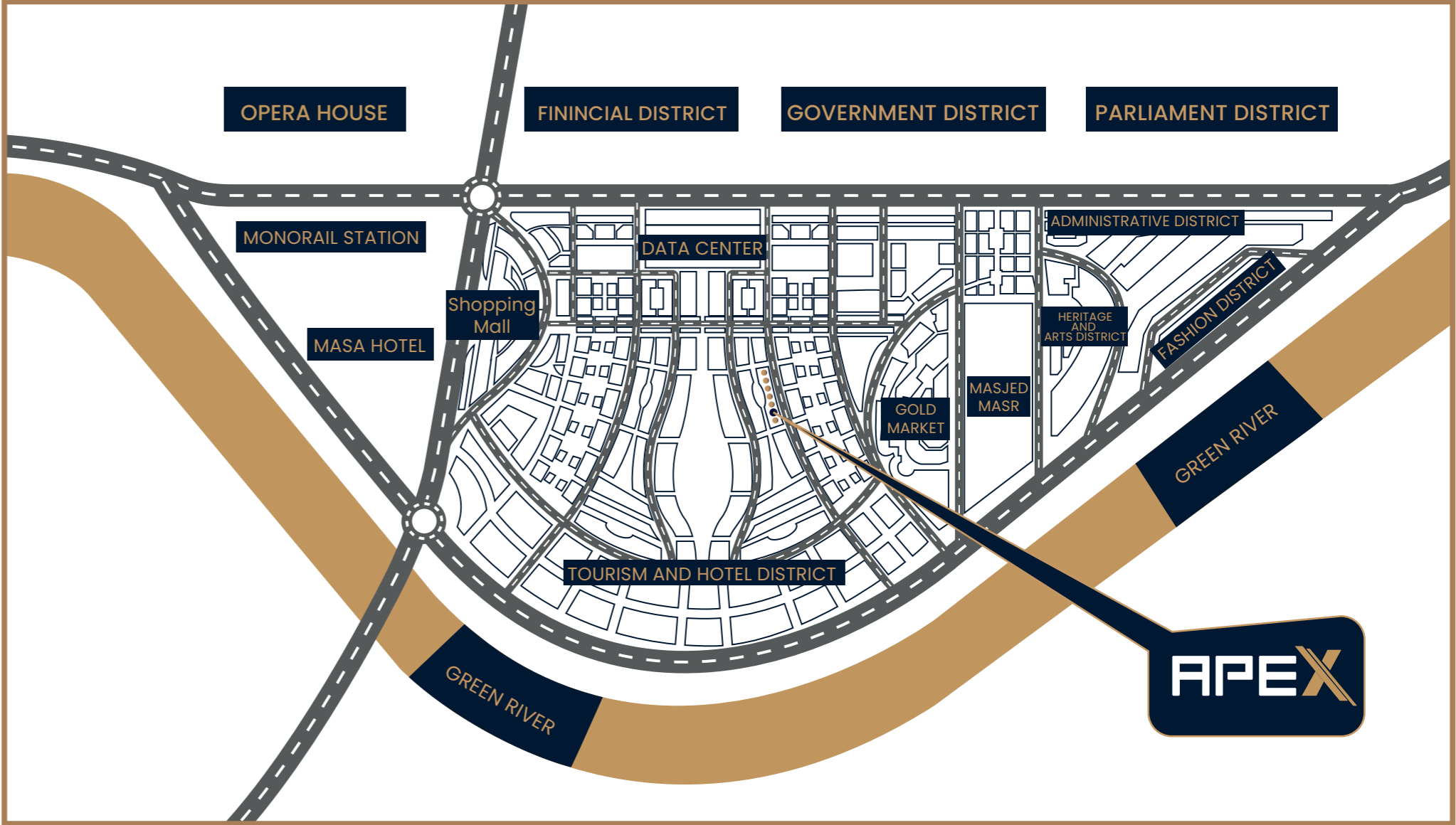
According to the plans, the city will become the new administrative and financial capital of Egypt, housing the main government departments and ministries and foreign embassies.

On 700 square kilometres (270 sq mi) total area, it would have a population of 6.5 million people, though it is estimated that the figure could rise to seven million.

NEW CAPITAL'S DOWN TOWN

Downtown "MU19" is a huge investment area with an 1364 acres and divided into 5 neighborhoods. Downtown will include shopping centers and major commercial activities in various fields in the heart of the New Capital. It is the center of the country in Cairo, and in a short period it will become the largest commercial area that includes various investments in the future capital.

Down Town is in a privileged location near the most important landmarks and neighborhoods, as it is adjacent to Al Masa Capital Hotel, and to its north is the Government District, the Monorail Train Station and the Opera House, and it is close to main roads such as the Bin Zayed North Axis.





LOZAN URBAN DEVELOPMENT

15 years of success

LOZAN Urban Development **LUD** is an Egyptian joint stock company with 25 years of experience in the real estate development and investment. It manages a huge portfolio in several countries in the Middle East with large investments in various sectors, including general supplying and general contracting.

LUD acquires a large volume of business to develop the real estate sector in Egypt in accordance with the vision of the Egyptian state (Egypt 2030) by establishing and developing integrated residential communities with high level amenities in (Delta and New Capital).

Business has started in (Delta) since 2009 with the establishment and development of more than 19 various projects between residential, administrative, commercial and tourism in partnership with major companies in the business sector, most of which have been delivered and work is currently underway on some of them.

LUD established its position as an entity among the fastest growing in the real estate sector and headed towards the "New Administrative Capital" in 2017 with a huge investment (Mixed-use projects) Moreover, partnership with a residential compound on an area of 50 acres in the first offering, in addition to another project at the financial and governmental district plus a commercial project in promenade & shopping district at Downtown.

As for the company's regional investments, it is considered the strongest and most diversified arm, as **LUD** is developing the real estate sector in United Arab Emirates with more than 17 compounds (Villa) in Abu Dhabi, Mohammed Bin Zayed City and Khalifa Bin Zayed A City.



Driven by quality, expanding globally.



OUR VISION

To be one of the top mega developers in the middle east by having a huge land bank reflect our experience through the coming years.



VISION & MISSION COMPANY

OUR MISSION

Deliver developed sustainable communities to our residents, In addition to choosing the best promising investment areas in line with the direction of the Egyptian vision 2030.

Apex

Business Complex

Apex business complex is an integrated business hub designed to be practical also unique looking which has the essential needs and a great work environment for a successful business.

Apex has a various types of units between Retail, office spaces and clinics each of them has his own separate entrance with all facilities and amenities.



COMMERCIAL

FLEXIBLE SPACE MODULES



OFFICE SPACES

SHARING MEETING ROOMS



CLINICS

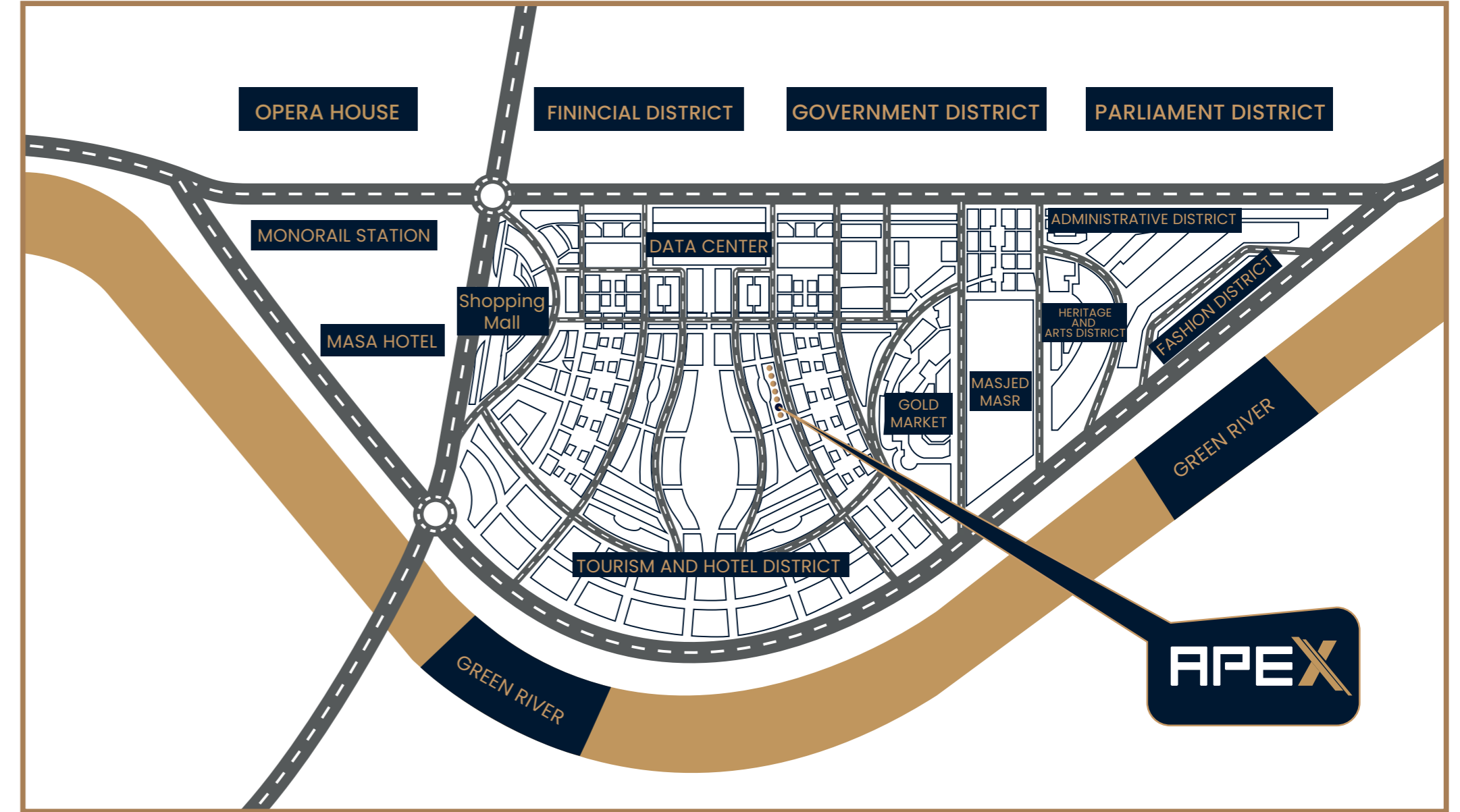
SEPERATE ENTERANCE

APEX LOCATION

Apex has a special location in down town , couple of minutes away from the governmental district ,easy to reach it from anywhere you come.

Downtown will include shopping centers and major commercial activities in various fields in the heart of the New Capital, you can say it's an integrated work environment that make you begin your successful business journey.

- 1 GOVERNMENTAL DISTRICT
- 2 MINISTRIES DISTRICT
- 3 MONORAIL STATION
- 4 AL MASA HOTEL



Apex's
*design
concept*



Integrated business hub
unique also practical



Apex design concept based on the two towers concept with a connection between them to provide a fresh air flow and a large scale of open areas, in addition to the attractive design with crystal glass for the whole building and interior lines that reflects the on exterior design.

Apex building consists of Mass of cubes that gives it a lot of empty spaces , terraces, shadows and different views from each side .Apex also has a wide range of building facilities such as a panoramic elevators , roof garden, sky lounge and much more..

APEX Facilities

Downtown will include shopping centers and major commercial activities in various fields in the heart of the New Capital, you can say it's an integrated work environment that make you begin your successful business journey.

- | | | | |
|----|----------------------------|----|-------------------------|
| 01 | Separate entrances. | 11 | Panoramic Elevators. |
| 02 | Flexible spaces modules. | 12 | Double Food Court. |
| 03 | Roof Garden. | 13 | Digital Screens. |
| 04 | Sky Lounge. | 14 | Huge service spaces. |
| 05 | Underground Parking. | 15 | Water Falls. |
| 06 | Energy saving environment. | 16 | Common waiting areas. |
| 07 | Landscape Overlooking. | 17 | Sharing meeting rooms. |
| 08 | Apex's Grand Plaza. | 18 | Open Terraces. |
| 09 | Common Services | 19 | Landscape and greenery. |
| 10 | Energy saving. | | |



APEX

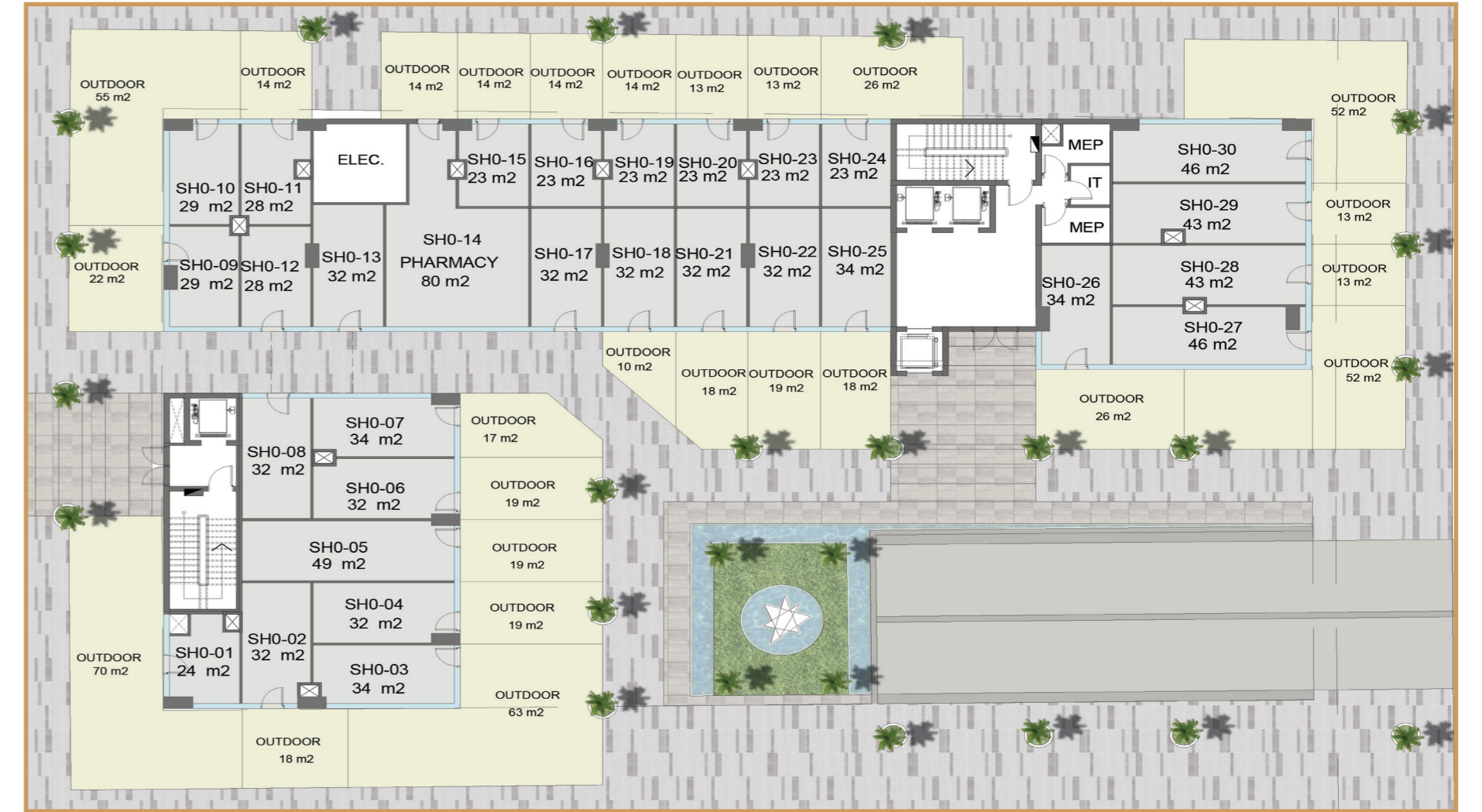
FLOOR PLAN

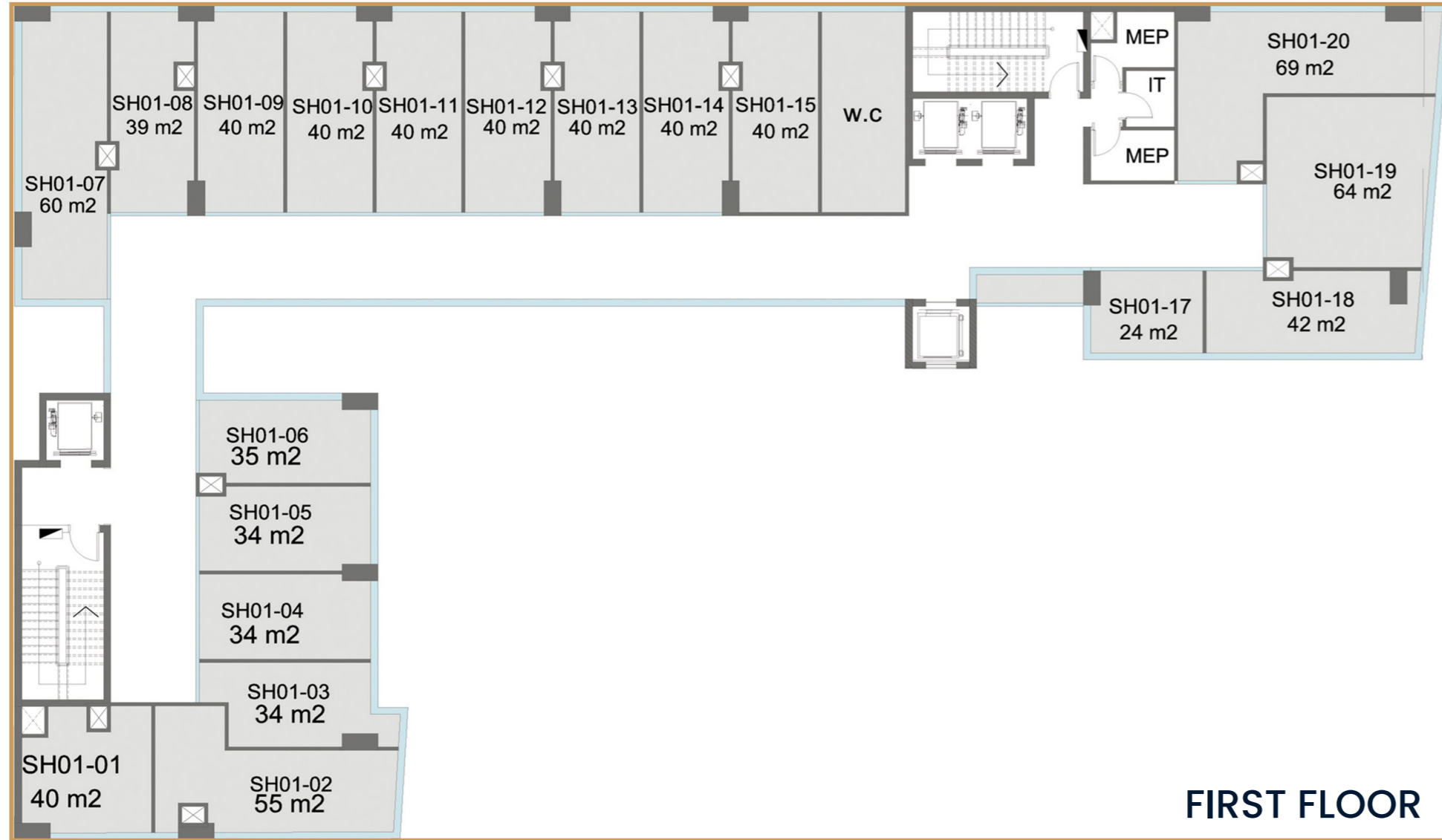


Commercial

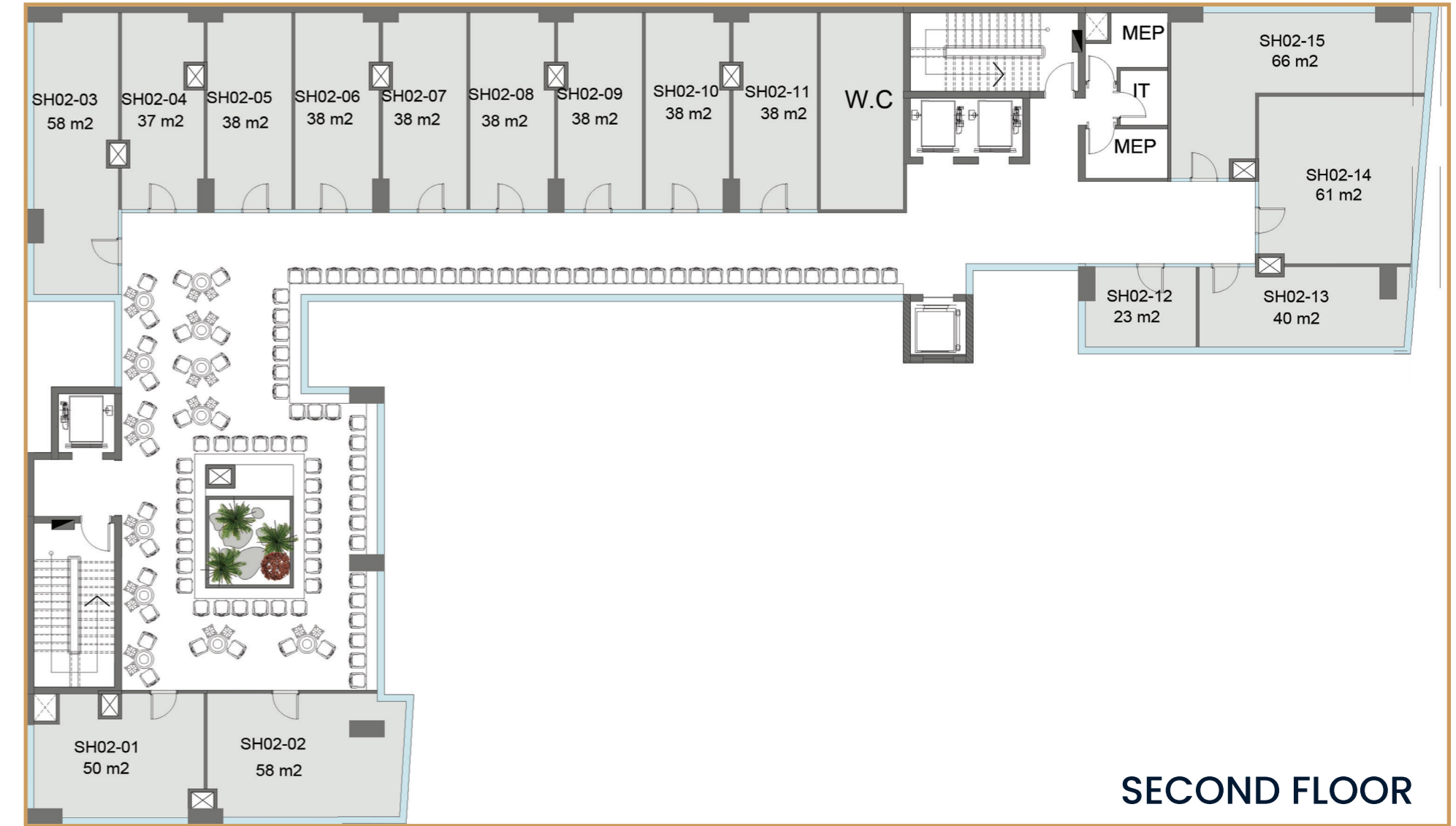


GROUND FLOOR

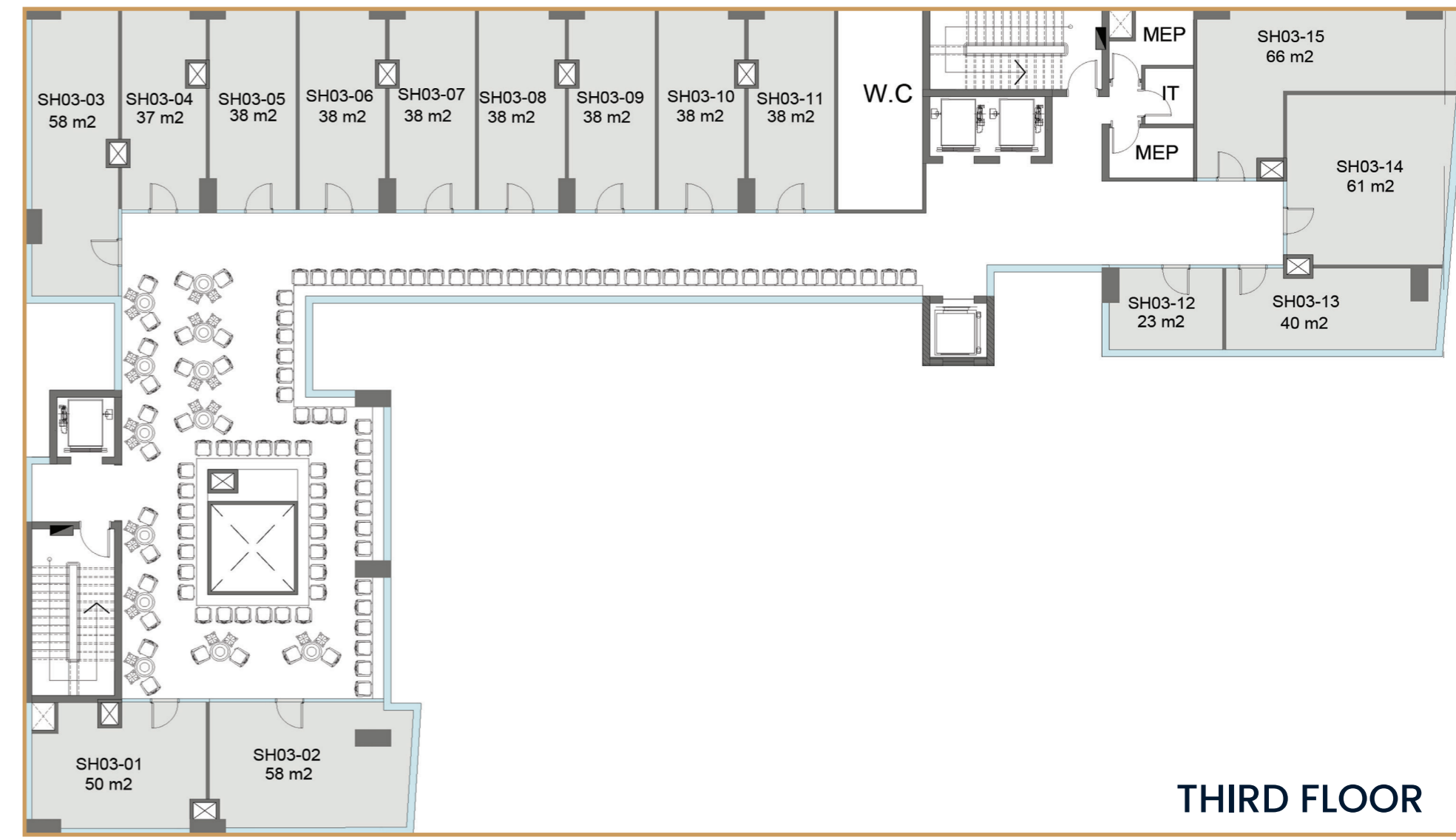




FIRST FLOOR

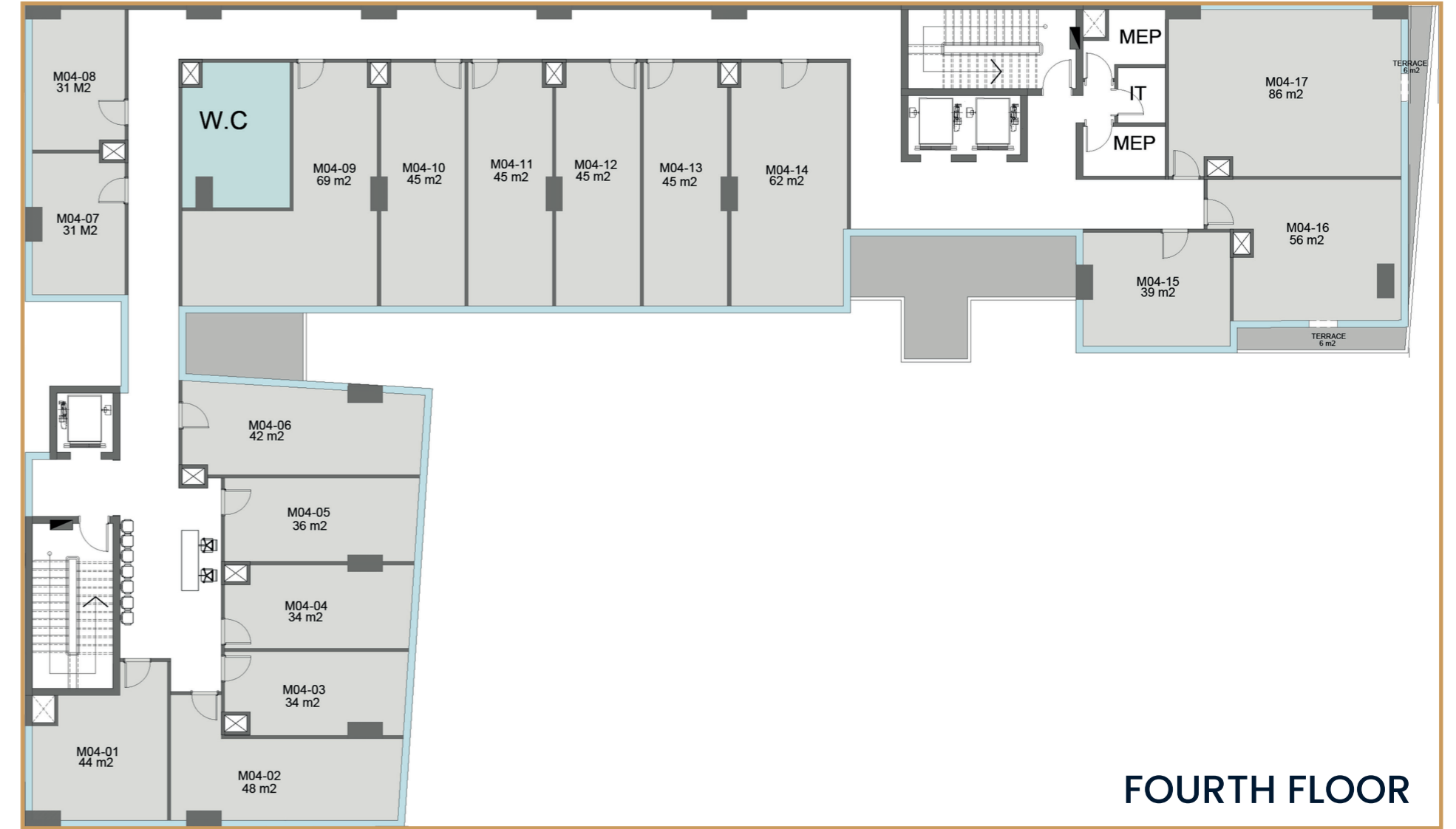


SECOND FLOOR

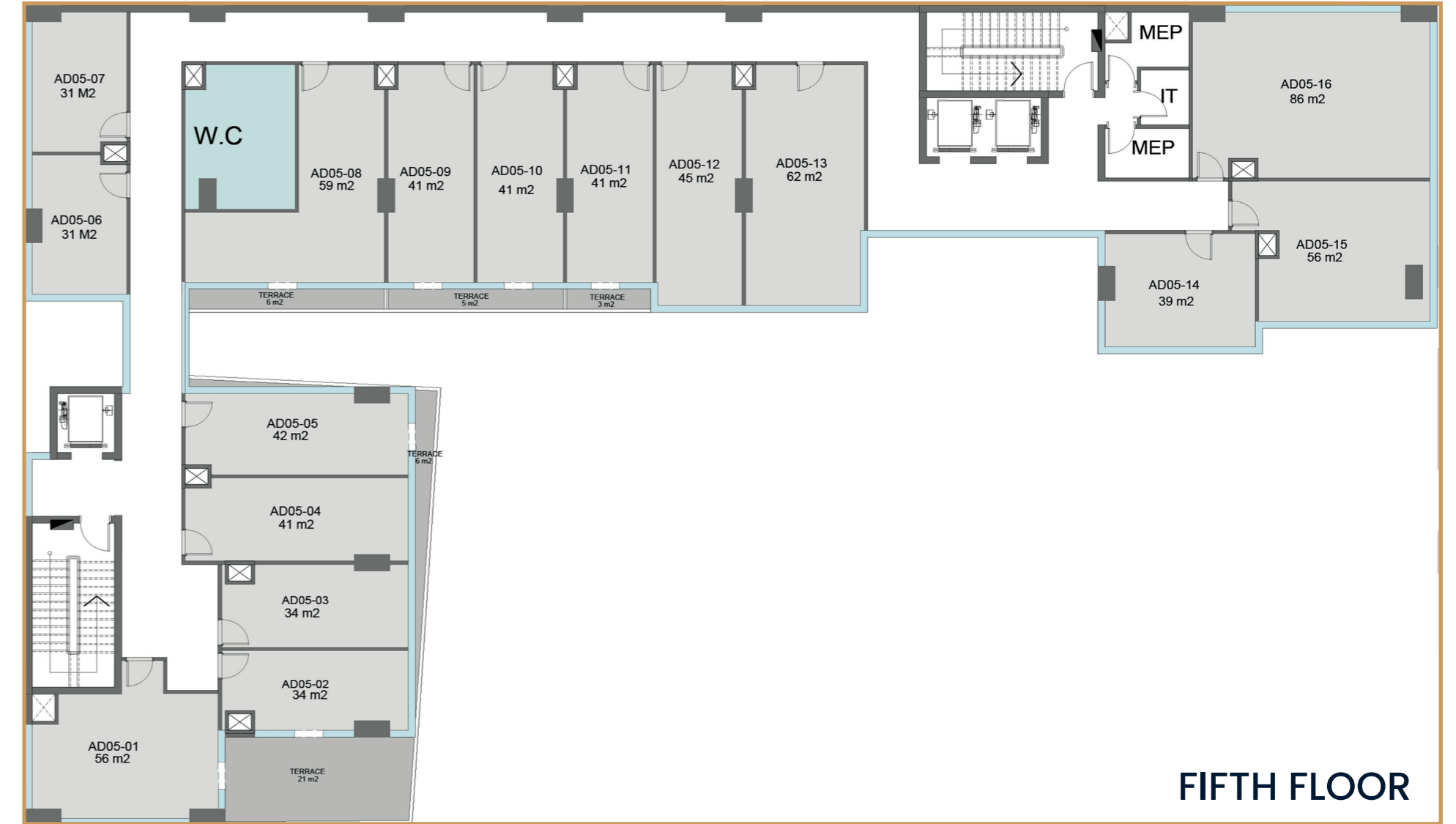




MEDICAL

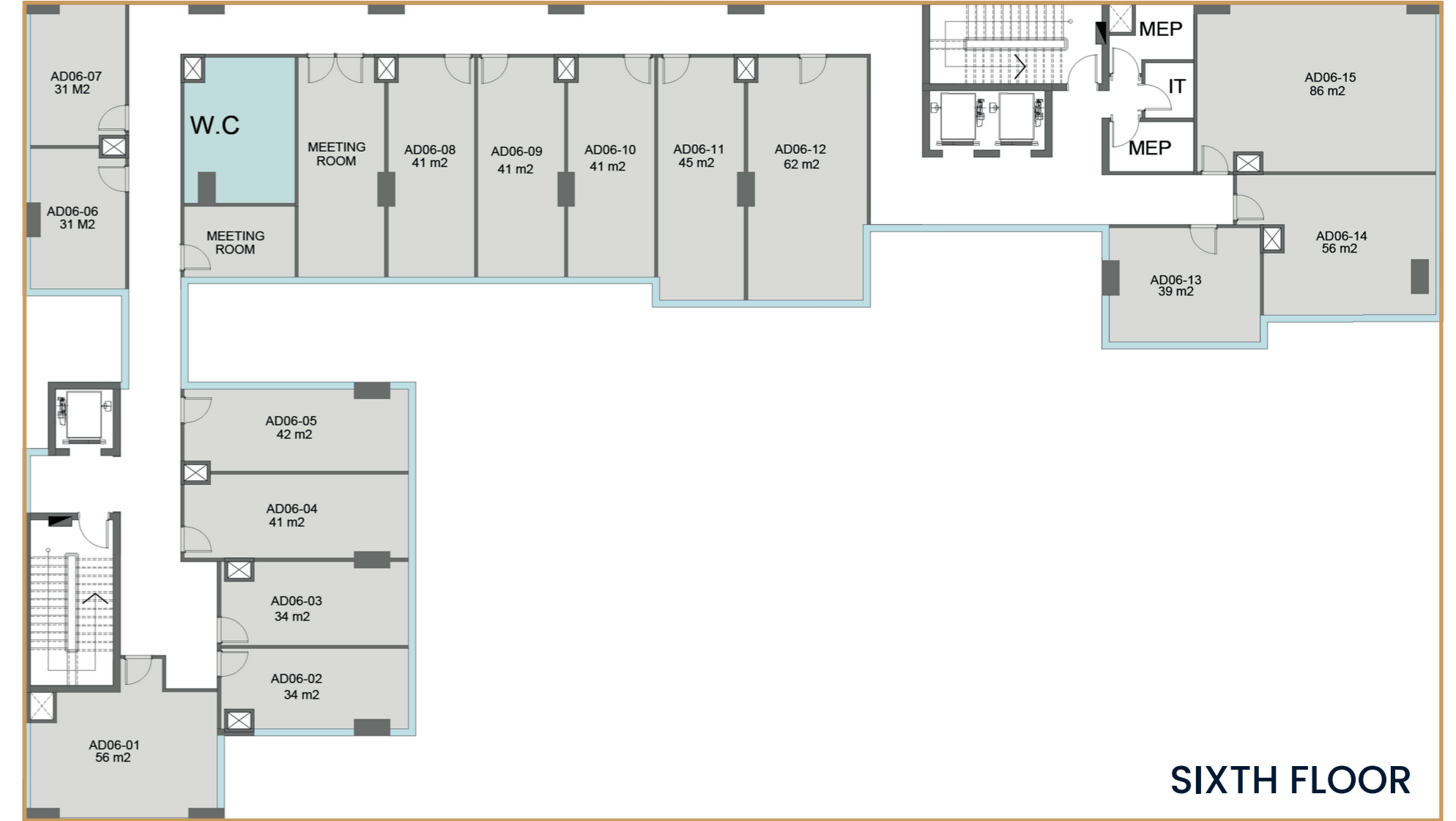


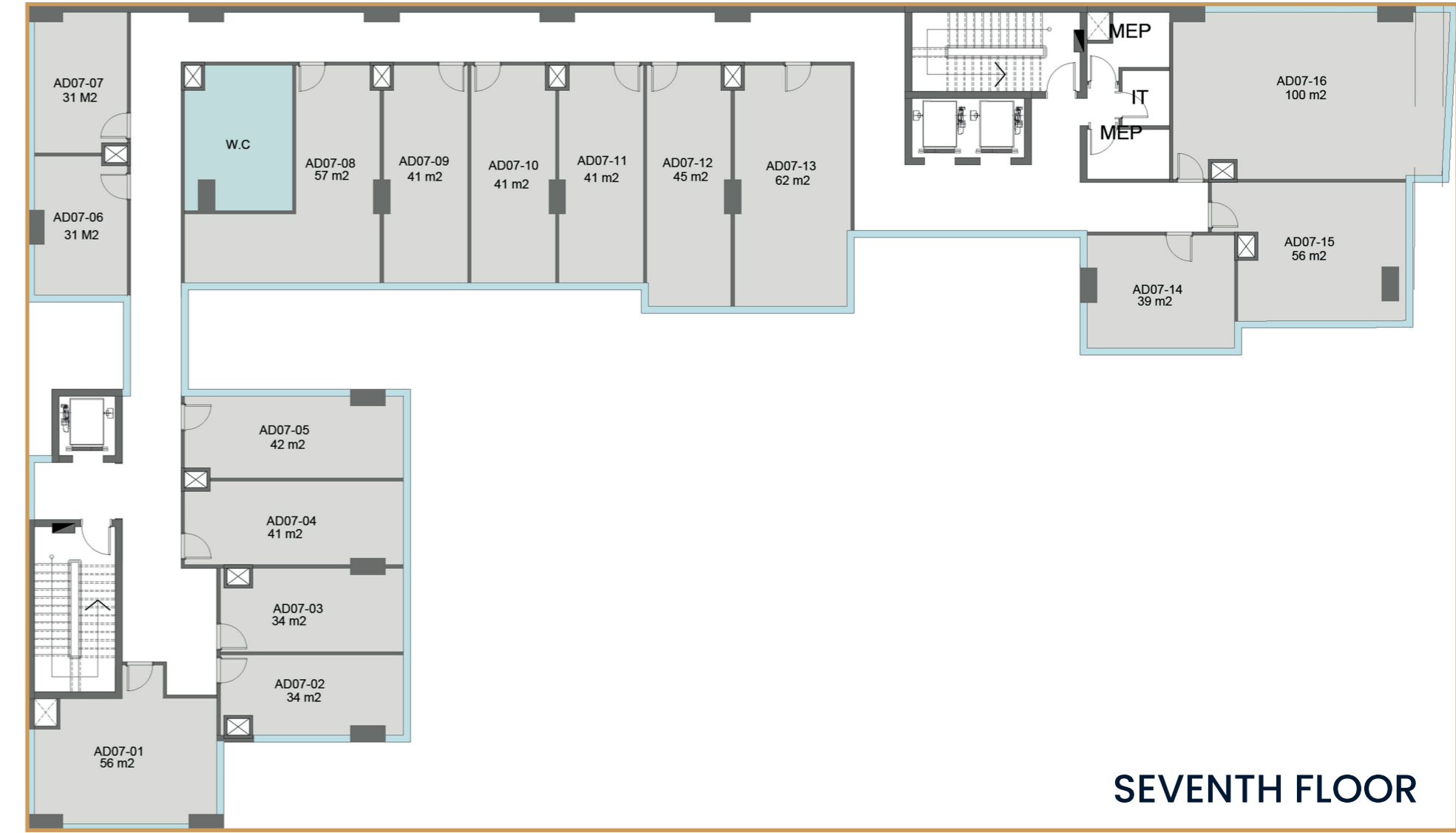
FOURTH FLOOR

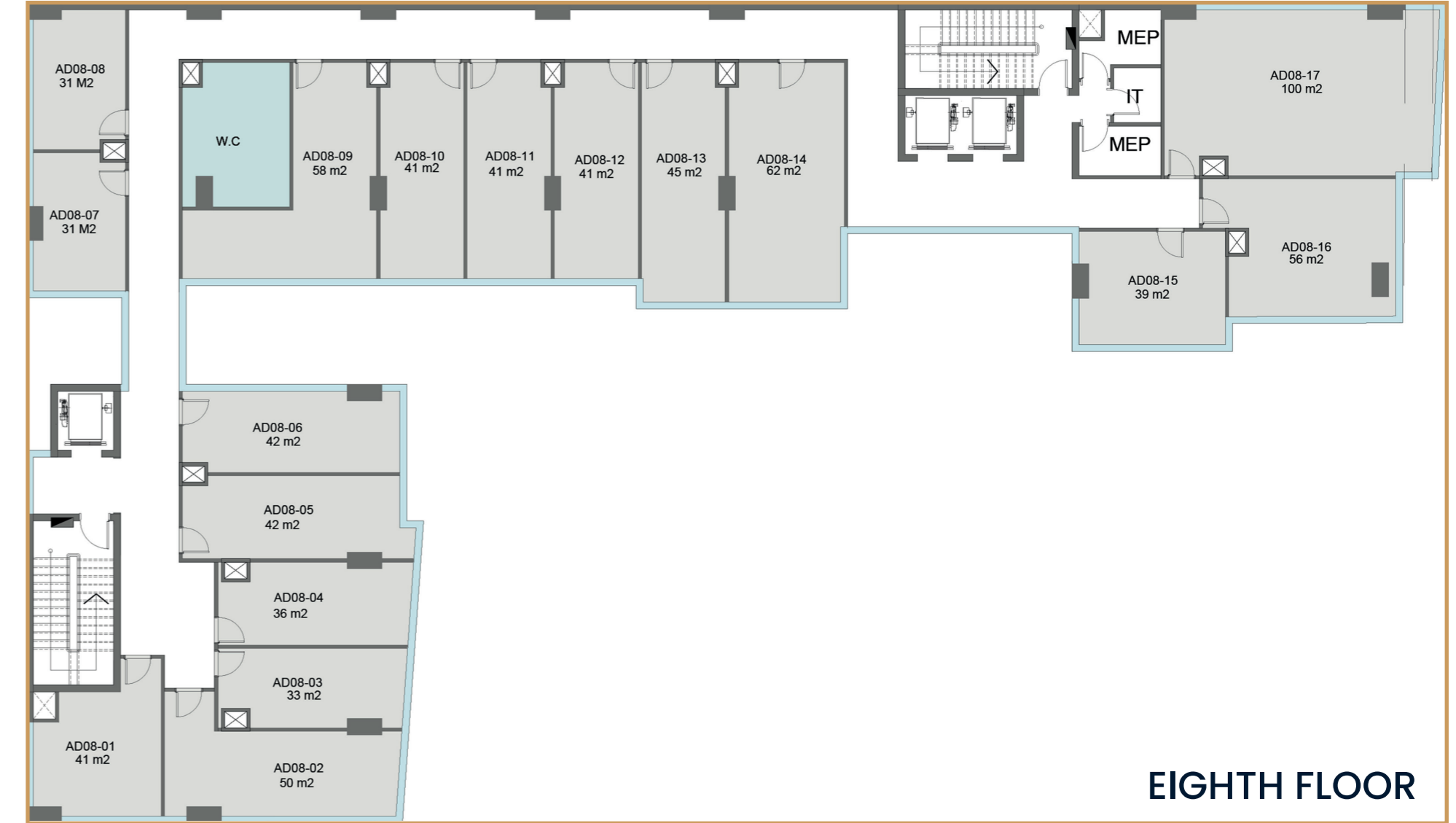




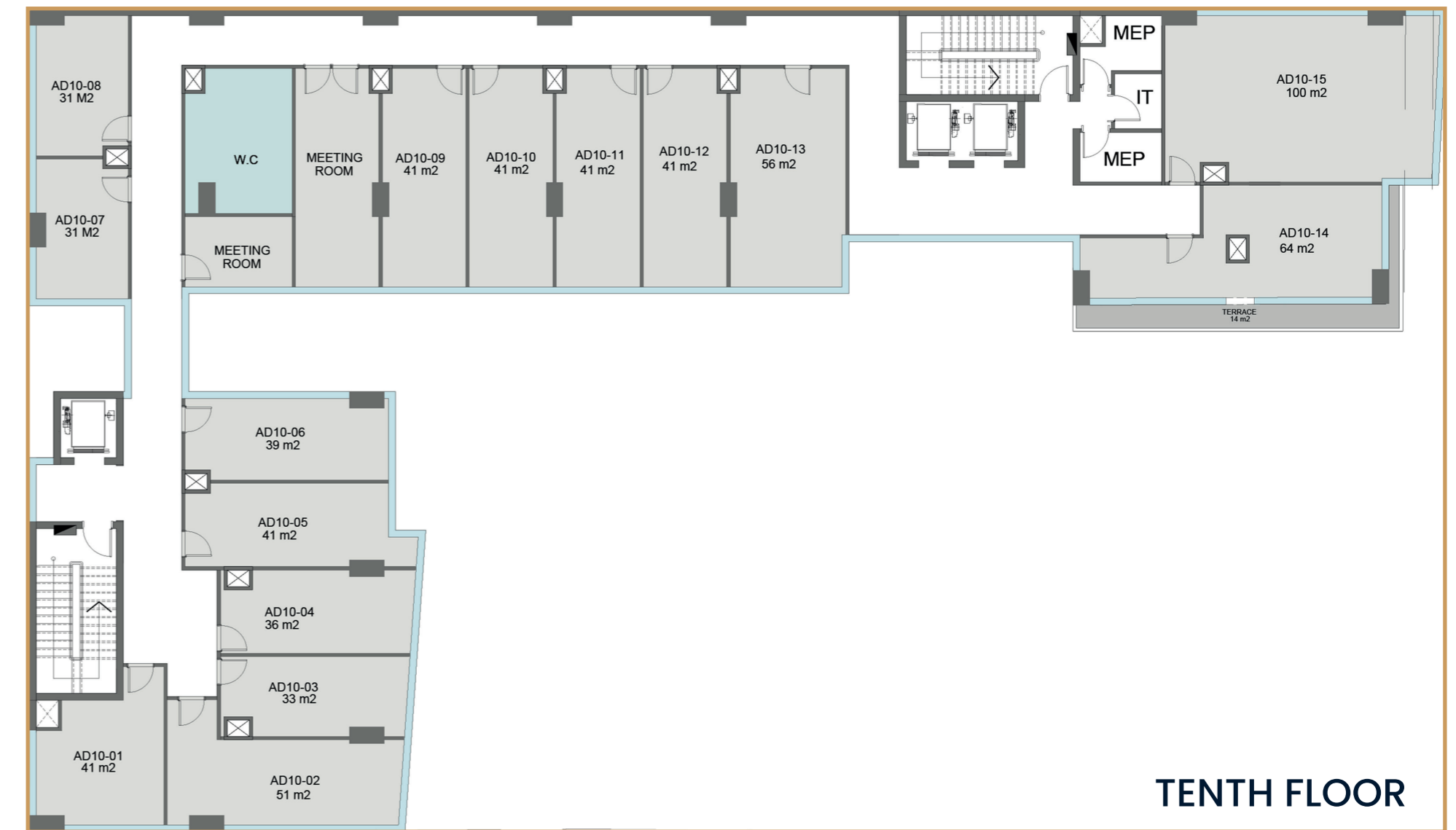
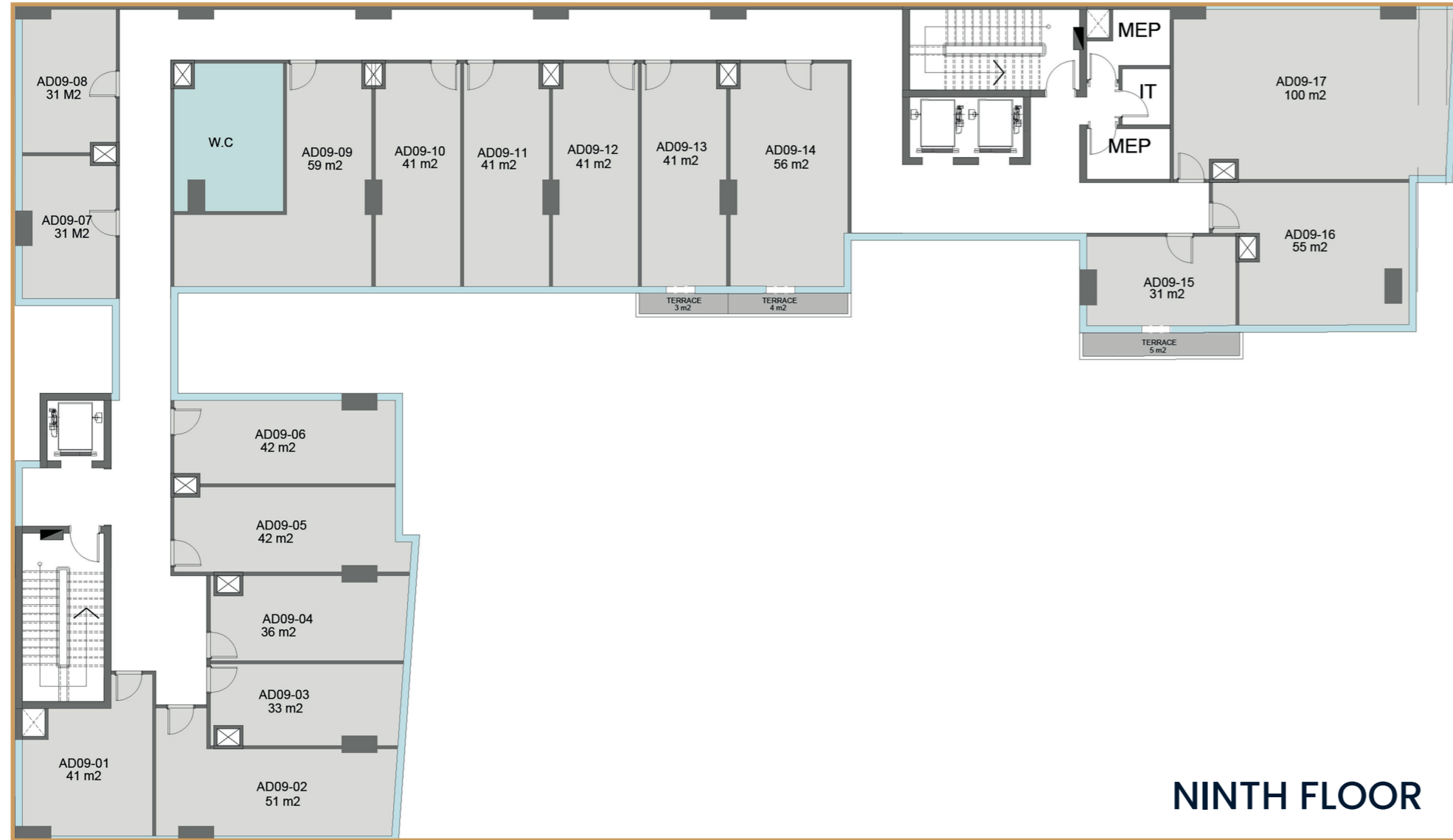
OFFICE SPACES







EIGHTH FLOOR



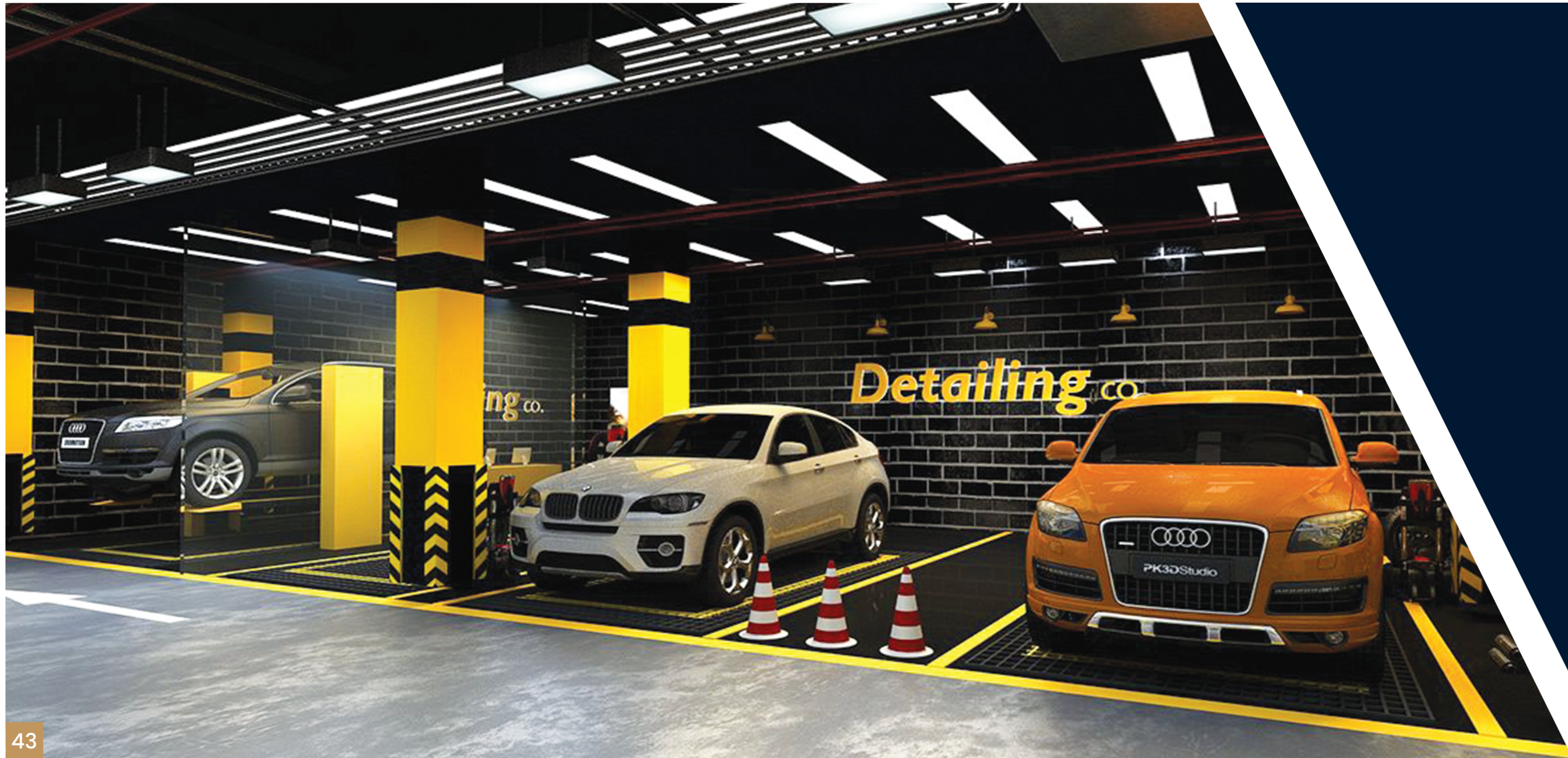


HOTEL APARTMENT



ELEVENTH FLOOR



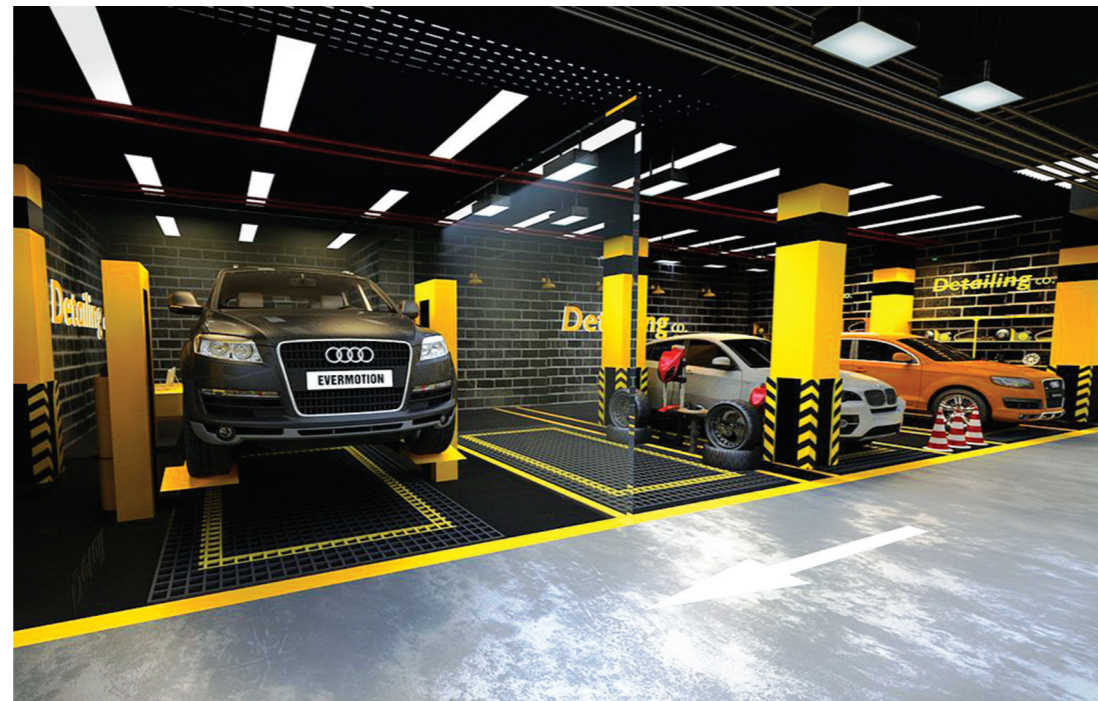


PARKING SERVICES

For more comfort and luxury for unit owners and mall visitors, one of the company's top priorities was providing car care and detailing services.

ADDITIONAL SERVICES

Apex offers a unique experience for the first time to owners and visitors alike, we take care of your car while you work or while you enjoy the shopping experience you and your family, an experienced team takes care of your car, cleans, polishes and rearranges it and removes this burden off your ankle.



In Partnership *With*

