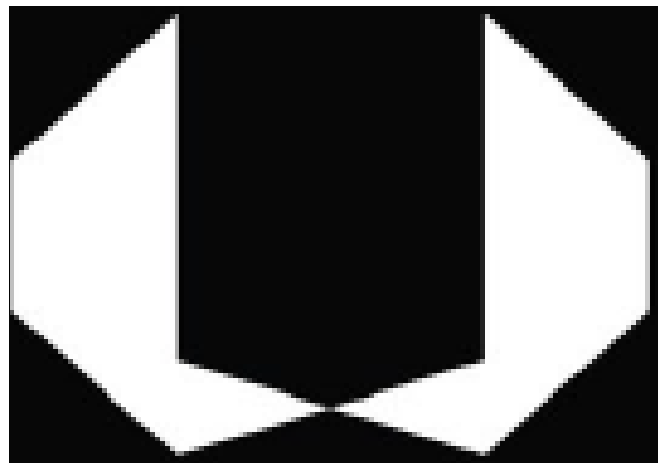


Project Details



UDORA

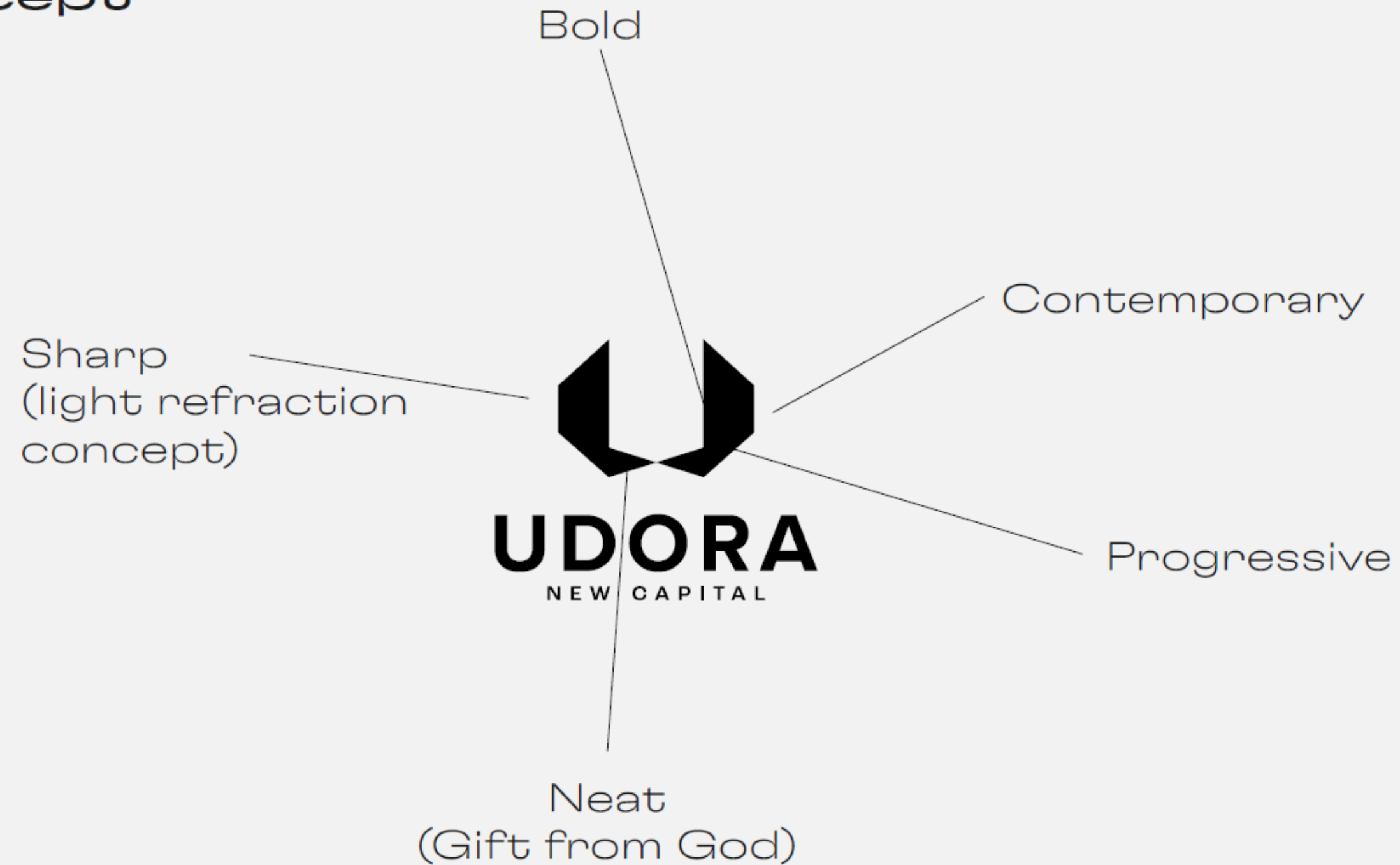
Why is it called UDORA?



UDORA

Why is it called UDORA?

Logo Concept

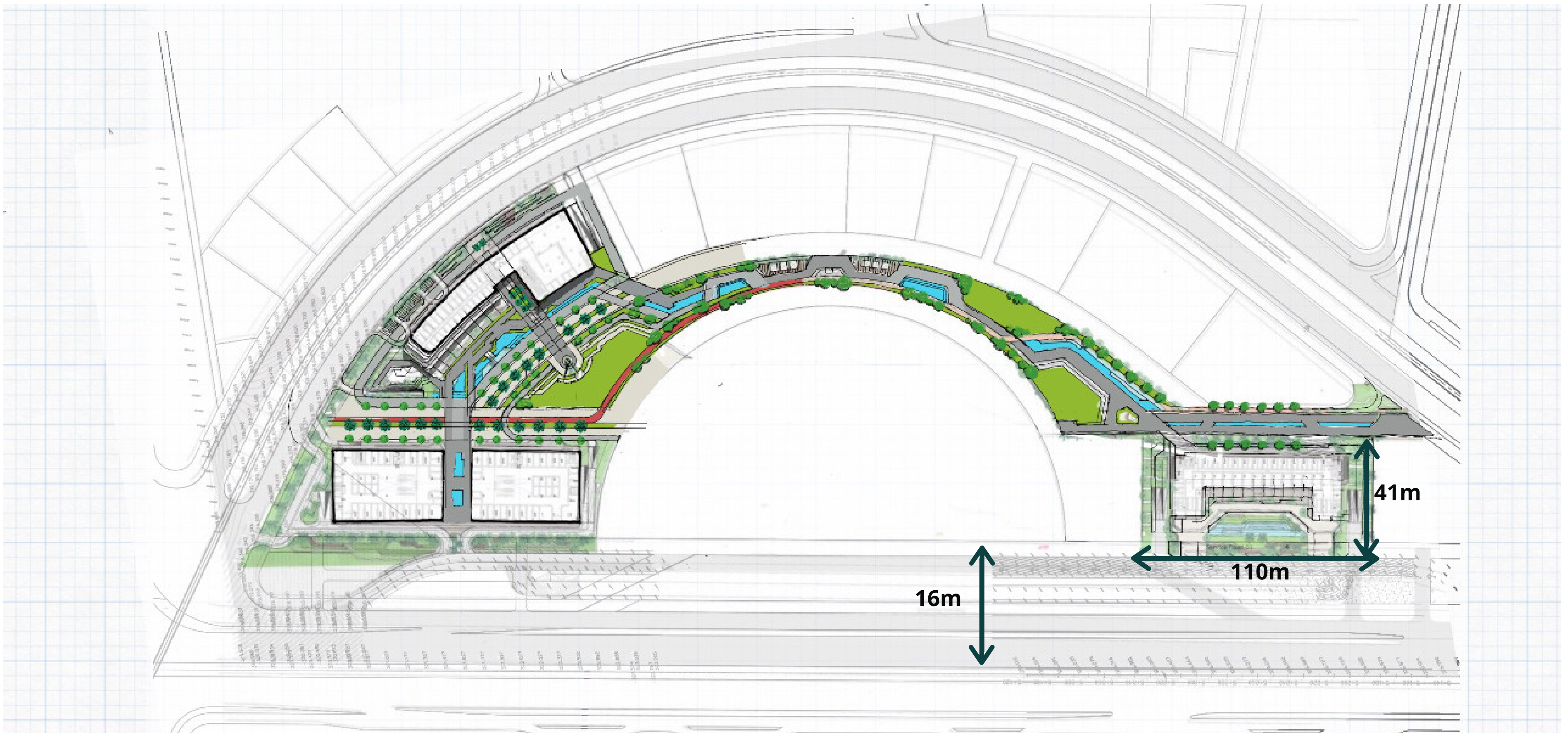


UDORA

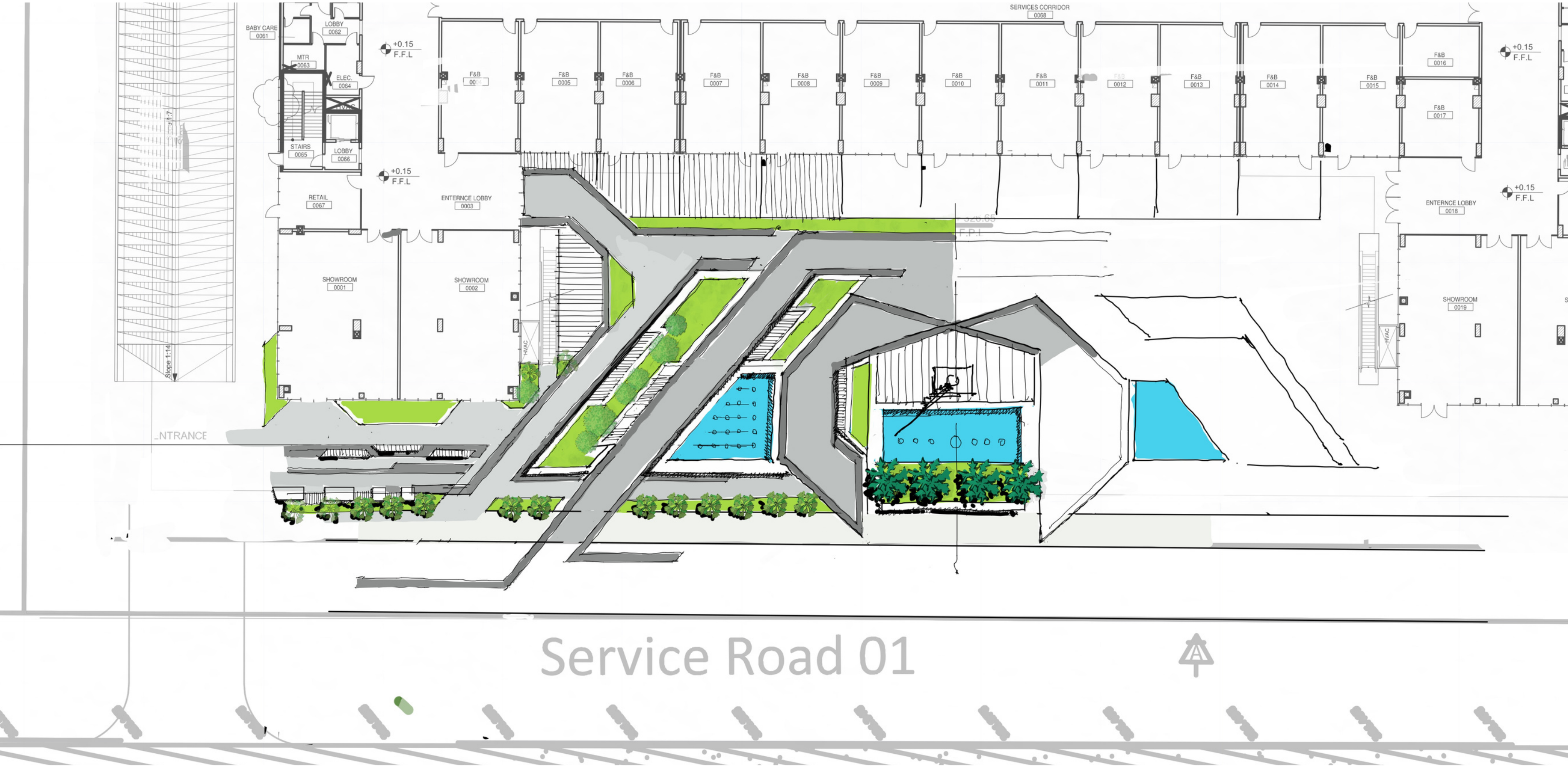
Location



Masterplan

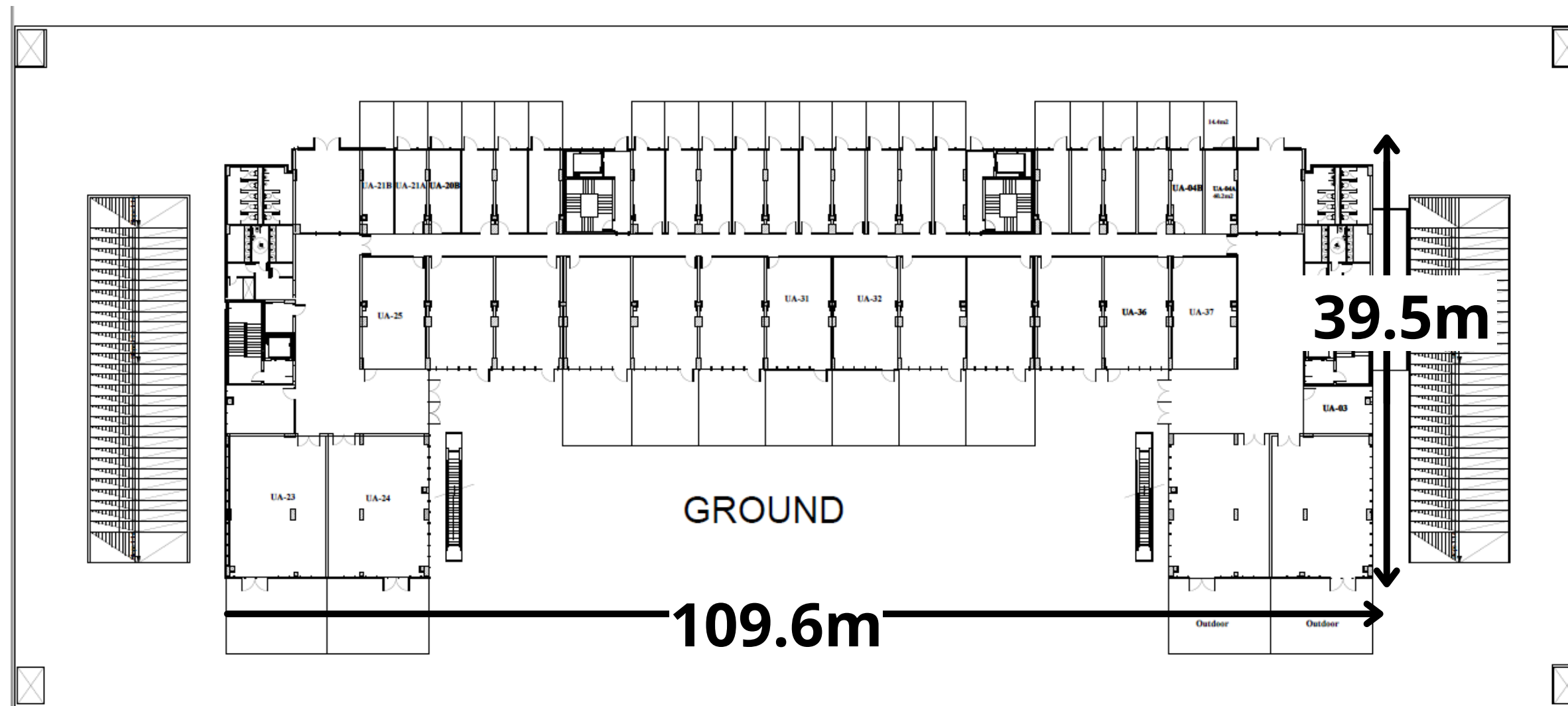


Masterplan



- **Project Details**

- Total Land Area 14,250 m²
- Ground Floor Area 3,150 m²
- Built Up Area 18,900 m²
- Number of Basements 2
- Ramps 2



- Area= 109.6x39.5m

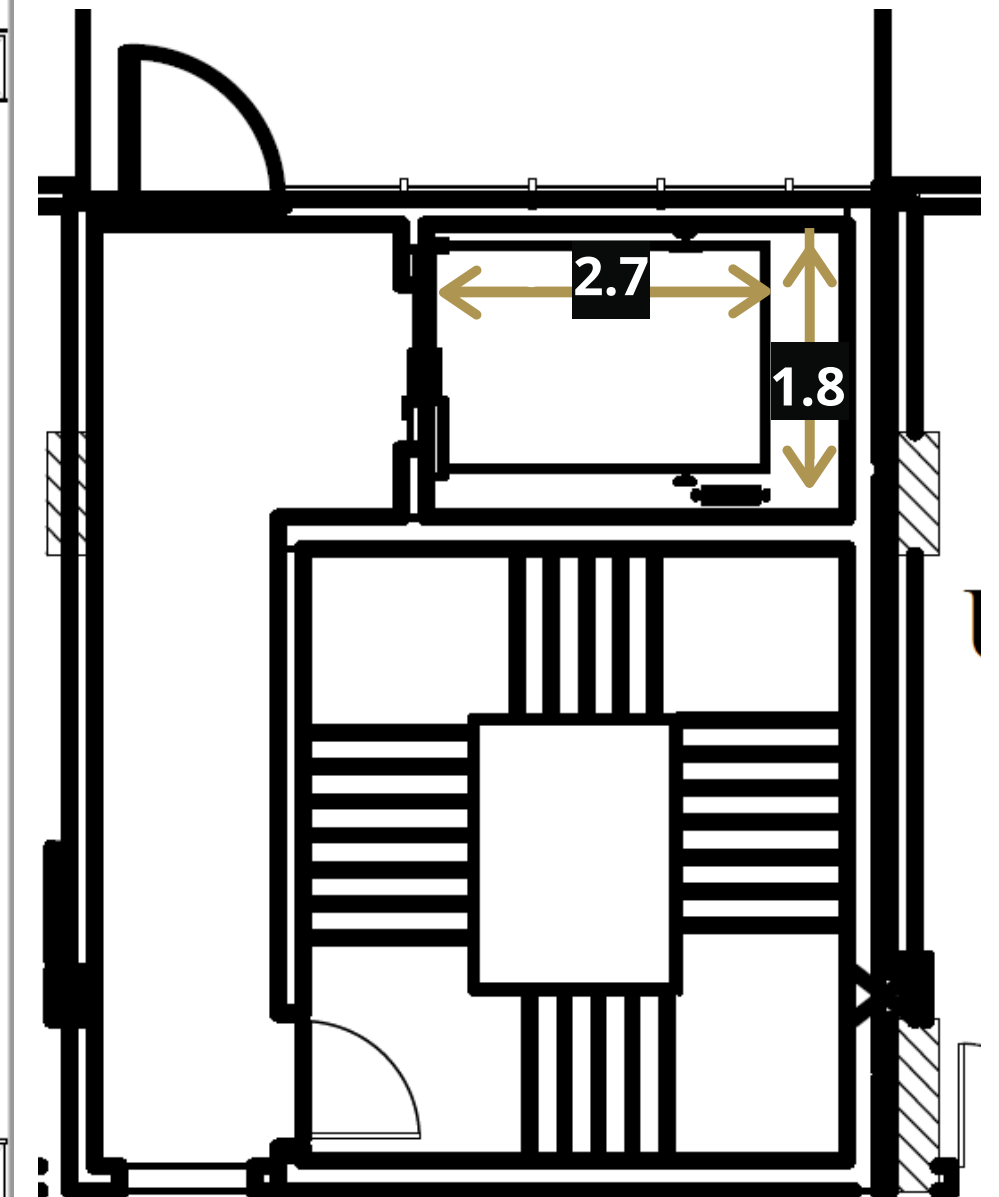
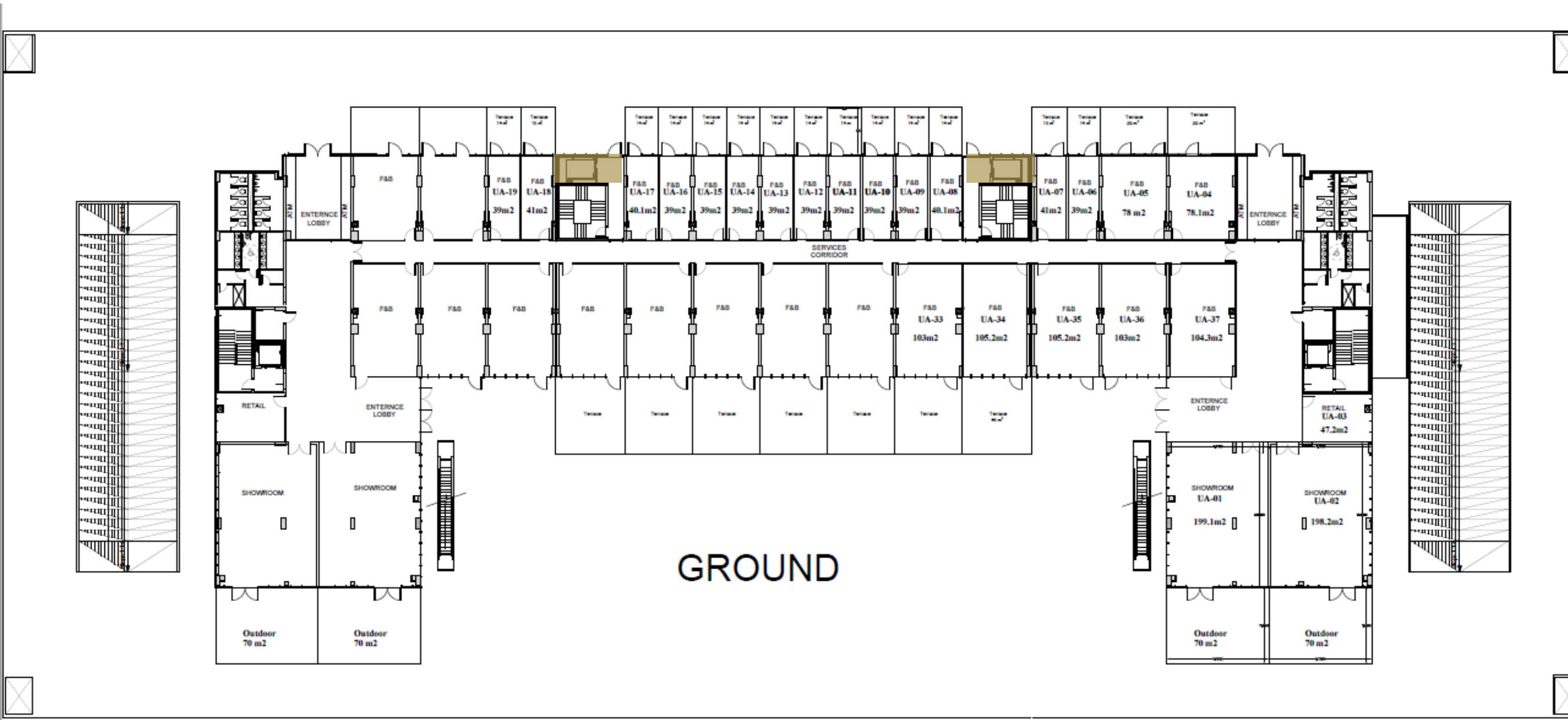
- **Buildings Common Details**

- Total number of shops 274
- Total number of cars 502
- Number of escalators 2
- Number of Service elevator 4
- Entrance and exit 4
- Corridors width 6m
- Service Corridor width 2m

- **Height**

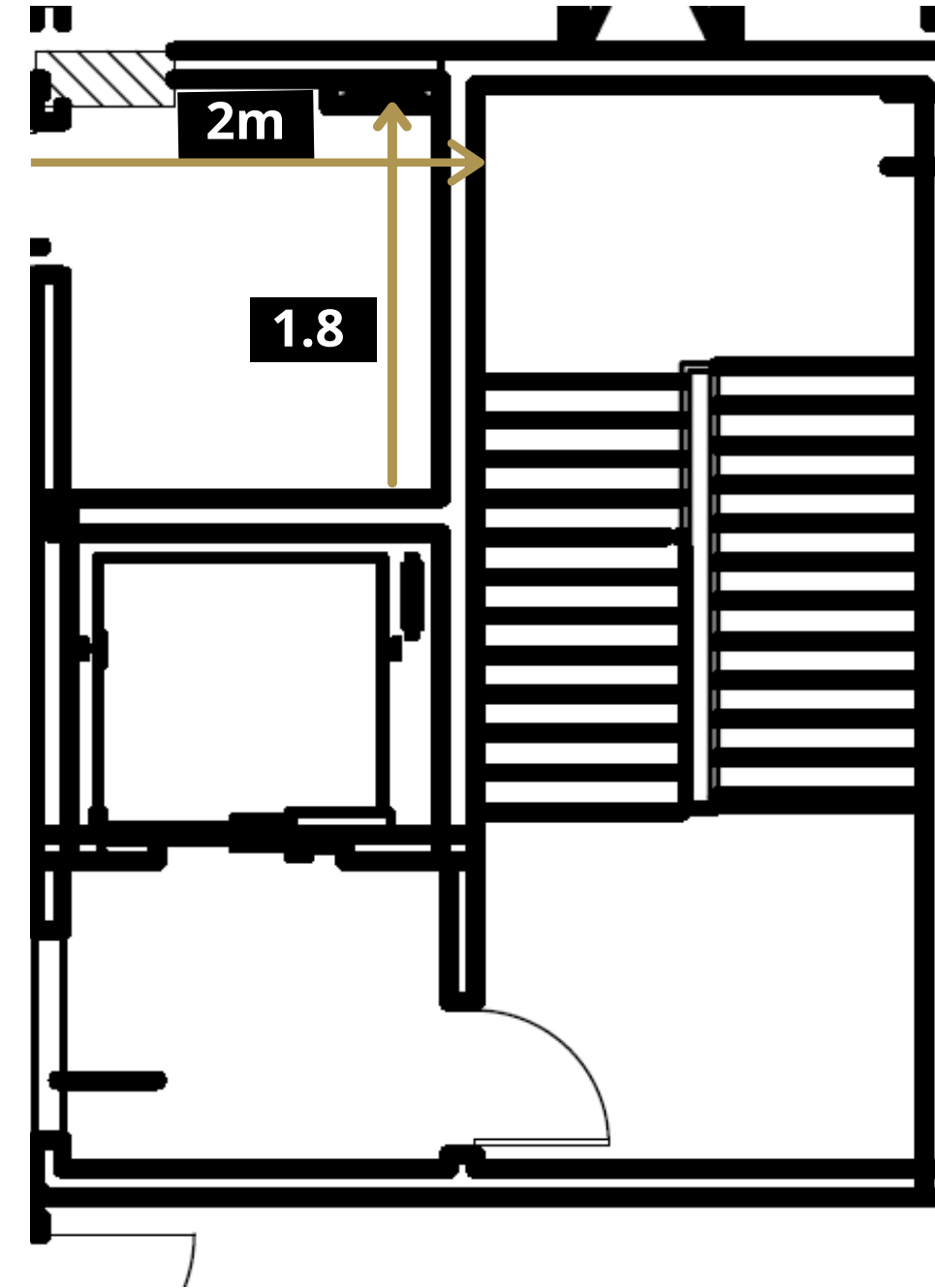
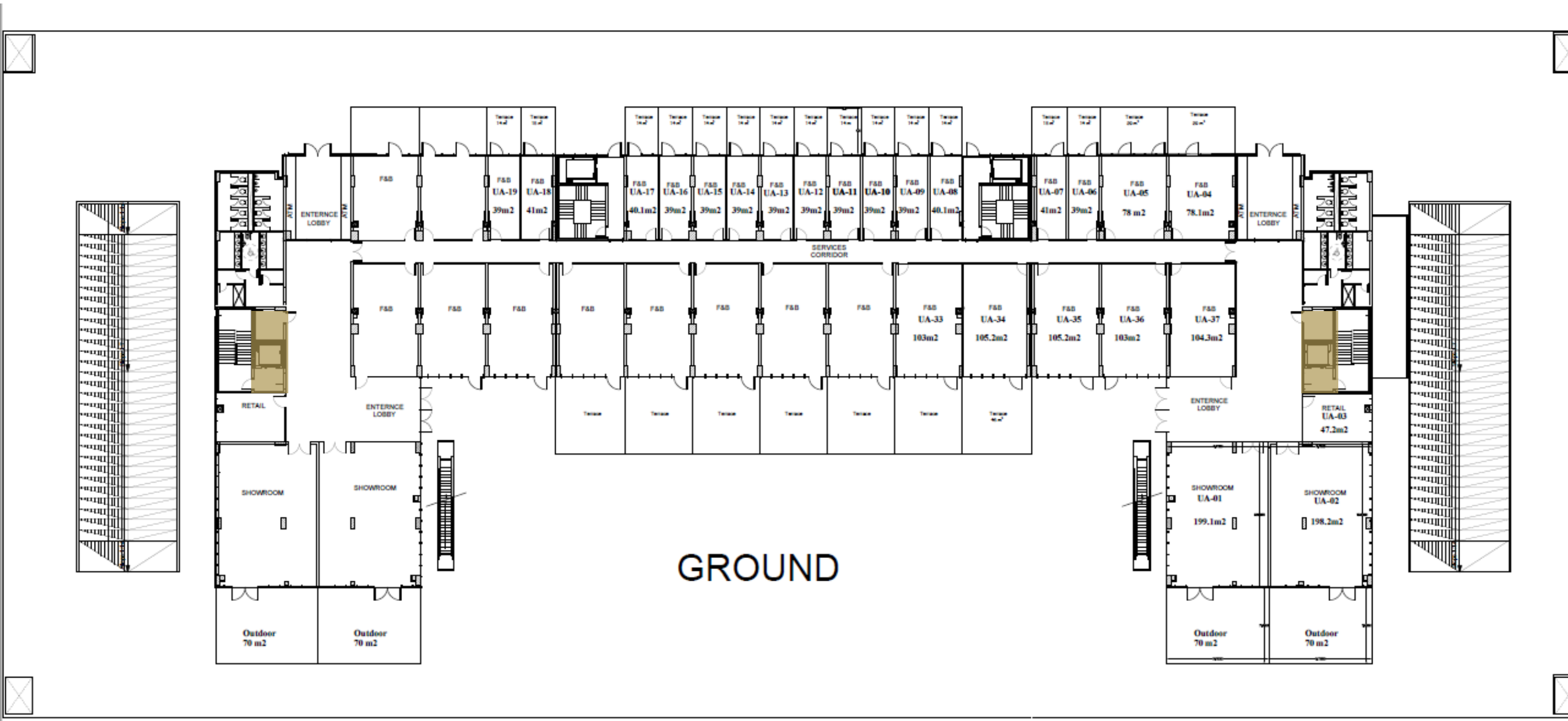
- Ground Floor= not less than 5m
- Typical Floors= not less than 4.2m

- Services (Elevators)



- Area= 2.7mx1.8m

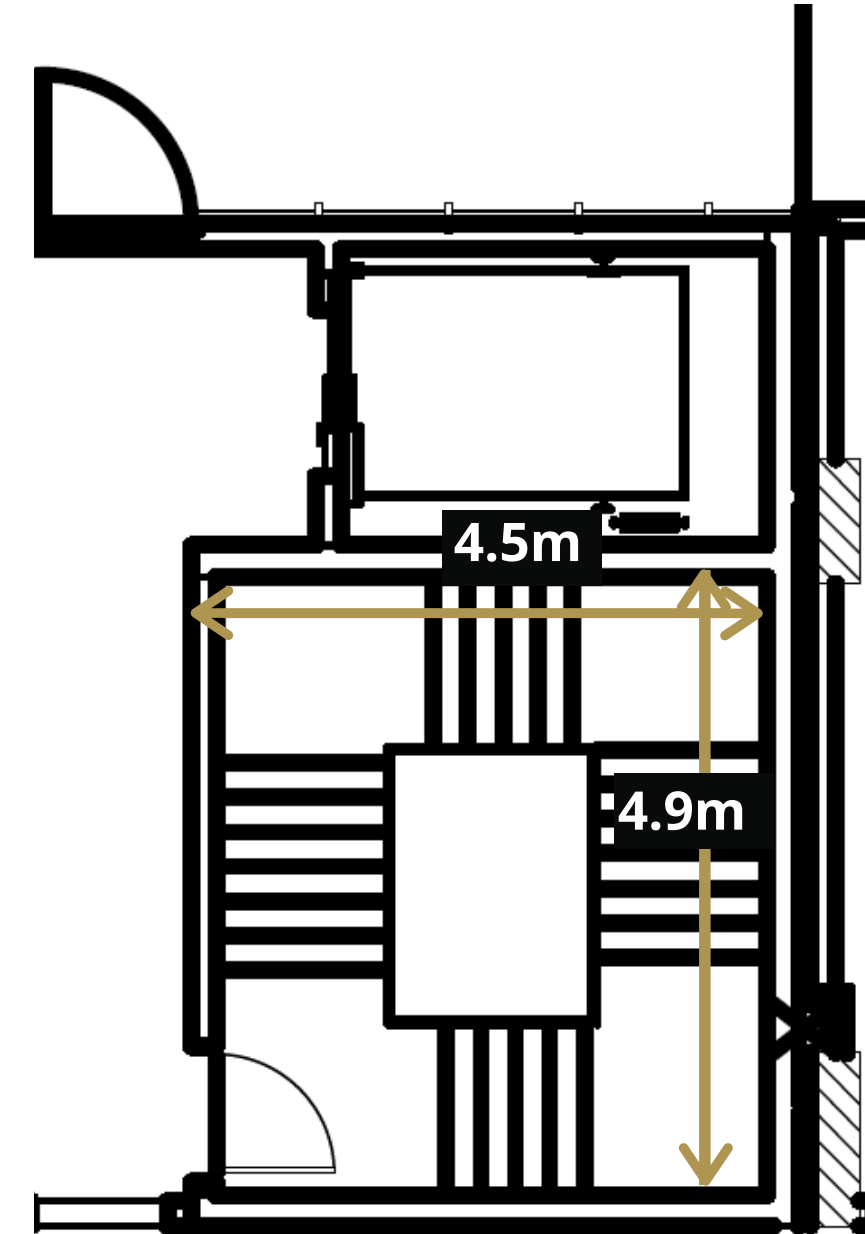
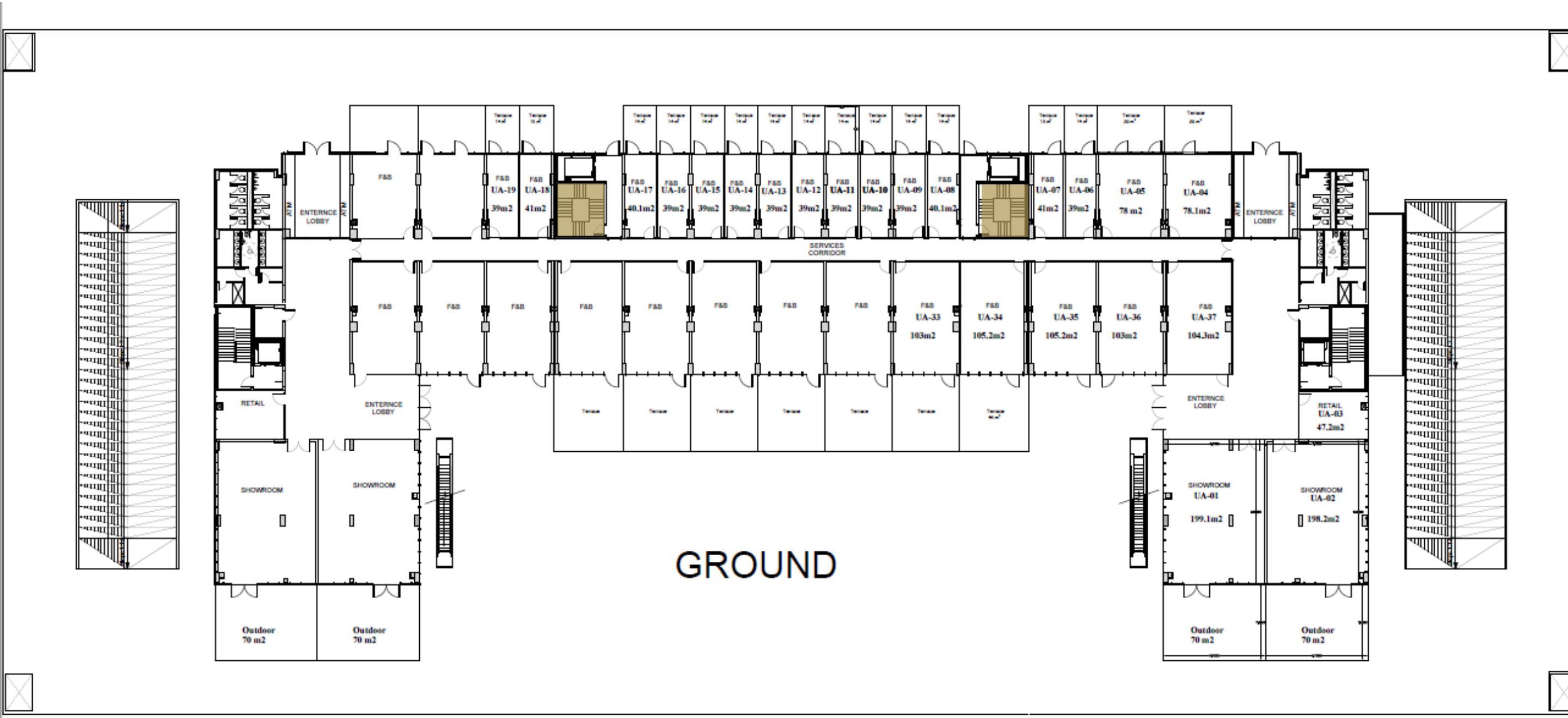
- (Elevators)



- Area= 2.0mx1.8m

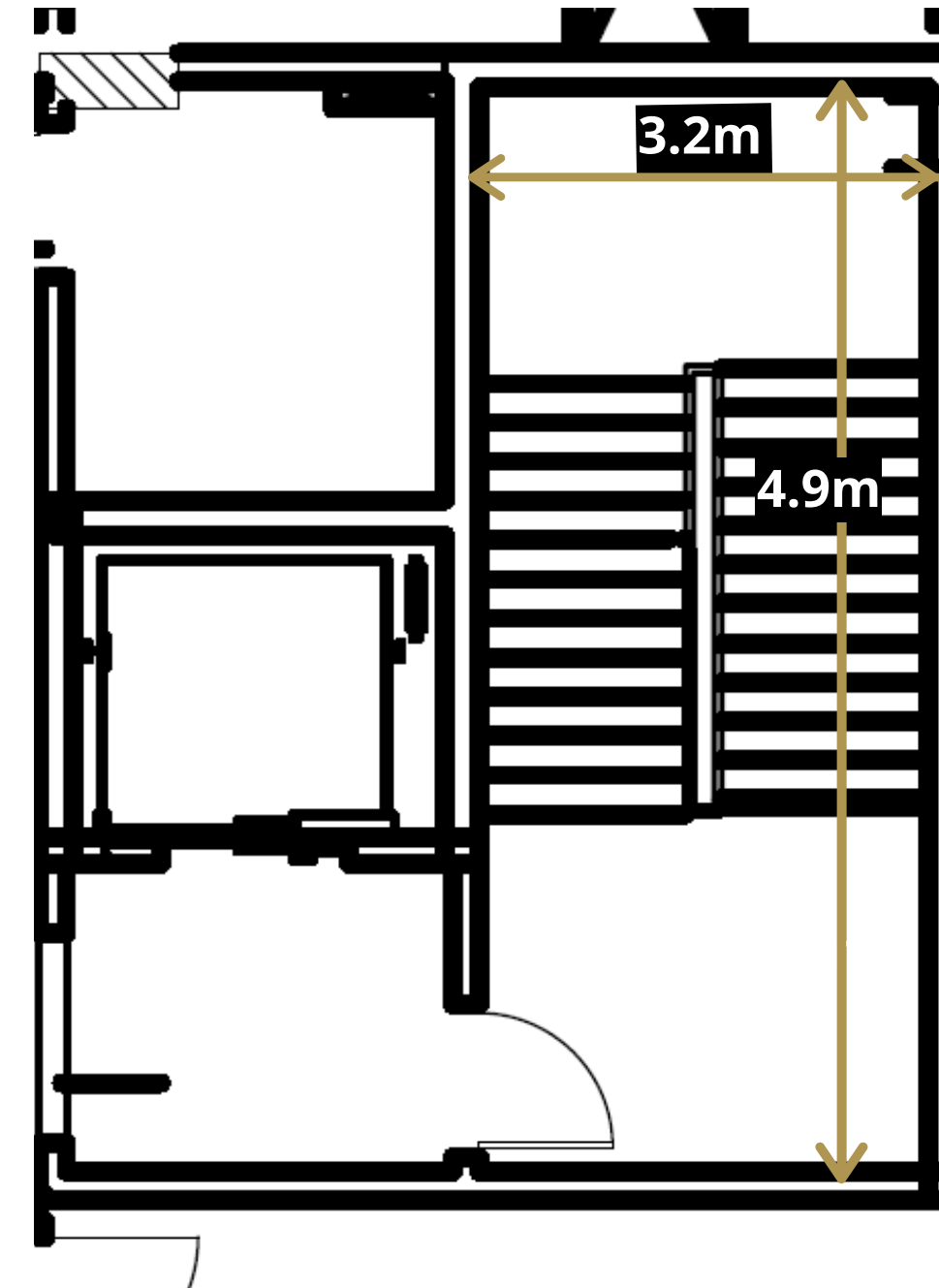
- **Services (Emergency Stairs)**

also known as a vertical circulation



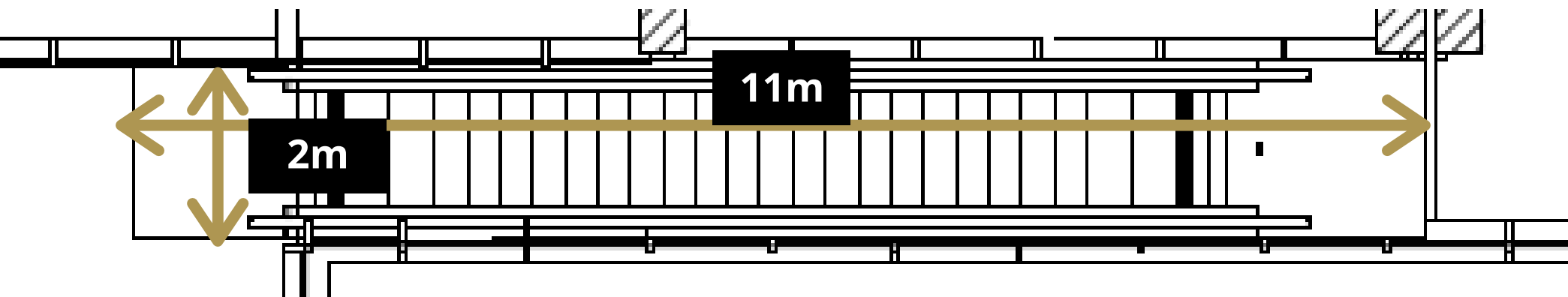
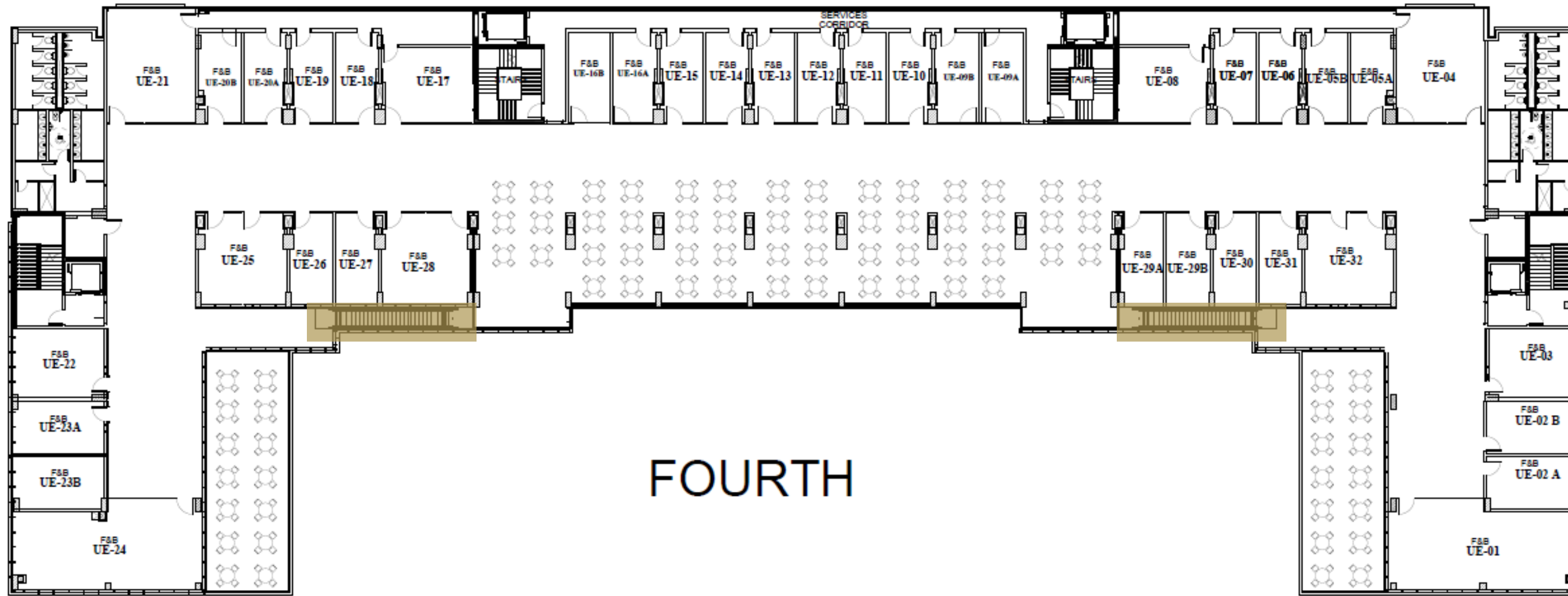
- Area= 4.9mx4.5m

- Services (Emergency Stairs)

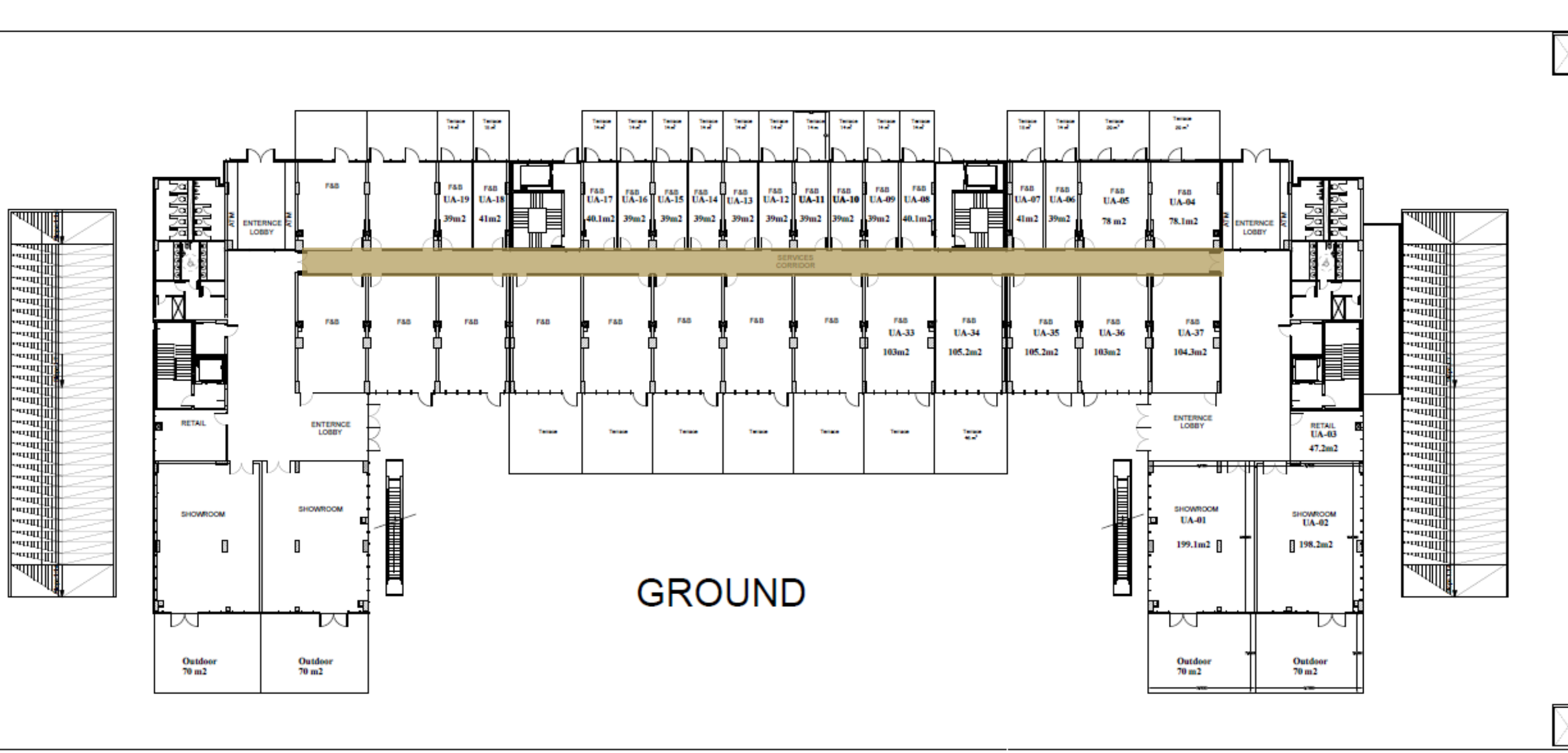


- Area= 4.9mx3.2m

- **Services (Escalator)**
also known as a vertical circulation

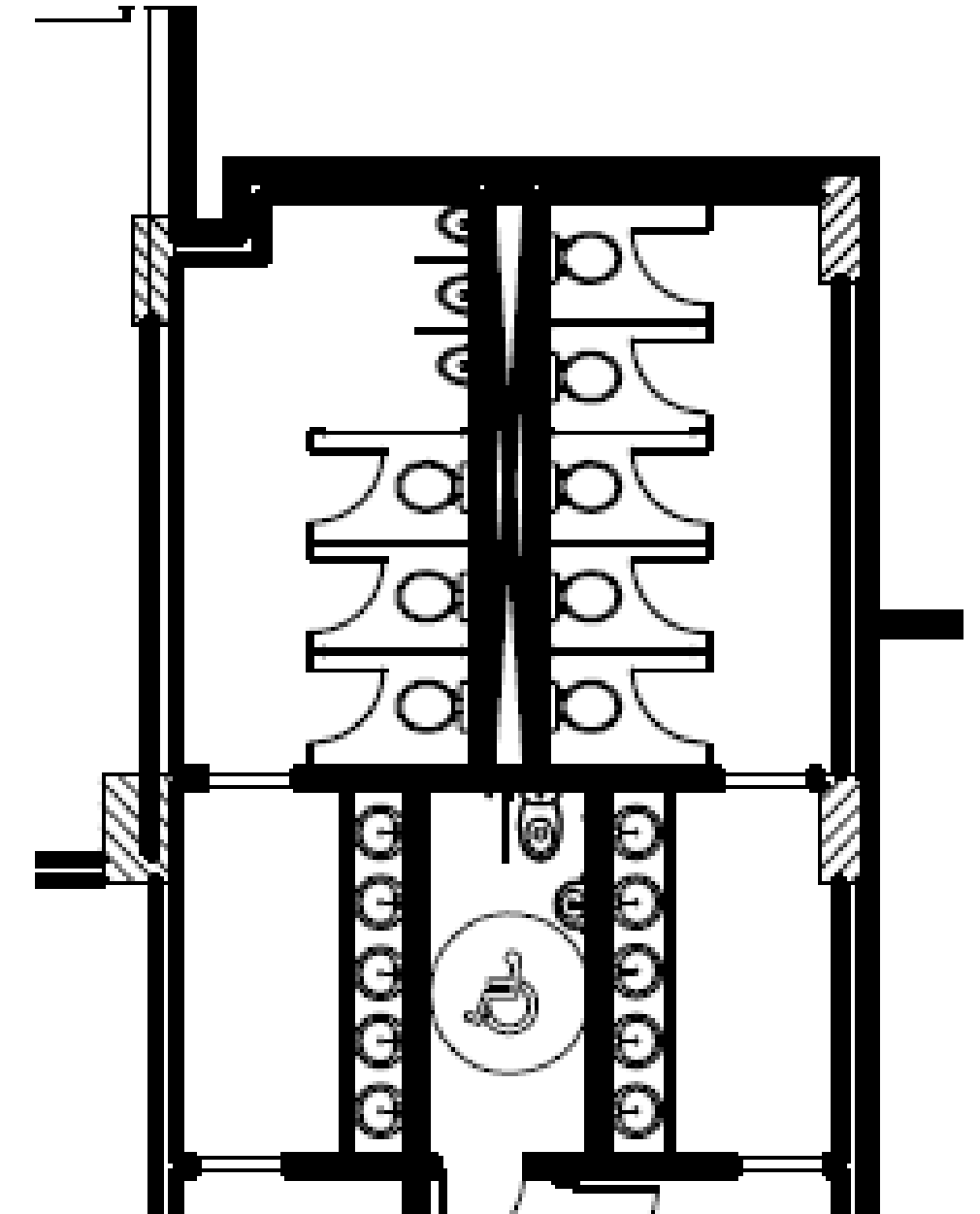
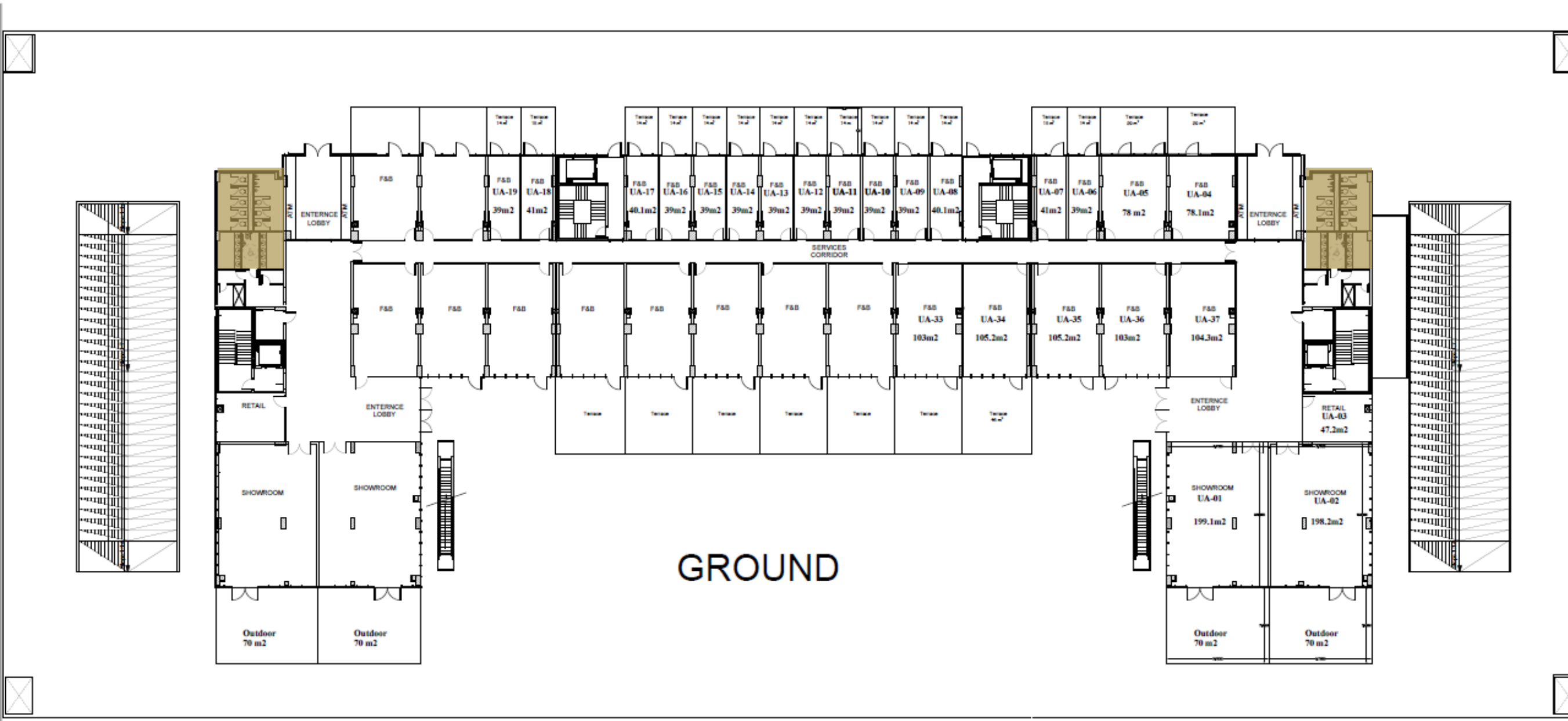


- Services (Service Corridor)



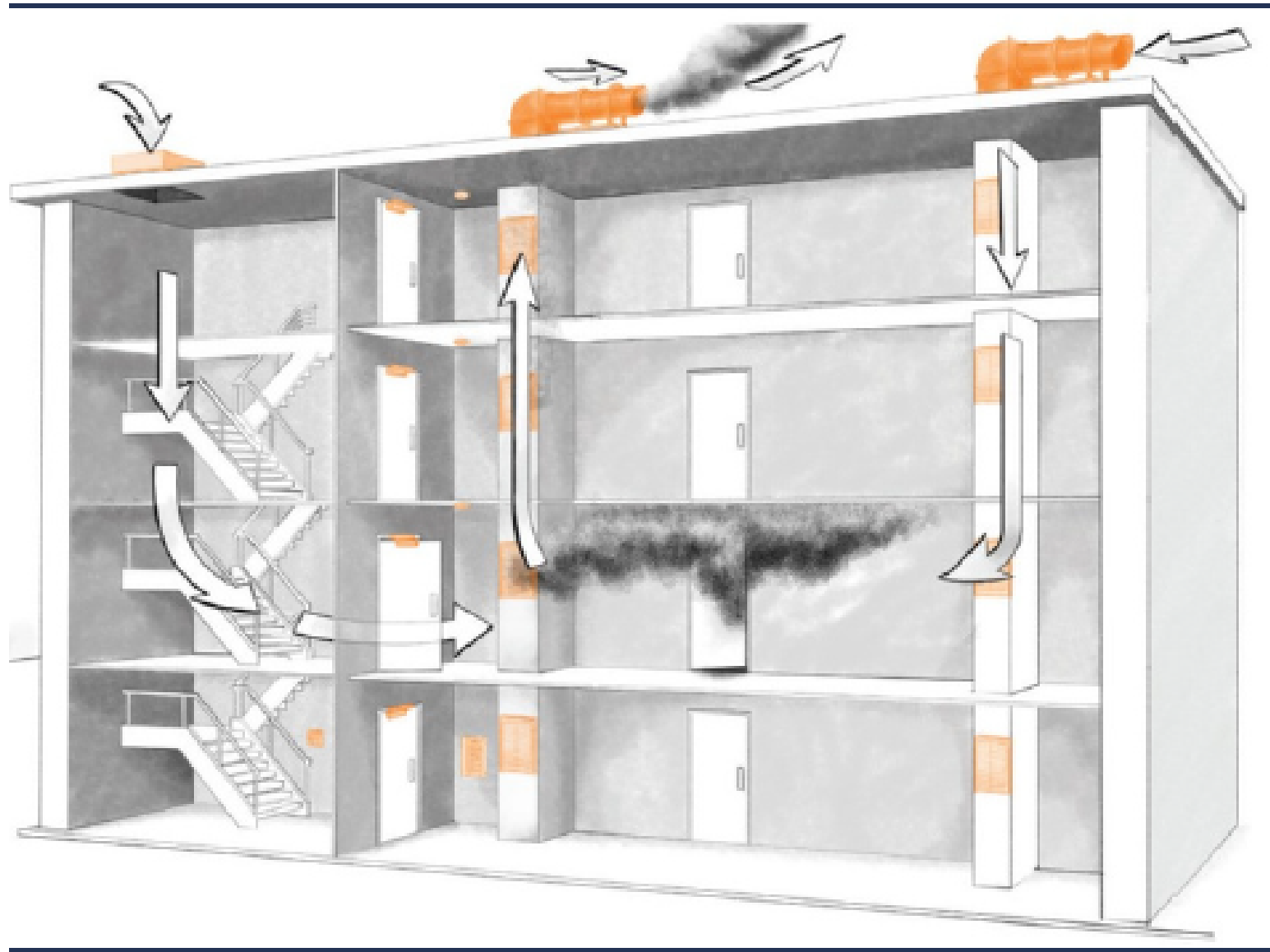
- Length=84m
- Width= 2m

- **Services (Toilets)**



- 16 toilet seat
- 2 handicapped toilet
- 6 urinals

- **Ducts**



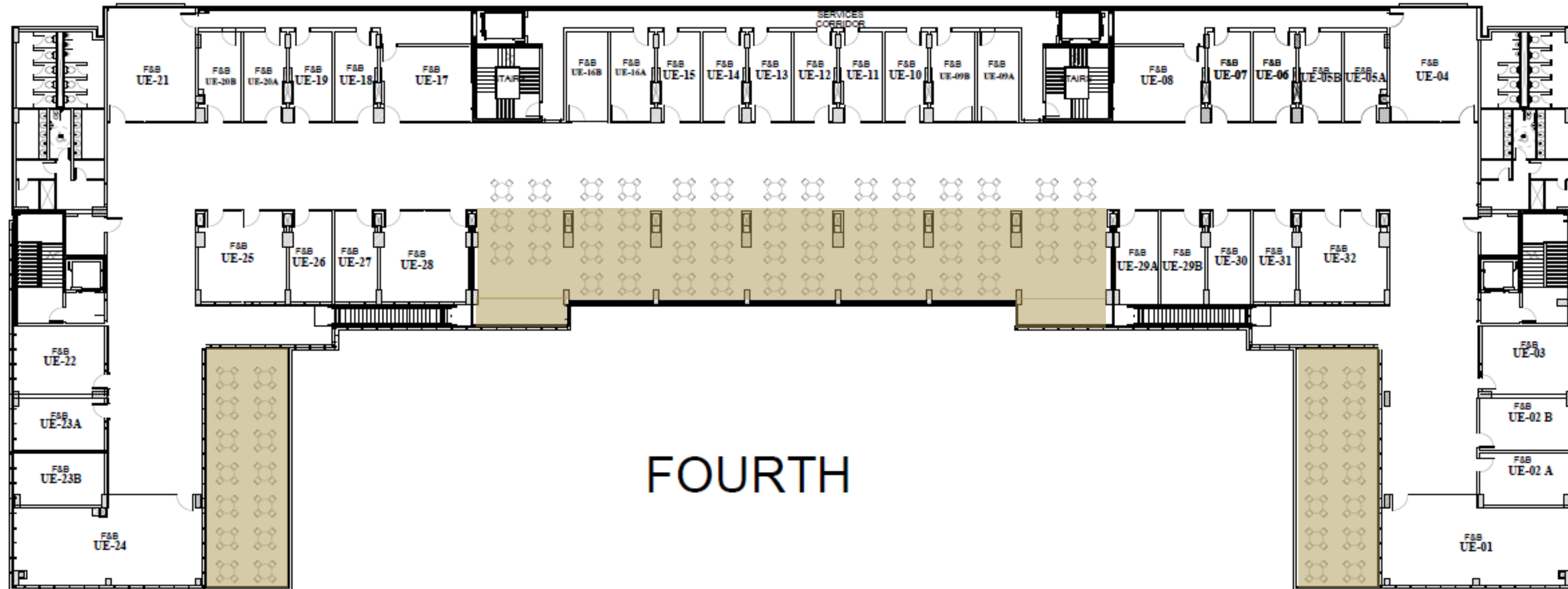
- Vertical Duct
- Wet area, suction, and ventilation
- 0.7mx1.1m



- Horizontal Duct
- Fire alarm, HVAC, sprinklers, lighting, low current voltage

- **Food Court Area**

- **Fourth floor**
- **Area= 600m average**



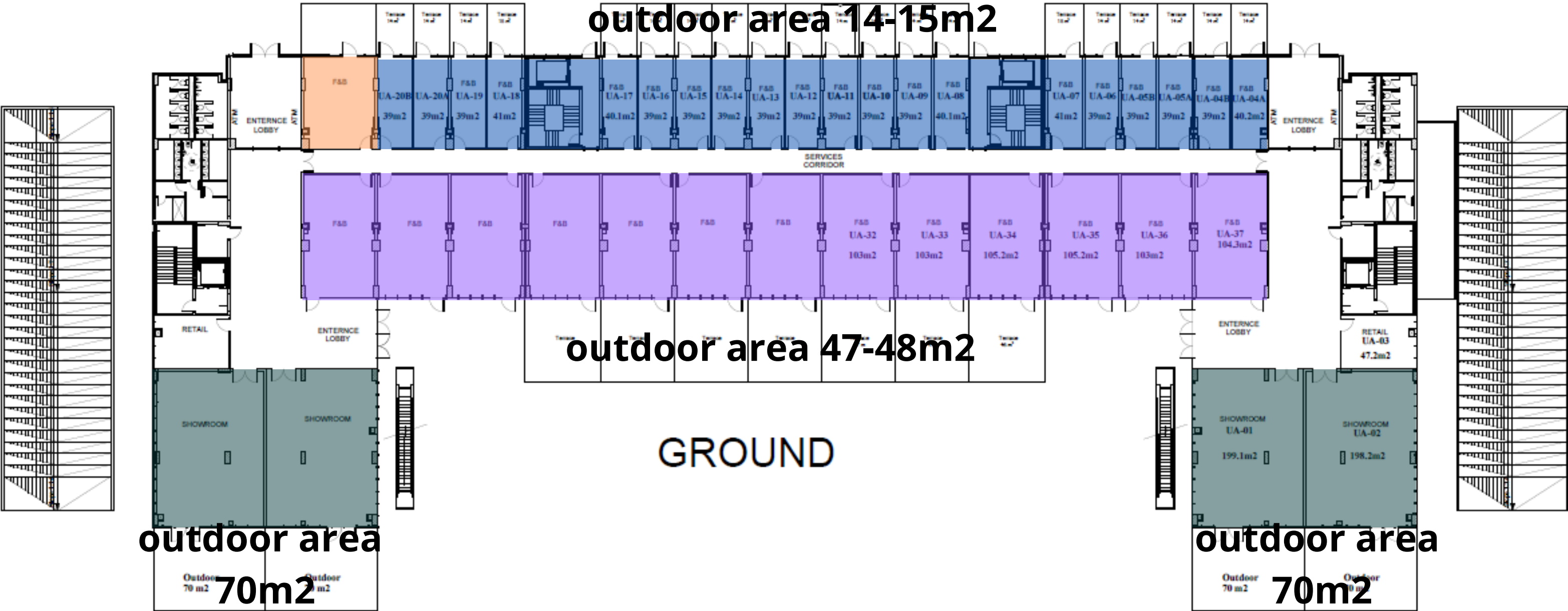
- **Udora's Floor Plans**

- | | |
|----------------|---|
| • Ground Floor | • Cafe's, Restaurants, and retail shops |
| • First Floor | • Retail Shops |
| • Second Floor | • Retail Shops |
| • Third Floor | • Retail Shops |
| • Fourth Floor | • Food Court |
| • Fifth Floor | • Casual Dining Restaurant |

- **Udora's Floor Area**

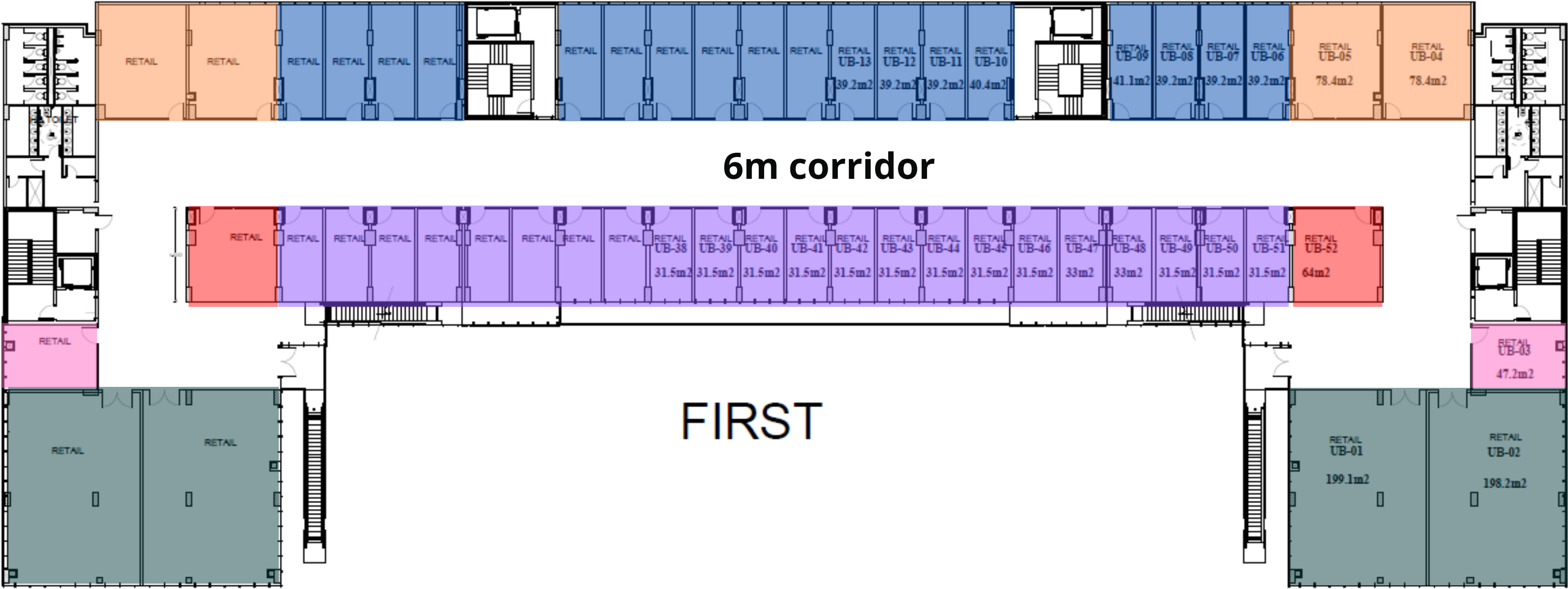
- | | |
|----------------|-----------------------|
| • Ground Floor | • 3,150m ² |
| • First Floor | • 3,257m ² |
| • Second Floor | • 3,194m ² |
| • Third Floor | • 3,149m ² |
| • Fourth Floor | • 2,942m ² |
| • Fifth Floor | • 2,945m ² |

• Unit Dimensions



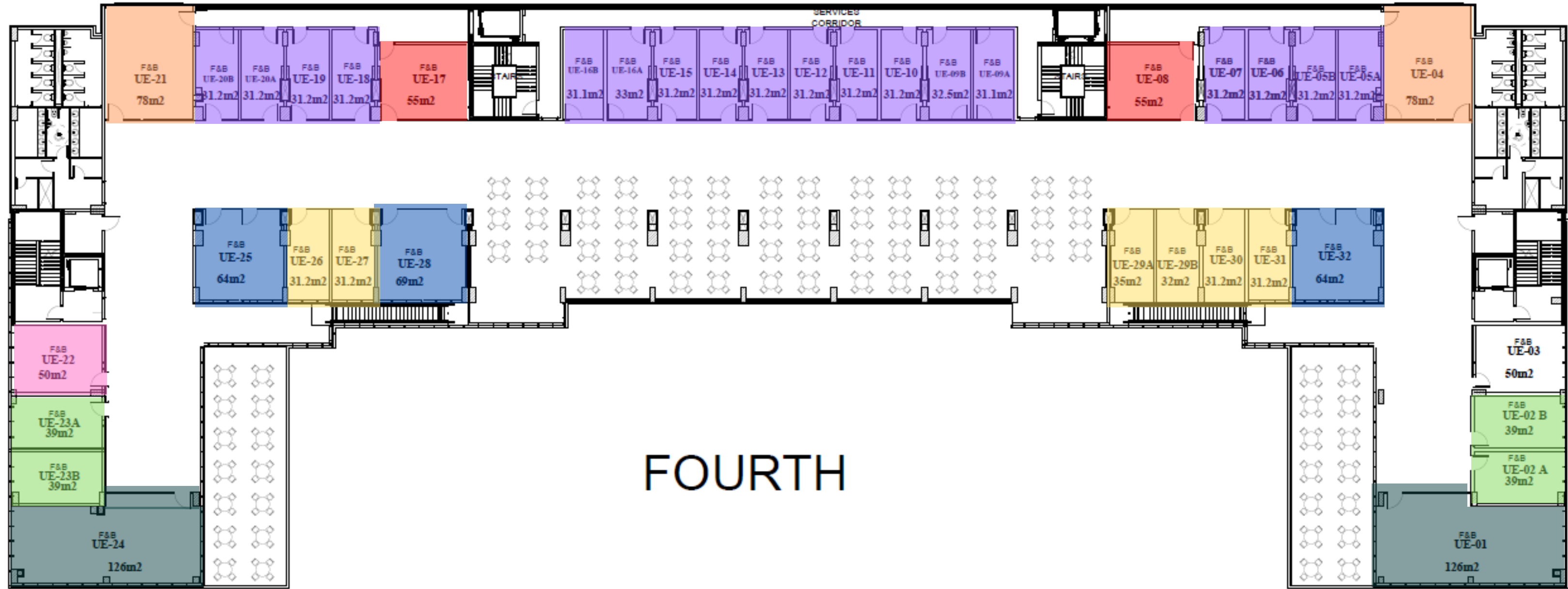
- 13.8mx9.8m
- 10.85mx6.4m
- 8.2mx3.2m
- 8.2mx6.5m

• Unit Dimensions



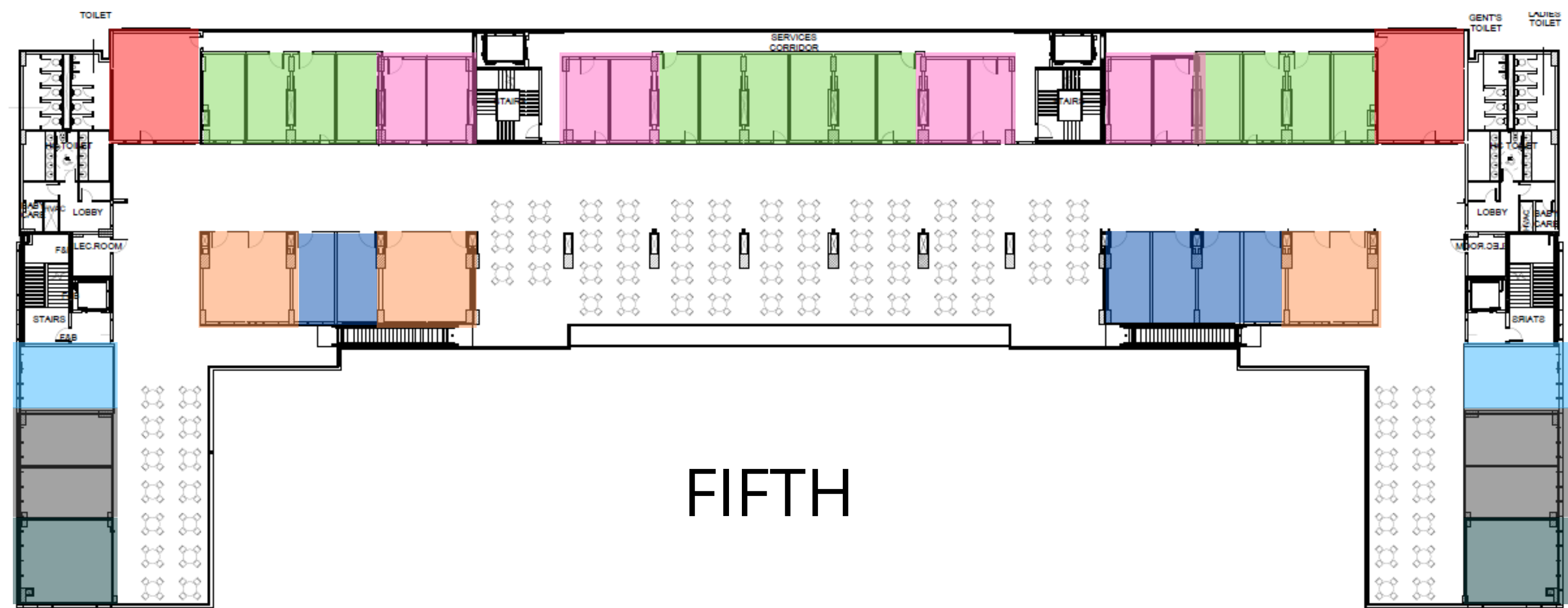
- 13.8mx9.8m
- 6.65mx3.2m
- 8.2mx3.2m
- 8.2mx6.4m
- 6.65mx6.5m
- 6.65mx4.8m

• Unit Dimensions



13.67mx5.75m	6.65mx3.2m
6.6mx3.2m	3.9mx6.7m
6.7mx6.5m	6.7mx5m
8.2mx6.4m	
6.7mx5.5m	

• Unit Dimensions



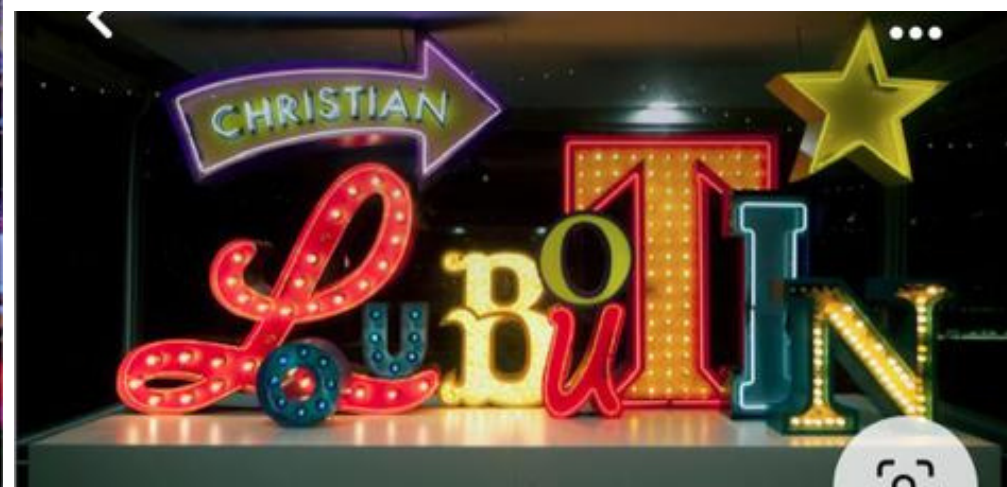
- | | |
|--------------|-------------|
| 6.5m x 6.15m | 6.2m x 3.3m |
| 6.7m x 6.5m | 6.8m x 3.8m |
| 8.2m x 6.37m | 6.8m x 4.8m |
| 6.6m x 3.2m | |
| 6.65m x 3.2m | |

- **Large units (above 60m and above)**

- Ground Floor
 - First Floor
 - Second Floor
 - Third Floor
 - Fourth Floor
 - Fifth Floor
- 18 units (UA01,UA02,UA21,UA23,UA24,UA25 to UA37)
 - 10 units (UB01,UB02,UB04,UB05,UB24,UB25,UB27,UB28,UB29,UB52)
 - 10 units (UC2,UC3,UC26,UC27,UC30,UC31,UC33,UC36,UC37,UC44,UC45)
 - 11 units (UD2,UD3,UD25,UD26,UD28,UD29,UD31,UD34,UD35,UD42,UD43)
 - 7 units (UE1,UE4,UE21,UE24,UE25,UE28,UE32)
 - 5 units (UF5,UF28,UF33,UF36,UF41)

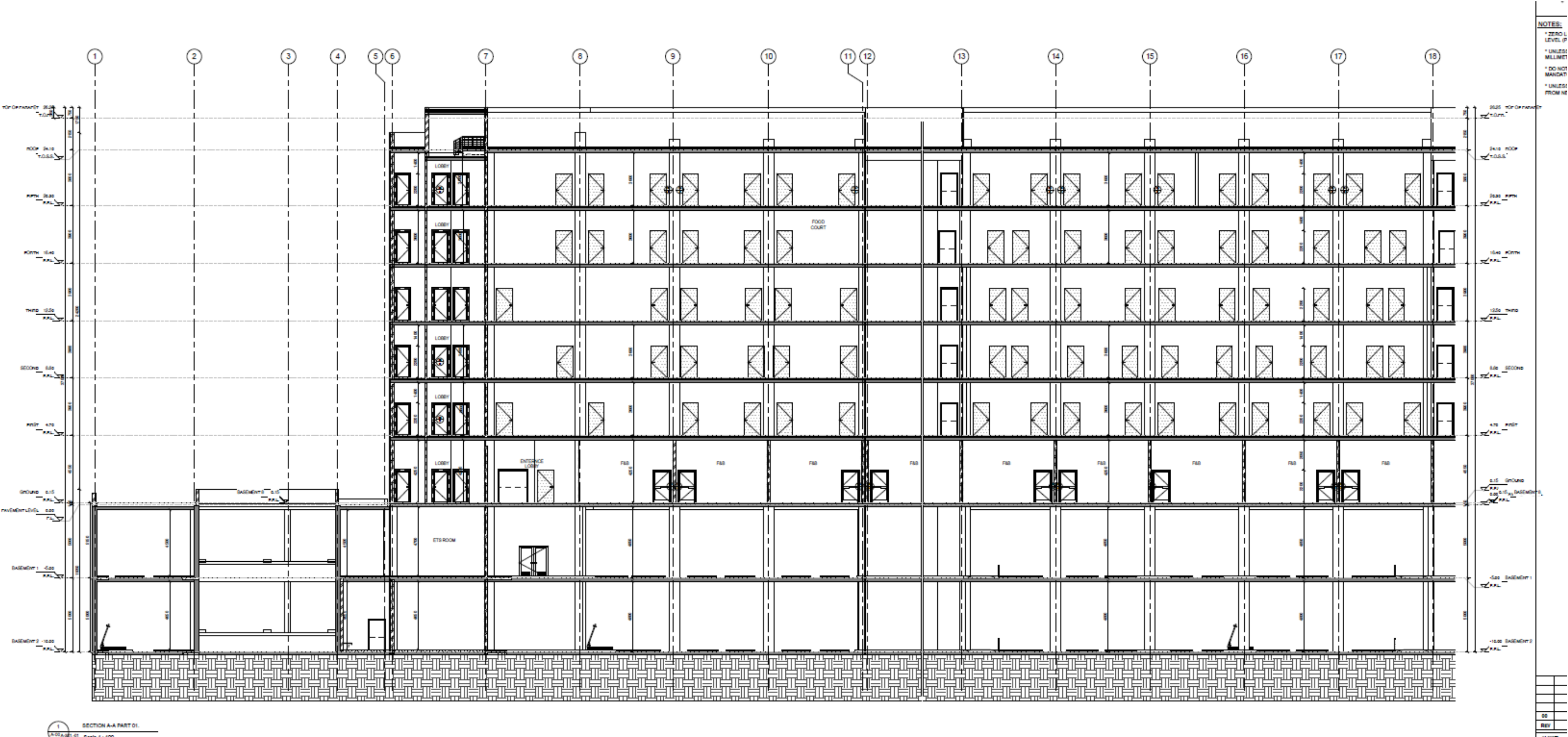
- **Fifth floor concept**

Casual dining restaurants

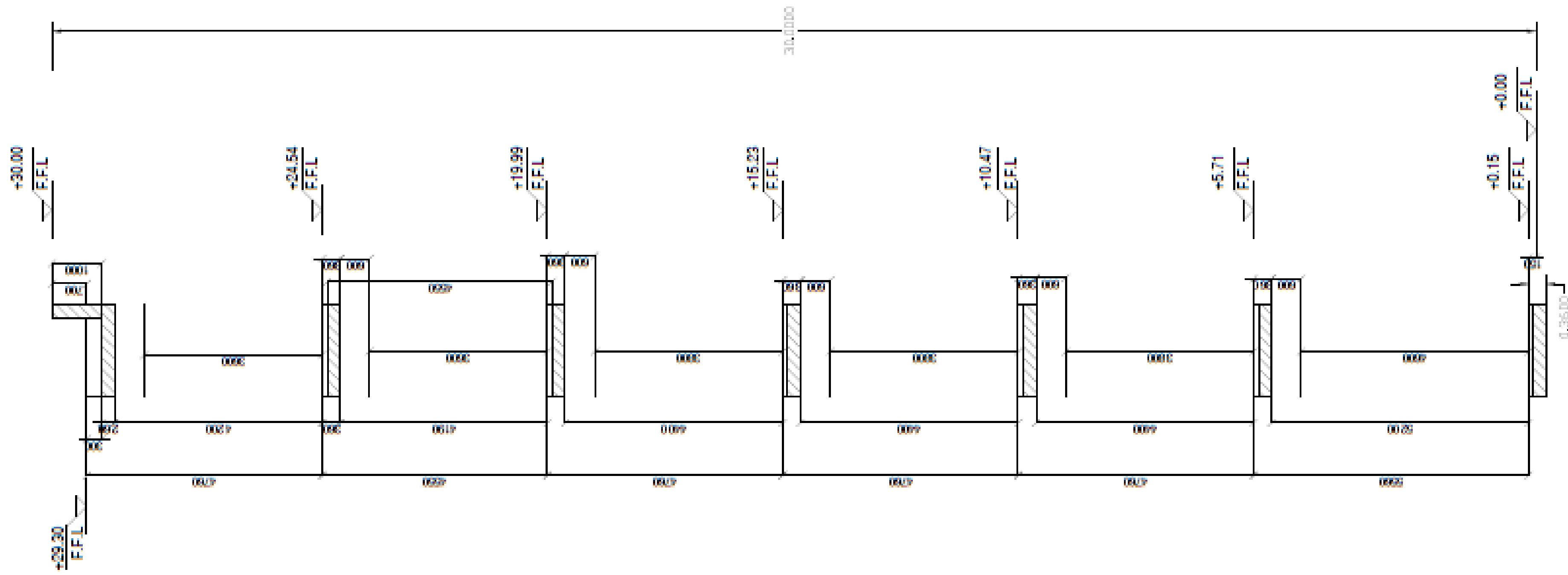


- Section Height

Total height=30 meters



- **Section Height**
Total height=30 meters



thank
you

Development Team