



# ONYX TOWER

New Capital

*& Downtown*

Doja Developments was founded in 2011. It is considered a remarkable real estate developer and investment company. Doja Developments expanded its investments and projects quickly which made it become one of the most renowned real estate companies in Egypt with its spectacular project ONYX Tower.

ONYX Tower is an unbeatable integrated complex, located at one of the very unique locations of the new administrative capital. The project offers luxurious administrative, commercial and medical units, provided with world class standards matching every investor's criteria.

*About*  
**DOJA**  
Developments

ONYX TOWER

The success of ONYX Tower made it one of the most attractive complexes in the new administrative capital. ONYX Tower is considered another thrilling design to reflect the company's outstanding design capabilities and quality oriented results.

Doja's investments also expanded to reach Mansoura, where the company originated and where its second office is located, in addition to Cairo's headquarters. The company owns a number of administrative, commercial, and residential towers at some of the top landmarks in the whole governorate.

*About*  
**DOJA**  
Developments

*About*  
**ONYX  
TOWER**

ONYX Tower offers a range of features that cover every possible need; including security, air conditioning, parking, IT, entertainments, and sports.

This makes every guest's visit enjoyable as it makes sure everything is only a few steps away within the complex.

ONYX tower offers a level of luxury experience matching its guest's expectations to ensure an unforgettable visit.



# ONYX TOWER

SITE  
LOCATION

*Map*





# ONYX DOWNTOWN TOWER Location



# DESIGN

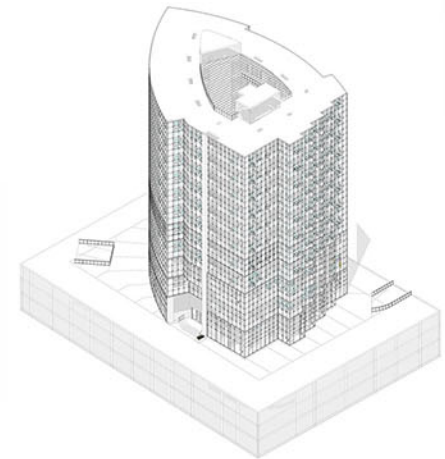
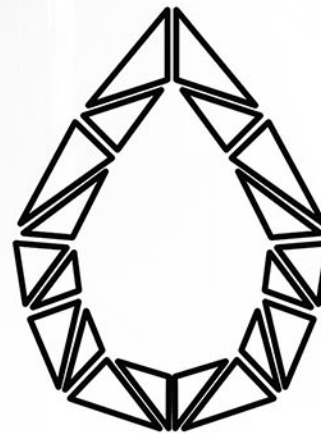
## *Philosophy*

## ARCHITECTURAL

### *Concept*

Onyx is a gemstone. Many colors, where whiteness intersects with yellow, red and black colors, often has a rectangular shape, which is environmentally friendly in composition.

Its names include: onyx - onyx - onyx - onyx in kind - onyx Dhofar



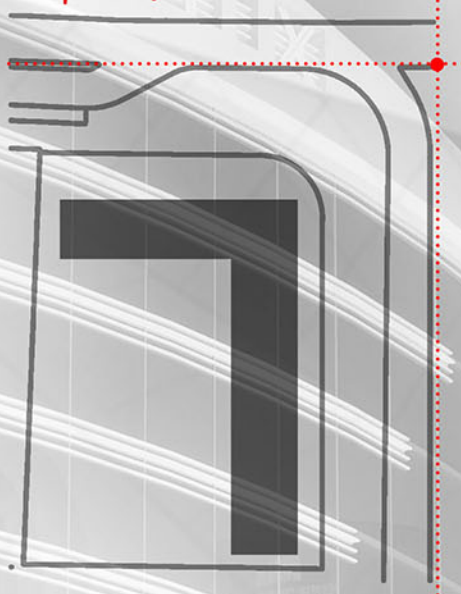


# DESIGN

## Phylosophy

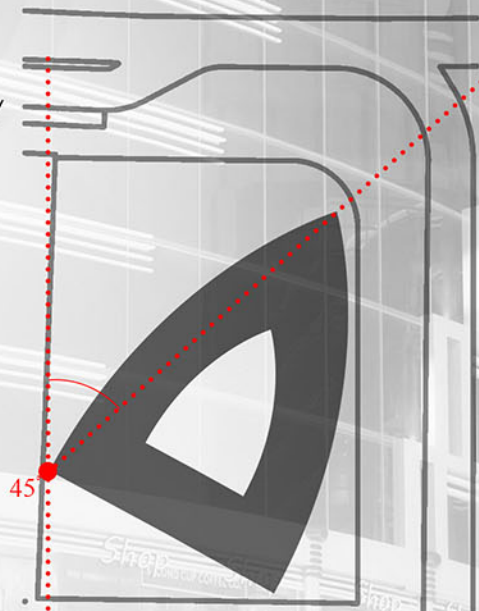
01

First, the default form shape was to use the two sides overlooking the main streets to make the form shape identical to L shape .



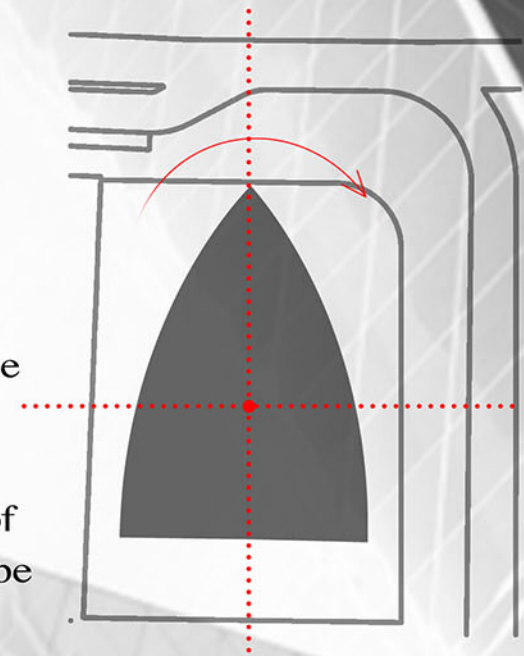
02

Then, we got to study the visual vision for each unit separately, and then the building was rotated at an angle of 45 to increase the number of units overlooking the main street and the Masjid Misr.



03

After studying the general location and the important visual determinants of the area, thinking tended to increase the number of units overlooking the streets . This was to convert half of the block into an oval shape

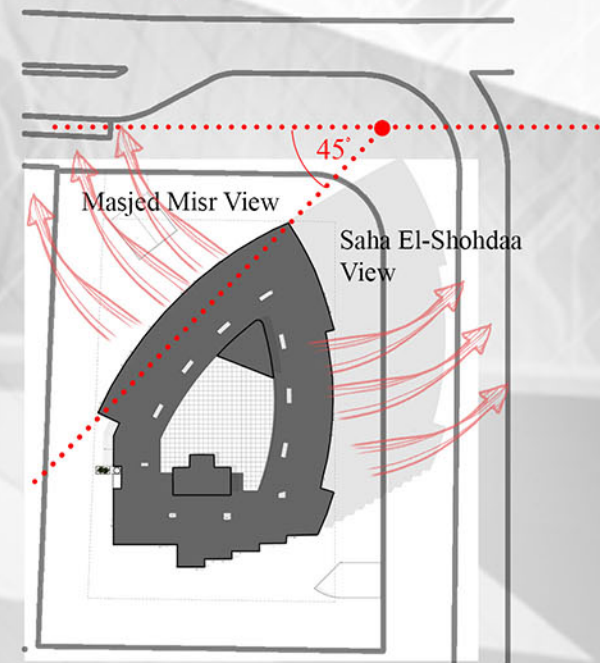


04

Finally, the best results were to achieve the highest utilization of directing the units,

- which was to have one of the two ribs tilted at an 45 and directed towards the 50 m street & the Masjid of Egypt.
- The other is almost parallel to the 30 m street, directed towards Saha El-Shohdaa & 50 m street

The rear rib is graduated to integrate the view between the rear parking area & the 30m Street .



DESIGN

*Perspective*





# DESIGN

*Prespective*



# DESIGN

*Prespective*



# DESIGN

*Prespective*



# DESIGN

*Perspective*



# DESIGN

*Perspective*





# DESIGN

*Perspective*



C N Y X



DESIGN

*Perspective*

# ONYX TOWER *Facilities*



SECURITY



PARKING AREA



SKY LOUNGE



CENTRAL AIR  
CONDITONER



FIRE ALARM  
SYSTEM



CONFERENCE  
ROOMS



MEETING ROOMS



RESTAURANT



ELEVATORS



INFINITY POOL



SOLAR ENERGY



SMART UNITS



BUSINESS  
CENTER



ELECTRICITY  
GENERATORS



HIGH SPEED  
INTERNET

# ONYX TOWER FLOOR *Plans*

Ground, first and second floors include: Restaurants, Cafes, Banks, pharmacies and Shops.


Fourth, fifth and sixth floors include: Air conditioned and fully furnished Clinics.

Seventh, eighth and ninth floors include: Air conditioned fully furnished administrative offices.


Roof includes: The Sky Lounge and Infinity Pool.

# GROUND Floor

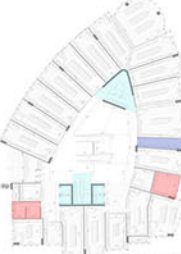
**LAYOUT**



**3D KEY**



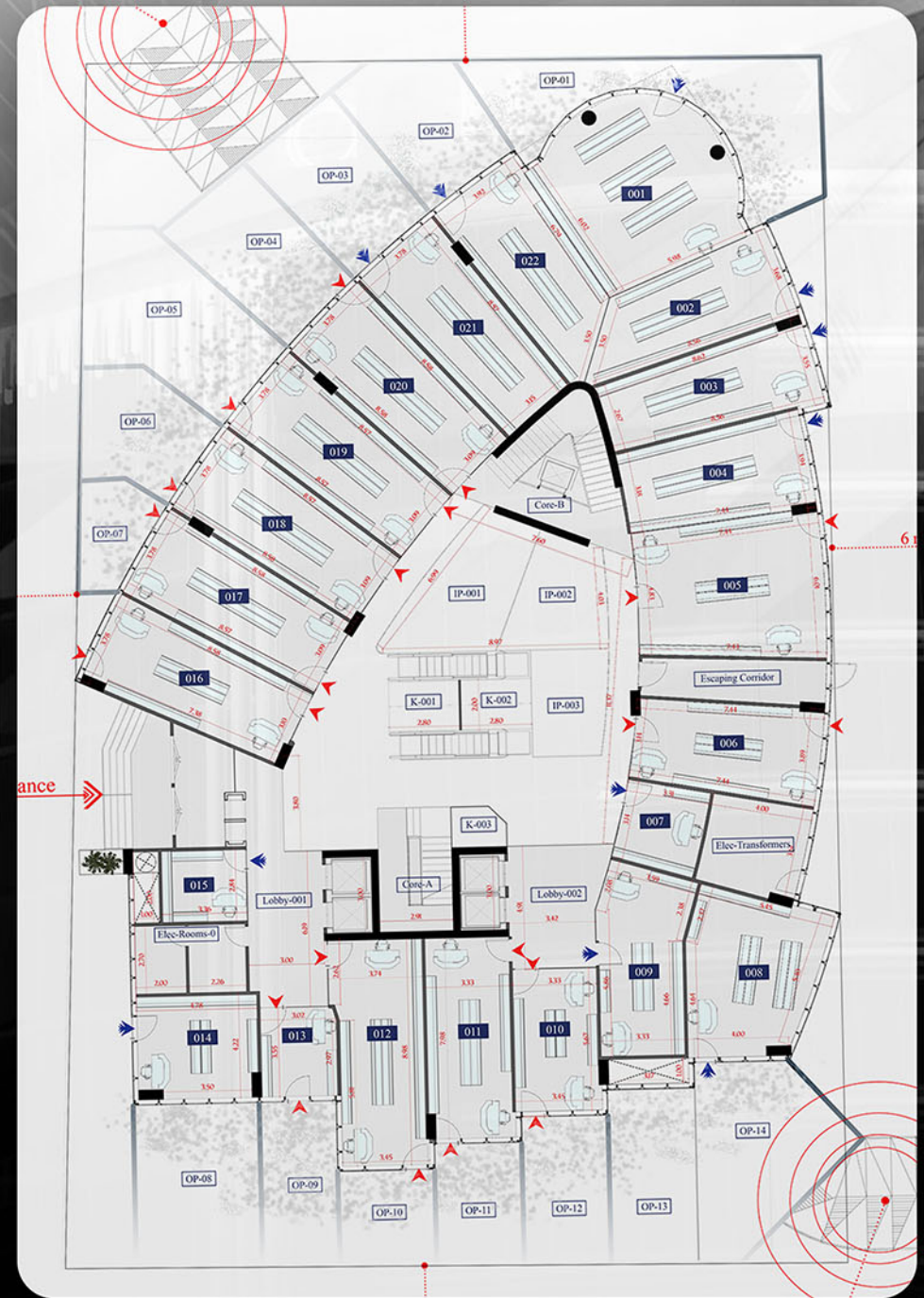
**SPACES KEY**



Vertical Circulation  
Lifts  
Escaping Corridor

**SAMPLES KEY**

Sample A	Sample I	Sample Q
Sample B	Sample J	Sample R
Sample C	Sample K	Sample S
Sample D	Sample L	Sample T
Sample E	Sample M	Sample U
Sample F	Sample N	Sample V
Sample G	Sample O	Sample W
Sample H	Sample P	



# FIRST Floor

**LAYOUT**



**3D KEY**



**SPACES KEY**



**SAMPLES KEY**




Sample A	Sample G
Sample B	Sample H
Sample C	Sample I
Sample D	Sample J
Sample E	Sample K

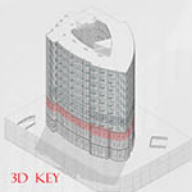


# SECOND *Floor*

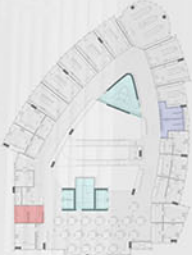
**LAYOUT**



**3D KEY**




**SPACES KEY**

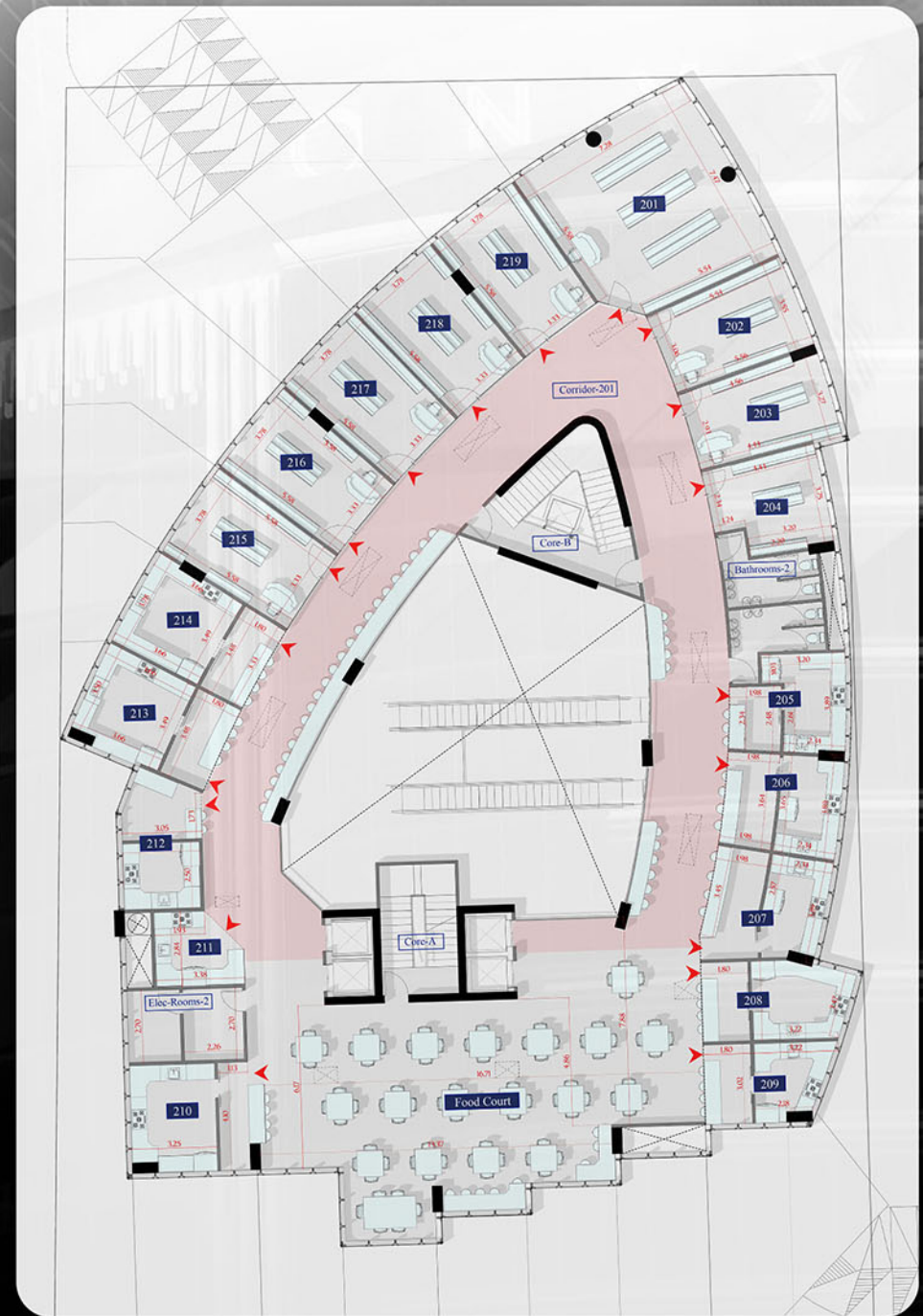


Bathrooms ■  
Vertical Circulation ■  
Utilities ■

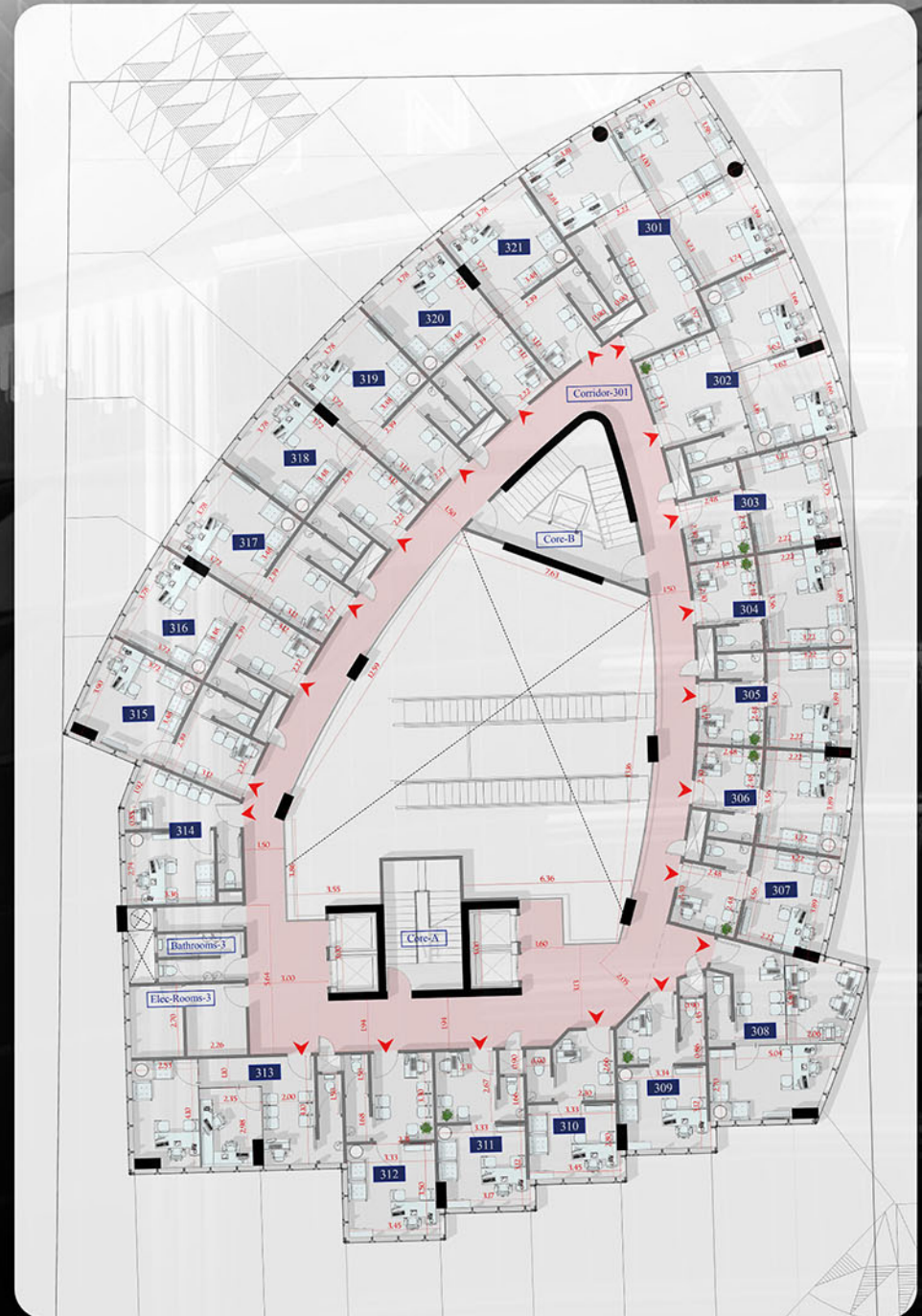
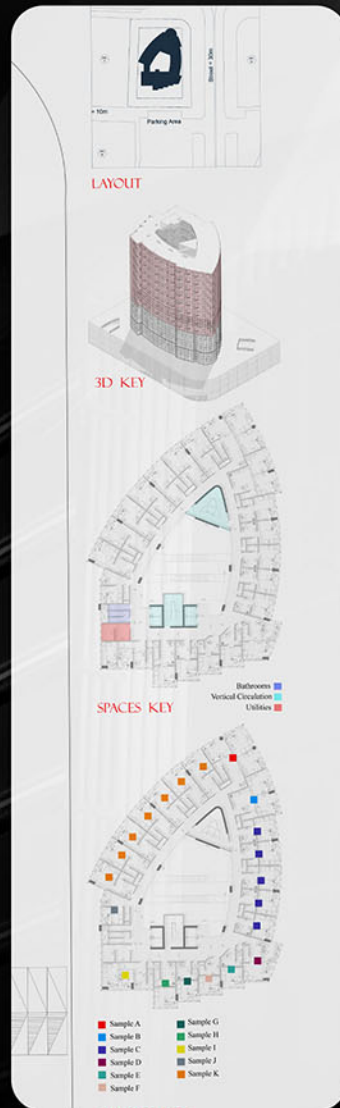
**SAMPLES KEY**



■ Sample A	■ Sample H
■ Sample B	■ Sample I
■ Sample C	■ Sample J
■ Sample D	■ Sample K
■ Sample E	■ Sample L
■ Sample F	
■ Sample G	



# ADMINISTRATION *Floor*



# ONYX TOWER

*Consultants*

## OUR *Partners*



## MARKETING *Partners*





DOJA  
Developments



ONYX  
TOWER

19674

[www.dojadevelopments.com](http://www.dojadevelopments.com)