

skybridge

Signature Hub

COMMERCIAL - ADMINISTRATIVE

TABLE OF CONTENT

- 01 ABOUT AFG
- 02 ABOUT SKYBRIDGE
- 03 PROJECT LOCATION
- 04 PROJECT FACILITIES
- 05 PROJECT FLOOR PLANS
- 06 CONTACT US









CHAIRMAN MESSAGE

Egyptians have been fond of property purchase especially for investment needs, as for years the value of properties have increased due to the high demand for one fact.

For 35 years, we have been part of the customer journey where our communities have been tailored to suit our client's needs.

In an ever growing market, we are highly focused on utilizing our resources to carry out the most attractive investment opportunities.

We strongly believe that only through the full commitment and high level of professional integrity we will achieve our long-term goals.

One of our key concepts was developing real value. After the success of AMAZ Business Complex, our first mixed-use commercial project in the New Capital, we have embarked on a new mission in setting a new benchmark for innovation and investment by launching SkyBridge Signature Hub.

On behalf of AFG team,

Salah AlDin AlHelaly



About
AFG
ALFATH GROUP



Al-Fath Group - AFG - is one of the leading real estate companies that has proved a successful track of developing communities for 35 years. With its extensive history, as the company is an alliance of a group of real estate and economical companies.

AFG seeks to take the Egyptian real estate market to a smart new direction through a futuristic approach and bold history.

From Saudi Arabia to Egypt, the group has successfully operated in the domestic market's major cities including New Cairo, New Heliopolis City, and New Capital opening the future for investors and meeting residents' aspirations.

And in a flash, AFG has attracted a large segment of clients from different countries making it a pioneer in the Egyptian real estate market.



About
skybridge
Signature Hub

skybridge

Signature Hub

Crafting A Signature Future



Since its inauguration, the New Administrative Capital is planned to be a momentous endeavour to build national spirit, foster future investments and play a role in international trade.

The new city is located 45 Km east of Cairo on the way to the port city of Suez, where the plan is to develop a smart city with progressive infrastructure and modern technology making it a global investment destination.



skybridge
Life Hub

skybridge
Life Hub

Project

Location

skybridge

Signature Hub

skybridge

Signature Hub

Project Location



THE NEW ADMINISTRATIVE CAPITAL

A city that competes with global cities in providing the best and various services to its residents, Having a prime location with a total of 170,000 acres equivalent to the land area of Singapore.

Expecting 40 million people to be living at New Capital by 2050.

Its prime location makes it very convenient as it is located between Suez Road, Ain El Sokhna road and The New Ring Road.

skybridge

Signature Hub

Project Location



So **AlFath Group - AFG** - Decided to launch Skybridge SignatureHub at a specialized location in the heart of the **DOWNTOWN**, The New Administrative Capital, With Triple Panoramic View.

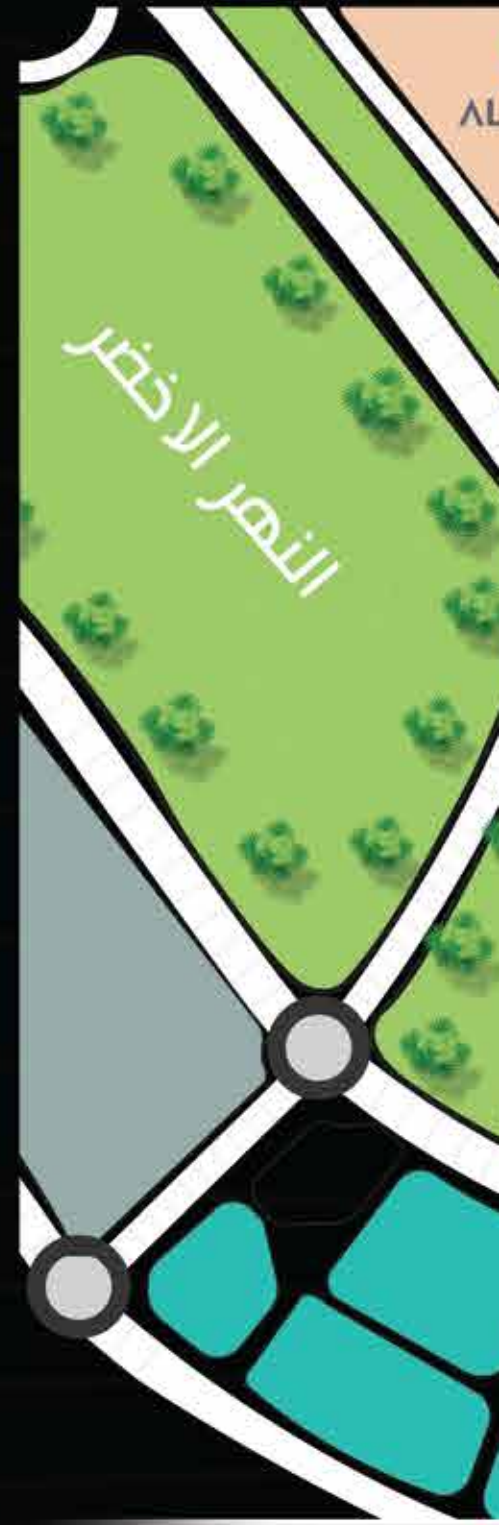
- Few steps from The Green River and Mohamed Bin Zayed Axis.
- Only one minute from The New Museum.
- 10 Minutes from the governemental district, The business district and the presidential palace.
- 2 Minutes from Al'Masa Hotel and The International Exhibitions Center.
- 4 Minutes from The Opera House and The Central Monorail Station
- 4 Minutes From Egypt Mosque, The City Of justice, The Parliament and The Gold Market.

skybridge

Signature Hub

DOWNTOWN

NEW CAPITAL





AFG
ALFATH GROUP

Project
Facilities

skybridge

Signature Hub

FIRST SKYBRIDGE LOUNGE
IN NEW ADMINISTRATIVE CAPITAL



WHERE WORK-LIFE BALANCE
PERFECTLY FIT UNDER ONE ROOF



SWIMMING POOL



KIDS AREA



CAFES & RESTAURANTS

skybridge



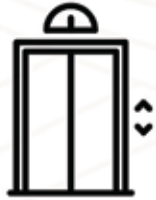
SKYBRIDGE GYM & SPA



ENJOY WORK ENVIRONMENT, STRESS FREE

We believe in the importance of having a healthy and fitful life and its benefits for the mind and providing more physiological comfort and relaxation to our customers, as it activates the mind, increases the strength and activity of memory, as it positively affects brain activity, so we created an integrated gym & spa.

PROJECT FACILITIES



**HIGH SPEED
ELEVATORS**



CCTV



**FACILITY MANAGEMENT
SYSTEM**



**ACCESS
CONTROL**



**FIRE FIGHTING
SYSTEM**



**BUILDING
MANAGEMENT
SYSTEM**



**ELECTRICITY
GENERATORS**



**SOLAR
ENERGY**



**HANDICAPPED
FRIENDLY**



WI-FI



BUSINESS CENTER



**CENTRAL
SATELITE**

PROJECT FACILITIES



**WAITING
AREA**



CENTRAL A/C



**PROPER REST
ROOMS**



**WATER
FEATURES**



**DATA
CENTER**



PARKING



**INFORMATION
DISK**



**24/7
SECURITY**

Project
Floor Plans

skybridge

Signature Hub

GROWING YOUR BUSINESS HAS NEVER BEEN EASIER



Restaurants and cafes with various areas in addition to outstanding sustainable modern outdoor areas, carefully designed for all preferences, family gatherings and business meetings, for a promising economic future. Also, the tower's prime location makes it very attractive to international brands



SHOP

SHOP

SHOP

SHOP

SHOP

SHOP

SHOP

SHOP

SHOP

SHOP

Ridge
Hub

GROUND FLOOR PLAN



FIRST FLOOR PLAN



WHERE ALL PROFESSIONAL BUSINESSMEN SHOULD BE .. SKYBRIDGE IS THE ULTIMATE DESTINATION FOR YOUR BUSINESS.

Administrative Offices With Various Areas

FULLY FINISHED ADMINISTRATIVE OFFICES WITH AC'S

Smart solutions for business owners and investors looking to capitalize the stability of the office market, or business owners seeking for new office spaces for their businesses with exceptional facilities and various unit areas.



ADMINISTRATIVE UNITS

AFG selected The New Administrative Capital to be its project location "Skybridge Signature Hub" that will witness splendid success among the worlds' capitals.

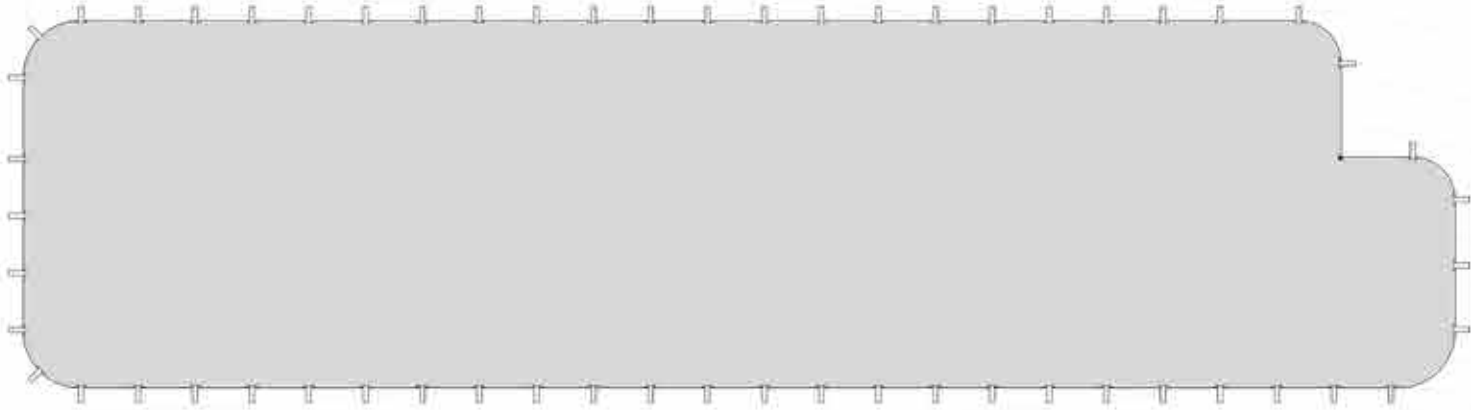
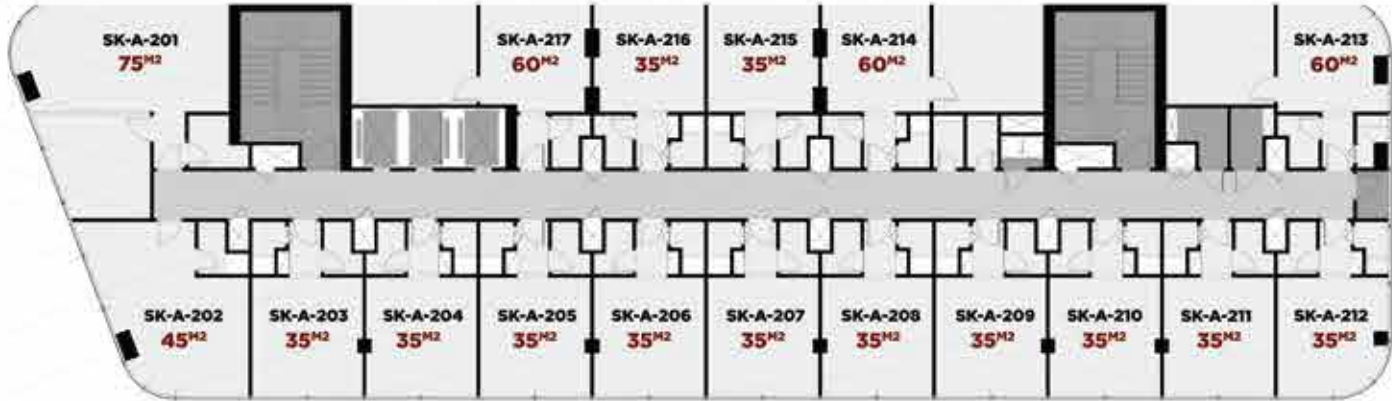
Sky Bridge Signature Hub Administrative building in the Downtown district center situated a closely to New Capital focal landmarks, offering connectivity without traffic or parking difficulties.

Our administrative units are designed carefully to suit all your business goals as the unit dimensions are smart enough to seat as many seats as possible. With a separated entrance and two high speed elevators, You can access the administrative tower at ease to step into your fully finished office.

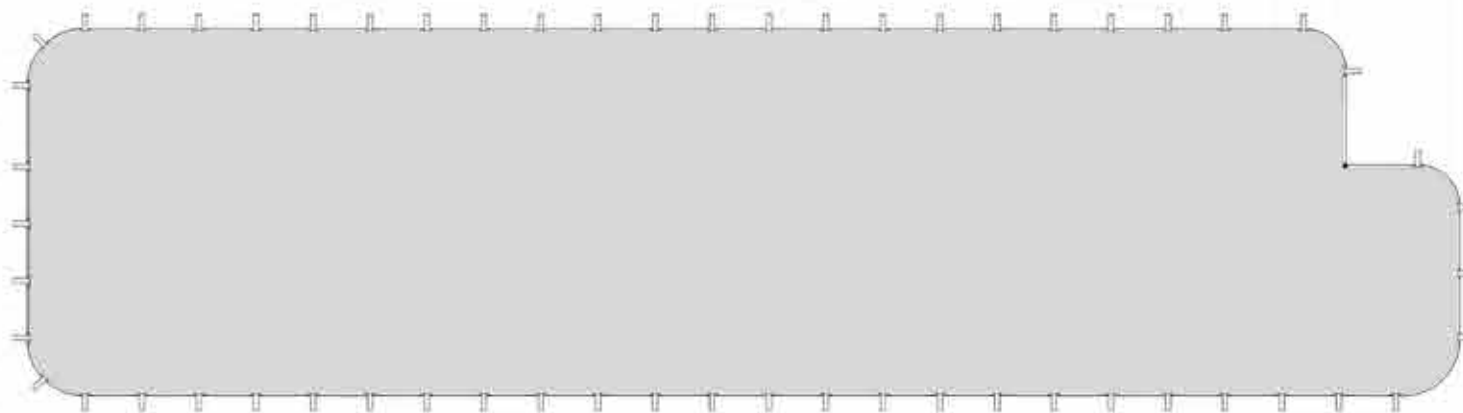
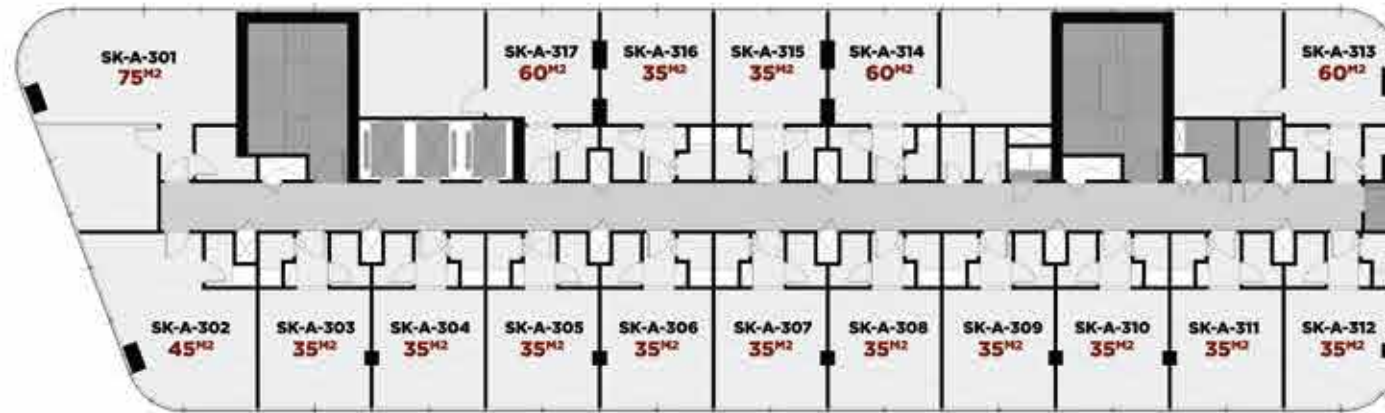
Also, We've invested in Skybridge by bringing MRB Consultation, Which will facilitate the Administrative Tower to ensure the highest degree of service provided to our clients.



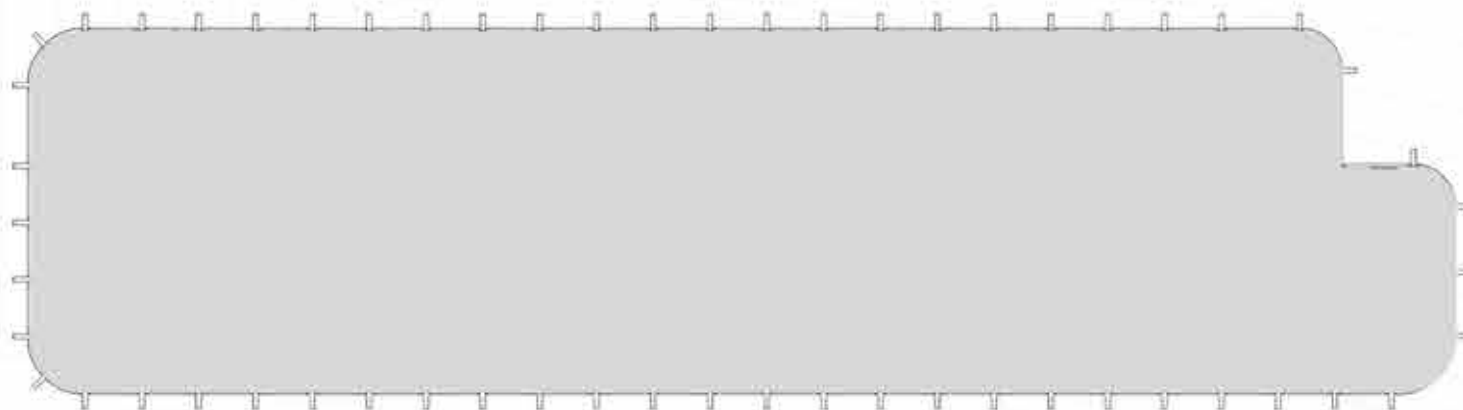
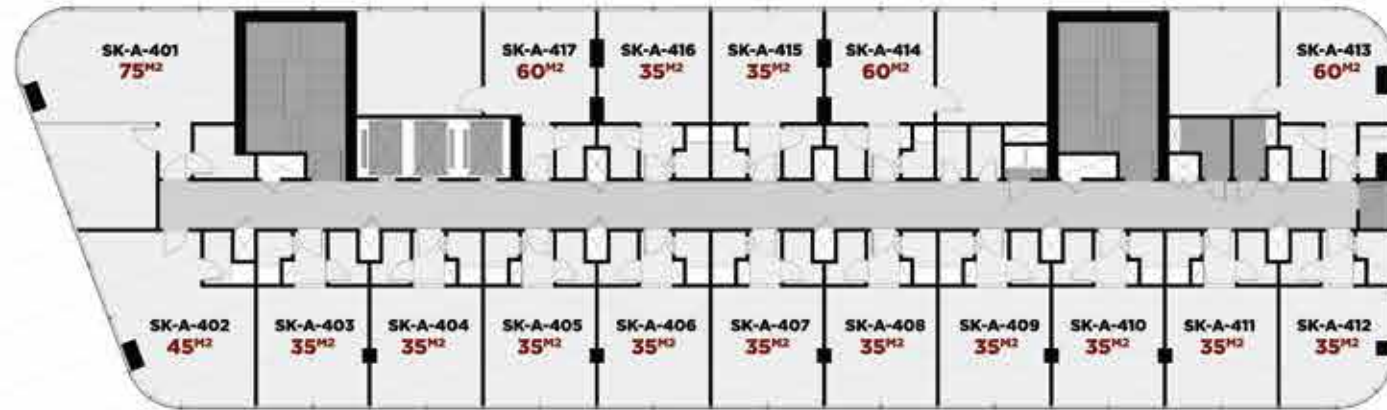
SECOND FLOOR PLAN



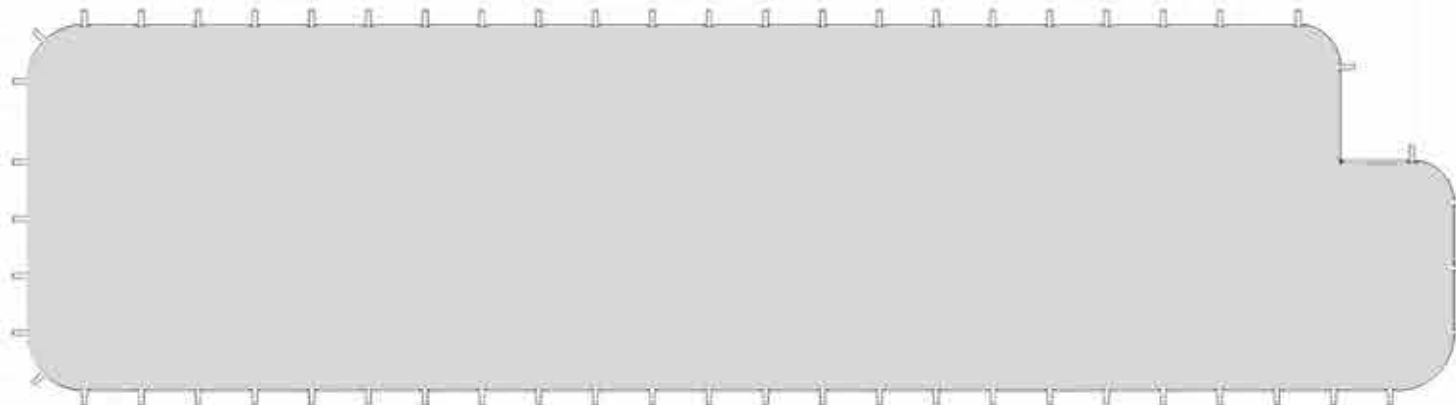
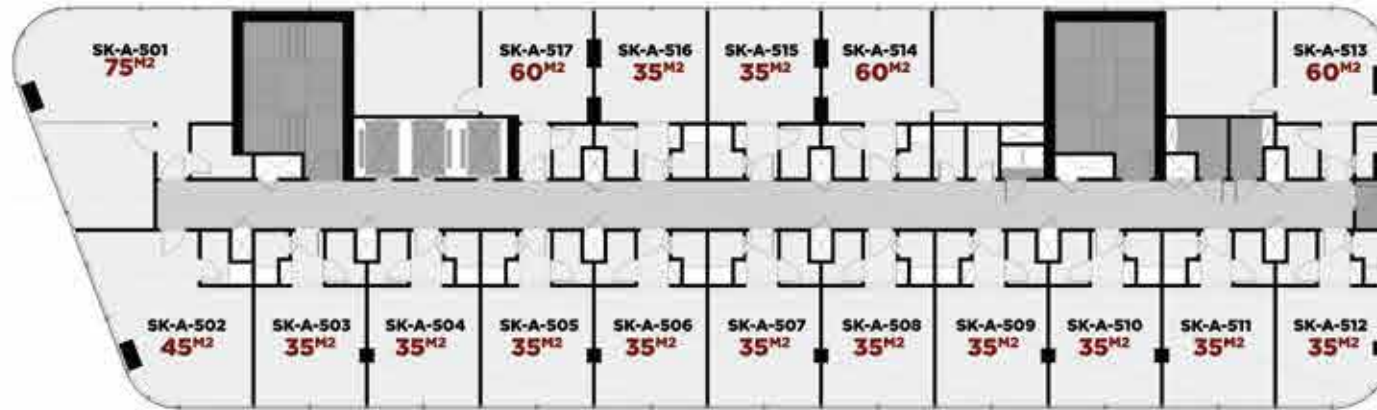
THIRD FLOOR PLAN



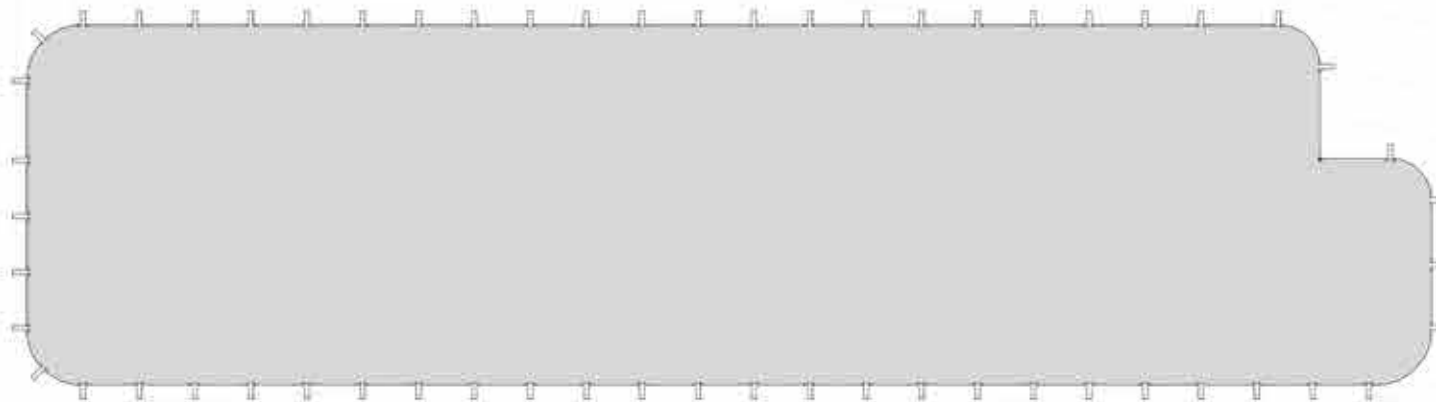
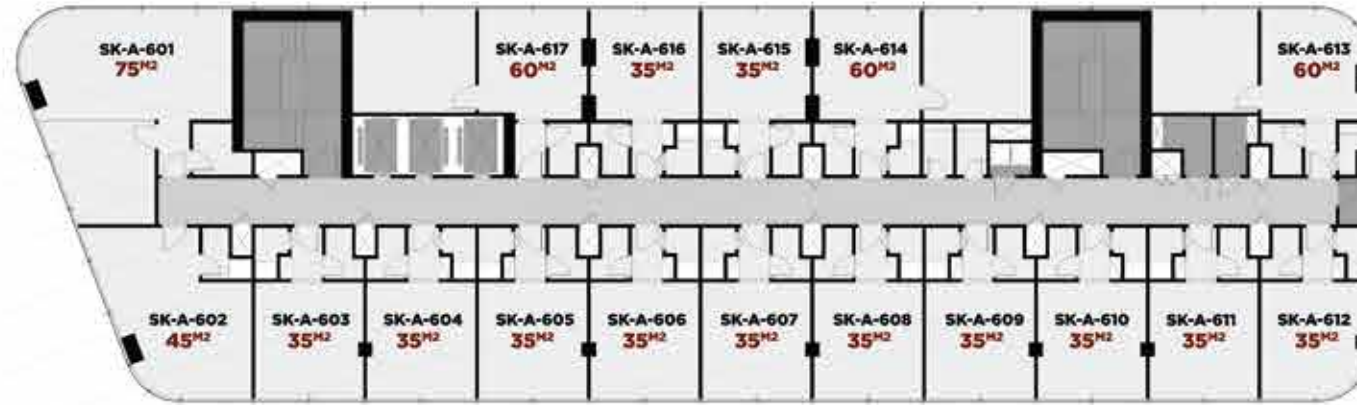
4TH FLOOR PLAN



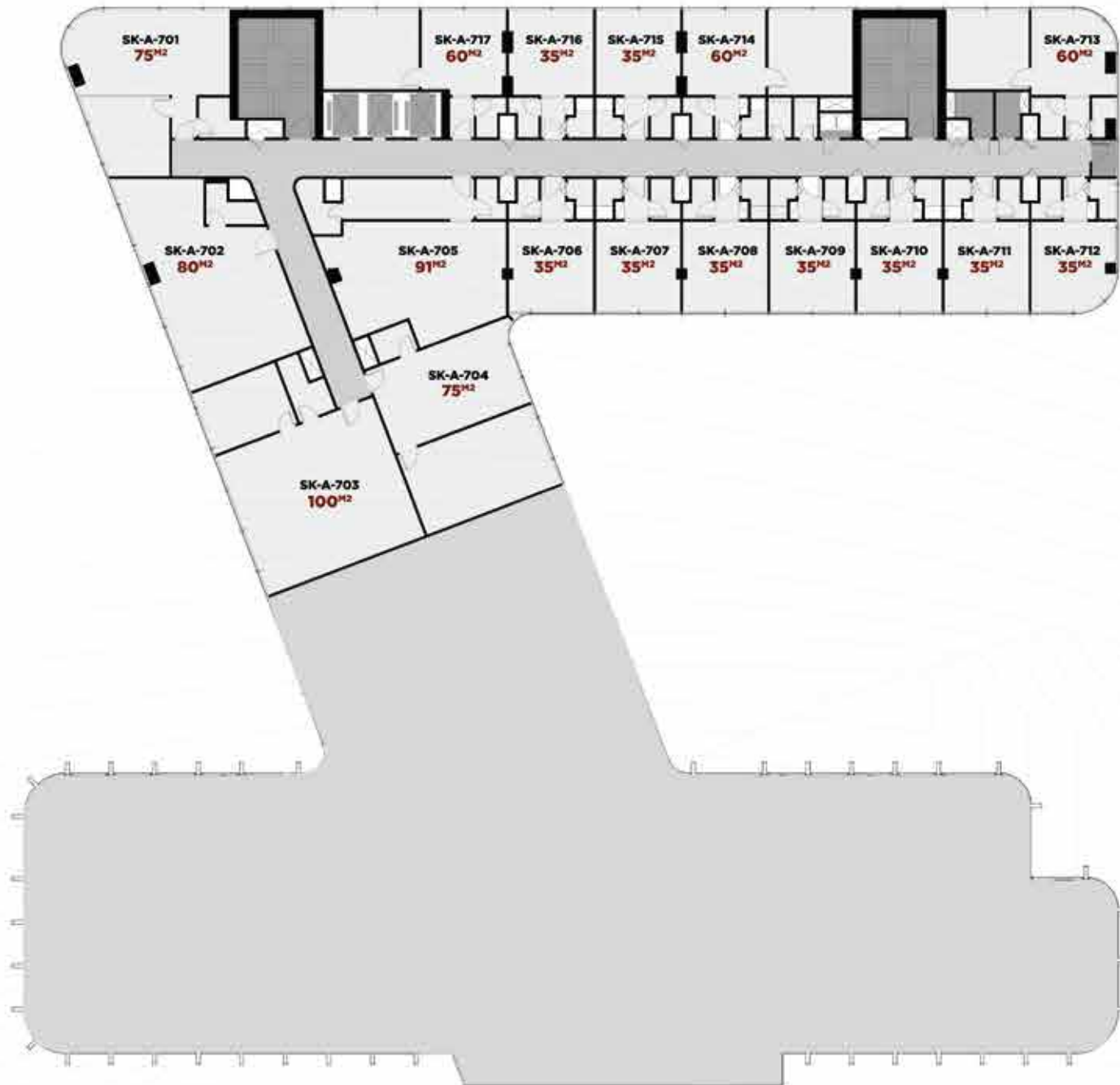
5TH FLOOR PLAN



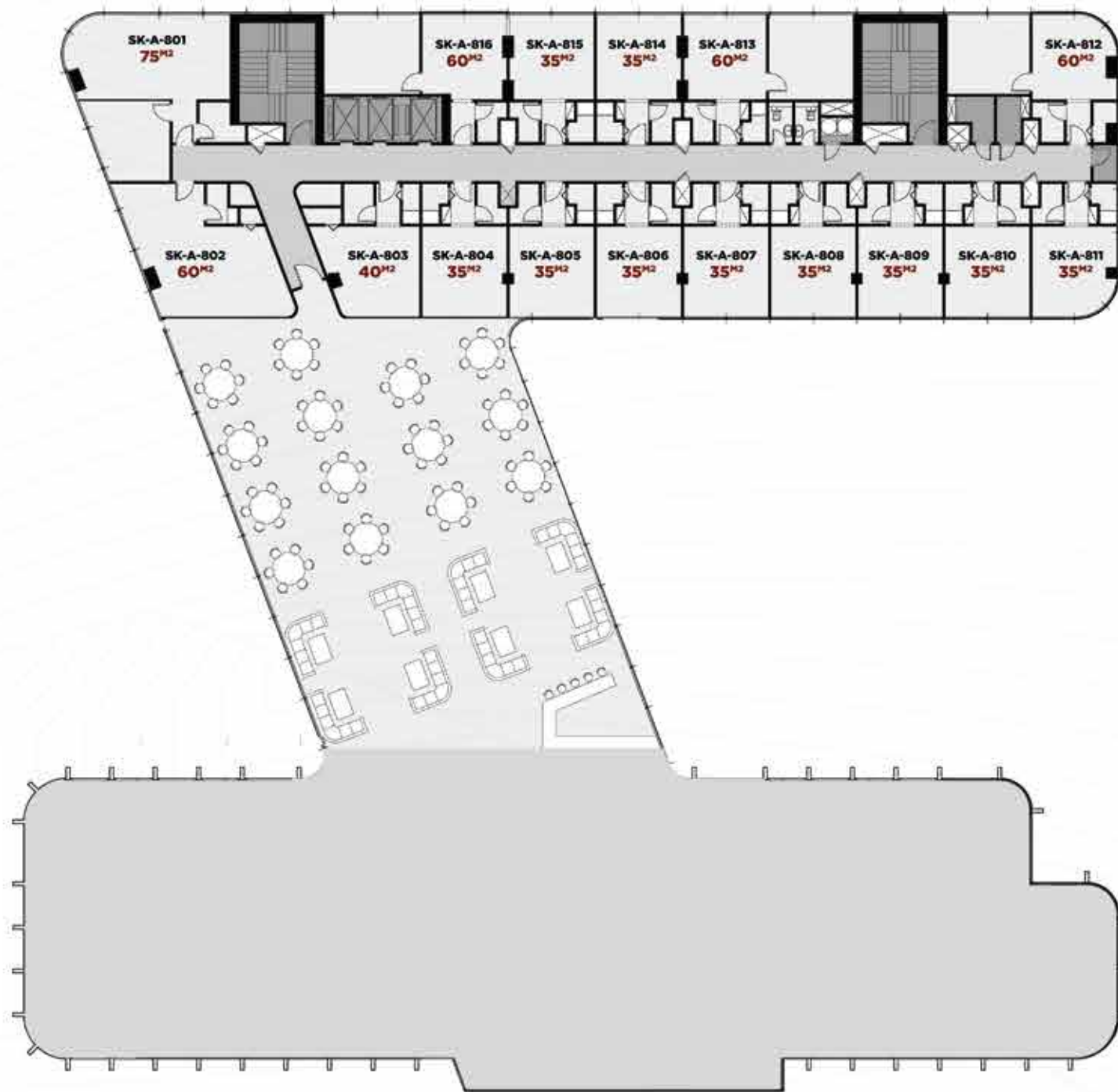
6TH FLOOR PLAN



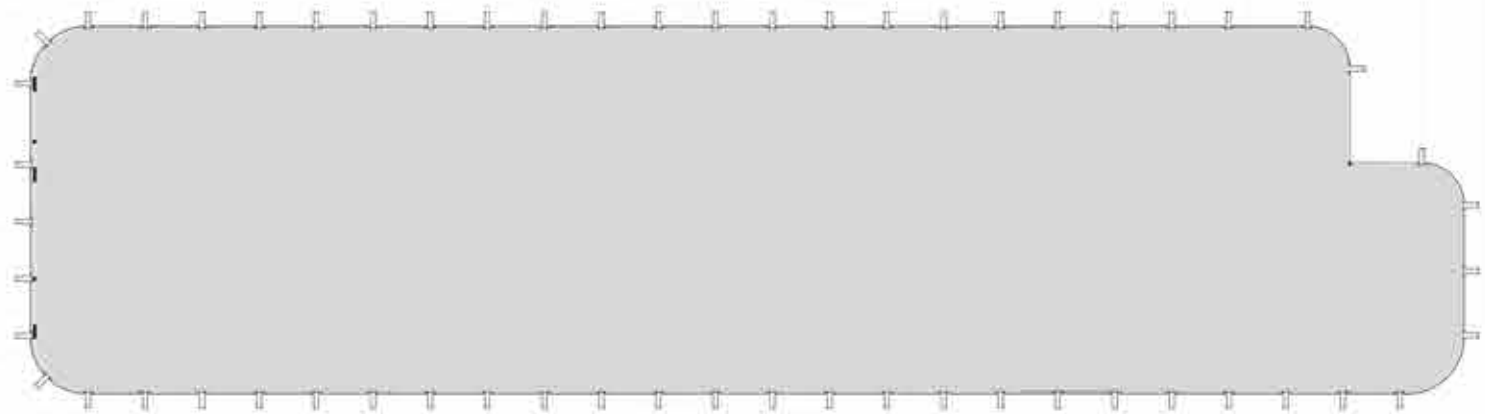
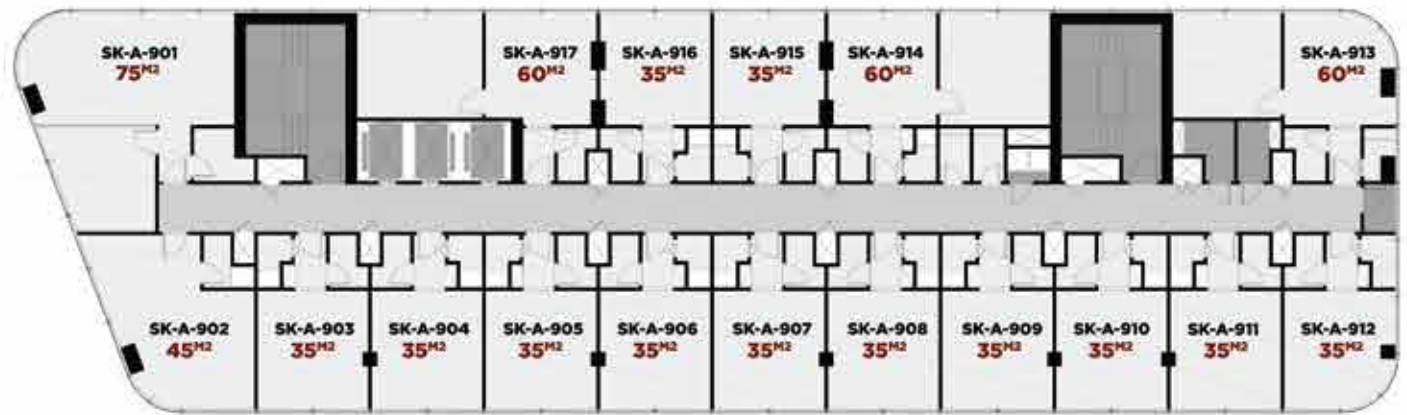
7TH FLOOR PLAN



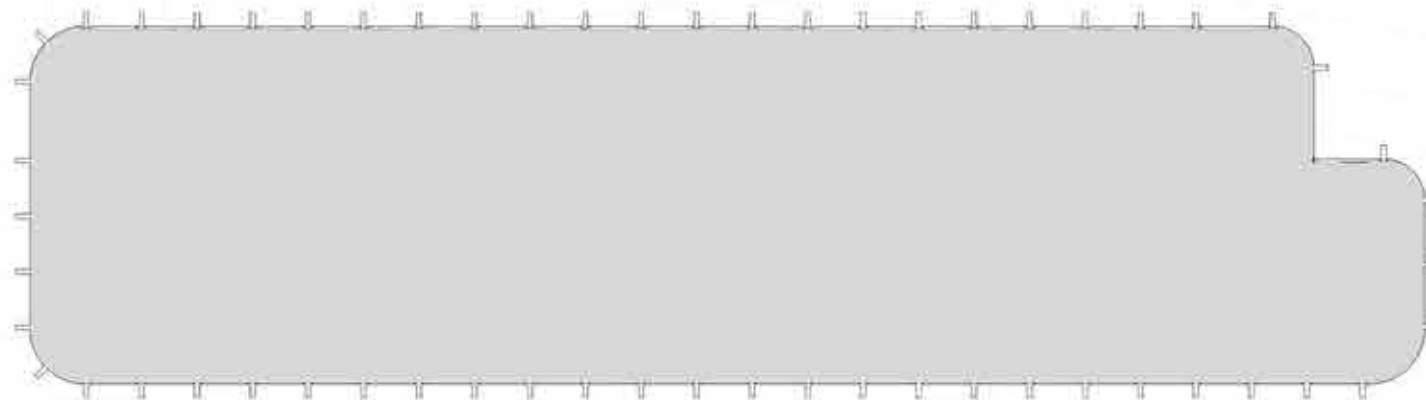
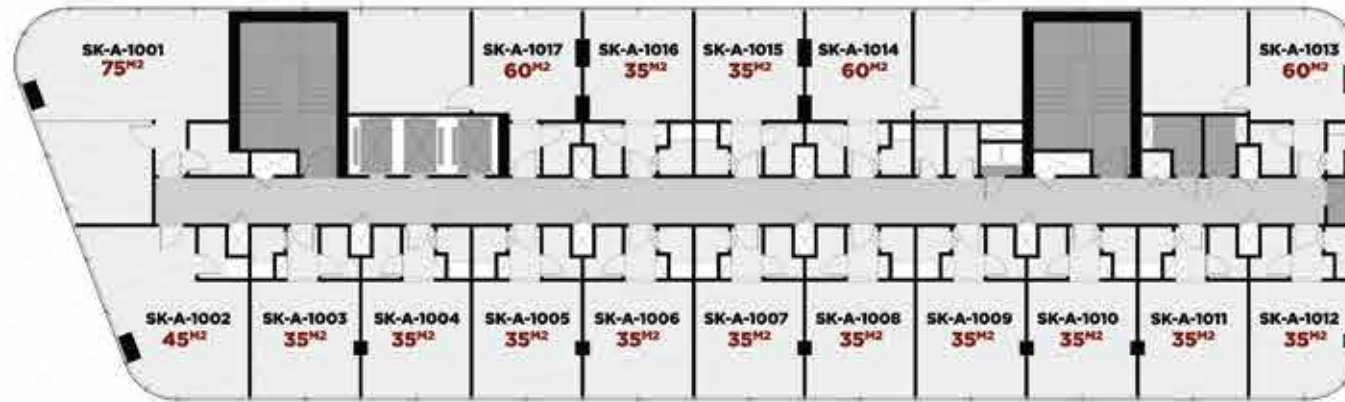
8TH FLOOR PLAN



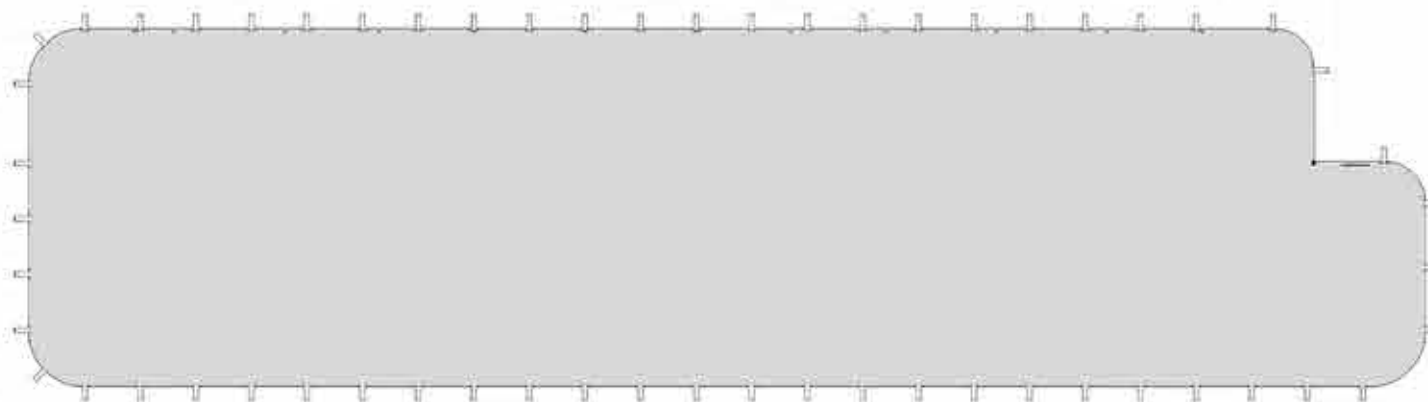
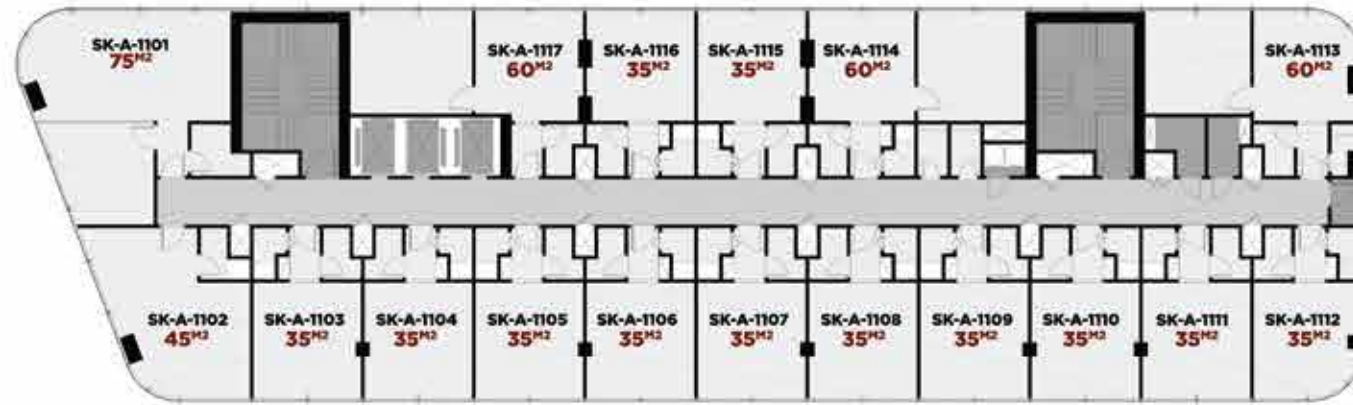
9TH FLOOR PLAN



10TH FLOOR PLAN



11TH FLOOR PLAN



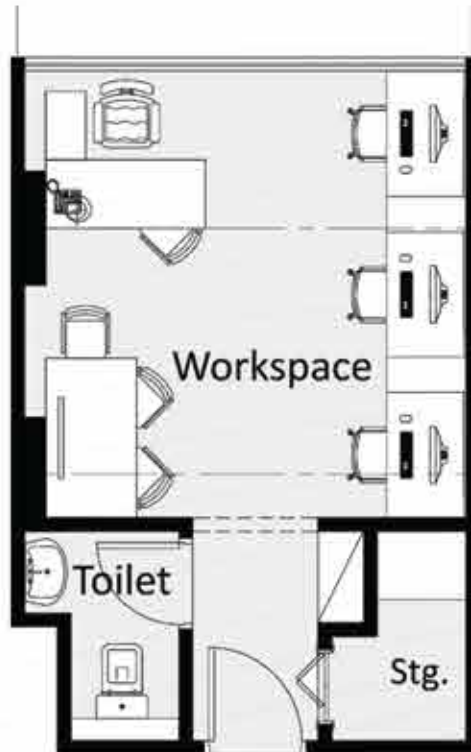
ADMINISTRATIVE TYPE D



TYPE D

Total Area	41.7m ²
workspace	3.8 X 3.9
Toilet	1.4 X 1.8
Office	3.9 X 3.9
Storage	1.1 X 1.8

ADMINISTRATIVE TYPE E



TYPE E

Total Area	24m ²
workspace	3.8 X 3.9
Toilet	1.4 X 1.8
Storage	1.2 X 1.8

ADMINISTRATIVE TYPE A



TYPE A	
Total Area	53.2m ²
workspace	7.4 X 3.9
Toilet	1.4 X 1.8
Office	3.8 X 3.7

ADMINISTRATIVE TYPE B



TYPE B

Total Area 31.7m²

workspace 5.1 X 6.1

Toilet 1.8 X 1.8

ADMINISTRATIVE TYPE F



TYPE F

Total Area	41.3m ²
workspace	3.9 X 3.9
Toilet	1.5 X 1.8
Office	3.8 X 3.7
Storage	1.1 X 1.8

ADMINISTRATIVE TYPE G



TYPE G

Total Area	24.5m ²
workspace	3.9 X 4.2
Toilet	1.4 X 1.8
Storage	1.2 X 1.8

AFG

ALFATH GROUP

☎ 19571

WWW.ALFTHGROUP.COM

HEAD OFFICE: B303 Southern 90th St
New Cairo, Egypt.



skybridge
Signature Hub

skybridge
Signature Hub



HEAD OFFICE: B303, 6TH FLOOR
SOUTHERN 90TH ST. - NEW CAIRO
EGYPT.

 **19571**