



ZAHA
P A R K
NEW CAPITAL





HOMETOWN

Hometown didn't establish Zaha Park just to be another mall. We're creating new chances, opportunities and possibilities. We're creating a new reality. We're encouraging a massive amount of investments. With billions and billions of pounds expected to be invested in the project by the end of 2021, Hometown couldn't be prouder to be one of the important reasons of the success story of The New Capital.

MOVE FORWARD !!

LIFE AS IT SHOULD BE



ZAHA PARK

We created Zaha Park to be the main destination for anyone in the New Capital who is looking for luxury in every aspect of life. It's the place for every dreamer who want his dreams to come true.

1st Commercial & Administrative Business complex in New Capital, Various Area Units Starting from 35 m², Various Use Starting from Coffee Shops, Banking, Restaurants, Bakeries, pharmacy Medical scan and more.



HAVE A RICHER LIFE







NEW CAPITAL MAP



The **New Administrative Capital** is located **45** kilometers (28 miles) east of Cairo and just outside the Second Greater Cairo Ring Road. The city would become the new administrative and financial capital of Egypt, housing the main government departments and ministries, as well as foreign embassies. On **270 sq. mi** total area, it would have a population of 5 million people, though it is estimated that the figure could rise to **seven million**.



العين
السخنة

مدينة
التجارة

الأخضر
الحزام

الأخضر
الحزام

عالم
ديزني

طريق القاهرة - العين السخنة

الطريق الدائري الأقليمي

الكنيسة
الكاثوليكية

الطريق الدائري الأوسطي

محور محمد بن زايد الجنوبي

محور محمد بن زايد الشمالي

التجمع
الخامس

السويس
طريق القاهرة - السويس

المطار
الدولي

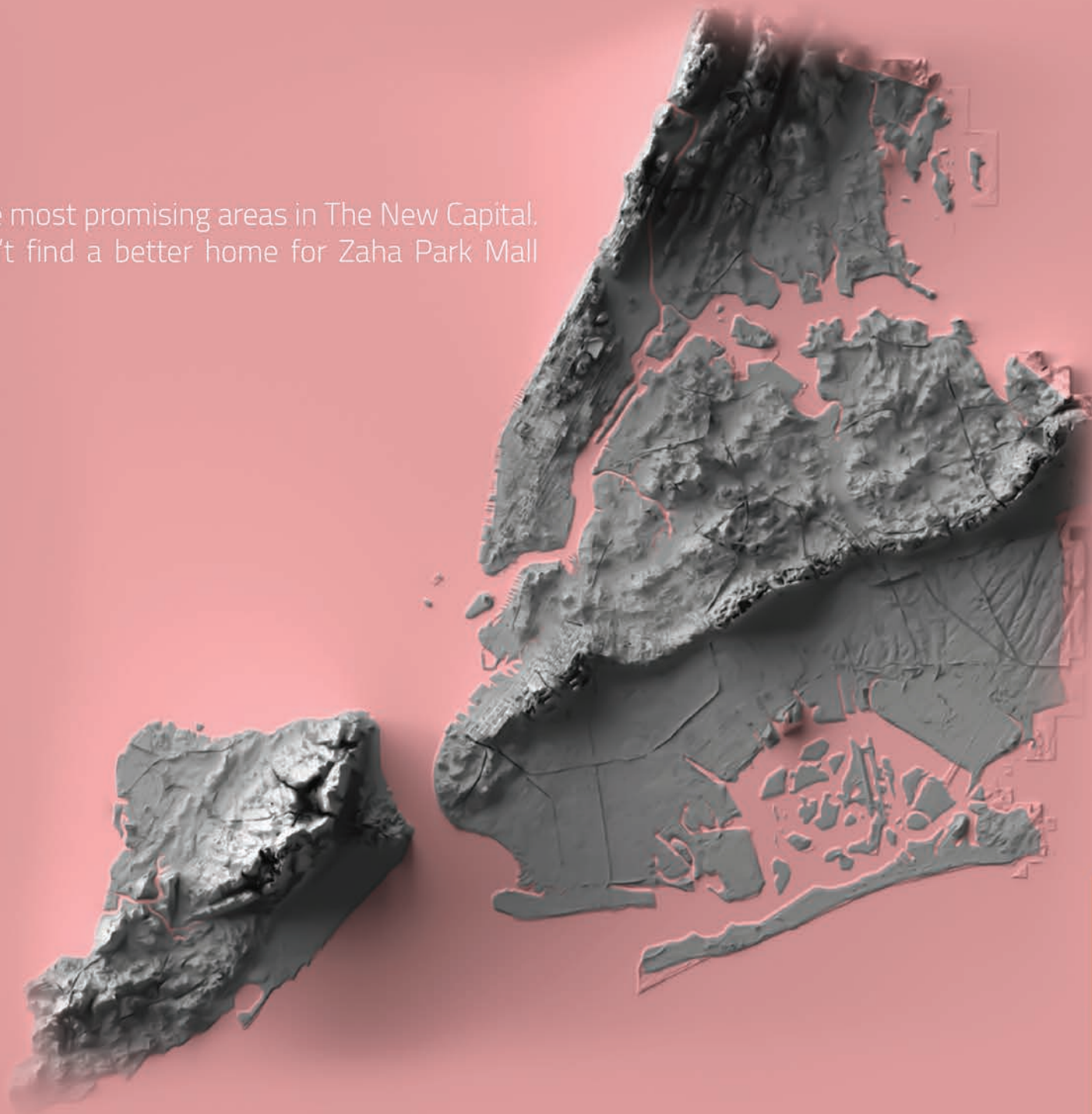
منطقة
الرئاسة

مجلس الوزراء
البرلمان
مبنى
فندق
العاصم
مبنى
الجامعة
الرياضية
المدينة

مسجد
الفتاح
العليم



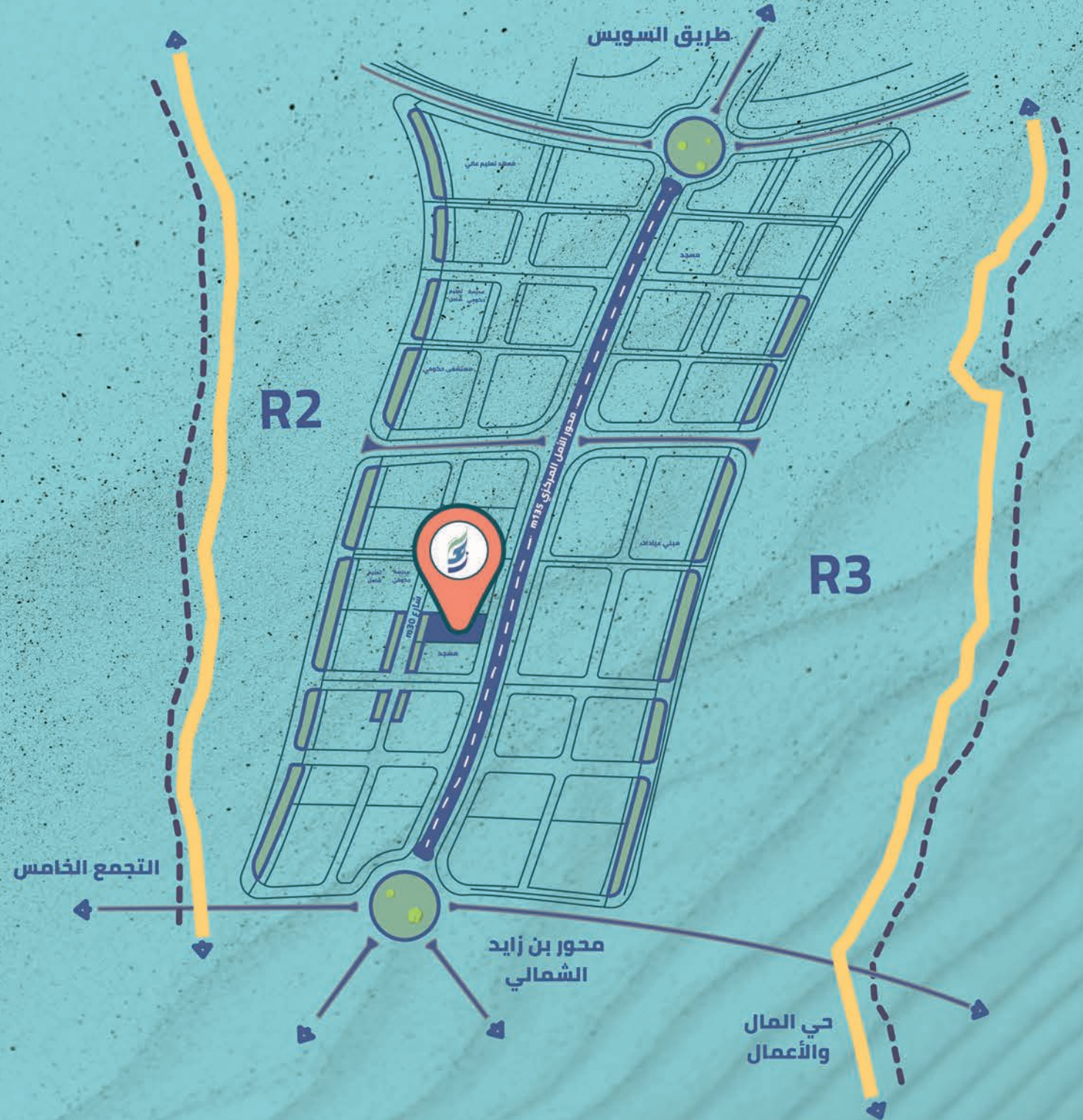
MU23 is the one of the most promising areas in The New Capital. That's why we couldn't find a better home for Zaha Park Mall other than MU23.



MU23 MAP



**250000
PEOPLE**



حي العمال
والأعمال



OUTDOOR TERRACES

When we choose the location of Zaha Plaza we made sure that our customers will have the most glamorous view in the new capital and in order to enjoy such a view we provide **terraces** for commercial, administrative and Medical units. Either you are enjoying your coffee in the coffee shop, in your office or the special **sky lounge** you will be able to enjoy the best view the new capital can offer.





THE PERFECT VIEW





THE ULTIMATE **EXPERIENCE**

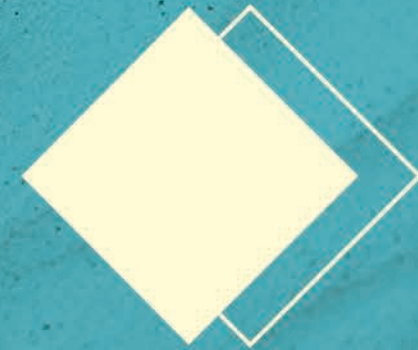


Maximizing Facade

FACADE LENGTH

175 M

The design was made to perfectly match the best location in El-amal axis and to get the best out of the wide interface.







FACILITIES:

- 1- CCTV
- 2- FIRE ALARMS
- 3- FIRE FIGHTING
- 4- SOLAR ENERGY
- 5- ALARM SYSTEMS
- 6- PARKING GARAGES
- 7- ELECTRONIC GATES
- 8- 24/7 SECURITY SERVICES
- 9- ELEVATORS & ESCALATORS
- 10- CENTRAL AIR CONDITIONING
- 11- INTERNAL & EXTERNAL FINISHES
- 12- FULL MANAGEMENT SERVICE (FM)
- 13- RECEPTION & CUSTOMER SERVICE



AMENITIES:

- 1- KIDS AREA
- 2- FOOD COURT
- 3- SKY LOUNGE
- 4- GOLDEN ZONE
- 5- WEEKLY CONCERT
- 6- DANCING FOUNTAINS
- 7- MATRIX TECHNOLOGY CINEMAS
- 8- 1st ARTIFICIAL LAKE IN NEW CAPITAL
- 9- 1st BOWLING CENTER IN NEW CAPITAL
- 10- ADMINISTRATIVE & MEDICAL (FULLY FINISHED)



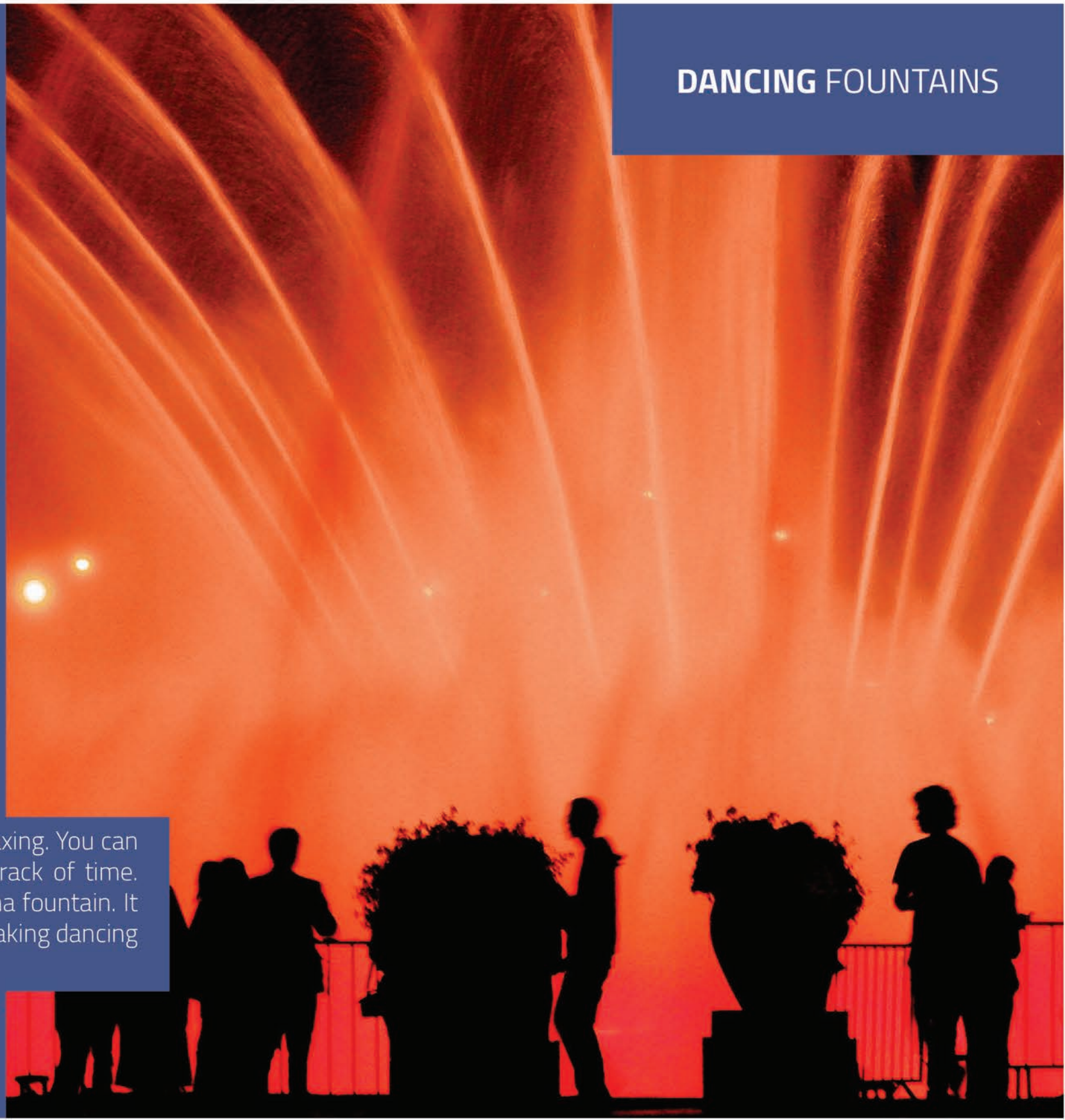
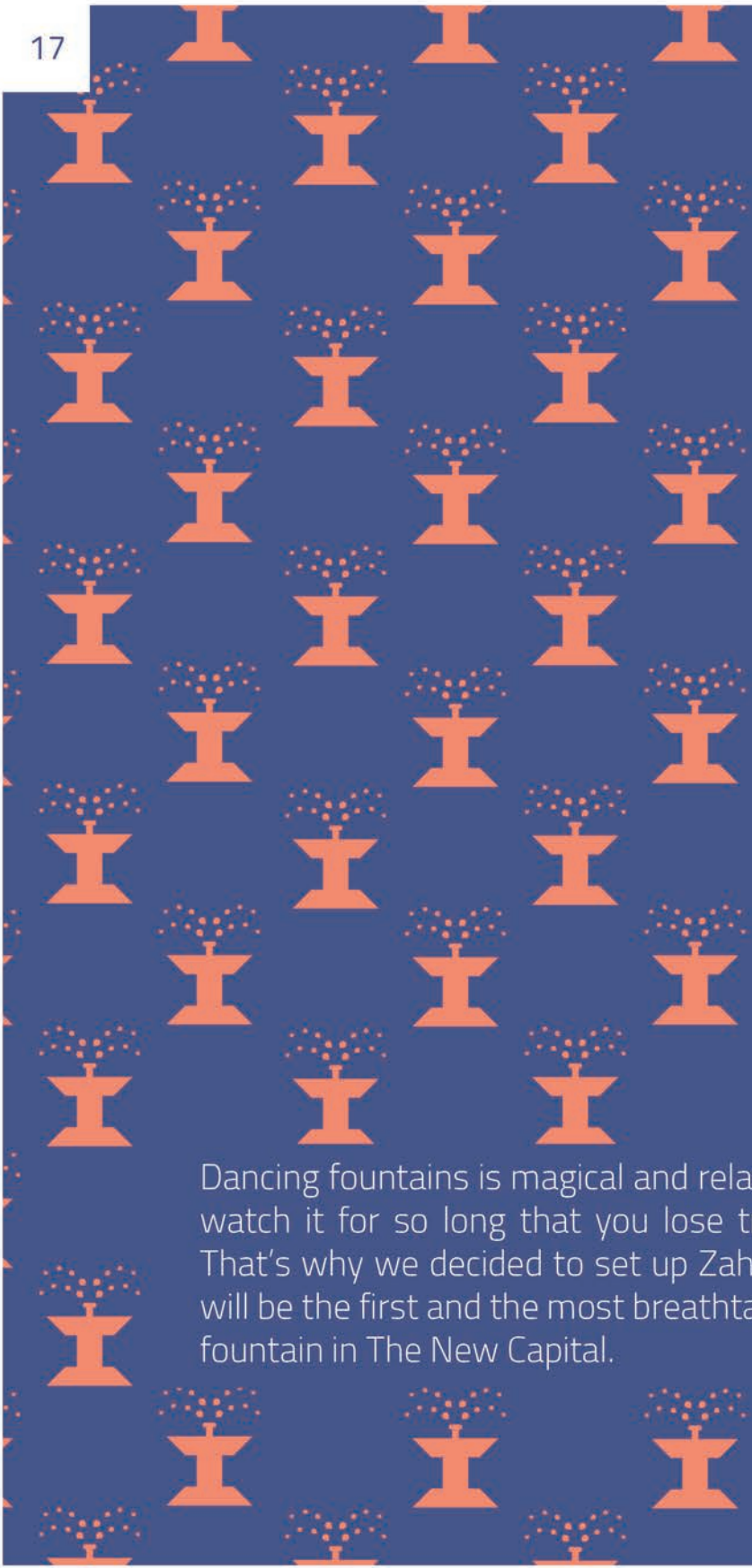
The Ancient Egyptians invented bowling as far back as 5000 BC and we had to celebrate that accomplishment by building the first and the best bowling center in The New Capital.



1ST BOWLING CENTER IN NEW CAPITAL



DANCING FOUNTAINS



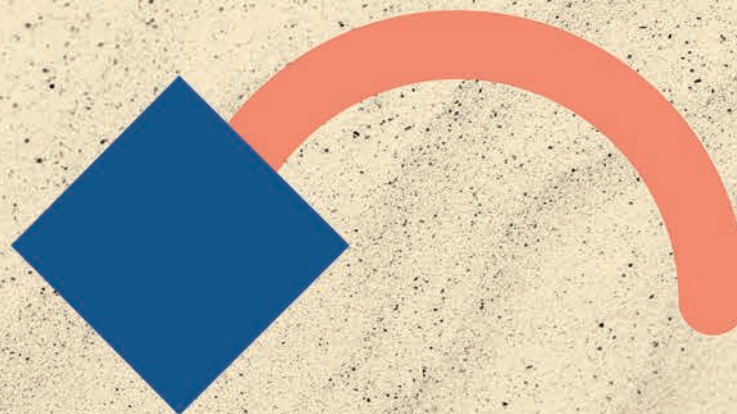
Dancing fountains is magical and relaxing. You can watch it for so long that you lose track of time. That's why we decided to set up Zaha fountain. It will be the first and the most breathtaking dancing fountain in The New Capital.



The desire for jewelry is the most universal and deeply rooted commercial instinct of the human race. That's why we dedicated a whole zone just for jewelry stores. The Golden Zone will be the best place to go to if you are looking for the best jewelry brands in The New Capital.

GOLDEN ZONE

CHANGING WHAT'S POSSIBLE



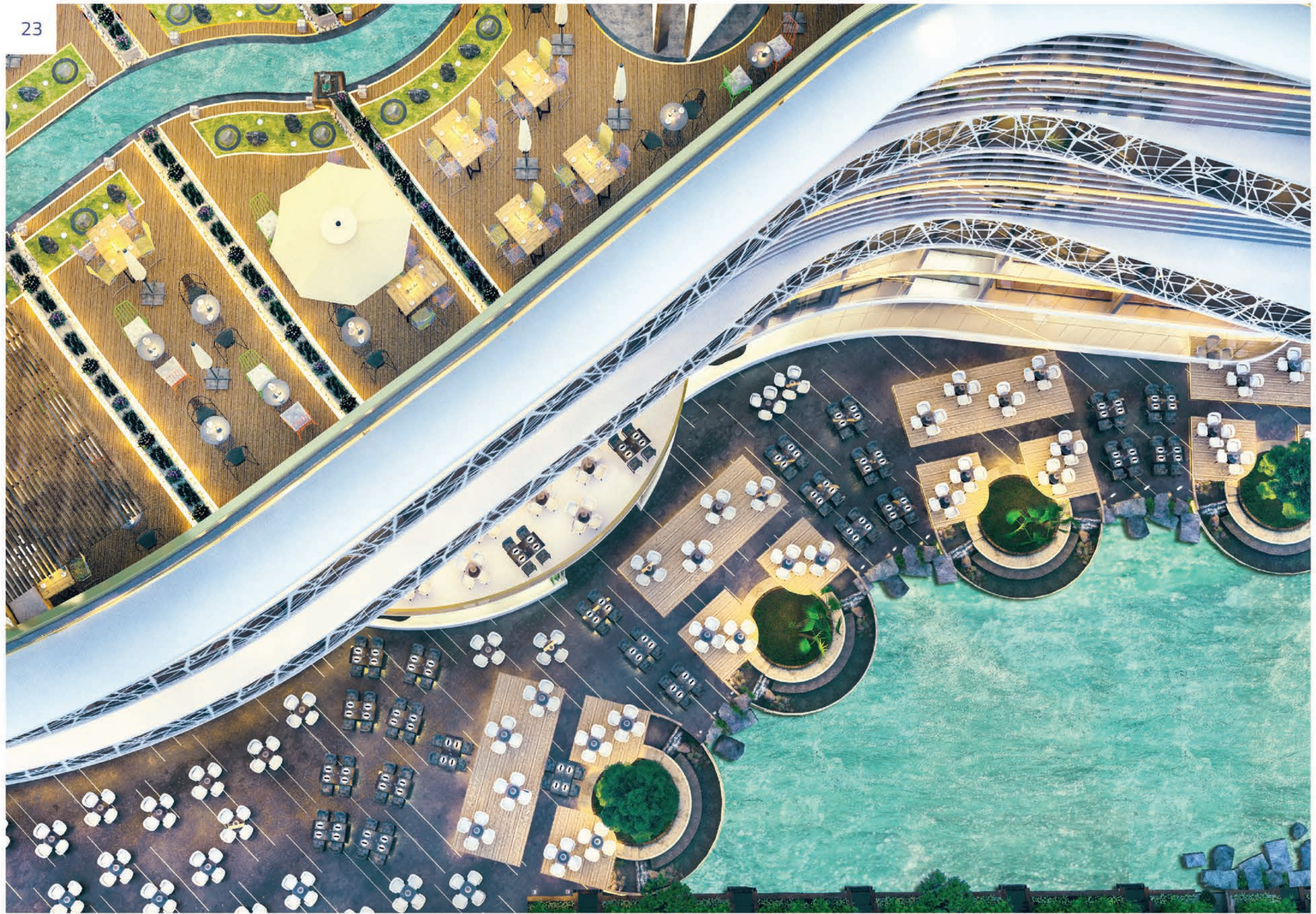
There's something about lakes that take our breath away. From their still surfaces and mirror-like reflections to their crystal clarity. Zaha Lake will be the first artificial lake in The New Capital, and there will be weekly concert with special lights show on it.



1st ARTIFICIAL LAKE IN NEW CAPITAL









COFFEE
TASTES BETTER AT
THE LAKE



DANCING FOUNTAINS
1ST BOWLING CENTER IN NEW CAPITAL
AL AMAL **MAIN AXIS**

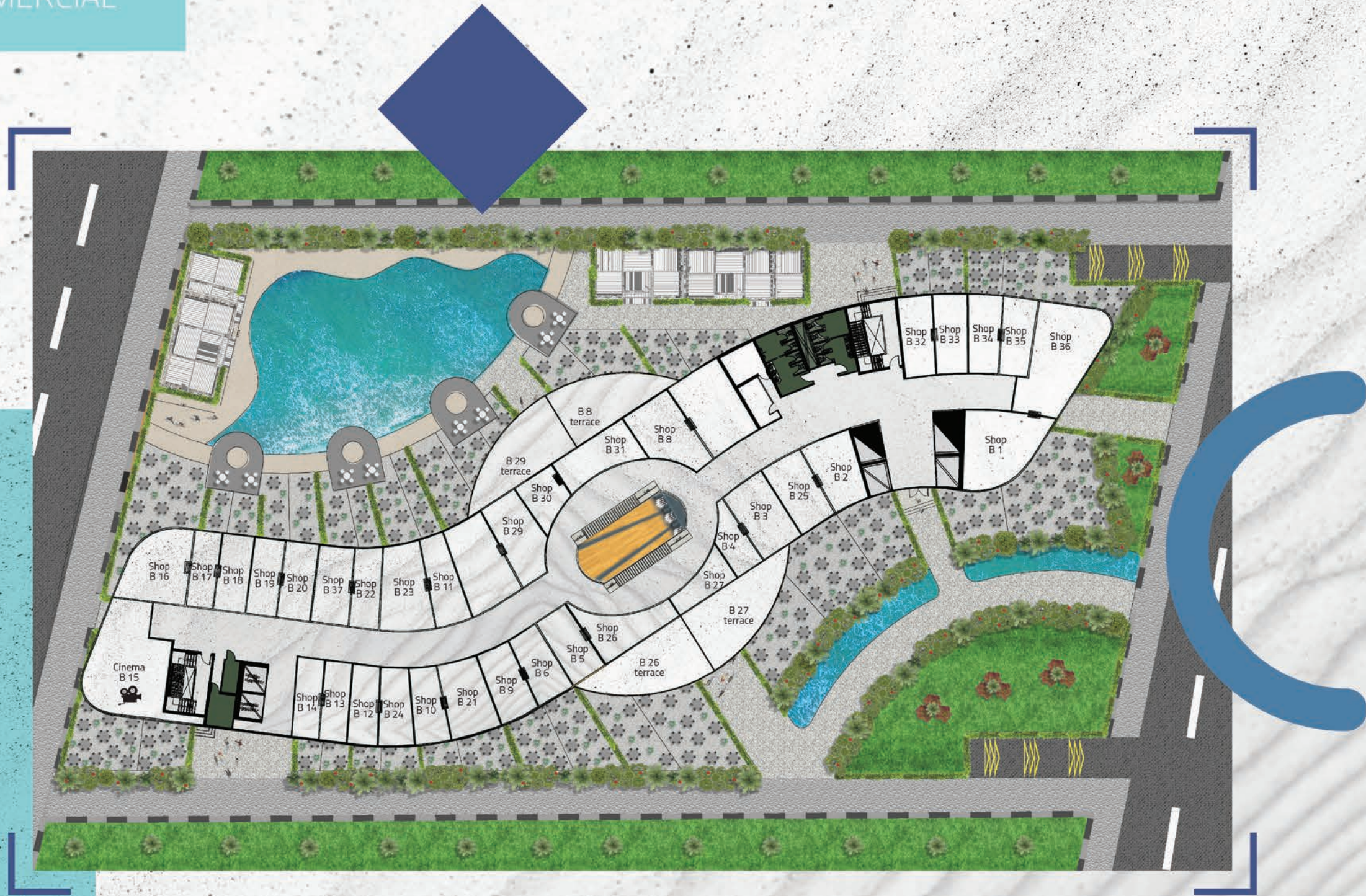
GROUND FLOOR COMMERCIAL





MATRIX TECHNOLOGY CINEMAS
CLOTHING SHOPS

FIRST FLOOR COMMERCIAL

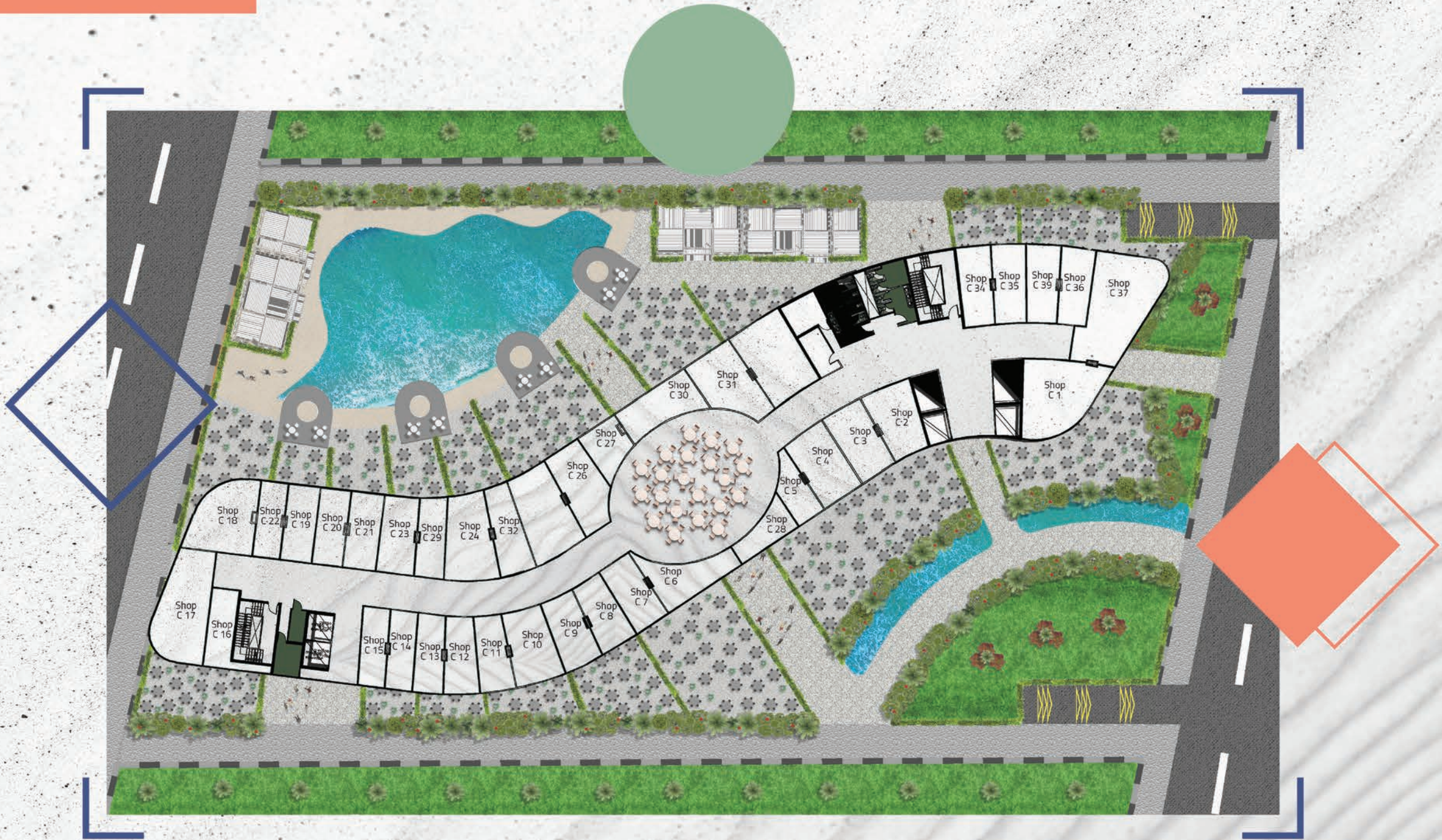




FOOD COURT
KIDS AREA



SECOND FLOOR COMMERCIAL





MEDICAL UNITS

Truly enhance human well-being, building design needs to move beyond optimizing single parameters such as temperature and humidity, to more holistic approaches that take their cues in health-supporting human behaviors.



BUILDING A HEALTHY TOMORROW

FOURTH FLOOR MEDICAL





ADMINISTRATIVE UNITS

Truly enhance human well-being, building design needs to move beyond optimizing single parameters such as temperature and humidity, to more holistic approaches that take their cues in health-supporting human behaviors, just like the medical units the administrative units have a great sky lounge and a special view where you can watch The Green River.

INSPIRING OFFICES



EIGHTH FLOOR ADMINISTRATIVE



NINTH FLOOR ADMINISTRATIVE





f HOMETOWNEG

f HOMETOWNEG.BUSINESS

g WWW.HOMETOWNEG.BUSINESS

**📍 NEW CAIRO - 5TH SETTLEMENT - SOUTH 90TH ST.
THE 340TH BUILDING, 4TH FLOOR**

☎ 19992