



SOLAS
Enlightened Workplaces

The logo for SOLAS features the word "SOLAS" in a white, modern, sans-serif font. The letter "O" is stylized as a circle with a solid white dot in the center, resembling an eye or a target. The letters "S", "L", "A", and "S" are clean and minimalist. The entire logo is set against a dark gray background with large, overlapping, semi-transparent circles of varying shades of gray.

SOLAS

Enlightened Workplaces



THE LAND OF BUSINESS OPPORTUNITIES

Egypt has always been the top business destination in the Middle East and Africa, thanks to its strategic location, easy access to global markets, and expansive trade agreements. The country's steadfast approach to provide enhanced infrastructure and introduce business-friendly laws and regulations has opened the door to more investment opportunities. Whether you're an entrepreneur or investor, there's never been a better time to invest in Egypt's new administrative and financial capital.

We would like to invite you to discover the future opportunities that Egypt holds...

“EGYPT BEGAN TRADING WITH THE WORLD DURING THE 25TH CENTURY BC AND TODAY EGYPT IS BUILDING A SMART CITY FOR A PROSPEROUS FUTURE”



**WHILE THE FUTURE - WITH ITS
SMART CITIES - IS ALMOST
HERE, NOT EVERYONE IS
READY FOR IT**

SMART CITIES with:

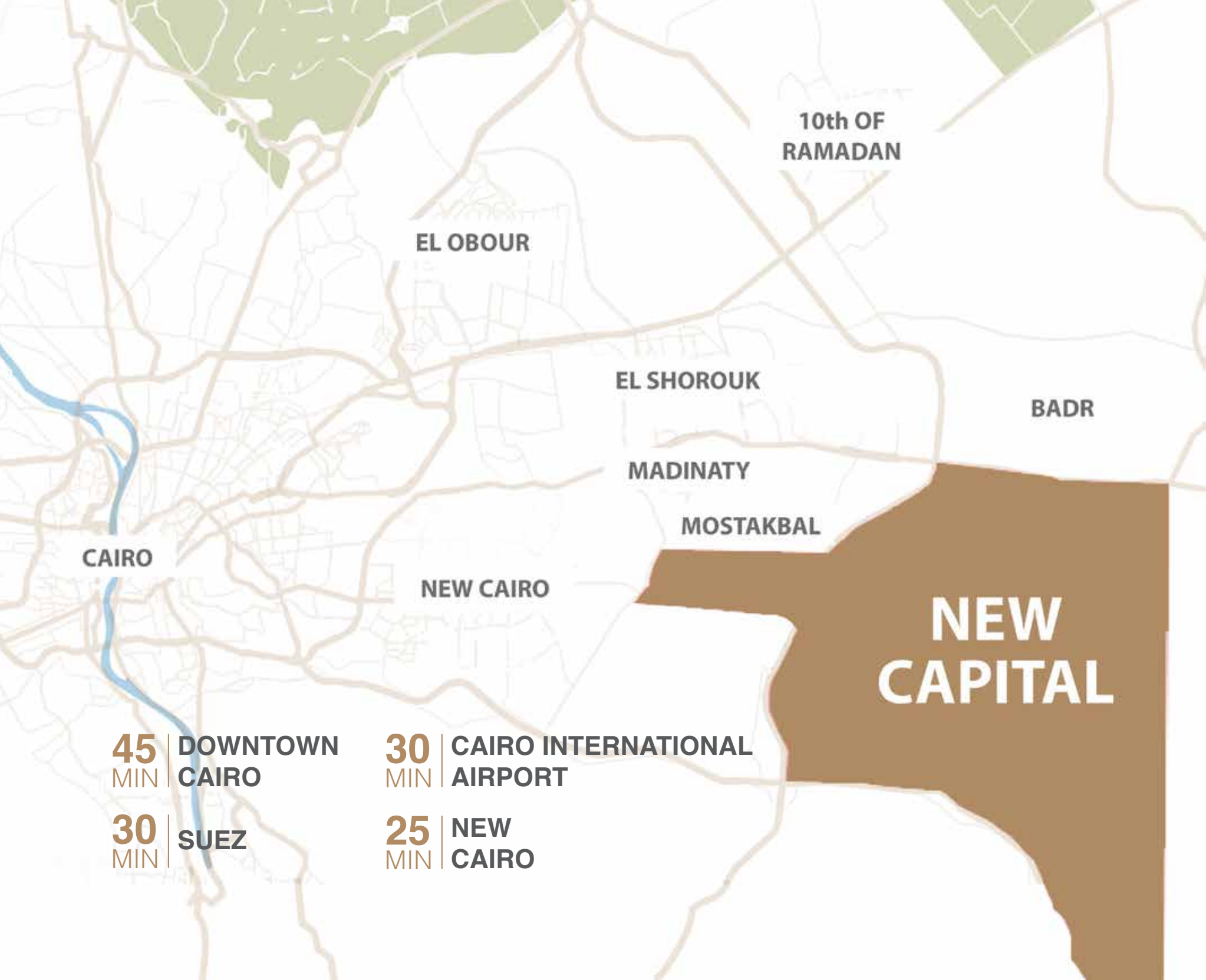
SMART INFRASTRUCTURE

SMART TECHNOLOGIES

& SMART FACILITIES

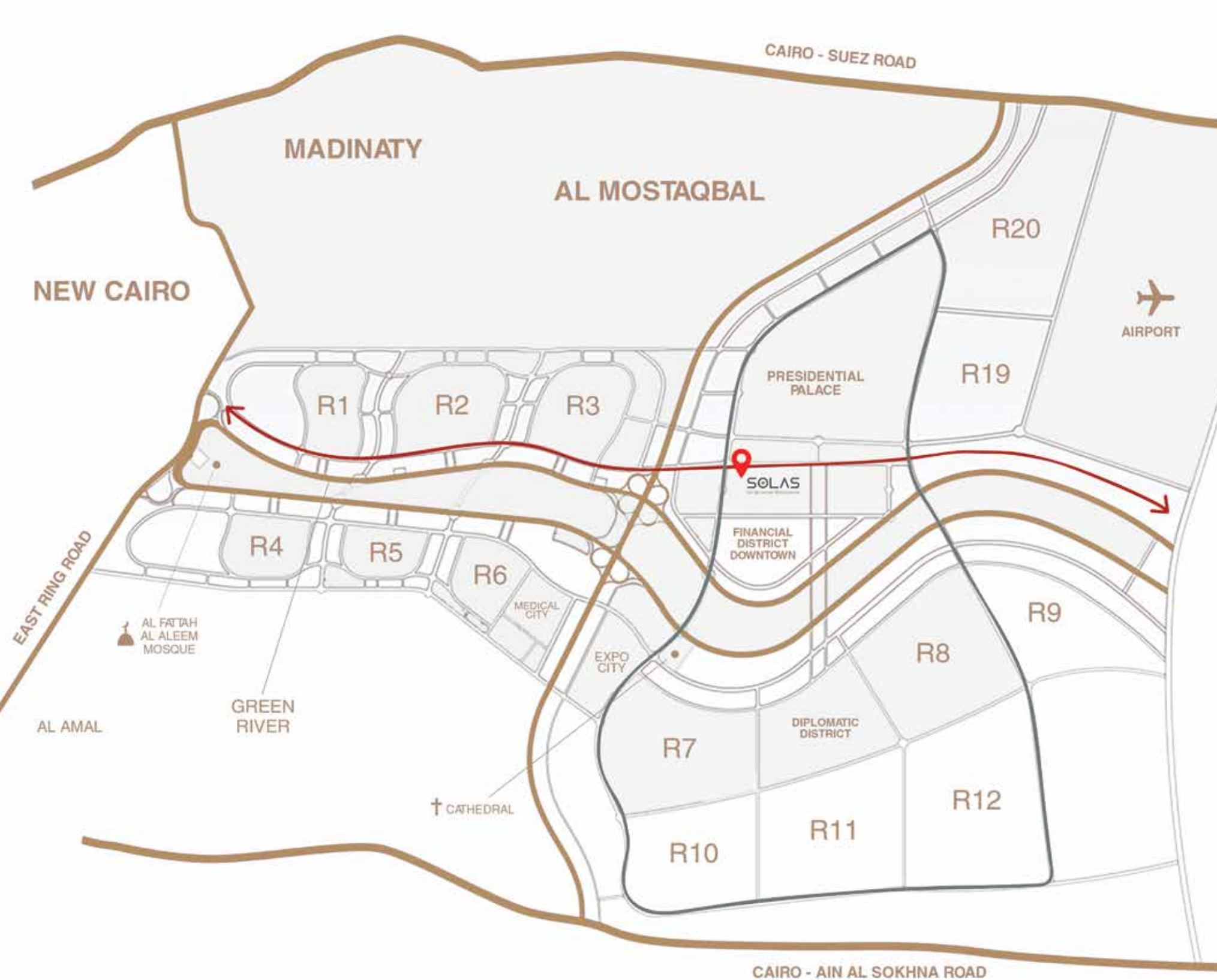
MOST IMPORTANTLY, SMART CITIES NEED FUTURE-
READY BUSINESSES & SPACES

SOLAS BRINGS TO YOU JUST THAT



THE FUTURE OF CITY LIVING

Egypt records an average annual growth rate of 6.7% and is classed as the world's third fastest growing economy to 2026. The flourishing economy has resulted in an unrivaled surge in the real estate market and growing demand for new administrative, commercial, and residential spaces. This led to the decision to build a new smart city that can accommodate the booming economic outlook of Egypt.



THE FUTURE OF CITY LIVING

Located 48 kilometers east of Cairo, Egypt's New Administrative & Financial Capital covers a colossal area of 700 square kilometers and features state-of-the-art infrastructure and facilities. The smart city is fully-sustainable and will be home to the region's largest and most exciting recreational attractions. The city also embraces upscale residential areas and designated business districts for governmental entities, private institutions, and global corporations.



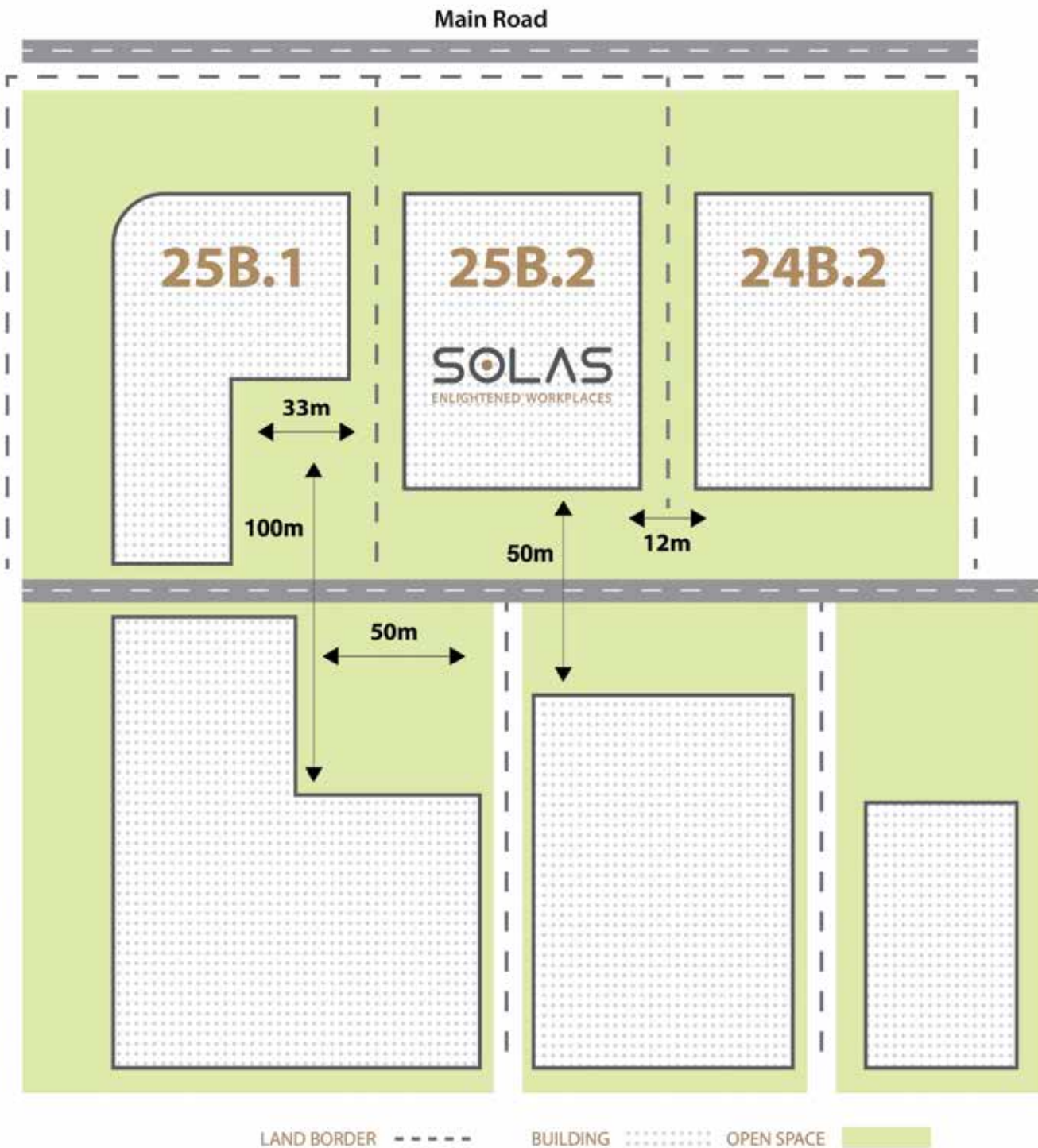
THE FINANCIAL & BUSINESS DISTRICT

The growing economy, along with the government's recent economic and social reform program that was launched to establish a solid foundation for sustainable development, has paved the way for a promising future. This is powered by policy and legislative reforms that aim to enhance Egypt's financial and business investment climate and boost financial confidence for local and foreign businesses.

To bring these reforms to reality, the Financial & Business District at Egypt's new administrative capital is positioned as the official, thriving hub for all businesses - public and private, regional and international, small and large. The city will offer unparalleled business services and enjoys a most prime location, with easy and timely access to the internationally connected ports of Cairo, Ain Sokhna, and Suez.

-  - HDB: Housing & Development Bank
- **SOLAS by VOW Developments**
- Financial Institute
 -  - Egyptian Gulf Bank
- MID: Misr Iran Development Bank
 -  - IDB: Industrial Development Bank
- National Bank of Egypt
- United National Bank
 -  - Suez Canal Bank
- NBD: National Bank of Dubai
- Wafa Commercial Bank
- CIB: Commercial International Bank
 -  - AIB: Arabi Investment Bank
- ES Egypt
- The United Bank
- Faisal Islamic Bank of Egypt
- Ministry of Commerce
 -  - Banque Du Caire
- Banque Misr
- Agriculture Bank of Egypt
 -  - Arab African International Bank
- EALB: Egyptian Arab Land Bank
 -  - QNB Al Ahli
- EBE: Export Development Bank of Egypt
- AIB: Arab International Bank
 -  - Baraka Bank
- NBK: National Bank of Kuwait
-  - Monorail  - Metro.





REMARKABLE LOCATION

STIMULATING NATURAL LIGHT

In the thriving heart of the new capital's Financial & Business District lies an avant-garde structure that is bound to become Egypt's future business hub and aspired business address.

The plot has a unique shape and relation to its neighboring buildings creating spacious surrounding, open views and natural light to almost all offices with distances between buildings up to 80m at the left back, SOLAS offers more premium workplaces and a variety of scenery.

SOLAS

FINANCIAL DISTRICT
NEW CAPITAL

ENLIGHTENED
WORKPLACES





SOLAS

Enlightened Workplaces

WHERE THERE'S LIGHT, THERE'S LIFE

At SOLAS, we created an entirely new workspace concept that revolves around the spirit of light. We created vibrant spaces and bright offices that infuse light to inspire life, offering an aesthetic balance between your business needs and wellness essentials.

ENJOY WORKING IN UTMOST SOLACE

The unconventional architecture and large glass windows reveal the surrounding open views and allow the sun's soft rays to illuminate SOLAS's spacious interiors. With its sundrenched public spaces and welllit Workplaces, SOLAS provides a stimulating ambiance for those looking to work in utmost solace.

INFUSING LIGHT, INSPIRING LIFE

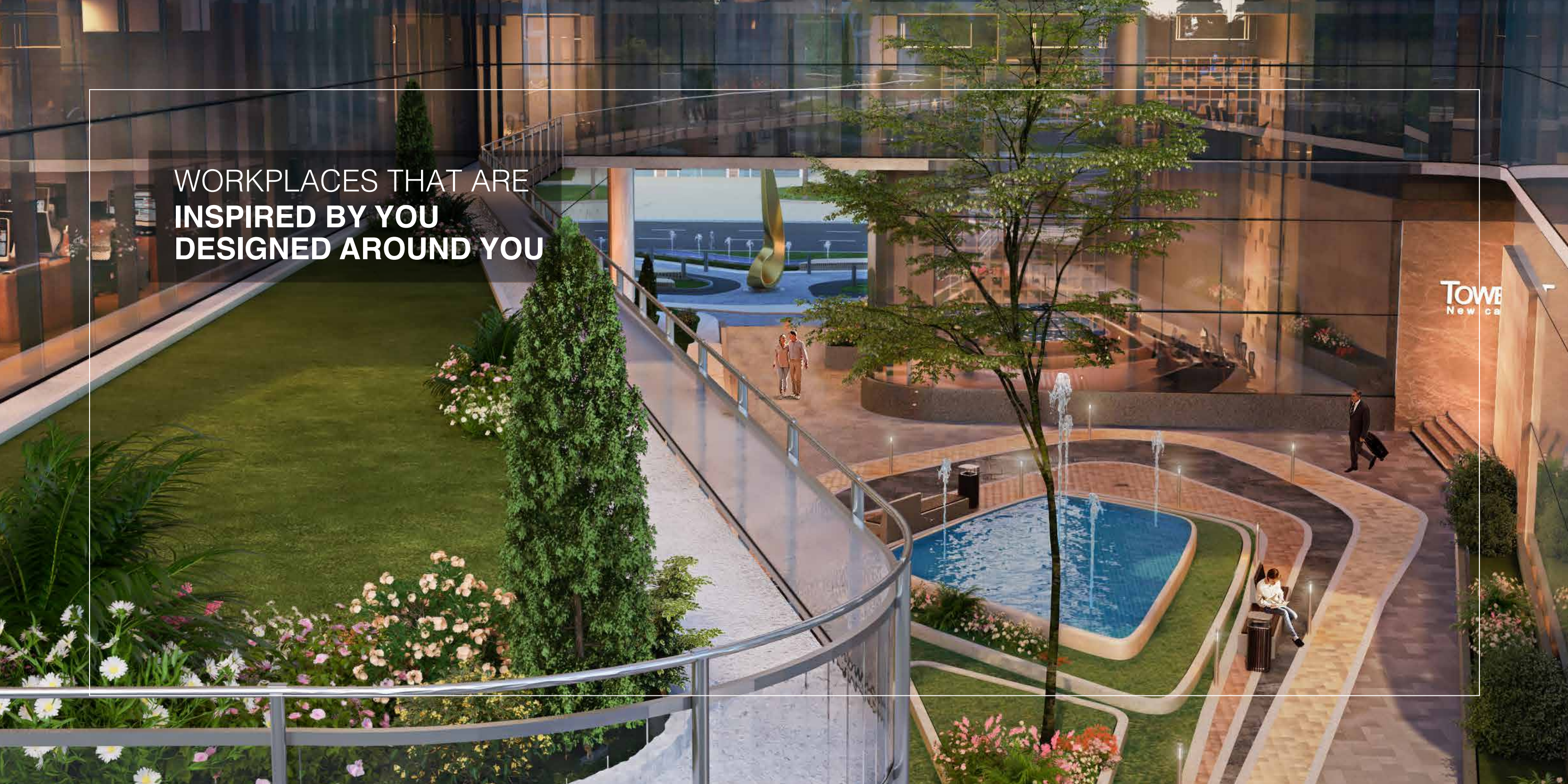
Light is the essence of life. It's the source of energy that keeps us aspired and inspired to live better, work better, and achieve more. SOLAS is more than just a place to do business. It's the place where horizons are extended, opportunities are expanded, and the future world of business comes to life.

EXPERIENCE WELLBEING IN EVERY SENSE

At SOLAS, your wellbeing is catered for in every sense. We made sure that the sun shines directly into every workspace, public space, and meditation space. With the right balance of natural light and warmth, we created soothing moods that heal the soul and boost your energy and productivity levels.

WORKPLACES THAT ARE
INSPIRED BY YOU
DESIGNED AROUND YOU

TOWERS
New city



INSPIRED BY YOU. DESIGNED AROUND YOU

When we set out to fulfil our vows and make a difference in the world, we realized that delivering innovative spaces for the future is only possible if it starts with you and ends with you.

Your workplace is more than just a desk and a chair in an enclosed room; it's a place where you spend most of your day and are expected to be profusely productive. We believe that your personal workspace plays a most crucial role in your success. That's why we deliver Workplaces that are inspired by your lifestyle and designed around you, your needs, your dreams, and your aspirations.

Putting you at the heart of everything we do, every little detail at SOLAS is inspired by your desired lifestyle and designed around you, from the design to the layout, ambiance, and facilities.

DESIGNED AROUND YOUR ASPIRATIONS

You no longer need to search for a workspace that reflects your personality and fulfils your needs at the same time. SOLAS is not just a business address; it's your very own workspace that helps you achieve your goals and inspires you to live and work better.

DESIGNED AROUND YOUR HAPPINESS

Happiness may be a state of mind, but SOLAS is designed to provide more than just a happy state of mind. Every feature was carefully selected to make your workspace a source of gratification, from the awe-inspiring views to the open spaces, balanced colors, and natural elements.

DESIGNED AROUND YOUR WELLBEING

Inspired by your desired wellbeing, SOLAS is designed to help you achieve your business goals in a healthy environment. Step out of your office and take a quick break at SOLAS's on-premise health club or meditation area to recharge.

DESIGNED AROUND YOUR COMFORT

SOLAS offers an extraordinary environment that is, both, stimulating for the mind and calming for the soul. Every nook and corner is specifically designed around your need for comfort, allowing you to live peaceful and stress-free experiences, and to work more productively.

DESIGNED AROUND YOUR BUSINESS NEEDS

As an all-inclusive administrative building, SOLAS is designed around your business needs. Our business facilities and supplementary services are fully-equipped to serve your business at all times, allowing you to focus on running your day-to-day operations while we take care of everything else.

DESIGNED AROUND YOUR SAFETY

Your safety is part of your wellbeing, and the facilities at SOLAS are fully-automated and controlled using a smart Building Management System (BMS). To warrant your full protection against hazards, the building is also secured with state-of-the-art equipment and measures.



AN EMBLEM OF WORKPLACE EXCLUSIVITY

SOLAS is an iconic building that's designed as an emblem of exclusivity and functionality for Egypt's new promising economic future. With its stately outlook and advanced facilities, SOLAS is all about working in style and balancing between work and play – with wellbeing at its core. This flourishing and inspiring community offers Workplaces that make a bold statement and help you unlock business opportunities and achieve business excellence.

It's the ultimate place where creativity flows freely, and targets are met easily.



WORKSPACES THAT INSPIRE YOUR SOUL

SOLAS offers a wide variety of workspaces that can be customized to your preferences and business needs, with areas ranging between 48 and 500 sqm. All of the offices are fully-finished and fitted with electricity, water, wastage, and network cables. The entire building is serviced with Wi-Fi internet and central Air Conditioning and includes state-of-the-art conference and meeting rooms, a business center, lounges, break areas, and self-service kitchenettes.

Each of SOLAS's two buildings includes a ground floor, 7 upper floors, and two basement floors dedicated to parking spots for business executive. The rooftop is home to a relaxing terrace that's perfect for coffee breaks, informal meetings, and small networking events. Powered with solar energy, the building also includes electric generators and a water reserve tank for emergencies.

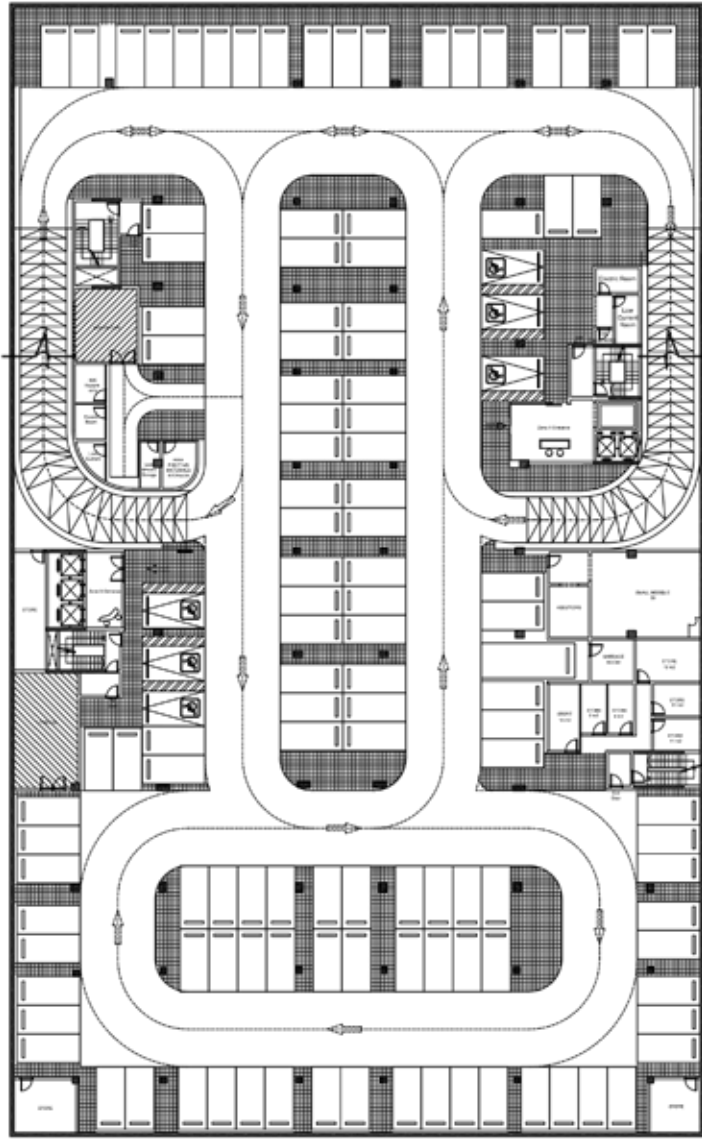
Find the perfect office for your business and unlock opportunities for the future.

**SOFT CURVES THAT
REFLECT AND DIFFUSE
LIGHT IN EVERY PLACE**

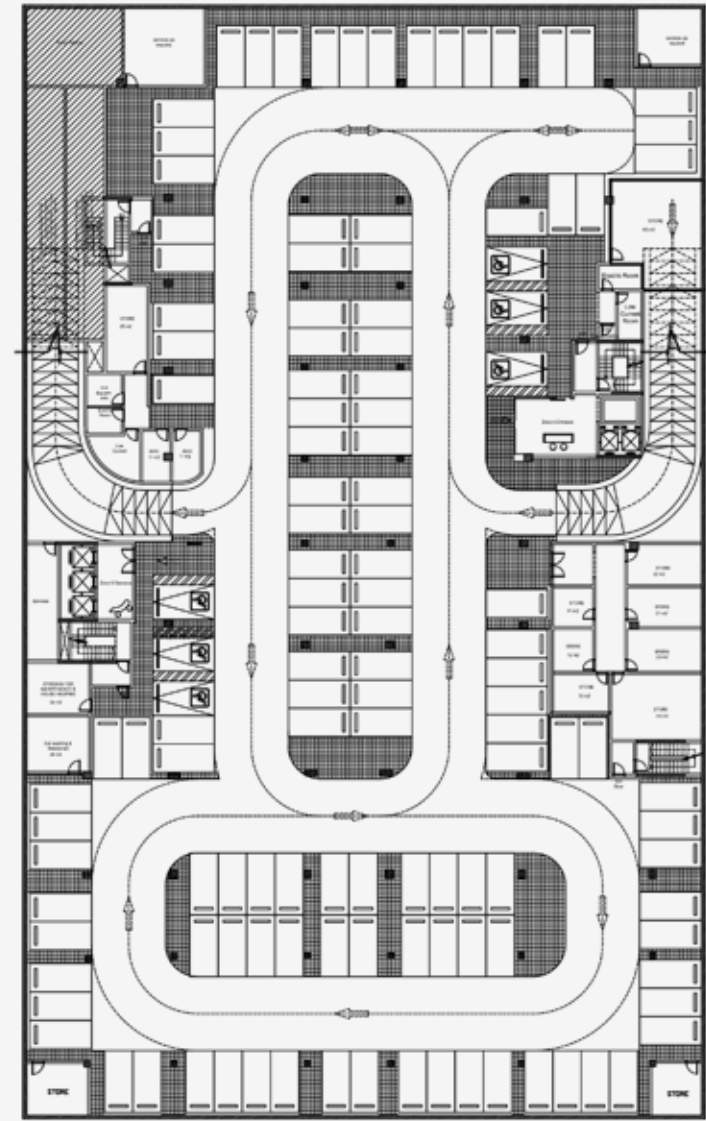
SOLAS



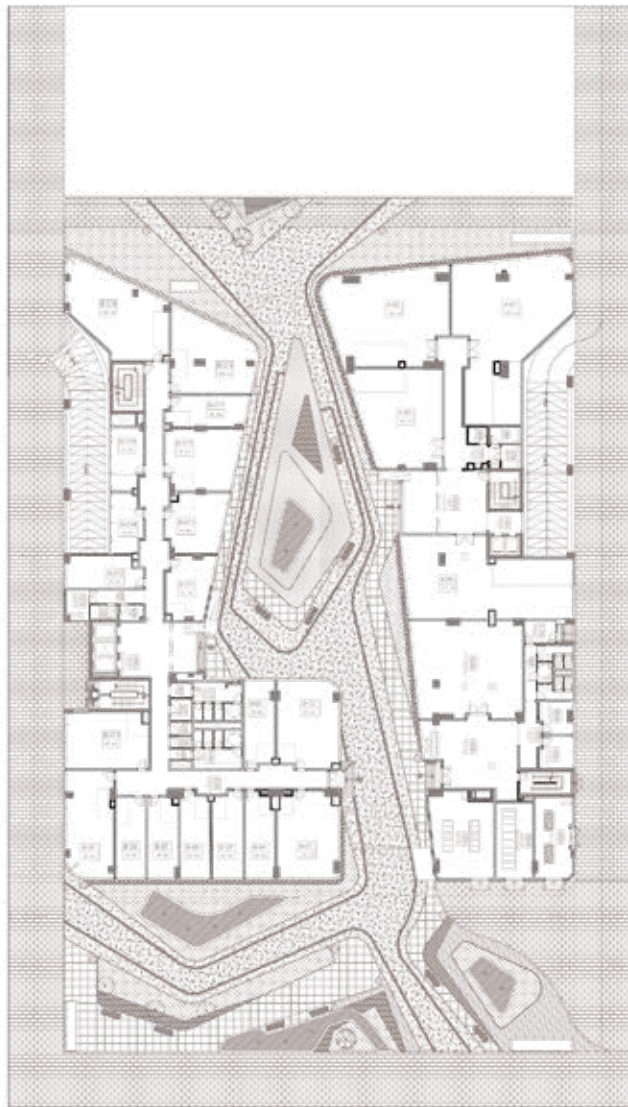
BASEMENT 1 FLOOR
NO. OF CARS= 122



BASEMENT 2 FLOOR
NO. OF CARS= 126



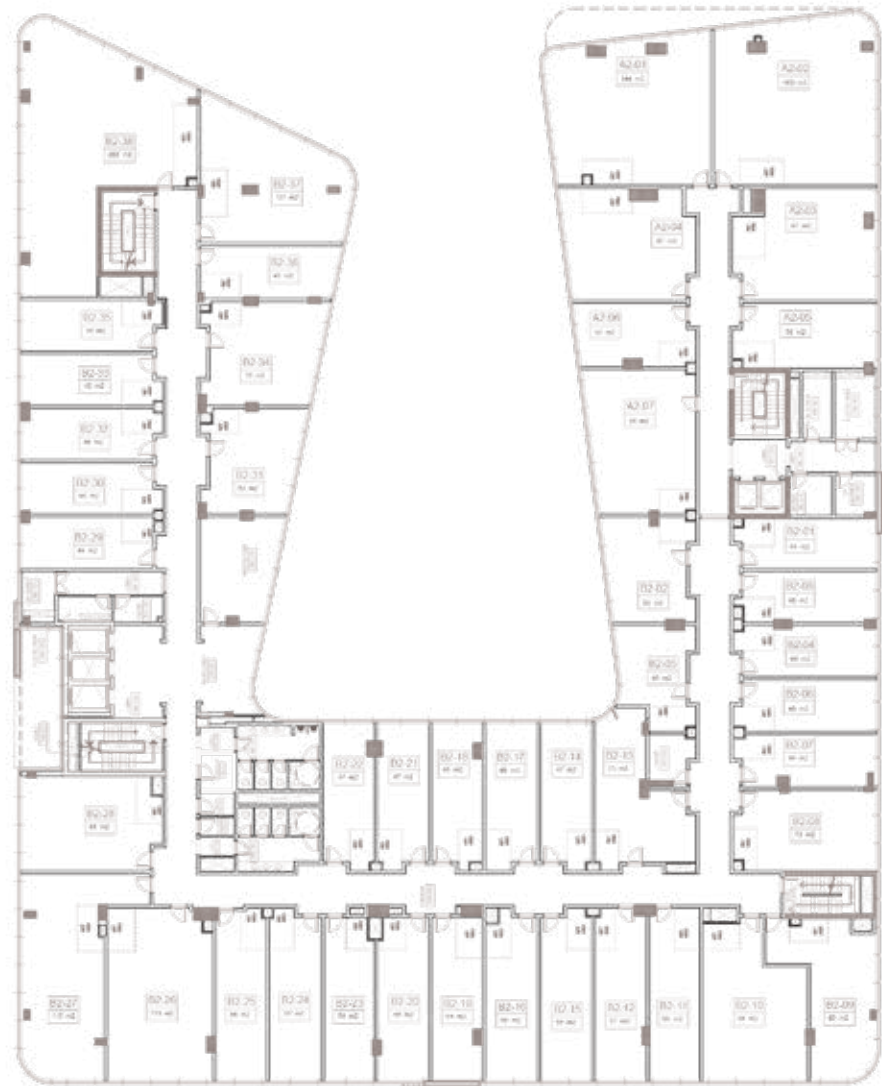
GROUND FLOOR



FIRST FLOOR



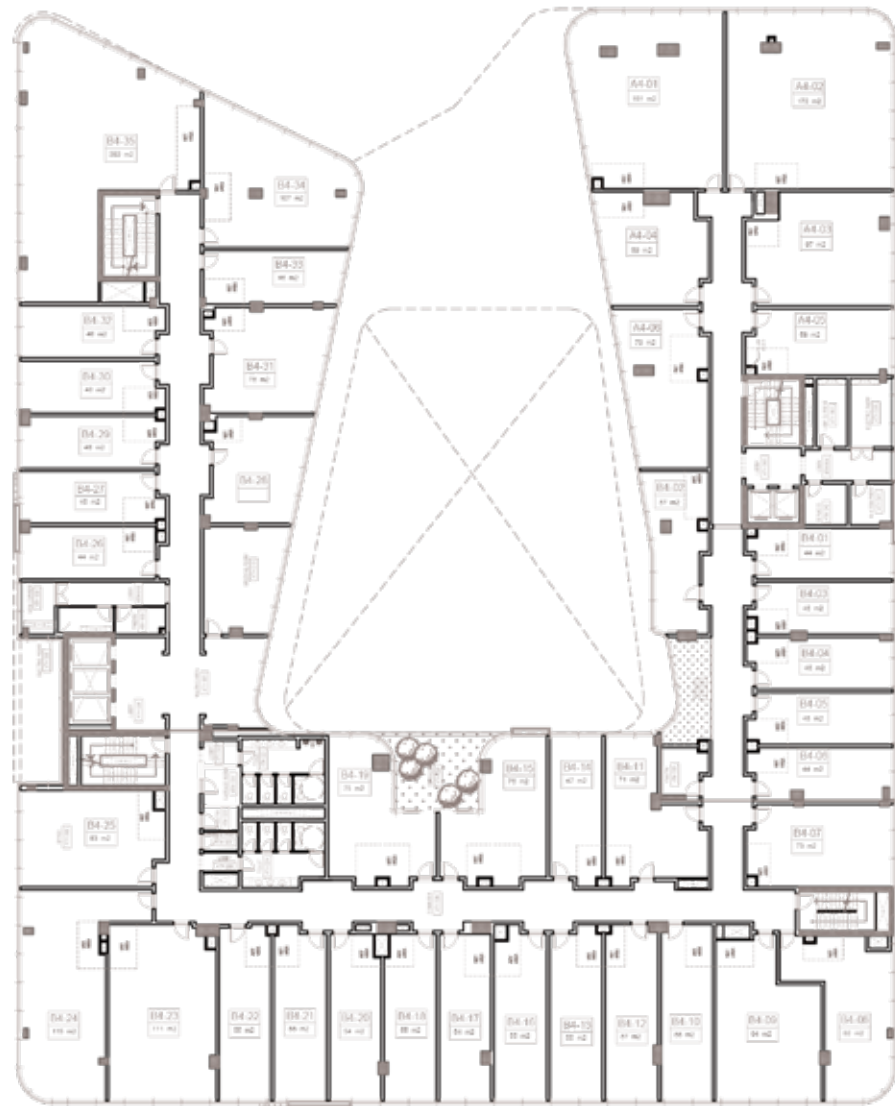
SECOND FLOOR



THIRD FLOOR



FOURTH FLOOR



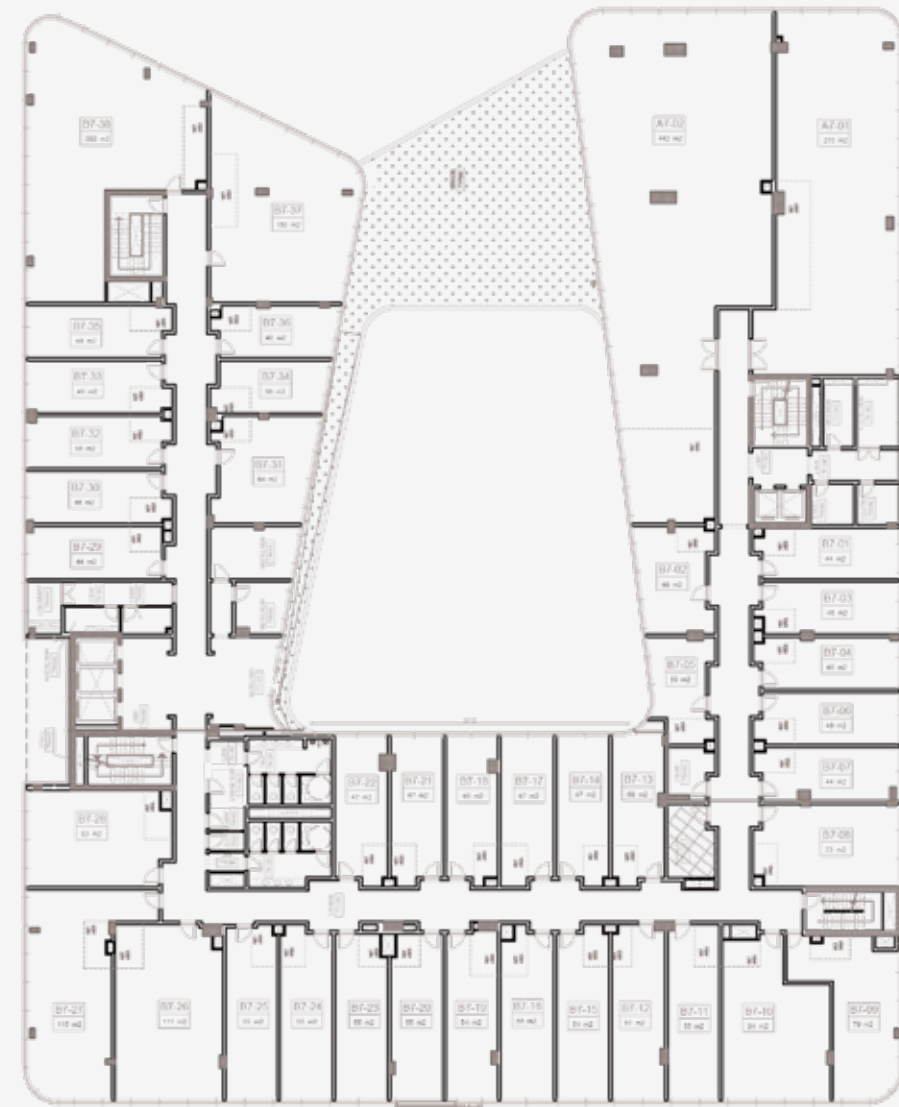
FIFTH FLOOR



SIXTH FLOOR



SEVENTH FLOOR



IT'S THE LITTLE DETAILS THAT MATTER MOST

At VOW Developments we don't just develop conventional real estate properties. We create unique and inspiring spaces that deliver value and empower you to work well and live better. We believe that our attention to details is what drives us to deliver exceptional workspaces and unrivalled customer services for the future business world.

SOLAS catches the eye and captures the soul from afar, making a bold statement with its remarkable structure and seamless curvatures. The unique and futuristic architecture truly proves mankind's unlimited imagination and strive for perfection. To complement the surrounding landscape, SOLAS uses natural elements and its façade is an impeccable fusion of stone cladding and glass.

AESTHETICALLY-PLEASING DESIGNS

Comprising of two unique buildings that seamlessly merge to form a U-shape, SOLAS stands out in the new capital with its artistic design that symbolizes modernity and minimalism. The spacious interiors elicit comfort and elegance, feelings that immediately begin once you set foot into each of the two stately entrances and walk through their grandiose lobbies.

AWE-INSPIRING VIEWS

SOLAS enjoys an outstanding panoramic view of the Presidential Palace and 1,300sqm of surrounding landscapes, offering splendid views that please the eye and soothe the mind. The building also embraces ground-floor social spaces, rooftop terraces, and an inner patio, all of which are infused with greenery and water features. This helps maintain your wellbeing and provides a truly inspiring work environment.

SOLAS aims to create impactful experiences that make a real difference in your life and empower you to work and live better. With our established expertise in the real estate market and ability to embrace innovation and technology, we're able to offer unique workplaces and work-life experiences that are inspiring and future-ready.

SOLAS incorporates the highest safety and security standards and is monitored round-the-clock by CCTV. Fitted with a smart Building Management System, the entire building includes smoke detectors, ventilators, alarms, and fire-fighting systems that are monitored and controlled remotely. A renowned security firm has also been commissioned to provide on-premise security personnel and added safety measures.

SOLAS is equipped with advanced amenities that were carefully selected to ensure your wellbeing and comfort. The entire building is infused with fresh air ventilators to provide an always fresh and untainted atmosphere, while the Central Air Conditioner is kept at optimum seasonal temperatures for your year-round comfort.



IMPACTFUL . SMART . EQUIPPED

As an all-inclusive administrative building, SOLAS is designed around your business needs.

SOLAS includes all the smart facilities and a full line of business services available throughout the day, allowing you to focus on managing your daily business while we take care of your needs.

Your physical and mental well-being is as important to you as it is, so SOLAS is designed to enable you to achieve your goals in a healthy and balanced environment with a health club as you dedicated to rest and meditation.

Because ensuring your safety is part of our mission, all SOLAS entrances and facilities are fully insured against risk and control using the Smart Building Management System (BMS) with the latest equipment and security measures.

- 500m² conference center with a private entrance
- Open work spaces
- 10 meeting rooms
- 18 mixed-use rooms
- 5 elevators
- Waiting lounge in each floor
- Security - CCTV
- Entertainment area
- Parking
- Building Management System "BMS"
- Roof Cafe
- Fitness Area
- Green terraces, water features and landscape

SOLAS

ENLIGHTENED WORKPLACES





PUBLIC AREAS

The sustainable interior design ensures high environmental quality AND the optimum parameters of indoor climate like the quality of air, humidity, illumination, and reduction of noise.

The carefully designed and executed daylighting systems realized through different methods technologically and technically is a basic factor in the spatial organization of interiors, helping in creating its stylistic identity and structural integrity with the building components as well.



Serena Floor
OFFICES &
MEETING ROOM

6
5TH Floor
OFFICES

4
3RD Floor
OFFICES

2
1ST Floor
OFFICES

G
Ground Floor
RECEPTION

Serena Floor
OFFICES &
MEETING ROOM

6
5TH Floor
OFFICES

4
3RD Floor
OFFICES

2
1ST Floor
OFFICES

G
Ground Floor
RECEPTION

ELEVATORS



CONFERENCE HALL



FINISHING SPECIFICATIONS PUBLIC AREAS

ENTRANCES:

- Granite Stairs
- Granite Flooring

BATHROOMS:

- Ceramic Flooring
- Ideal Standard Units

BR SEWAGE NETWORK

OAK WOOD DOORS

STAINLESS-STEEL ACCESSORIES

SEWEDY CABLES ANTI FIRE CABLES

FIRE FIGHTING NETWORK AND ALARM SYSTEM

SURVEILLANCE CAMERAS

NETWORK



EXECUTIVE OFFICES



WORKSTATIONS

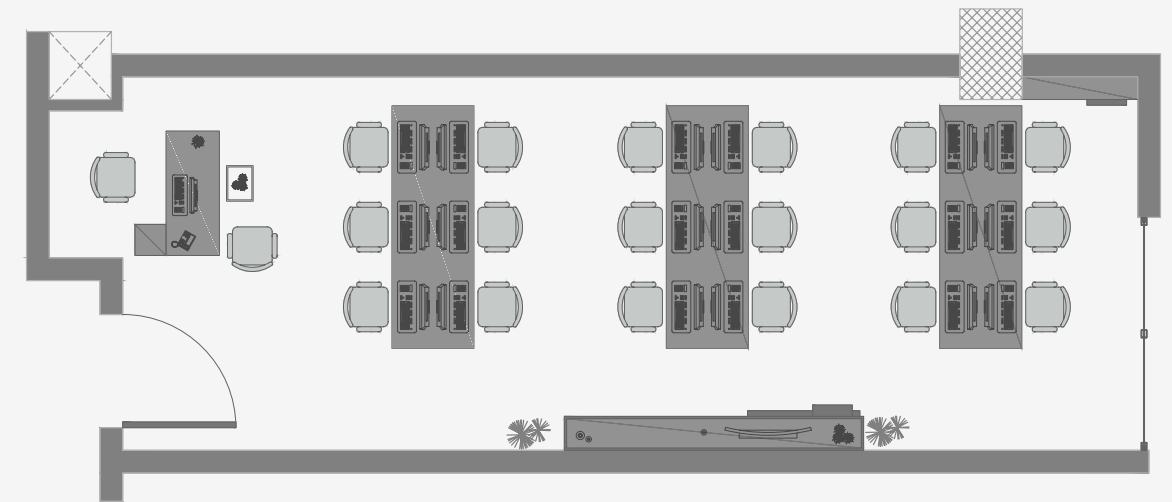
OFFICE PLANS OPTIONS FUNCTIONALITY IS KEY

Small structures must be flexible to perform the same programmatic roles as larger ones.

The success of the 48m² floor plan in meeting so many needs and accommodating up to 20 seated workspaces; is due to the flexibility of the space itself. In contrast to the traditional floor plan in which spaces were dedicated to individual functions, a single space simultaneously accommodated many functions.

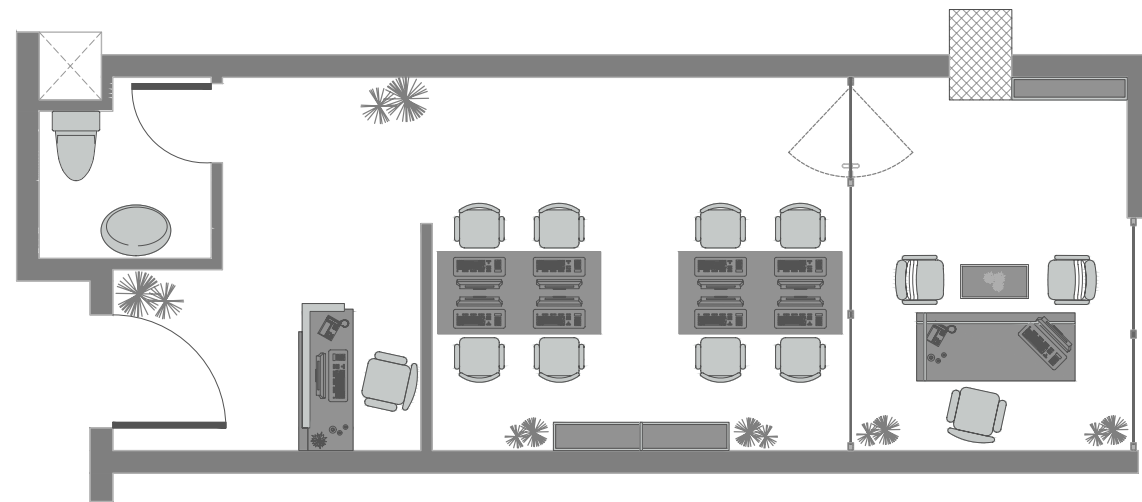


OFFICE PLANS (48M²)



LAYOUT OPTION 1

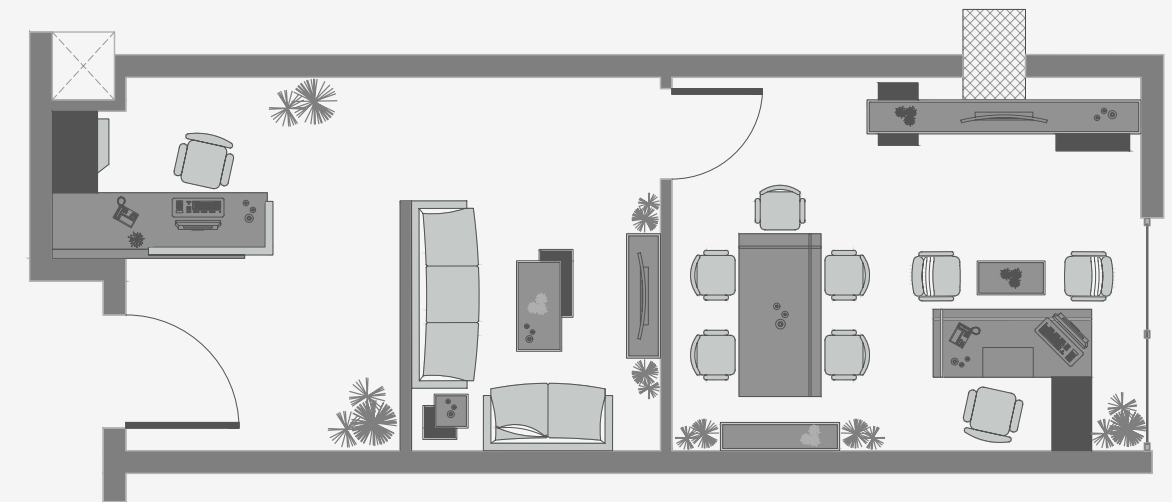
An open plan accommodating up to 20 comfortably seated workplaces.



LAYOUT OPTION 2

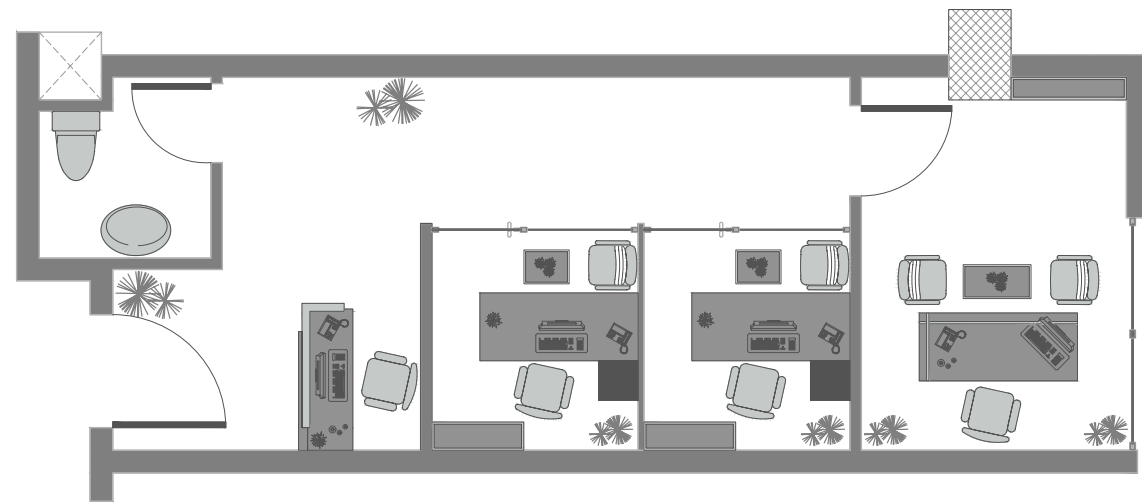
A functional plan for different types of companies.

A spacious manager office, an 8pax workstation, reception and bathroom.



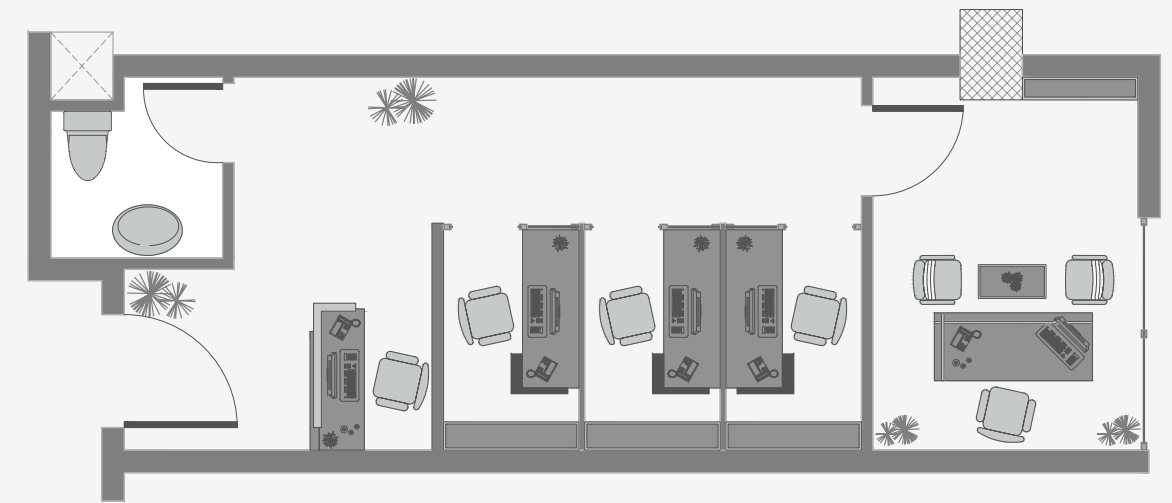
LAYOUT OPTION 3

A luxurious plan offering an executive office with meeting area, a lounge seating, a reception with the possibility for a bathroom.



LAYOUT OPTION 4

This space is brilliant for companies that seek more privacy in their working environment as it offers 3 closed manager offices, a reception and a bathroom.



LAYOUT OPTION 5

Here is one more plan combining both privacy and efficiency. The space accommodates a manager office, 3 private workspaces, a reception and a bathroom.



OFFICES INTERIOR

Adequate daylighting in workspaces is an essential element of this design strategy leading to the improvement of end users' comfort. That's why at SOLAS the social and environmental context of sustainable design of interiors is considered and encompassed along with their economical aspect, in line with the required functional and technical solutions.





FINISHING SPECIFICATIONS OFFICES

- Central AC
- Moist Resistant Gibson Board Ceiling
- Scib Paintings
- HDF Flooring
- BR Sewage Network
- Oak Wood Doors
- Cable Network 'as per drawings'

SOLAS
Enlightened Workplaces



**ACDA 2020 FIRST AWARD
OFFICE BUILDING CONCEPT**

VOW

DEVELOPMENTS

At VOW Developments, we made a promise to create places that will touch all of your senses. We made a promise to design spaces that inspire you to outshine; spaces where your heart, mind, and soul can find peace and tranquility



BUSINESS CONSULTANT



ARCHITECTURE FIRM



DEV. & MARKETING
CONSULTANT



INTERIOR DESIGN

MORE THAN A PROMISE

The human spirit is constantly seeking a comfort zone. Once found, there are no limits to what the mind can imagine and the heart can aspire. Once found, there are no barriers to how well one can live, work, innovate, and succeed.

At VOW Developments, we made a promise to create places that will touch all of your senses. We made a promise to design spaces that inspire you to outshine; spaces where your heart, mind, and soul can find peace and tranquility.

But it's more than just a promise... It's a commitment to providing a new way of life, and it's only a few steps away...

OUR VOWS

At VOW Developments, we practice good corporate governance and are committed to delivering high-quality, high-value products and services without compromising on our social or environmental responsibilities.

Our philosophy focuses on creating impactful experiences that make a real difference in our customers' lives and empower them to live and work better. We follow a customer-centric approach and strive to always exceed expectations.

Thanks to our established expertise in the real estate market and our ability to embrace innovation and technology, we're able to offer unique experiences and spaces and that are future-ready.



DEVELOPING SPACES FOR THE FUTURE

The future holds a myriad of opportunities for those who are ready for it, and at VOW Developments we're ready for the future.

Driven by our visionary founders, we've embraced an agile approach and focused on sustainable development, corporate ethics, and service excellence. We're on a mission to redefine the concept of commercial and administrative viability and to set new standards for environments that enrich experiences and promote wellbeing.

The logo for VOW DEVELOPMENTS is centered on a background of overlapping, semi-transparent circles in various shades of brown and tan. The word "VOW" is written in a large, white, serif font with a classic, slightly condensed style. Below it, the word "DEVELOPMENTS" is written in a smaller, white, all-caps, sans-serif font.

VOW
DEVELOPMENTS