



MIDTOWN

NEW CAPITAL

LAYOUT NEW CAPITAL



MIDTOWN
NEW CAPITAL



The Capital Cairo
العاصمة القاهرة

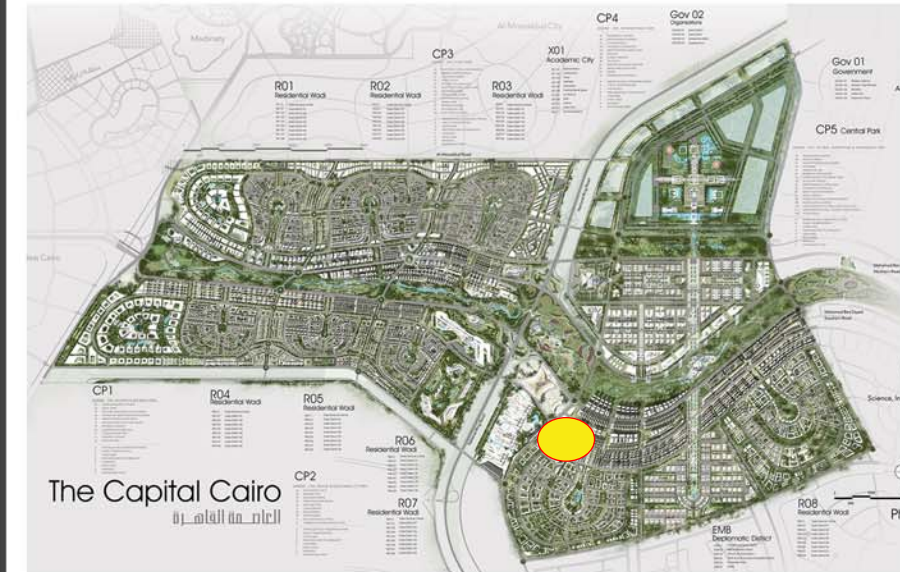
Phase 1 Master Plan
168,000,000 m2

- Administration & Commercial MU
- Residential Oasis 1 R01
- Residential Oasis 2 R02
- Residential Oasis 3 R03
- Residential Oasis 4 R04
- Residential Oasis 5 R05
- Residential Oasis 6 R06
- Residential Oasis 7 R07
- Residential Oasis 8 R08
- Government 01 GOV01
- Government 02 GOV02
- Presidential Park PP1
- Academic City X01
- Smart City X02
- Central Hub X03
- Medical City A X04
- Medical City B X05
- Hotel X06
- Conference Center X07
- Presidential Palace X08
- EXPO X09
- Information Center X10
- Hotel X11
- Religious X12
- Opera House X13
- History & Gateway Park CP1
- Health & Sustainability Park CP2
- Civic Park CP3
- International Park CP4
- Science, Innovation & Technology Park CP5
- Investment Zone 1 P1
- Investment Zone 2 P2
- Investment Zone 3 P3
- Constitutional Court CO
- Diplomatic District EMB

LOCATION



MIDTOWN
NEW CAPITAL



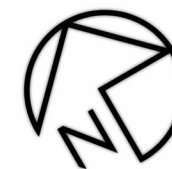
THE NEW CAPITAL LOCATION

This location was chosen to be an extension of the current capital, it extends Cairo's east between the way of "Cairo-Suez," and "Cairo - al Ain sukhna", east of the regional ring road, 45 km from the center of Cairo, 80 kilometers near the city of Suez, also near the red sea, which gives it a logistical advantage and strategic benefits, as it is expected to accommodate about seven million and adjusted capital area as well. However the new area of the state of Singapore which is approximately four times the Washington, DC, is an area of 170,000 acres. Capital Cairo will set a new design standard for the capital of the capital a sustainable and manufactured strategic, new urban center, that stimulates build a national spirit, enhance compatibility, and provide long-term growth of the country therefore this would ensure the survival of the capital for upcoming generations, to be a new capital for all Egyptians.

LAYOUT



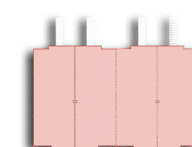
MIDTOWN
NEW CAPITAL



TOWN HOUSE

M BUA 300m² – LAND 200 m²

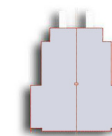
C BUA 300m² – LAND 300 m²



TOWN HOUSE

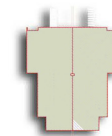
M BUA 300m² – LAND 200 m²

C BUA 300m² – LAND 300 m²



SMALL TWIN HOUSE

BUA 350m² – LAND 300 m²



LAGRE TWIN HOUSE

BUA 400m² – LAND 330 m²



STAND ALONE

BUA 500m² – LAND 450 m²

TOWN HOUSE PLANS



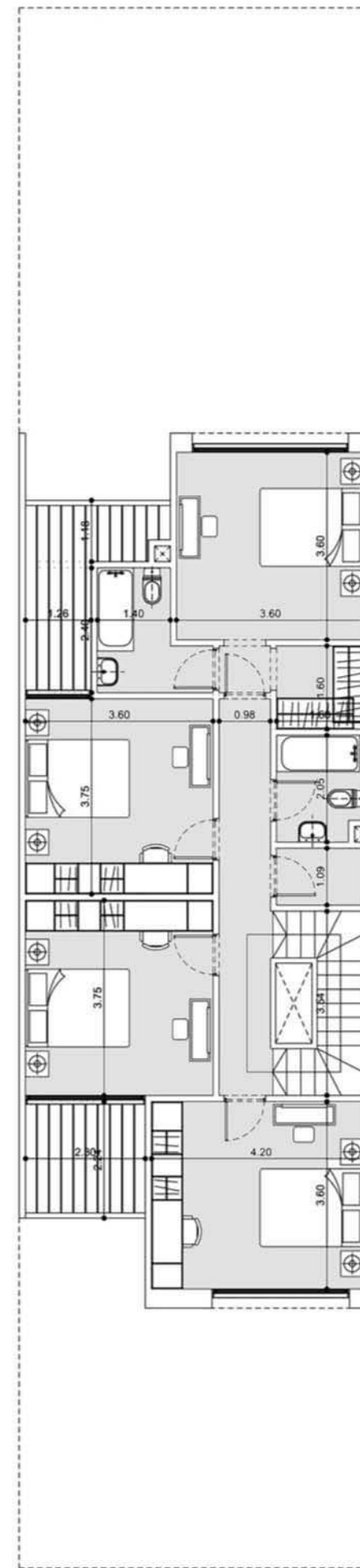
MIDTOWN
NEW CAPITAL

TOWN HOUSE

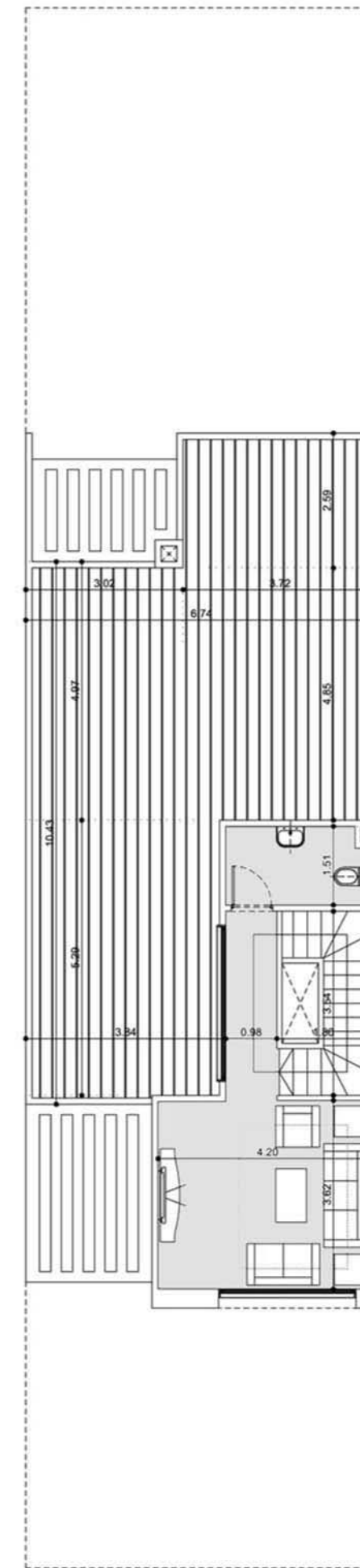
BUA 300m² – LAND 200 m²



Ground Floor Plan



First Floor Plan



Roof Floor Plan

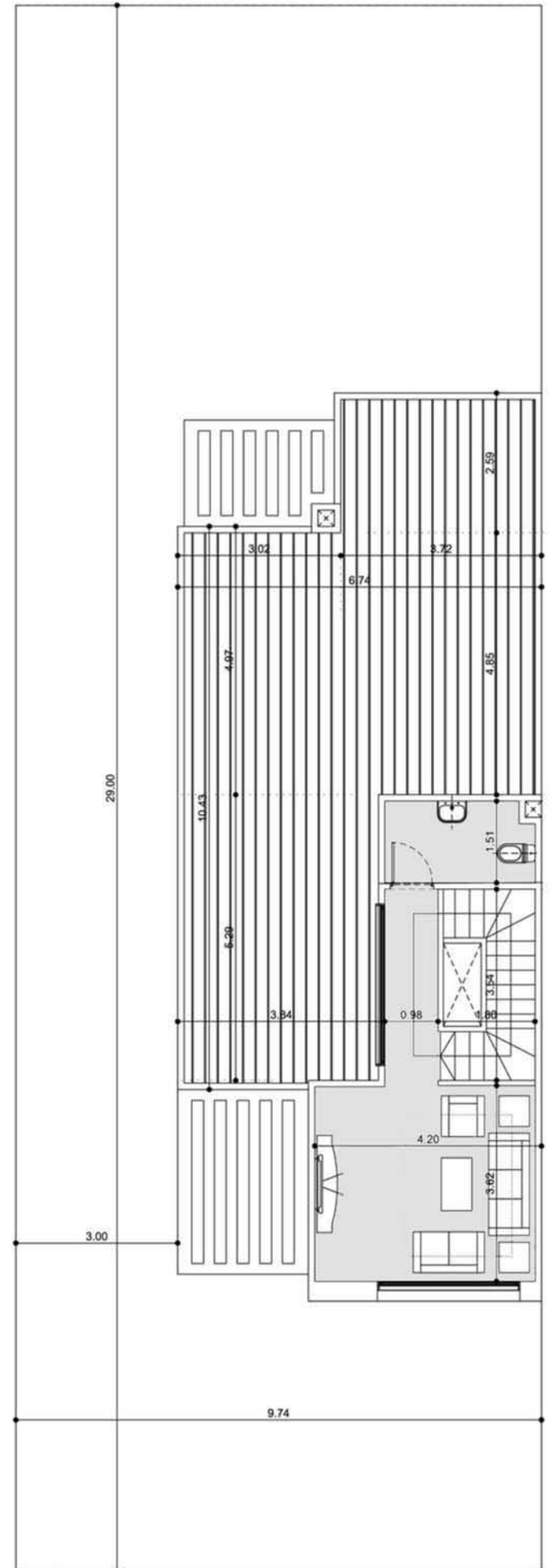
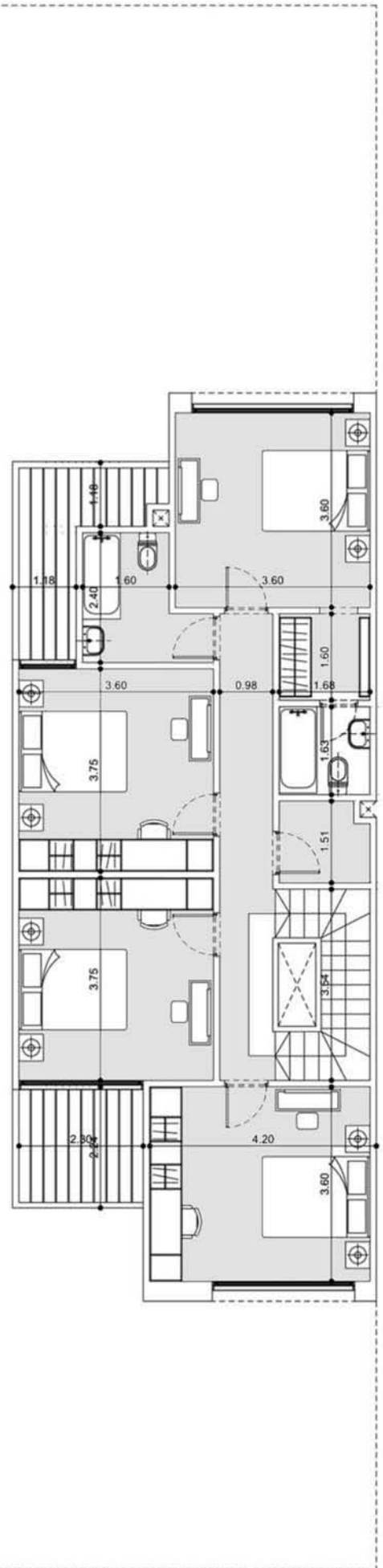
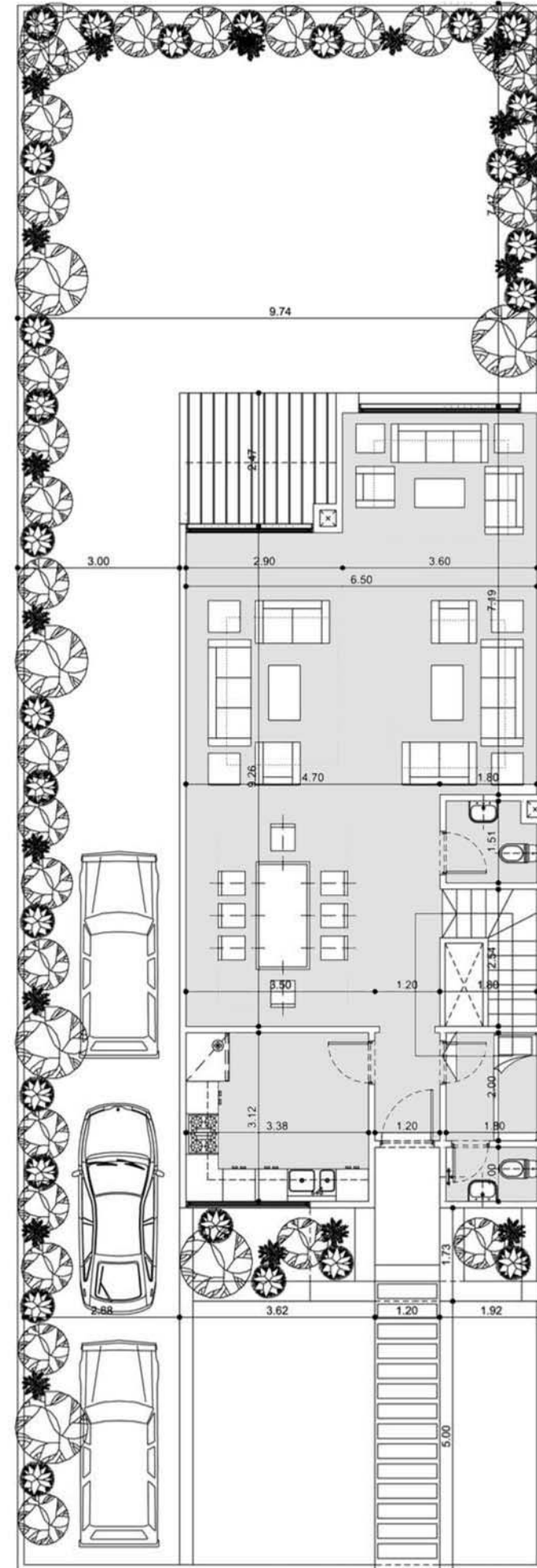
TOWN HOUSE PLANS CORNER



MIDTOWN
NEW CAPITAL

TOWN HOUSE

BUA 300m² – LAND 300 m²



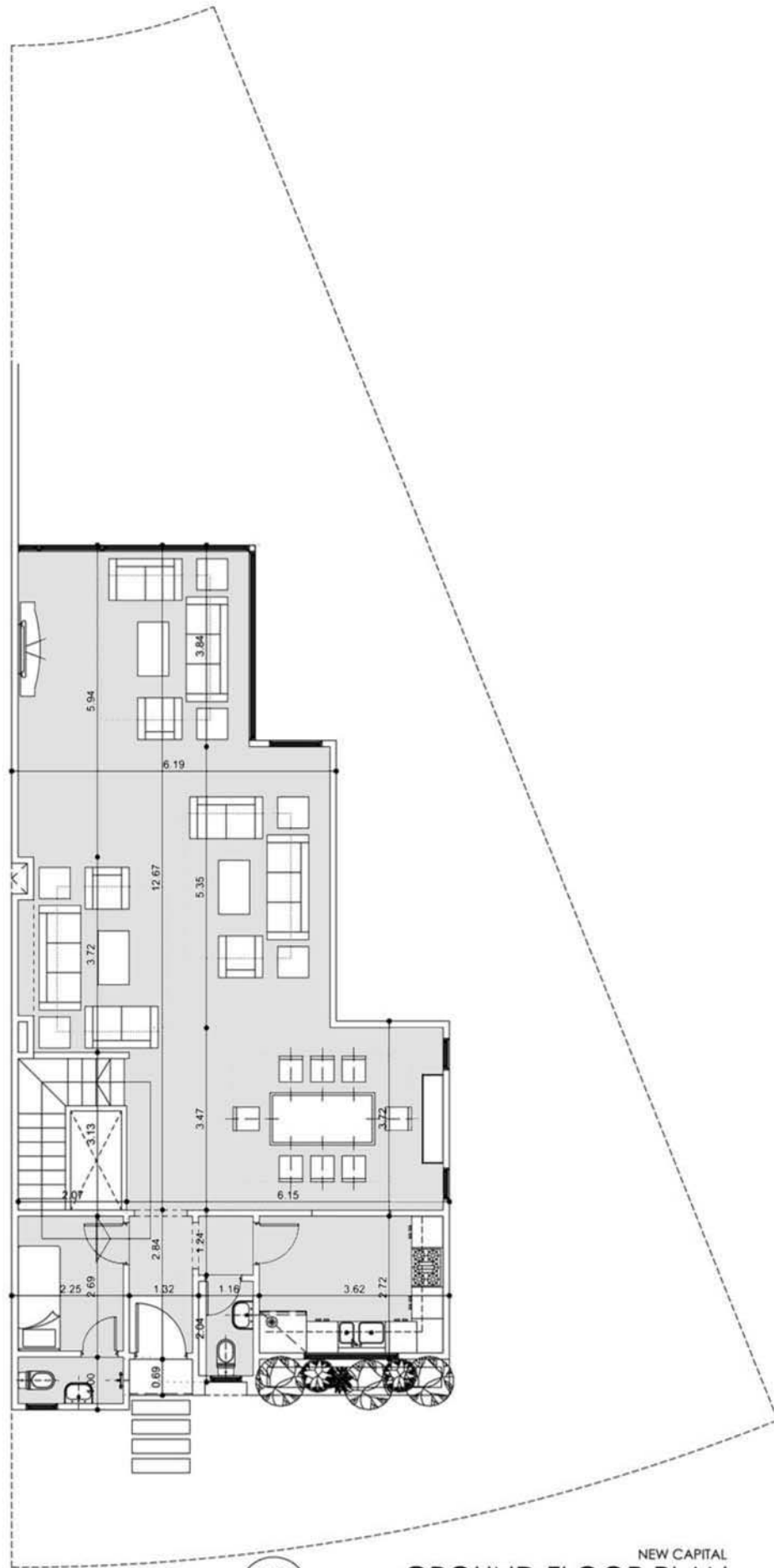
TWIN HOUSE PLANS-SMALL



MIDTOWN
NEW CAPITAL

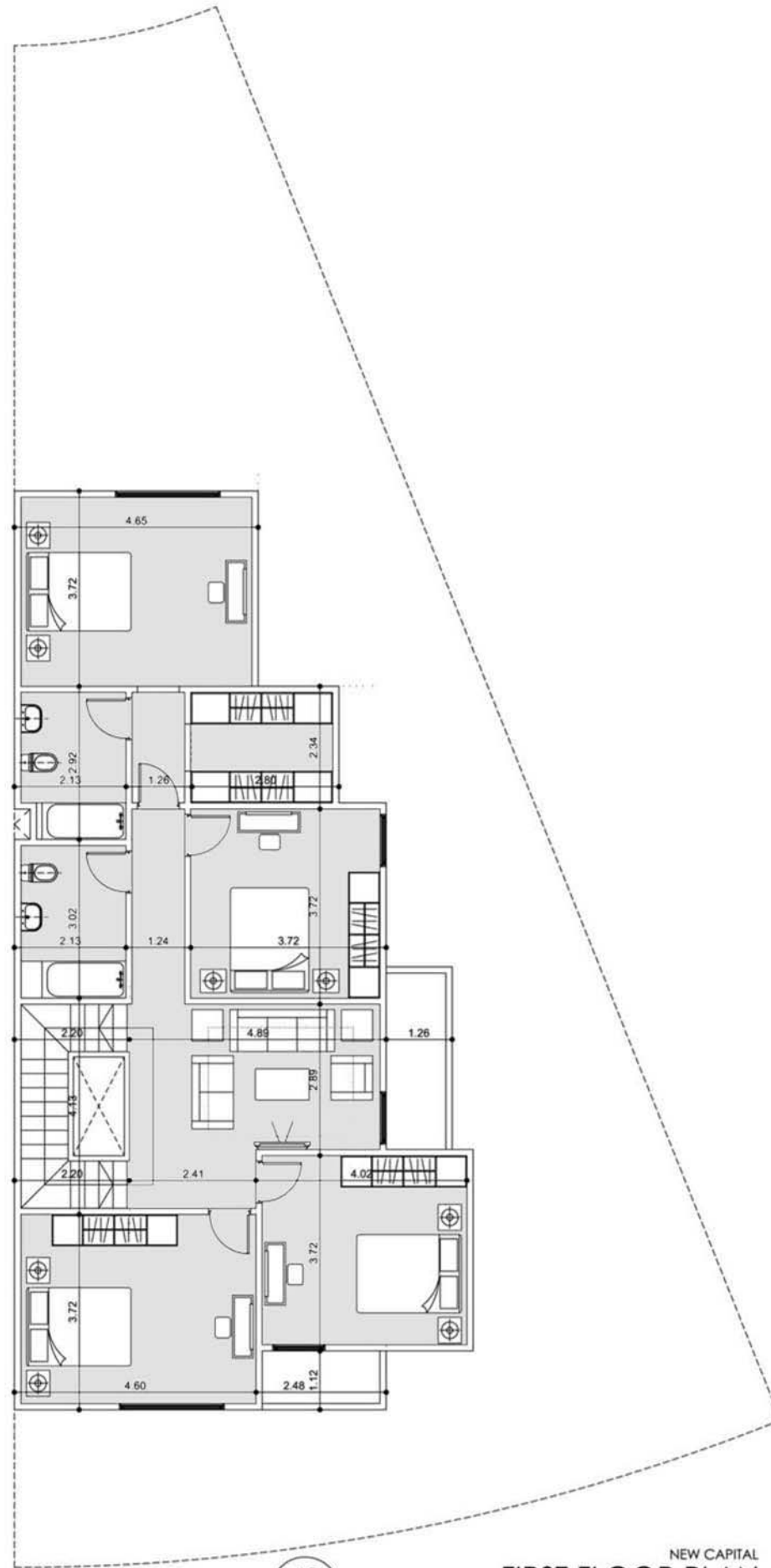
SMALL TWIN HOUSE

BUA 350m² – LAND 300 m²



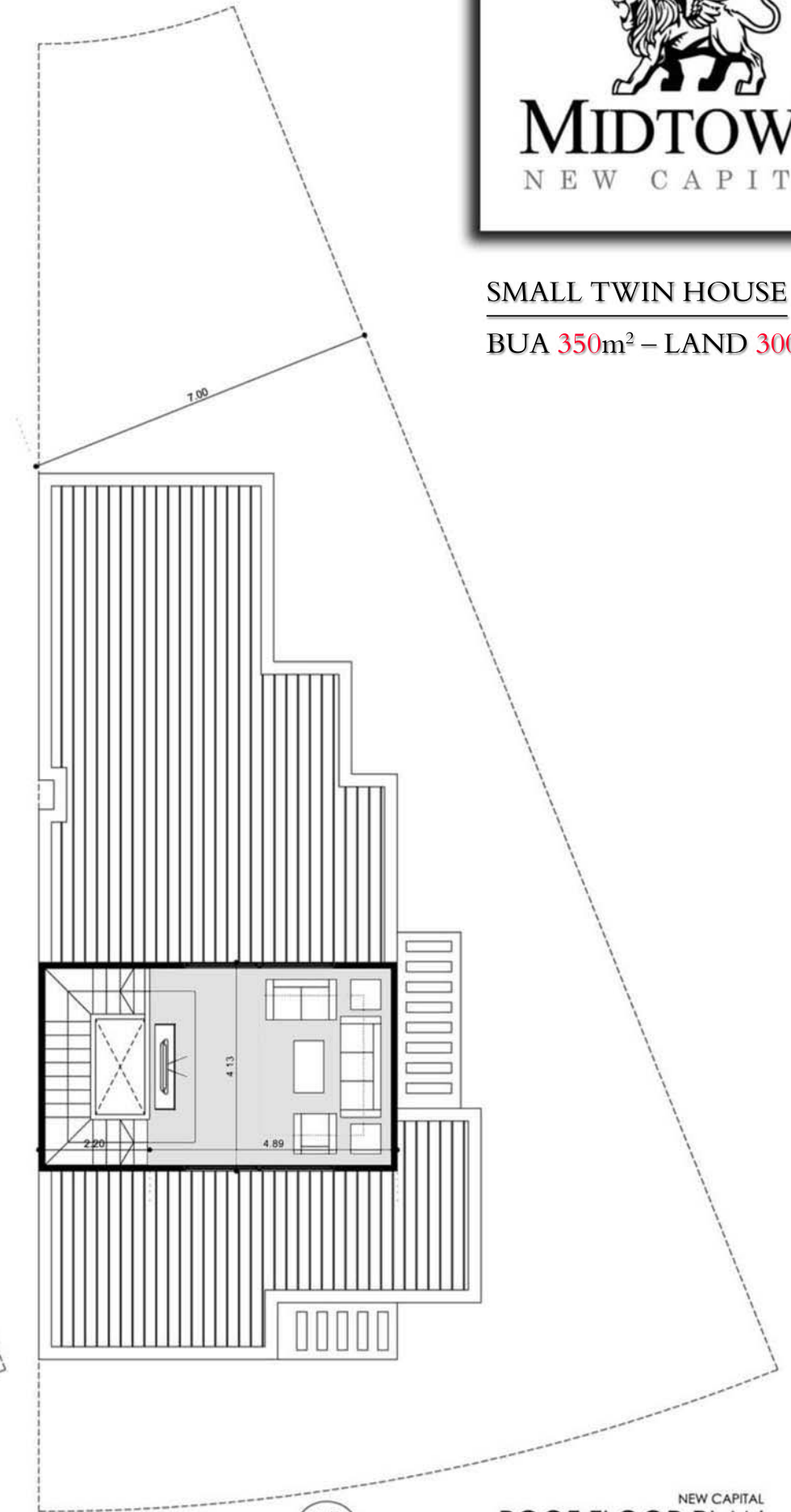
AR
01-101

NEW CAPITAL
GROUND FLOOR PLAN
TWIN VILLA - SMALL



AR
01-101

NEW CAPITAL
FIRST FLOOR PLAN
TWIN VILLA - SMALL



AR
01-101

NEW CAPITAL
ROOF FLOOR PLAN
TWIN VILLA - SMALL

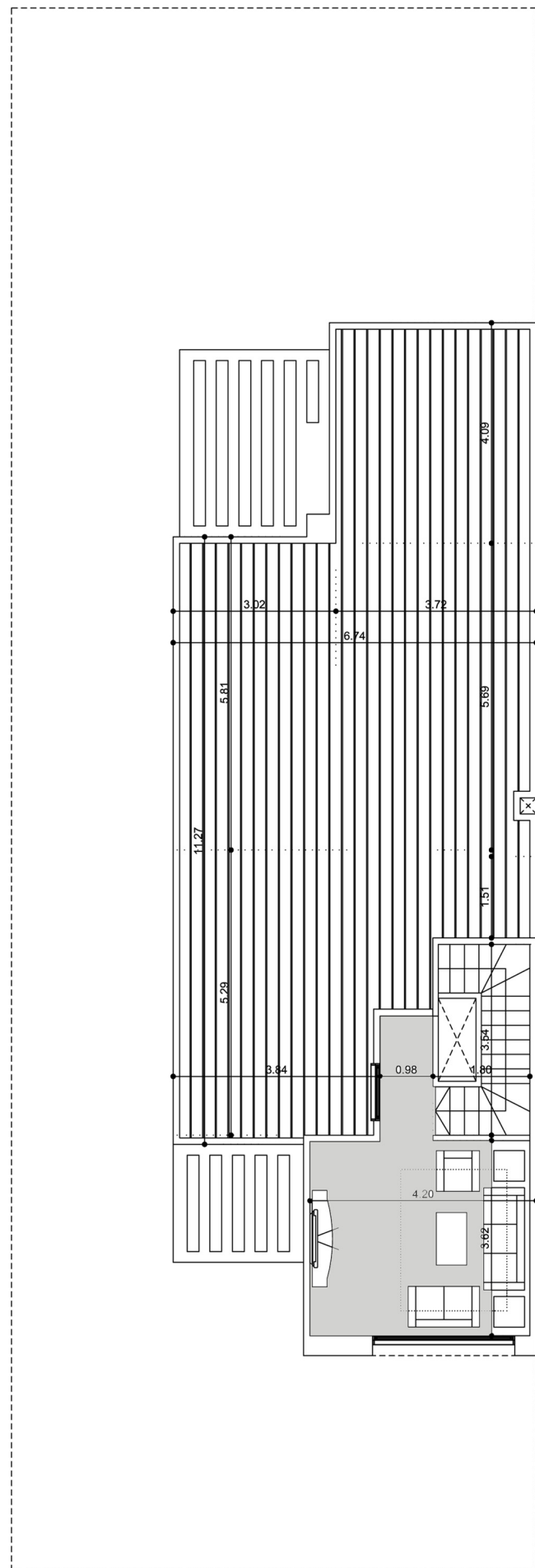
TWIN HOUSE PLANS-SMALL



MIDTOWN
NEW CAPITAL

SMALL TWIN HOUSE

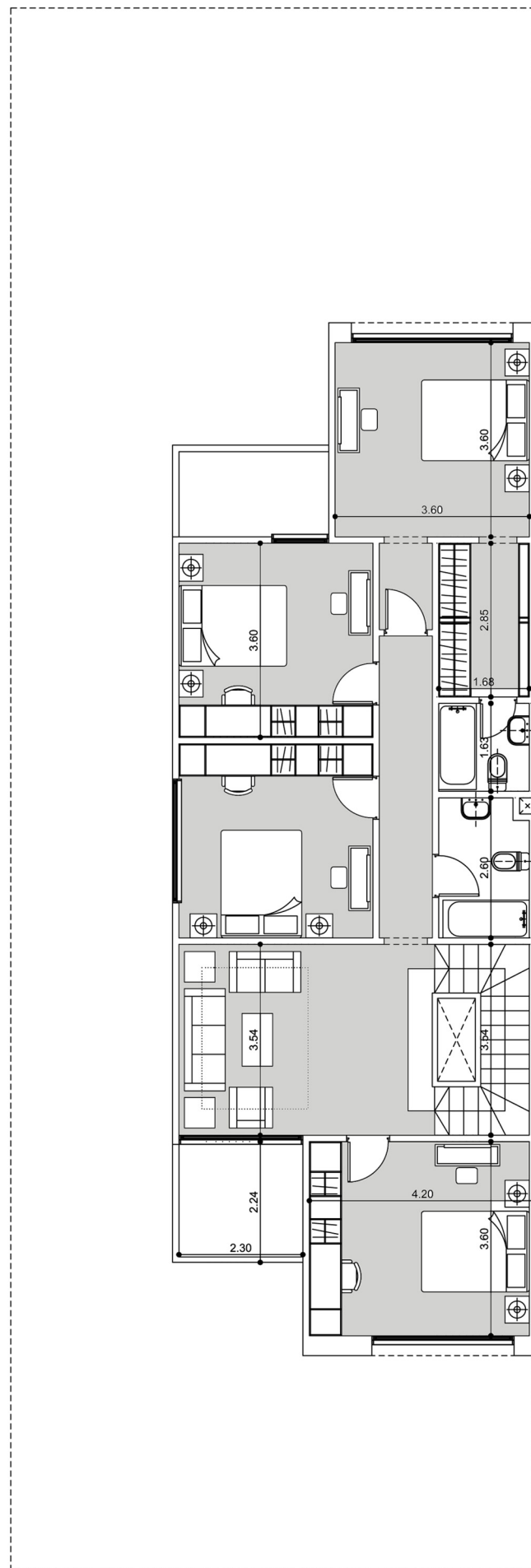
BUA 350m² – LAND 300 m²



NEW CAPITAL
ROOF FLOOR PLAN
TWIN VILLA MINI

AR

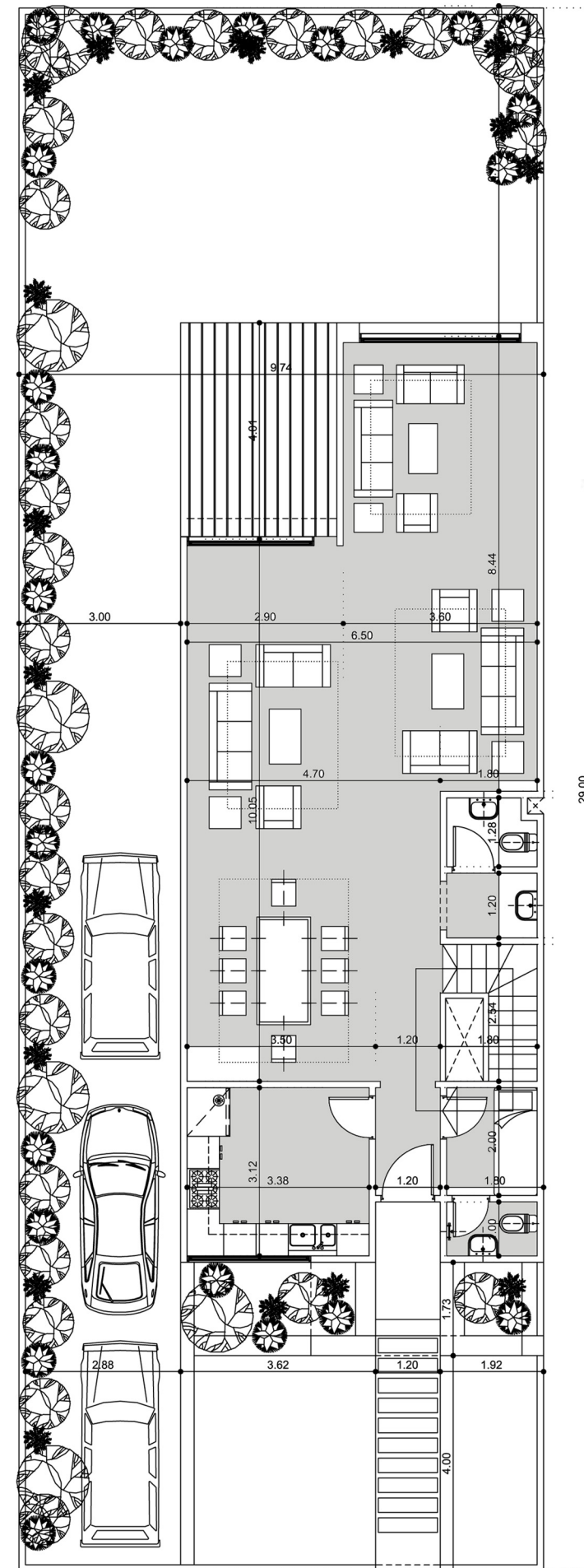
01-101



NEW CAPITAL
FIRST FLOOR PLAN
TWIN VILLA MINI

AR

01-101



NEW CAPITAL
GROUND FLOOR PLAN
TWIN VILLA MINI

AR

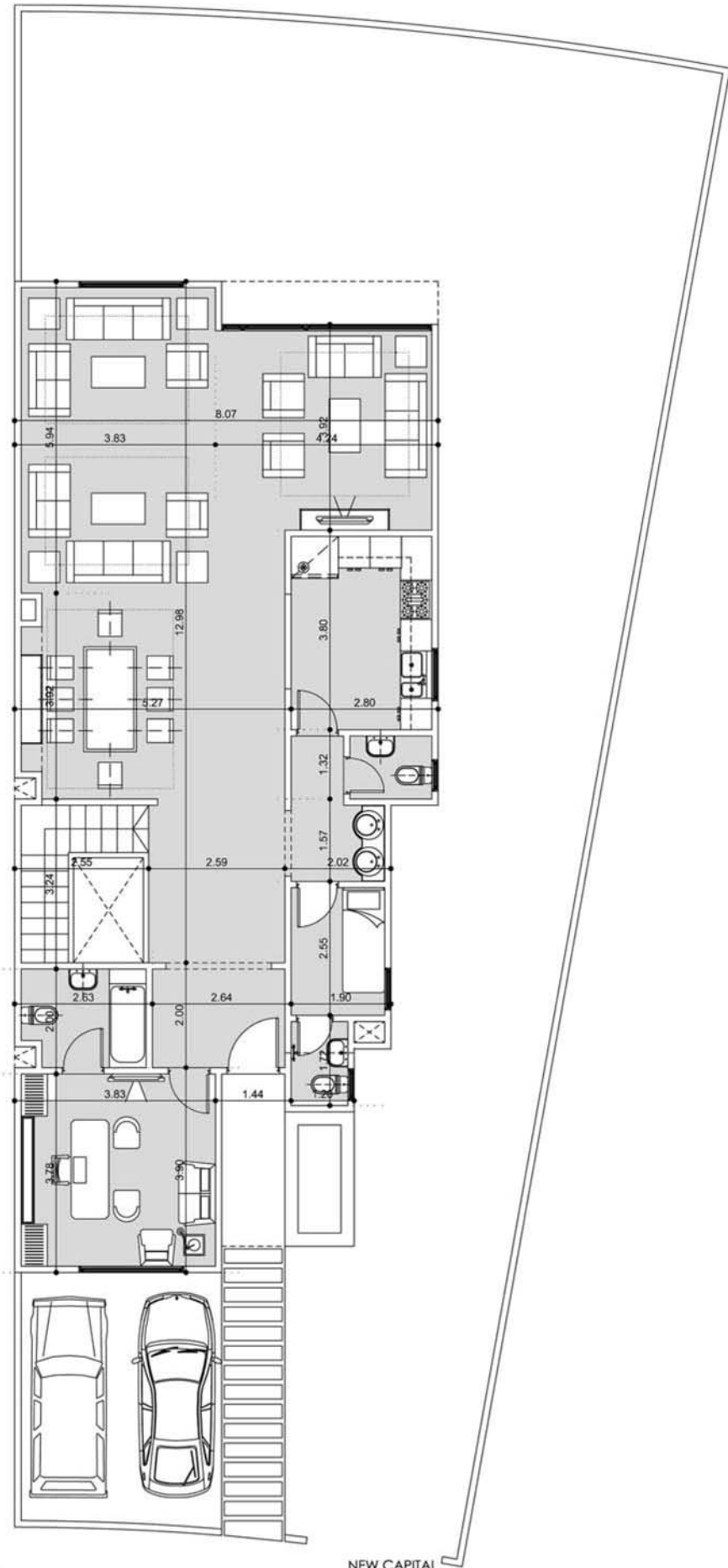
01-101

TWIN HOUSE PLANS-LARGE



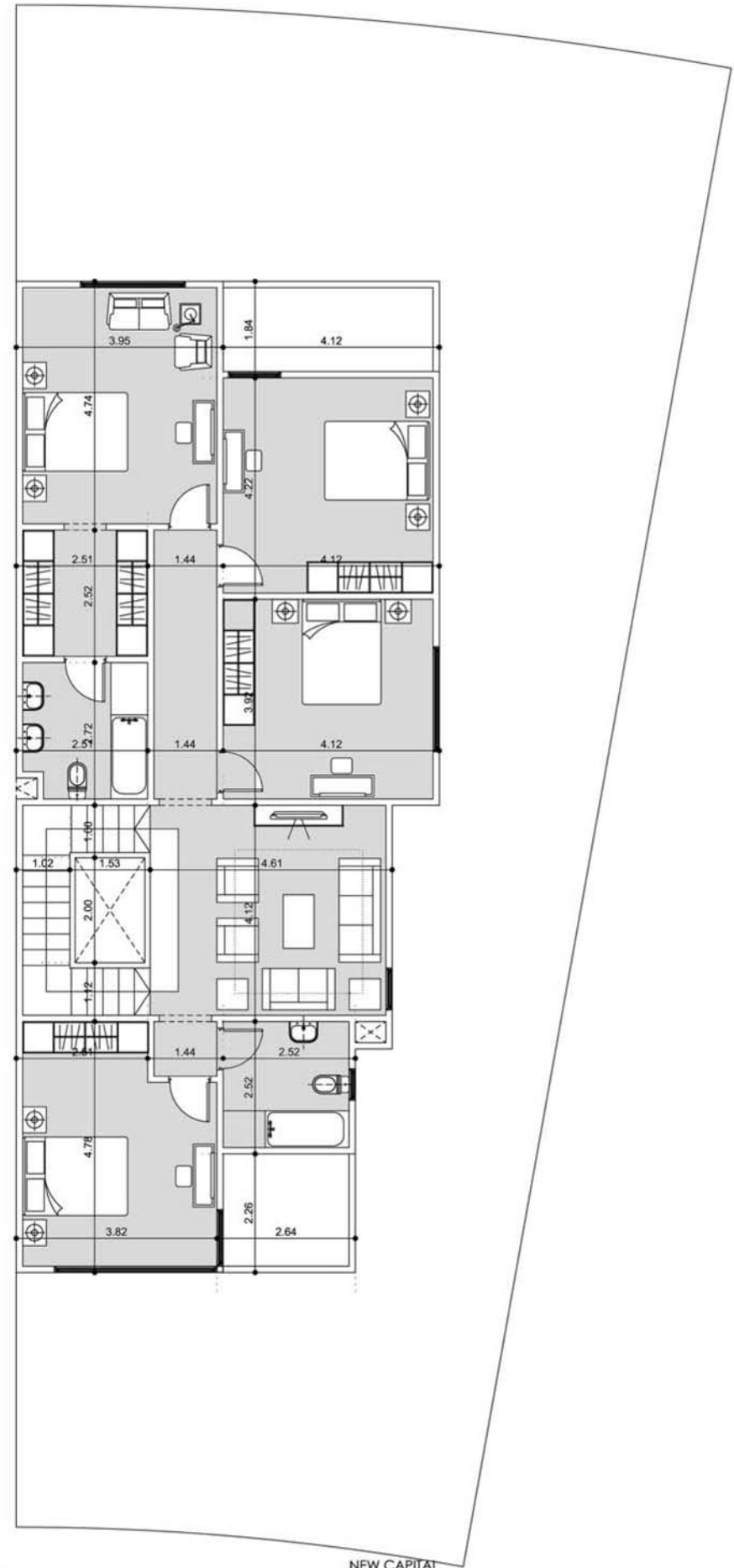
MIDTOWN
NEW CAPITAL

LAGRE TWIN HOUSE
BUA 400m² – LAND 330 m²



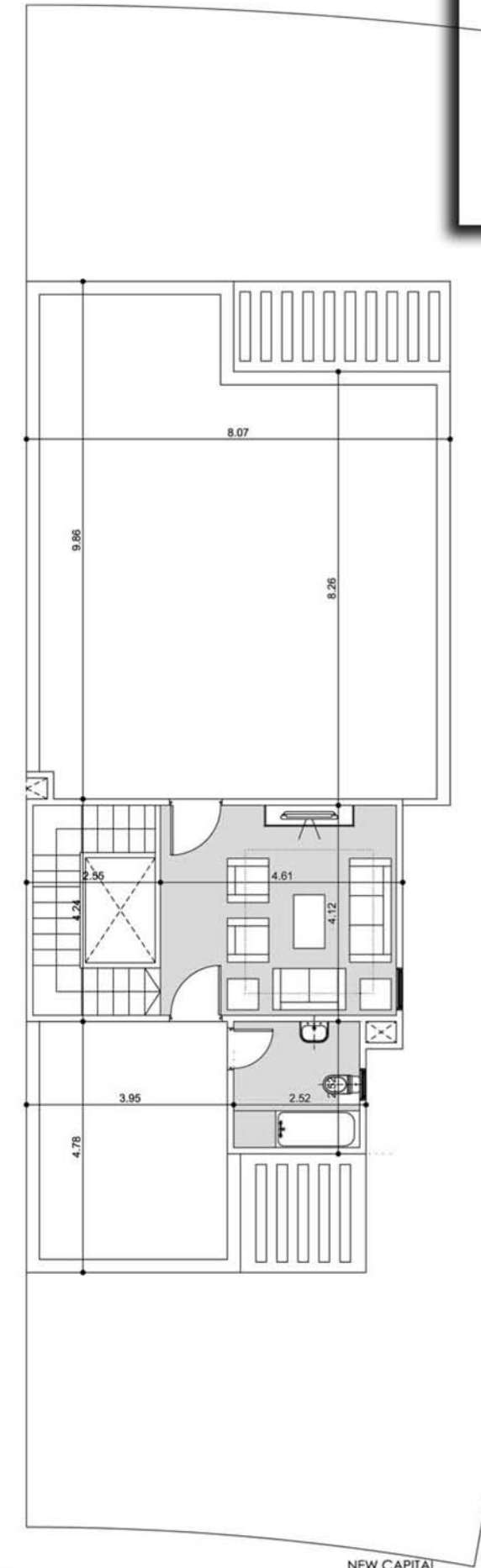
AR
01-101

NEW CAPITAL
GROUND FLOOR PLAN
TWIN VILLA - LARGE



AR
01-101

NEW CAPITAL
FIRST FLOOR PLAN
TWIN VILLA - LARGE



AR
01-101

NEW CAPITAL
ROOF FLOOR PLAN
TWIN VILLA - LARGE